

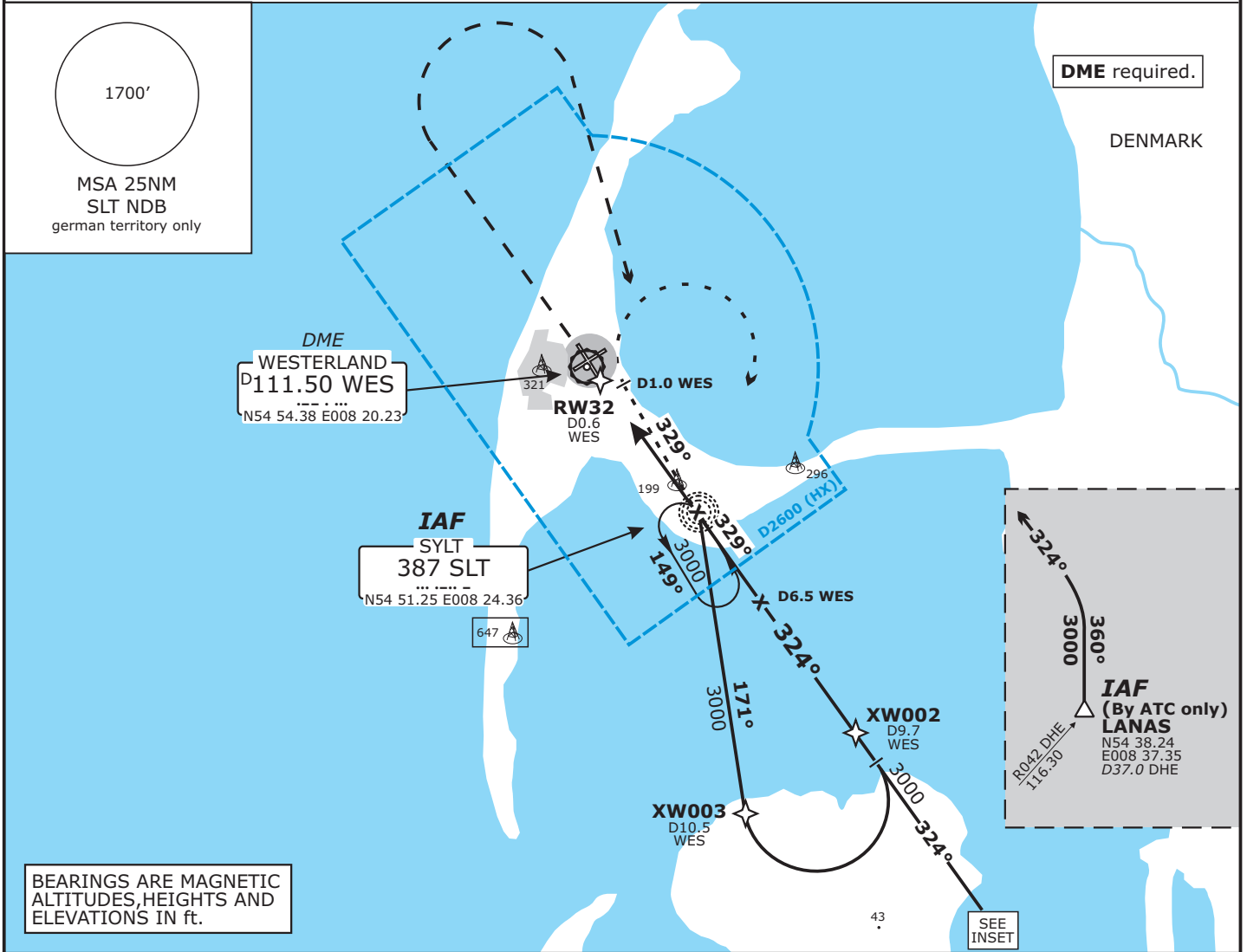
**EDXW - WESTERLAND/SYLT**

Valid for flight simulation use only - do not use for real life navigation

BREMEN Radar 123.92		SYLT Tower 119.75		
	Final Apch Crs <b>324°</b>	SLT NDB <b>1170'</b> (1129')	OCA(H) Refer to Minimums	Apt Elev 51'

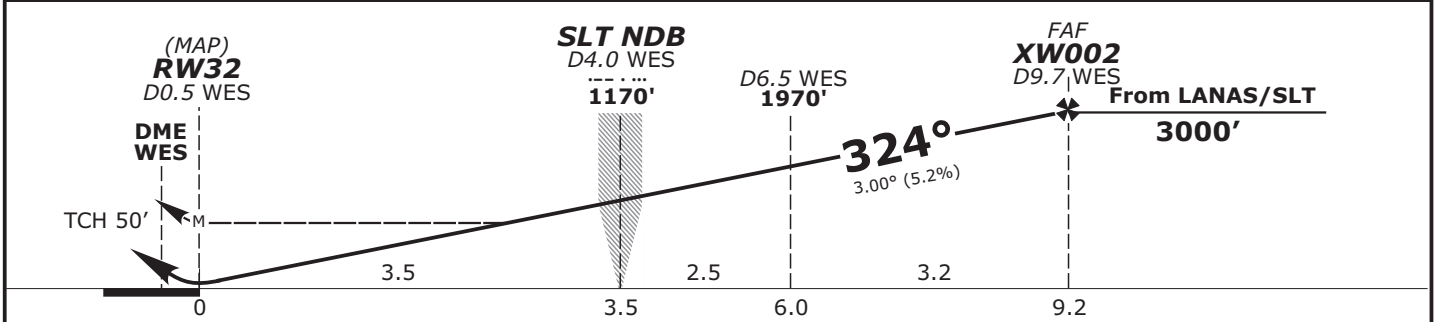
**MISSED APCH:** Climb straight ahead to 1000', turn RIGHT to SLT NDB climbing to 3000'.

Alt Set: hPa (IN on req)      Trans level: By ATC      Trans alt: 5000'



BEARINGS ARE MAGNETIC  
ALTITUDES, HEIGHTS AND  
ELEVATIONS IN FT.

NDB-DME	DME WES	2.0	3.0	4.0	5.0	6.0	7.0	8.0	9.0
	ALTITUDE	530'	850'	1170'	1490'	1810'	2130'	2440'	2760'



Flight Simulator-OPS		Gnd speed-Kts					
NDB-DME (GPS) OCA(H)	CIRCLING* OCA(H)	80	100	120	140	160	180
				Descent Gradient 5.2% or 3.00°			
		430	530	640	740	850	960
		MAP at RW32					
A		* RWY 14 NORTHEAST OF AERODROME ONLY.					
B							
C	470 (420)						
D							

CHANGES: Procedure, Obstacles revised, OCA(H), Runway Designation