

EDXW WESTERLAND/SYLT

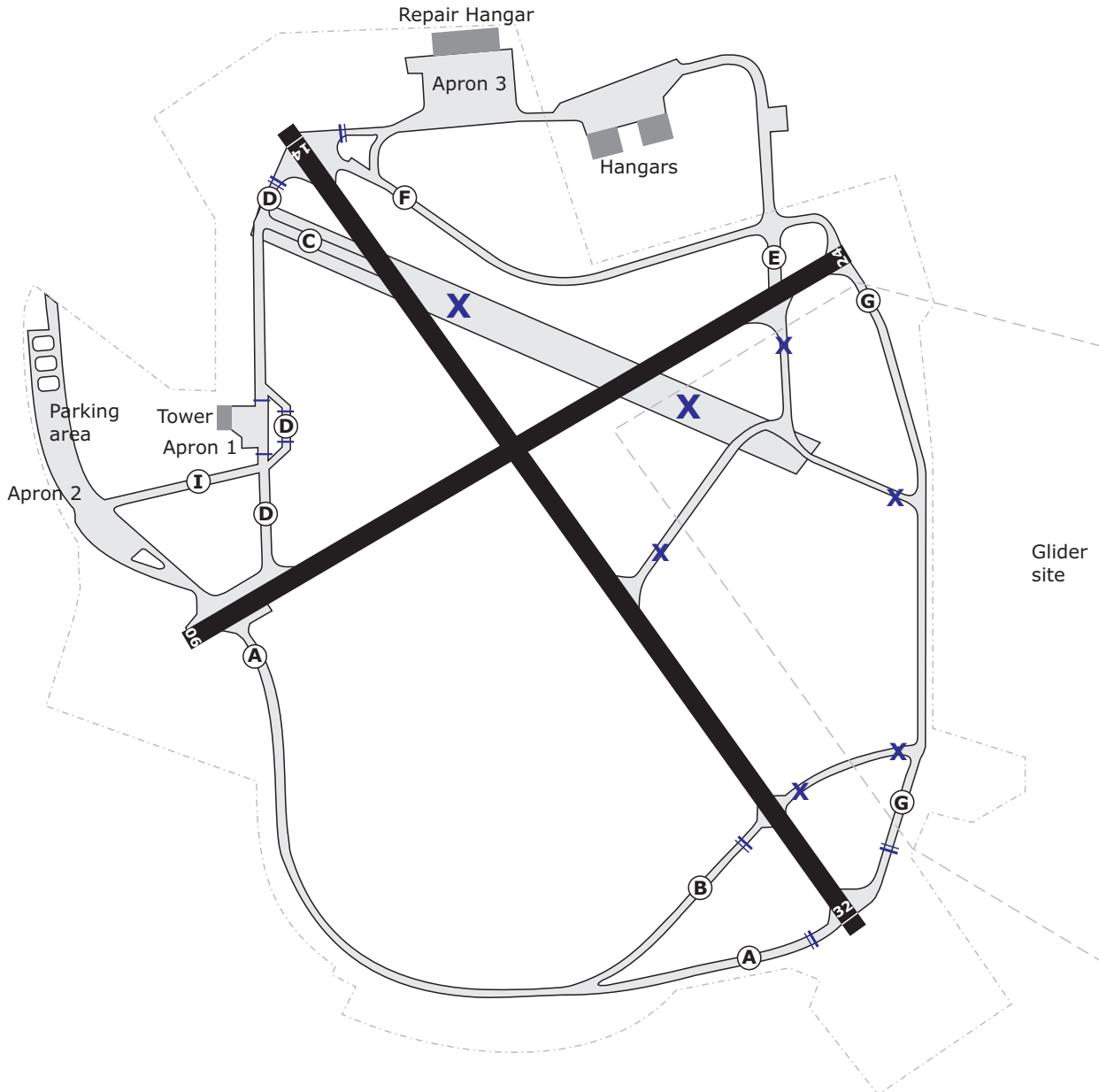
SYLT Tower
119.75

Bremen RADAR
123.92

Apt Elev
51'

Alt Set: hPa (IN on request)
Trans level: by ATC
Trans alt: 5000'

Valid for flight simulation use only - do not use for real life navigation



INTERSECTION TAKE-OFF

RWY	TWY	TORA	TODA	ASDA
14	C	1748	1808	1780
32	B	1826	1886	1858

WESTERLAND, GERMANY
ILS or LOC RWY 32

EDXW - WESTERLAND/SYLT

Valid for flight simulation use only - do not use for real life navigation

BREMEN Radar 123.92		SYLT Tower 119.75		
LOC IWES 111.50	Final Apch Crs 324°	GS OM 1170' (1129')	ILS OCA(H) Refer to Minimums	Apt Elev 51'

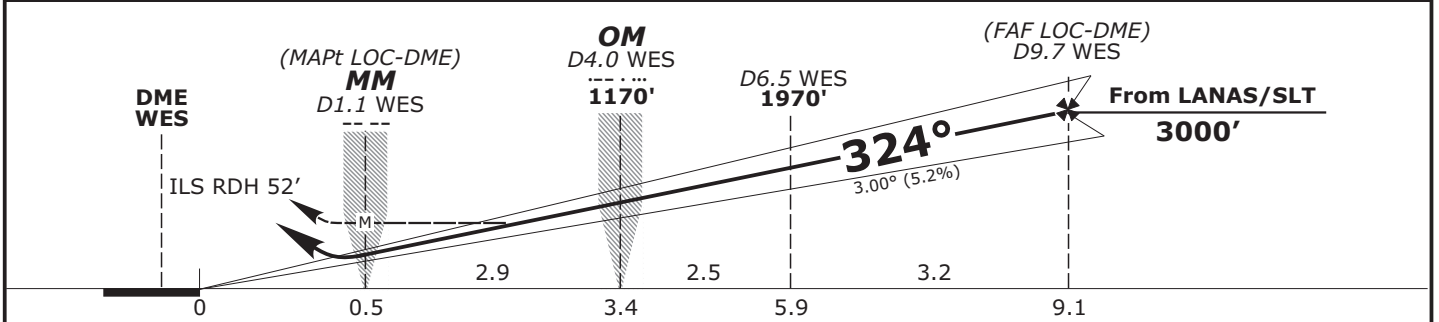
MISSED APCH: Climb straight ahead to 1000', turn RIGHT to SLT NDB climbing to 3000'.

Alt Set: hPa (IN on req) Trans level: By ATC Trans alt: 5000'



BEARINGS ARE MAGNETIC
ALTITUDES, HEIGHTS AND
ELEVATIONS IN ft.

LOC (GS OUT)	DME WES	2.0	3.0	4.0	5.0	6.0	7.0	8.0	9.0
	ALTITUDE	530'	850'	1170'	1490'	1810'	2130'	2440'	2760'



Flight Simulator-OPS			Gnd speed-Kts					
ILS CAT I OCA(H)	LOC-DME OCA(H)	CIRCLING* OCA(H)	80	100	120	140	160	180
A	470 (420)	620	420	530	640	740	850	960
B		620	Descent Gradient 5.2% or 3.00°					
C		720	MAP at MM, D1.1 WES.					
D		740	* RWY 14 NORTHEAST OF AERODROME ONLY.					
D								

CHANGES: Procedure, Obstacles revised, OCA(H), Runway Designation

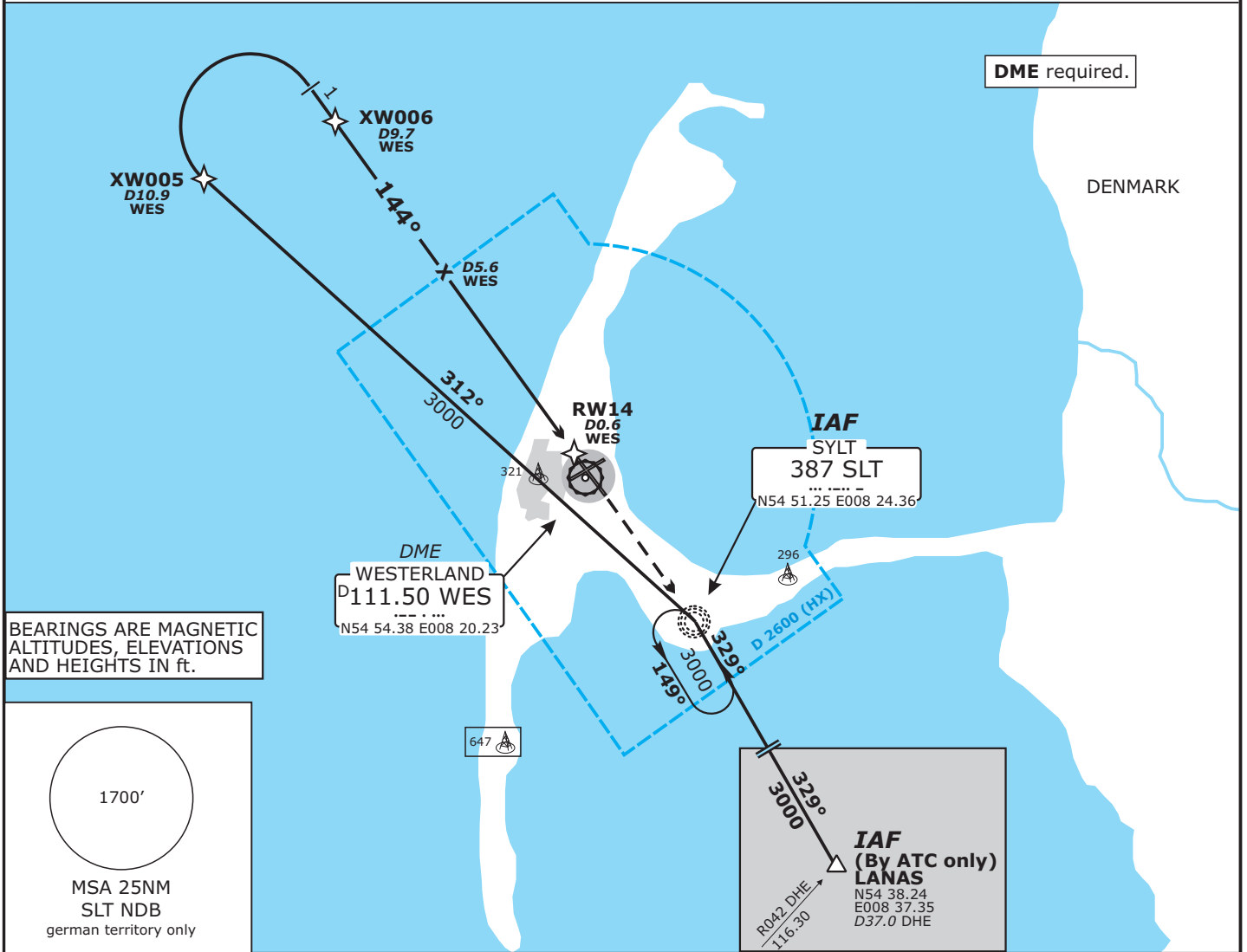
EDXW - WESTERLAND/SYLT

Valid for flight simulation use only - do not use for real life navigation

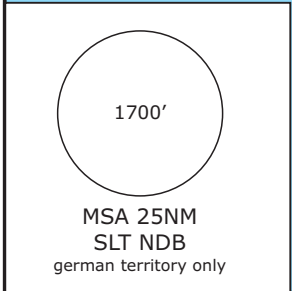
BREMEN Radar 123.92		SYLT Tower 119.75	
Final Apch Crs 144°		NDB/DME OCA(H) Refer to Minimums	Apt Elev 51'

MISSED APCH: Climb straight ahead to SLT NDB climbing to 3000'.

Alt Set: hPa (IN on req) Trans level: By ATC Trans alt: 5000'



BEARINGS ARE MAGNETIC
ALTITUDES, ELEVATIONS
AND HEIGHTS IN ft.



NDB-DME	DME WES	9.0	8.0	7.0	6.0	5.0	4.0	3.0
	ALTITUDE	2760'	2440'	2120'	1810'	1490'	1170'	850'

Flight Simulator-OPS		Gnd speed-Kts					
NDB/DME OCA(H)	A B C D D	80	100	120	140	160	180
		Descent Gradient 5.2% or 3.00°					
		420	530	640	740	850	960
		MAP at RW14, D0.6 WES.					

CHANGES: Procedure, Obstacles revised, OCA(H), RWY Designation.

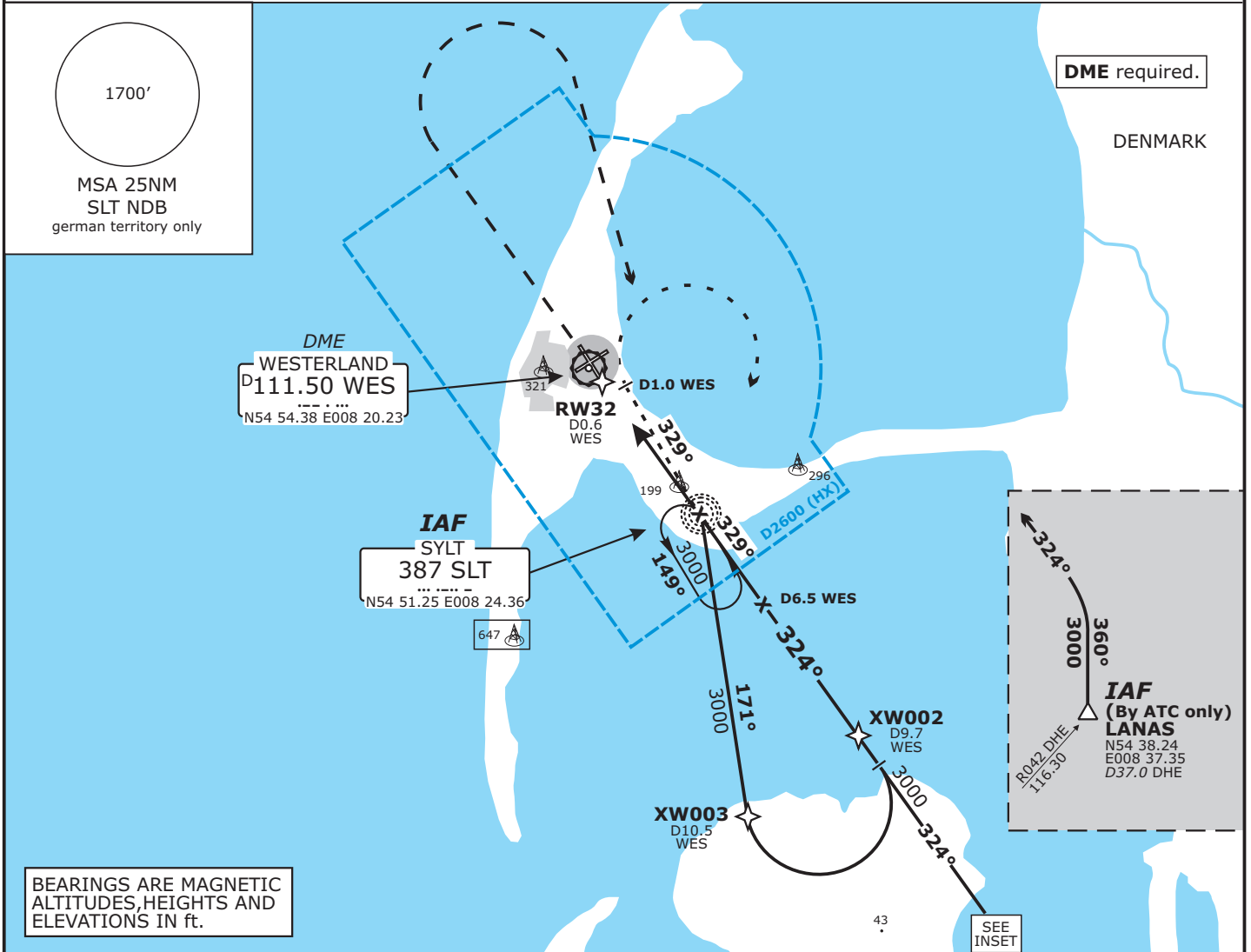
EDXW - WESTERLAND/SYLT

Valid for flight simulation use only - do not use for real life navigation

BREMEN Radar 123.92		SYLT Tower 119.75		
	Final Apch Crs 324°	SLT NDB 1170' (1129')	OCA(H) Refer to Minimums	Apt Elev 51'

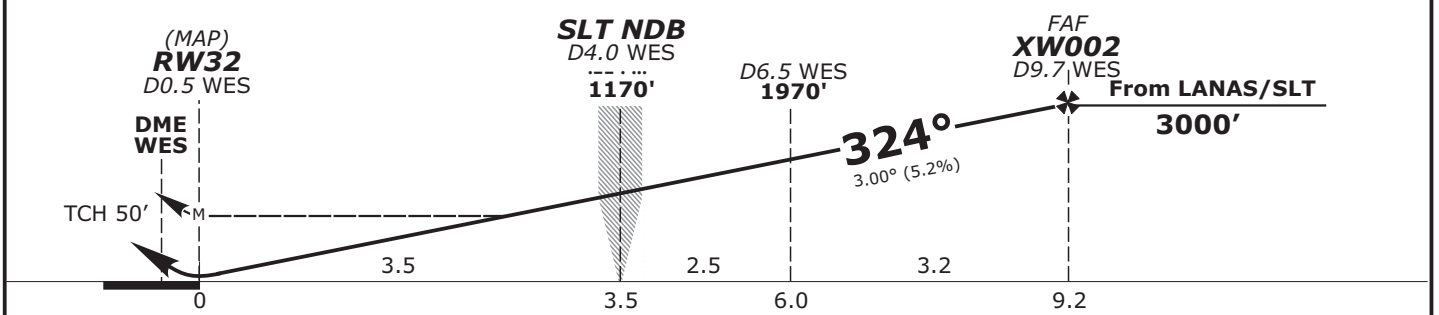
MISSED APCH: Climb straight ahead to 1000', turn RIGHT to SLT NDB climbing to 3000'.

Alt Set: hPa (IN on req) Trans level: By ATC Trans alt: 5000'



BEARINGS ARE MAGNETIC
ALTITUDES, HEIGHTS AND
ELEVATIONS IN FT.

NDB-DME	DME WES	2.0	3.0	4.0	5.0	6.0	7.0	8.0	9.0
	ALTITUDE	530'	850'	1170'	1490'	1810'	2130'	2440'	2760'



Flight Simulator-OPS		Gnd speed-Kts					
NDB-DME (GPS) OCA(H)	CIRCLING* OCA(H)	80	100	120	140	160	180
				Descent Gradient 5.2% or 3.00°			
		MAP at RW32					
A		* RWY 14 NORTHEAST OF AERODROME ONLY.					
B							
C	470 (420)						
D							

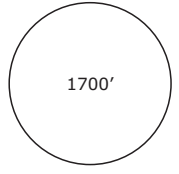
CHANGES: Procedure, Obstacles revised, OCA(H), Runway Designation

SYLT Tower
119.75

BREMEN Radar
123.92

Apt Elev
51'

Alt Set: hPa (IN on request)
Trans level: by ATC
Trans alt: 5000'



MSA 25NM
SLT NDB
german territory only

- ① 144° DHE 4S / LBE 5S / WSR 5S
- ② 176° DHE 3N / LBE 5N / WSR 5N

BEARINGS AND TRACKS
ARE MAGNETIC
ALTITUDES IN FEET MSL

DENMARK

DME
WESTERLAND
D111.50 WES
N54 54.38 E008 20.23

SYLT
387 SLT
N54 51.25 E008 24.36

LECK

NOT TO SCALE

SPEED RESTRICTION
MAX 250 KT below FL100 or as by ATC.
Not applicable within airspace C.

FÖHR

WYK AUF FÖHR

LBE 5N / 5S
134° <25>

AMRUM

BORDELUM

BARDU
N55 38.24 E008 37.36
D60.0 LBE

PELLWORM

VEPOL
N55 38.24 E008 37.36
D29.0 DHE

ST.PETER-ORDING

DHE 3N / 4S
235° <29> 5500

HELGOLAND
116.30 DHE
N54 11.08 E007 54.39

WSR 5N / 5S
156° <40.9> 4000

155° 4000 <60>

NORTH SEA

OSTOR
N53 49.46
E009 03.10
D22.0 LBE
D46.0 DHE

R117 DHE
191° <30> 4000
R298 LBE

WESER
112.90 WSR
N53 20.52 E008 52.31

ELBE
D115.10 LBE
N53 39.15 E009 35.42

Valid for flight simulation use only - do not use for real life navigation

EDXW WESTERLAND/SYLT

Valid for flight simulation use only - do not use for real life navigation

SYLT Tower 119.75	BREMEN Radar 123.92	Apt Elev 51'	Alt Set: hPa (IN on request) Trans level: by ATC Trans alt: 5000'
----------------------	------------------------	------------------------	---

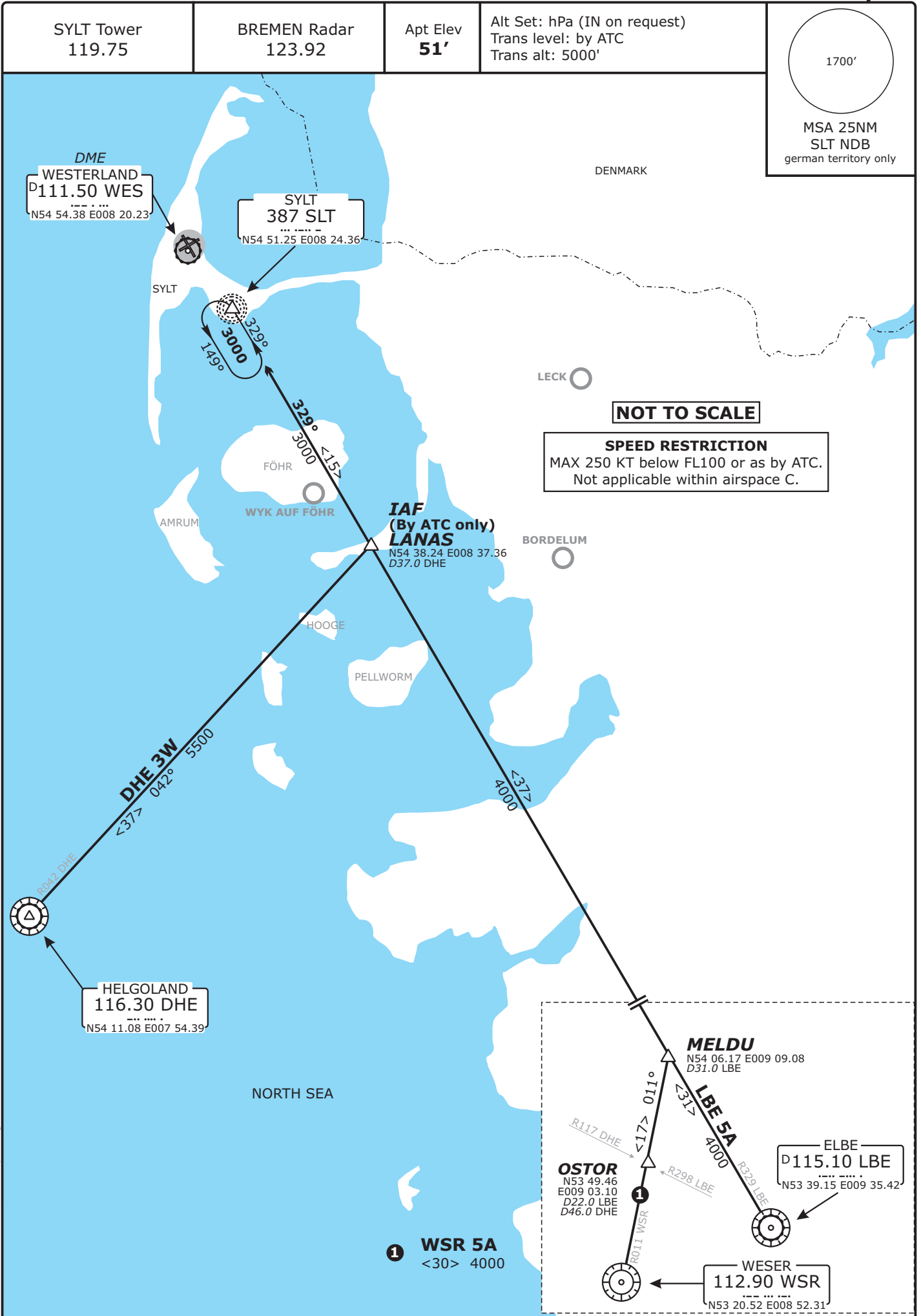
RWY 14			Initial climb clearance 4000 ft
SID	ROUTING	GPS/FMS RNAV	
DHE 4S	HELGOLAND FOUR SIERRA - On track 144° to SLT; RT, on track 164° SLT to VEPOL; RT, on R055 DHE to DHE.	[A500+] - SLT[R] - VEPOL[R] - DHE.	
LBE 5S	ELBE FIVE SIERRA - On track 144° to SLT; LT, on track 134° SLT to BARDU; RT, on R335 LBE to LBE.	[A500+] - SLT[L] - BARDU[R] - LBE.	
WSR 5S	WESER FIVE SIERRA - On track 144° SLT to SLT; RT, on track 164° to VEPOL; LT, on track 156° to OSTOR; RT, on R011 WSR to WSR. <i>1. Between VEPOL and OSTOR BRNAV equipment necessary.</i>	[A500+] - SLT[R] - VEPOL[L] - OSTOR[R] - WSR.	

RWY 32			Initial climb clearance 4000 ft
SID	ROUTING	GPS/FMS RNAV	
DHE 3N	HELGOLAND THREE NOVEMBER - On track 324° SLT to 3.0 DME WES; RT, on track 176° to SLT; on track 164° SLT to VEPOL; RT, on R055 DHE to DHE.	[A500+] - <u>XW100</u> [R] - XW101 - SLT[L] - VEPOL[R] - DHE.	
LBE 5N	ELBE FIVE NOVEMBER - On track 324° SLT to 3.0 DME WES; RT, on track 176° to SLT; on track 134° SLT to BARDU, on R335 LBE to LBE.	[A500+] - <u>XW100</u> [R] - XW101 - SLT[L] - BARDU[R] - LBE.	
WSR 5N	WESER FIVE NOVEMBER - On track 324° SLT to 3.0 DME WES; RT, on track 176° to SLT; on track 164° SLT to VEPOL; LT, on track 156° to OSTOR; RT, on R011 WSR to WSR. <i>1. Between VEPOL and OSTOR BRNAV equipment necessary.</i>	[A500+] - <u>XW100</u> [R] - XW101 - SLT[L] - VEPOL[L] - OSTOR[R] - WSR.	

(Sample: XW100 fly-over way point)

Contact BREMEN RADAR immediately after take-off!

Valid for flight simulation use only - do not use for real life navigation



CHANGES: Procedure, Runway Designation.