

INFO
129.25

BREMEN RADAR
123.92

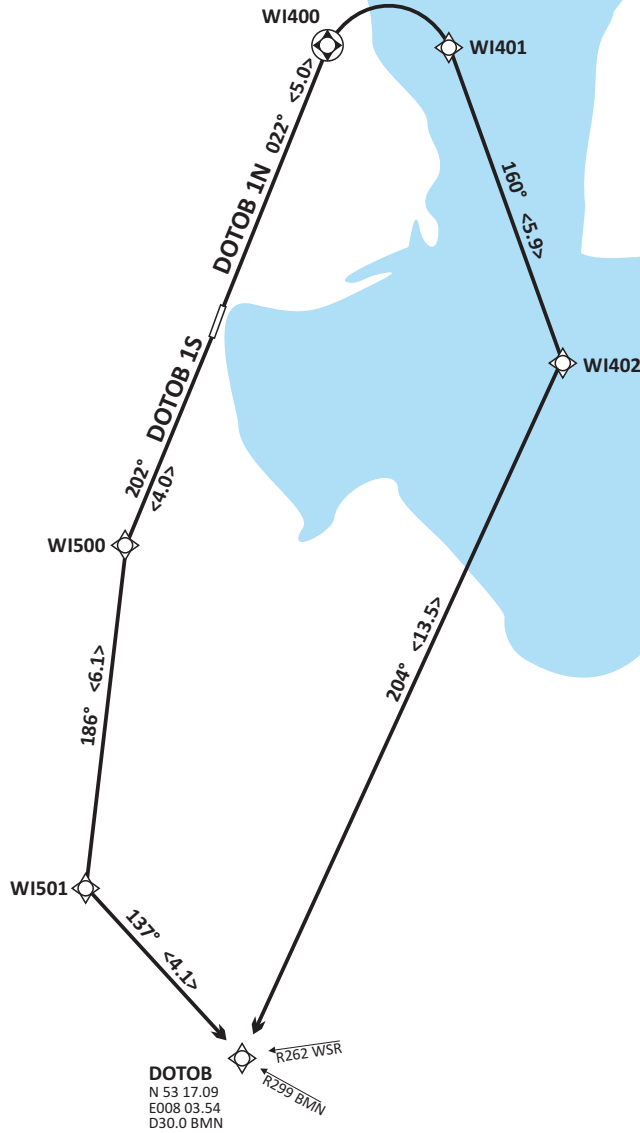
Apt Elev
19'

Alt Set: hPa (IN on request)
Trans level: by ATC
Trans alt: 5000'

BEARINGS AND TRACKS
ARE MAGNETIC.
ALTITUDES IN FEET MSL.

MSA
from ARP
2200 25NM

DEPARTURES ENTERING
CONTROLLED AIRSPACE
WHEN PASSING 1000 GND



WESER
112.90 WSR
- - - - -

BREMEN
D117.45 BMN
- - - - -

Designator	Route	After Take-Off		RNAV (GPS)
		Climb to	Contact	
DOTOB 1N (RWY 02)	DOTOB ONE NOVEMBER - Climb on track 022° to WI400; RT, via Wi401 on track 160° to WI402; RT, on track 204° to DOTOB.	4000 ft	Bremen Radar 123.920	[A500+] - WI400[R] - WI401 - WI402[R] - DOTOB.
DOTOB 1S (RWY 22)	DOTOB ONE SIERRA - Climb on track 202° to WI500; LT, on track 186° To WI501; LT, on track 137° to DOTOB.	4000 ft	Bremen Radar 123.920	[A500+] - WI500[L] - WI501[L] - DOTOB.

(Sample: WI400 fly-over waypoint)

Valid for flight simulation use only - do not use for real life navigation

CHANGES: New chart