

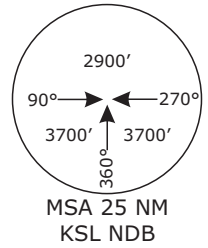
# EDVK/KSF KASSEL-CALDEN

APP CHART NO.7

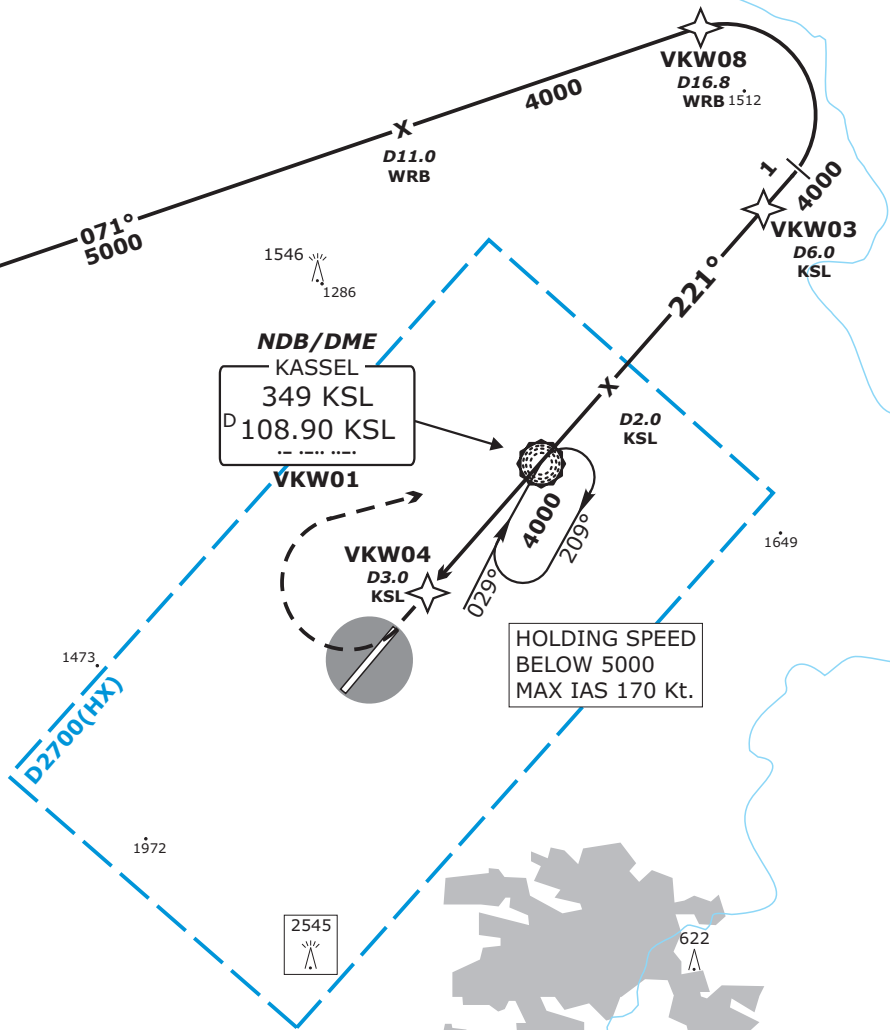
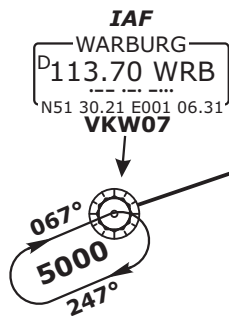
**KASSEL, GERMANY**  
**NDB/DME No.2 RWY 22**  
**ACFT CAT A & B**

Valid for flight simulation use only - do not use for real life navigation

BREMEN Radar 123.92		KASSEL Tower 118.10		
	Final Apch Crs <b>221°</b>	<b>KSL</b> <b>2190'</b> (1282')	DA(H) Refer to Minimums	Apt Elev 908'
<b>MISSED APCH:</b> RT to KSL NDB (VKW01) not later than 4.0 DME KSL, climbing to 4000'. During turn max IAS 160 kt.				
Alt Set: hPa (IN on req)		Trans level: By ATC		Trans alt: 5000'

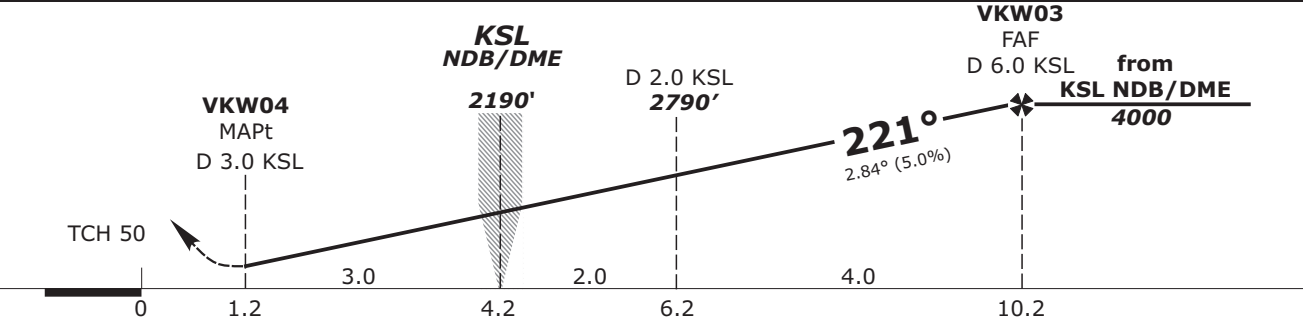


BEARINGS ARE MAGNETIC  
ALTITUDES, ELEVATIONS  
AND HEIGHTS IN ft



HOLDING SPEED  
BELOW 5000  
MAX IAS 170 Kt.

KSL DME	3.0	2.0	1.0	0.0	1.0	2.0	3.0	4.0	5.0
ALTITUDE	1290	1590'	1890'	2190'	2490'	2790'	3100'	3400'	3700'



<b>Flight Simulator-OPS</b>		Gnd speed-Kts	80	100	120	140
LLZ/DME DA(H) <b>1310'</b> (400')		LLZ 2.84° or Descent Gradient 5.0%	400	500	600	700
RVR 1500m		MAP at VKW04, 3.0 DME KSL				
A						
B						
C						
D						

CHANGES: Communication, CTR added, Layout

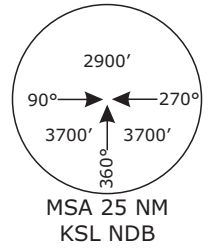
# EDVK/KSF KASSEL-CALDEN

APP CHART NO.8

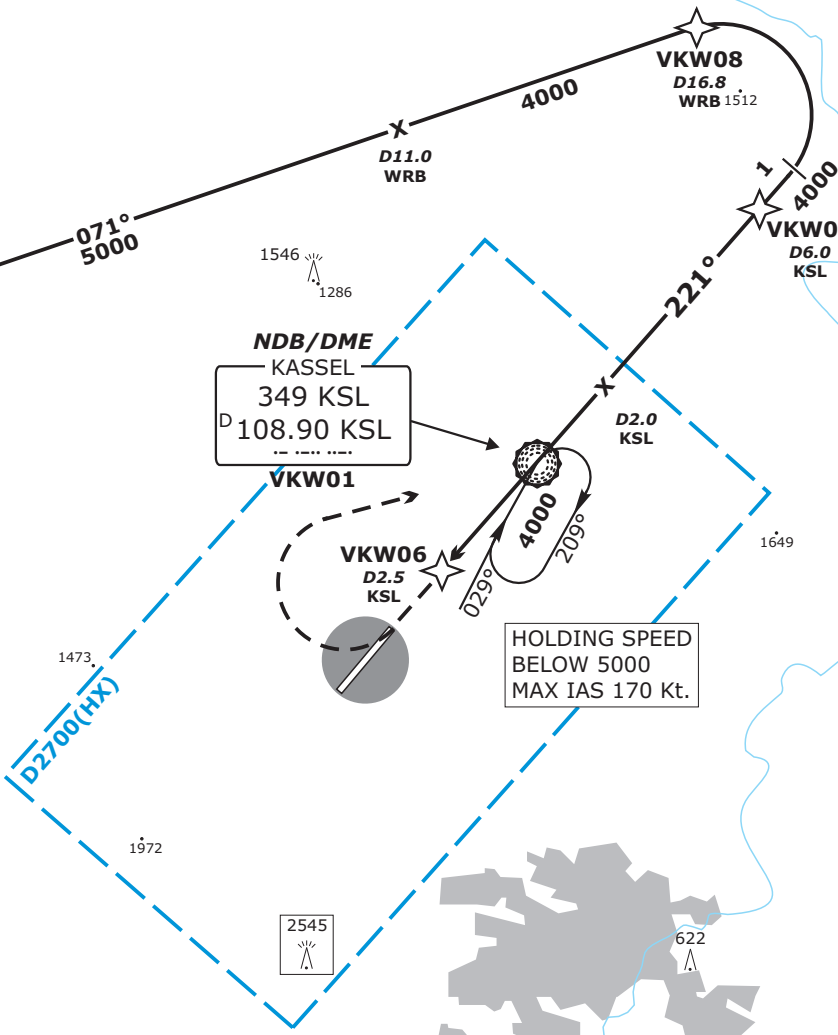
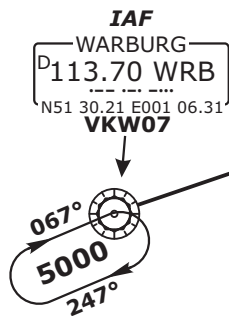
**KASSEL, GERMANY**  
**NDB/DME No.2 RWY 22**  
**ACFT CAT C & D**

Valid for flight simulation use only - do not use for real life navigation

BREMEN Radar 123.92		KASSEL Tower 118.10		
	Final Apch Crs <b>221°</b>	<b>KSL</b> <b>2190'</b> (1282')	DA(H) Refer to Minimums	Apt Elev 908'
<b>MISSED APCH:</b> RT to KSL NDB (VKW01) not later than 3.5 DME KSL, climbing to 4000'. During turn max IAS 185 kt.				
Alt Set: hPa (IN on req)		Trans level: By ATC		Trans alt: 5000'

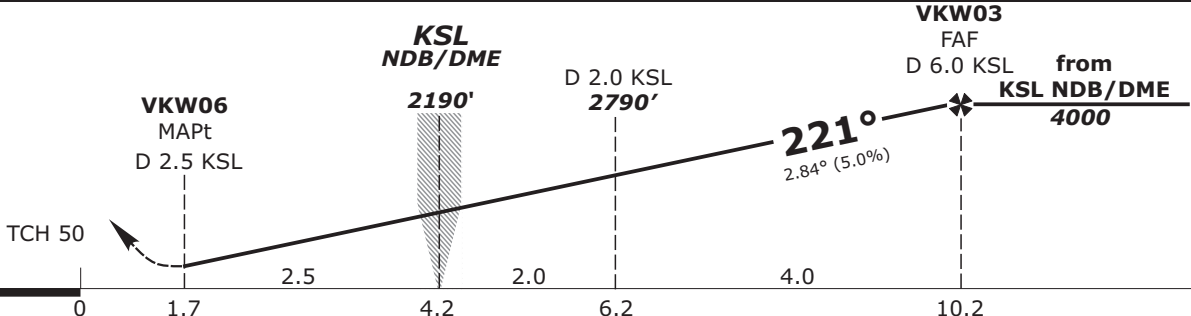


BEARINGS ARE MAGNETIC  
ALTITUDES, ELEVATIONS  
AND HEIGHTS IN ft



HOLDING SPEED  
BELOW 5000  
MAX IAS 170 Kt.

KSL DME	3.0	2.0	1.0	0.0	1.0	2.0	3.0	4.0	5.0
ALTITUDE	1290	1590'	1890'	2190'	2490'	2790'	3100'	3400'	3700'



**Flight Simulator-OPS**

<b>LLZ/DME</b> DA(H) <b>1310'</b> (400')	Gnd speed-Kts					
	80	100	120	140	160	180
RVR 1500m	LLZ 2.84° or Descent Gradient 5.0%					
	400	500	600	700	800	900
MAP at VKW06, 2.5 DME KSL						

CHANGES: Communication, CTR added, Layout