

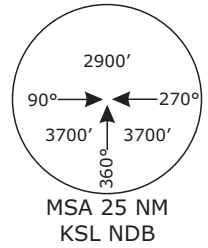
# EDVK/KSF KASSEL-CALDEN

APP CHART NO.5

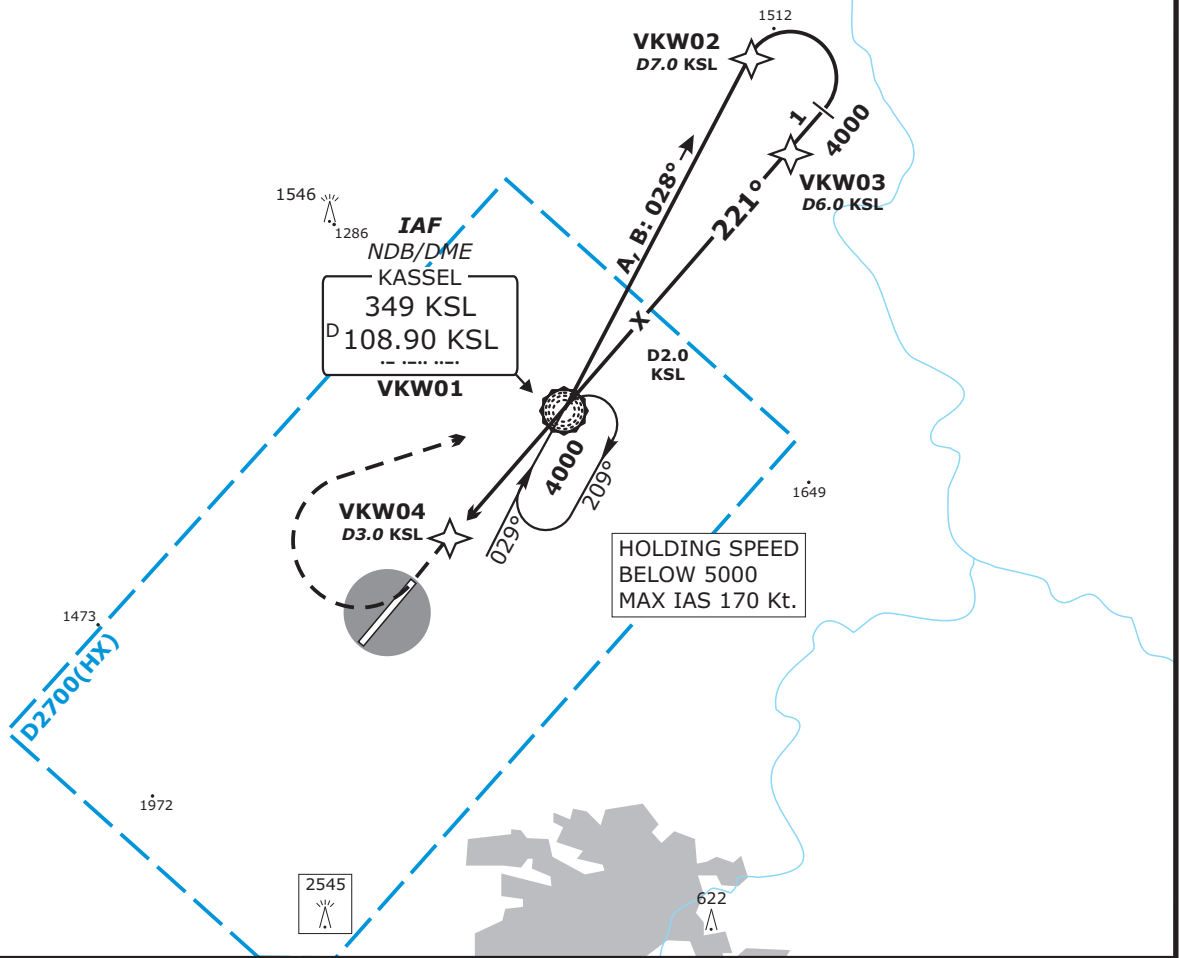
**KASSEL, GERMANY**  
**NDB/DME (GPS) No.1 RWY 22**  
**ACFT CAT A & B**

Valid for flight simulation use only - do not use for real life navigation

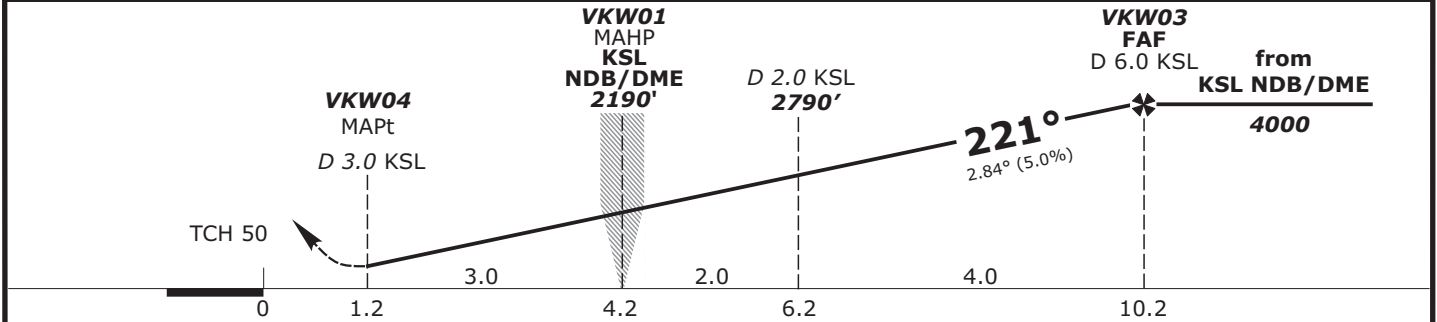
BREMEN Radar 123.92		KASSEL Tower 118.10		
	<i>Final Apch Crs</i> <b>221°</b>	<b>KSL</b> <b>2190'</b> (1282')	<i>DA(H)</i> <i>Refer to Minimums</i>	<i>Apt Elev</i> 908'
<b>MISSED APCH:</b> RT to KSL NDB (VKW01) not later than 4 DME KSL, climbing to 4000'. During turn max IAS 160 kt.				
Alt Set: hPa (IN on req)		Trans level: By ATC		Trans alt: 5000'



BEARINGS ARE MAGNETIC  
ALTITUDES, ELEVATIONS  
AND HEIGHTS IN ft



KSL DME	3.0	2.0	1.0	0.0	1.0	2.0	3.0	4.0	5.0
ALTITUDE	1290	1590'	1890'	2190'	2490'	2790'	3100'	3400'	3700'



<b>Flight Simulator-OPS</b>		Gnd speed-Kts	80	100	120	140
<b>LLZ/DME</b> DA(H) <b>1310'</b> (400')		LLZ 2.84° or Descent Gradient 5.0%	400	500	600	700
A		MAP at VKW04, 3.0 DME KSL				
B						
C						
D						
RVR 1500m						

CHANGES: Communication, CTR added, Layout

# EDVK/KSF KASSEL-CALDEN

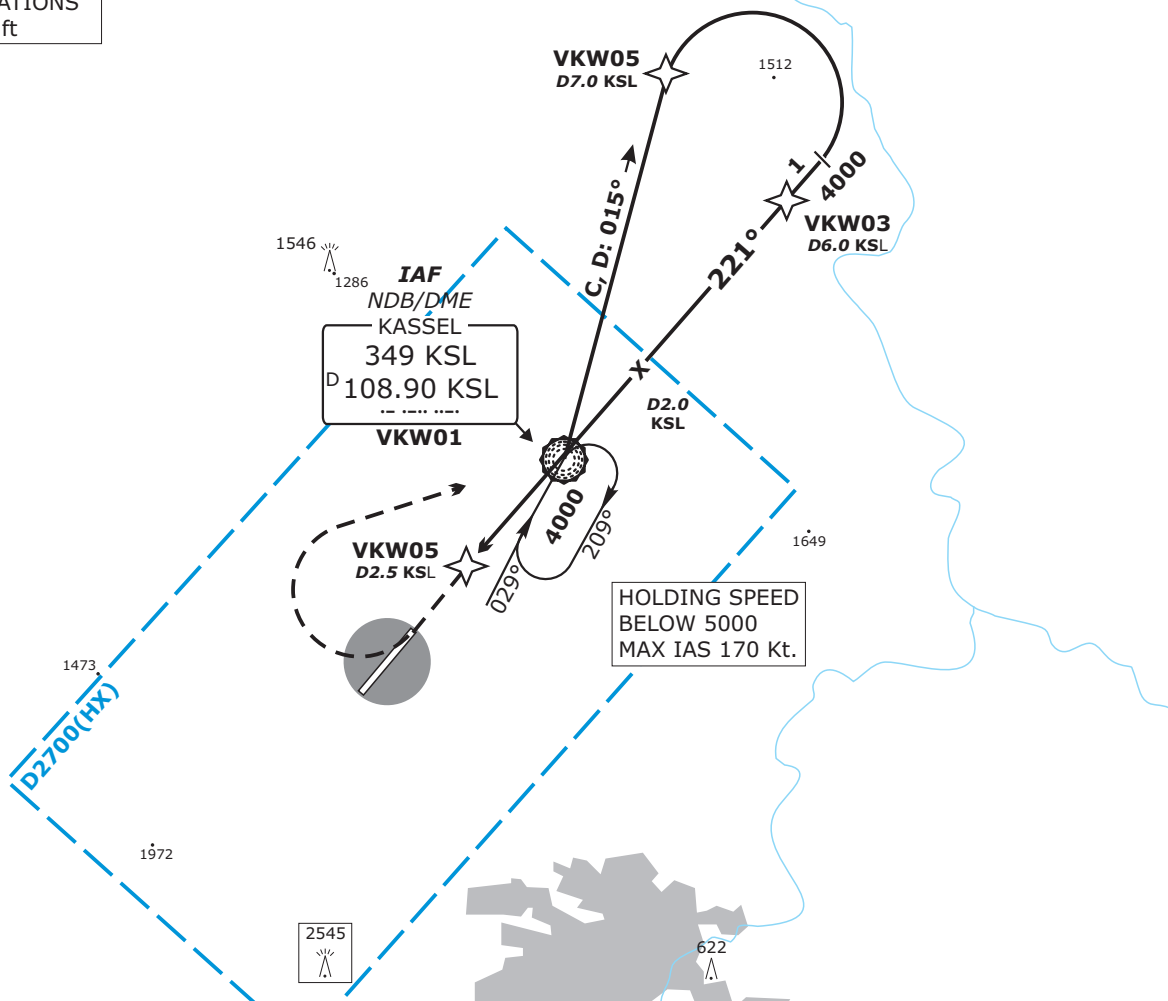
APP CHART NO.6

**KASSEL, GERMANY**  
**NDB/DME (GPS) No. 1 RWY 22**  
**ACFT CAT C & D**

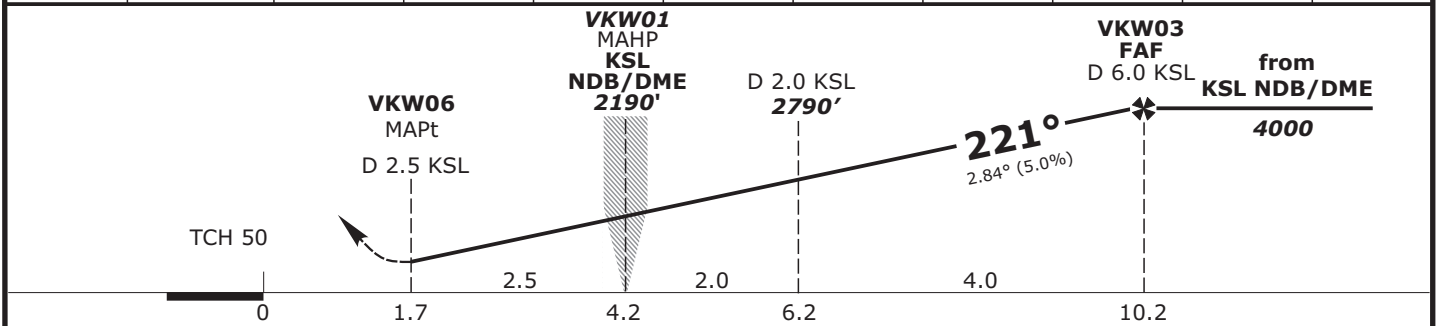
Valid for flight simulation use only - do not use for real life navigation

BREMEN Radar 123.92		KASSEL Tower 118.10			
	Final Apch Crs <b>221°</b>	<b>KSL</b> <b>2190'</b> (1282')	DA(H) Refer to Minimums	Apt Elev 908'	
<b>MISSED APCH:</b> RT to KSL NDB (VKW01) not later than 3.5 DME KSL, climbing to 4000'. During turn max IAS 185 kt.					
Alt Set: hPa (IN on req)		Trans level: By ATC		Trans alt: 5000'	

BEARINGS ARE MAGNETIC  
ALTITUDES, ELEVATIONS  
AND HEIGHTS IN ft



KSL DME	3.0	2.0	1.0	0.0	1.0	2.0	3.0	4.0	5.0
ALTITUDE	1290	1590'	1890'	2190'	2490'	2790'	3100'	3400'	3700'



<b>Flight Simulator-OPS</b>		Gnd speed-Kts	80	100	120	140	160	180
LLZ/DME DA(H) <b>1310'</b> (400')		LLZ 2.84° or Descent Gradient 5.0%	400	500	600	700	800	900
MAP at VKW06, 2.5 DME KSL								
A								
B								
C								
D	RVR 1500m							

CHANGES: Communication, CTR added, Layout