

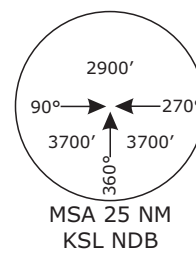
EDVK/KSF KASSEL-CALDEN

APP CHART NO.1

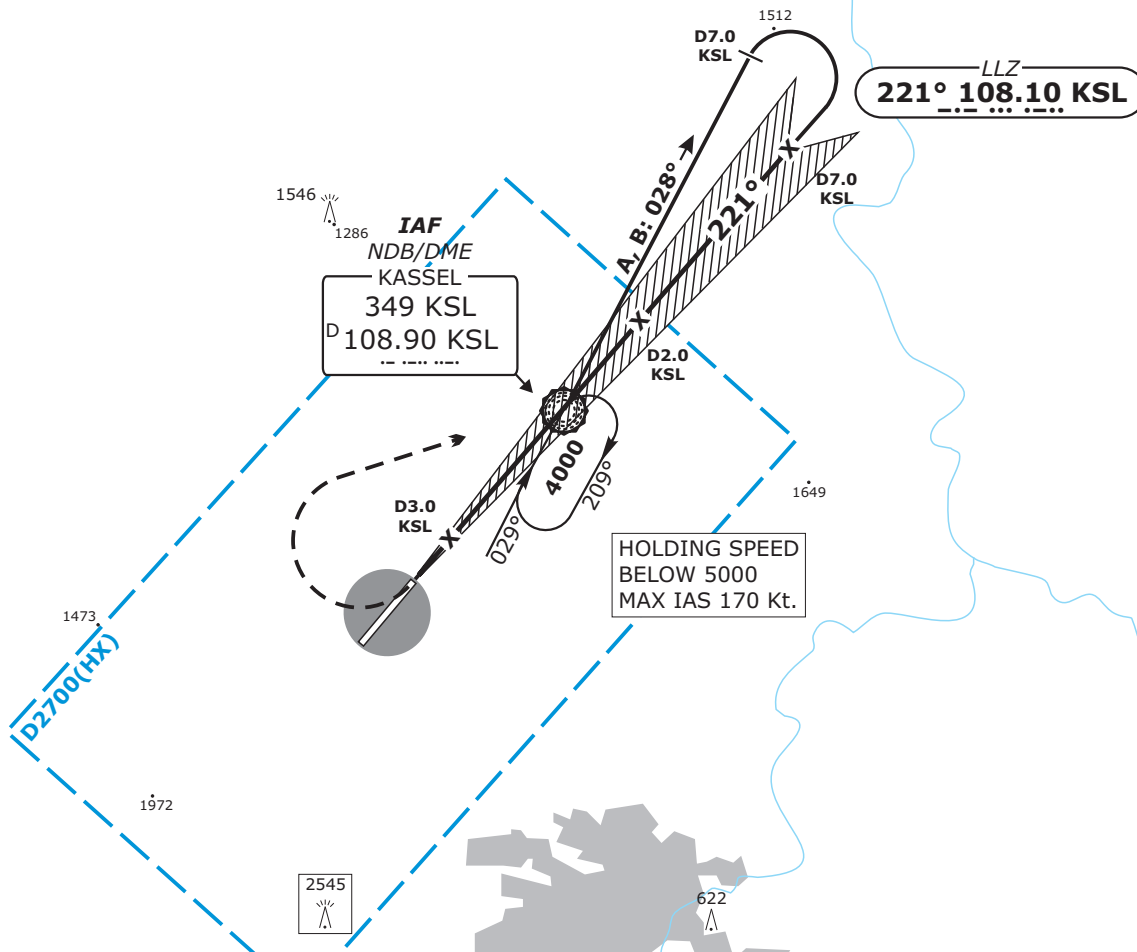
KASSEL, GERMANY
LLZ-DME No.1 RWY 22
ACFT CAT A & B

Valid for flight simulation use only - do not use for real life navigation

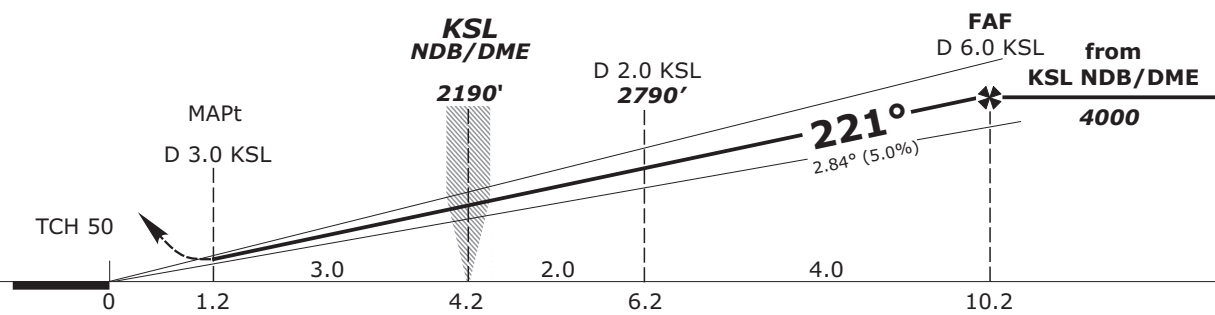
BREMEN Radar 123.92			KASSEL Tower 118.10		
LLZ KSL 108.10	Final Apch Crs 221°	KSL 2190' (1282')	LLZ/DME DA(H) Refer to Minimums	Apt Elev 908'	
MISSED APCH: RT to KSL NDB not later than 4 DME KSL, climbing to 4000'. During turn max IAS 160 kt.					
Alt Set: hPa (IN on req)		Trans level: By ATC		Trans alt: 5000'	



BEARINGS ARE MAGNETIC
ALTITUDES, ELEVATIONS
AND HEIGHTS IN ft



KSL DME	3.0	2.0	1.0	0.0	1.0	2.0	3.0	4.0	5.0
ALTITUDE	1290	1590'	1890'	2190'	2490'	2790'	3100'	3400'	3700'



Flight Simulator-OPS		Gnd speed-Kts	80	100	120	140
LLZ/DME DA(H) 1310' (400')		LLZ 2.84° or Descent Gradient 5.0%	400	500	600	700
MAP at 3.0 DME KSL						
A	RVR 1500m					
B						
C						
D						

CHANGES: Communication, CTR added, Layout

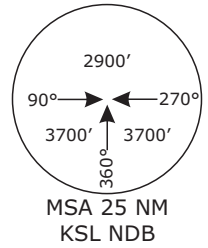
EDVK/KSF KASSEL-CALDEN

APP CHART NO.2

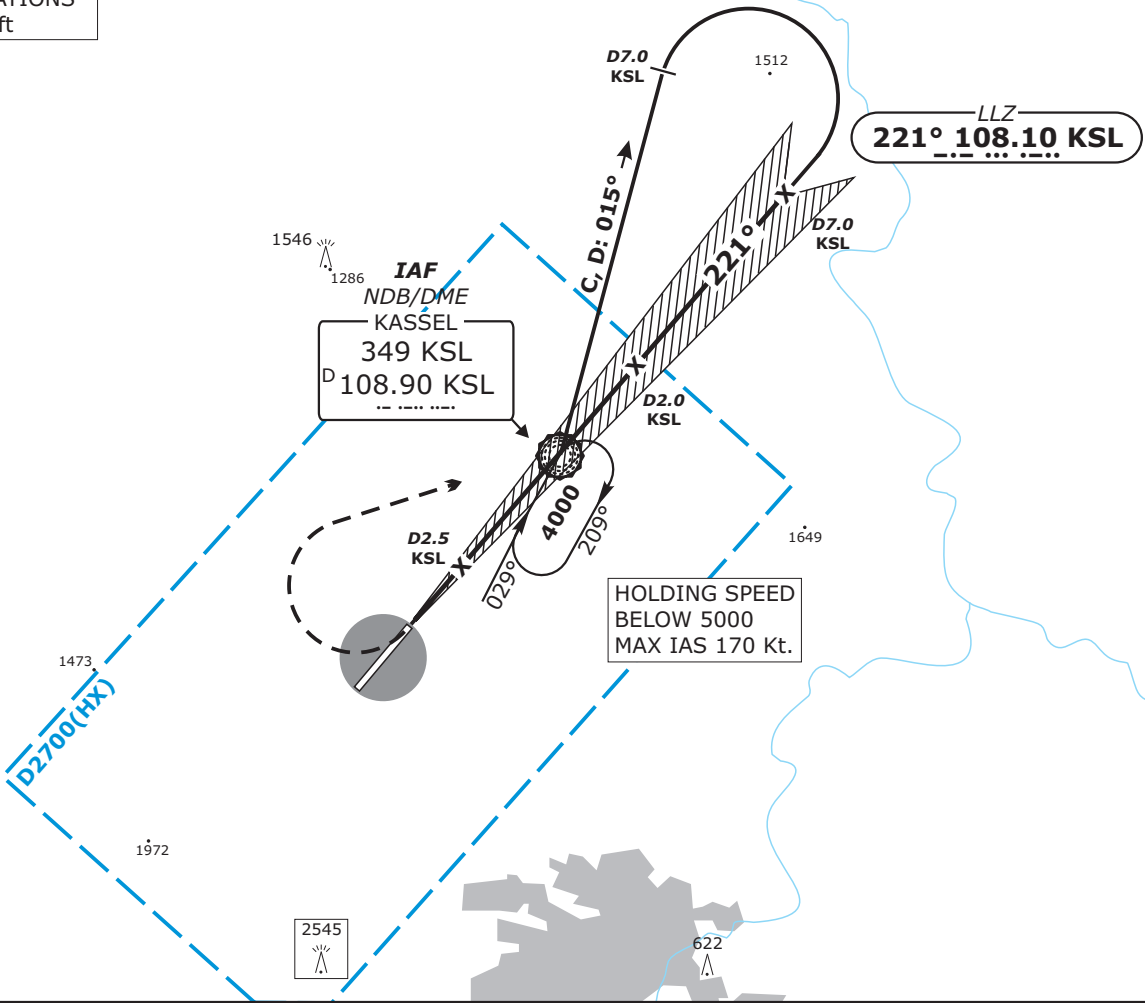
KASSEL, GERMANY
LLZ-DME No. 1 RWY 22
ACFT CAT C & D

Valid for flight simulation use only - do not use for real life navigation

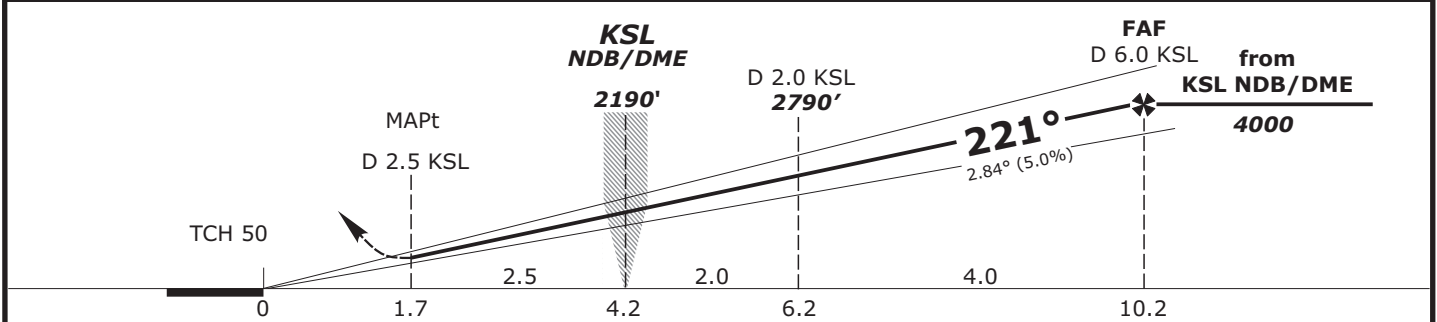
BREMEN Radar 123.92			KASSEL Tower 118.10		
LLZ KSL 108.10	Final Apch Crs 221°	KSL 2190' (1282')	LLZ/DME DA(H) Refer to Minimums	Apt Elev 908'	
MISSED APCH: RT to KSL NDB not later than 3.5 DME KSL, climbing to 4000'. During turn max IAS 185 kt.					
Alt Set: hPa (IN on req)		Trans level: By ATC		Trans alt: 5000'	



BEARINGS ARE MAGNETIC
ALTITUDES, ELEVATIONS
AND HEIGHTS IN ft



KSL DME	3.0	2.0	1.0	0.0	1.0	2.0	3.0	4.0	5.0
ALTITUDE	1290	1590'	1890'	2190'	2490'	2790'	3100'	3400'	3700'



Flight Simulator-OPS		Gnd speed-Kts	80	100	120	140	160	180
LLZ/DME DA(H) 1310' (400')		LLZ 2.84° or Descent Gradient 5.0%	400	500	600	700	800	900
MAP at 2.5 DME KSL								
A								
B								
C								
D	RVR 1500m							

CHANGES: Communication, CTR added, Layout