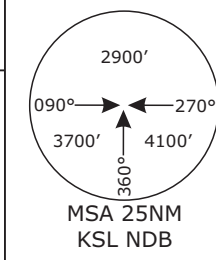


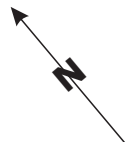
BREMEN Radar
123.92

KASSEL Tower
118.10

Apt Elev **908'**



Valid for flight simulation use only - do not use for real life navigation

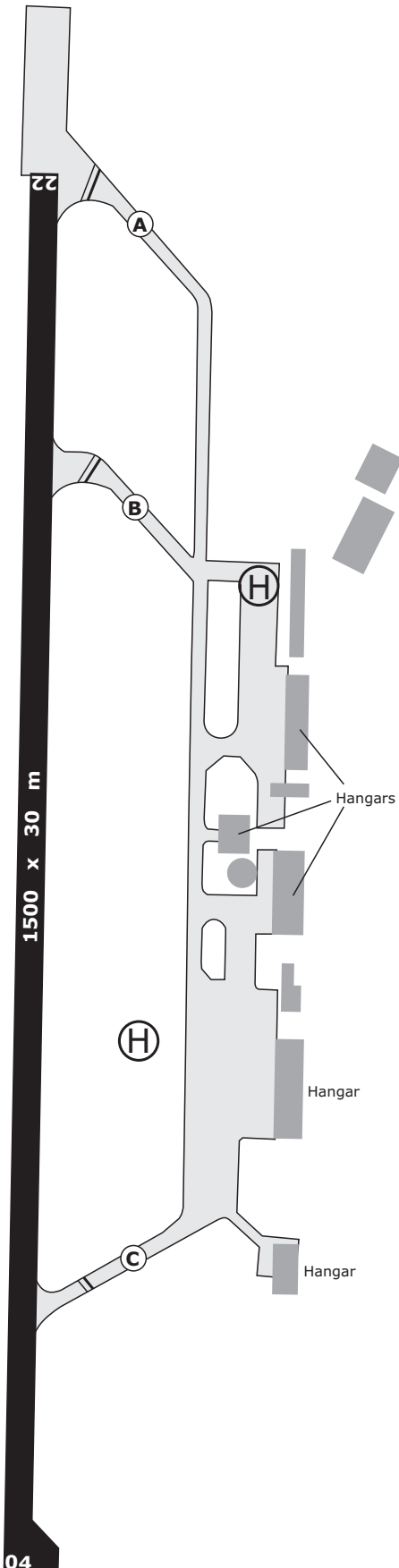


(H)

700 x 30 m

04

(H)



INTERSECTION TAKE-OFF

RWY	TWY	TORA	TODA	ASDA
04	C	1200	1260	1200
22	B	1180	1180	1090
22	A	1500	1500	1410

EDVK/KSF KASSEL-CALDEN

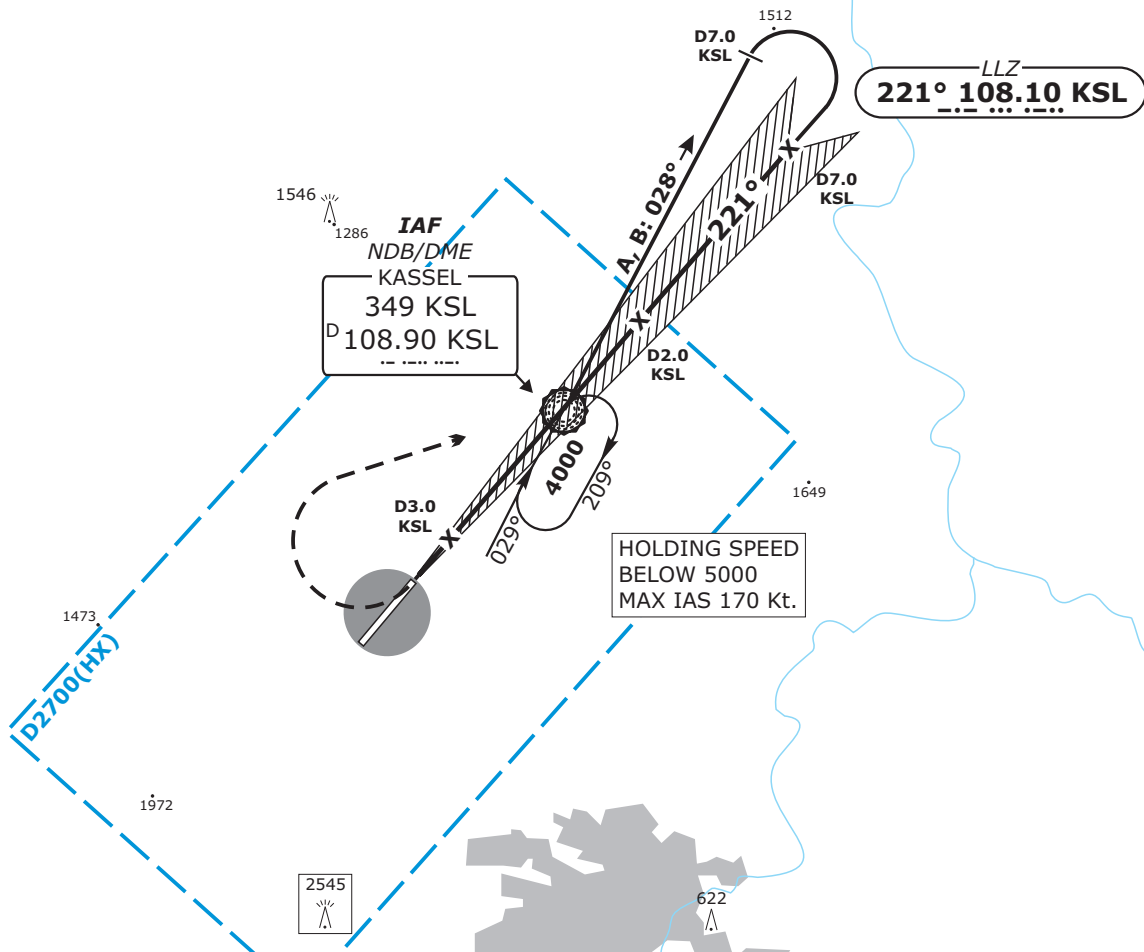
APP CHART NO.1

KASSEL, GERMANY
LLZ-DME No.1 RWY 22
ACFT CAT A & B

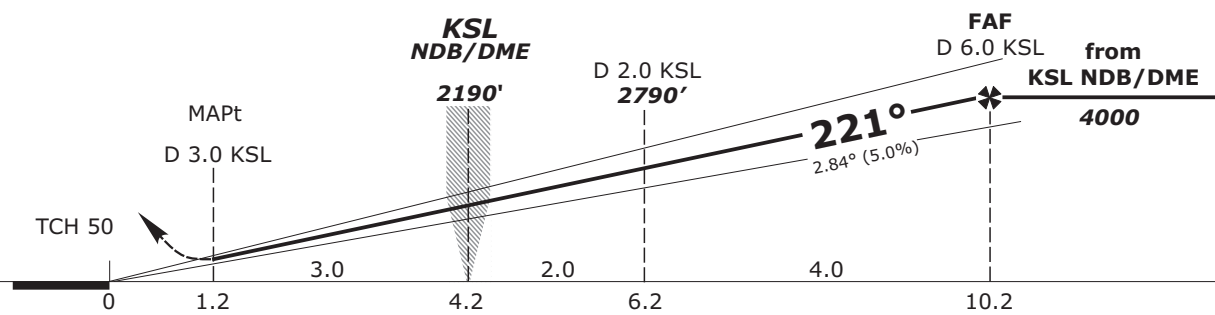
Valid for flight simulation use only - do not use for real life navigation

BREMEN Radar 123.92			KASSEL Tower 118.10		
LLZ KSL 108.10	Final Apch Crs 221°	KSL 2190' (1282')	LLZ/DME DA(H) Refer to Minimums	Apt Elev 908'	
MISSED APCH: RT to KSL NDB not later than 4 DME KSL, climbing to 4000'. During turn max IAS 160 kt.					
Alt Set: hPa (IN on req)		Trans level: By ATC		Trans alt: 5000'	

BEARINGS ARE MAGNETIC
ALTITUDES, ELEVATIONS
AND HEIGHTS IN ft



KSL DME	3.0	2.0	1.0	0.0	1.0	2.0	3.0	4.0	5.0
ALTITUDE	1290	1590'	1890'	2190'	2490'	2790'	3100'	3400'	3700'



Flight Simulator-OPS		Gnd speed-Kts	80	100	120	140
LLZ/DME DA(H) 1310' (400')		LLZ 2.84° or Descent Gradient 5.0%	400	500	600	700
A		MAP at 3.0 DME KSL				
B						
C						
D						
RVR 1500m						

CHANGES: Communication, CTR added, Layout

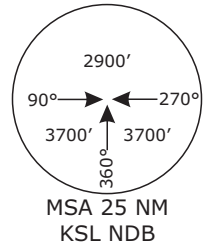
EDVK/KSF KASSEL-CALDEN

APP CHART NO.2

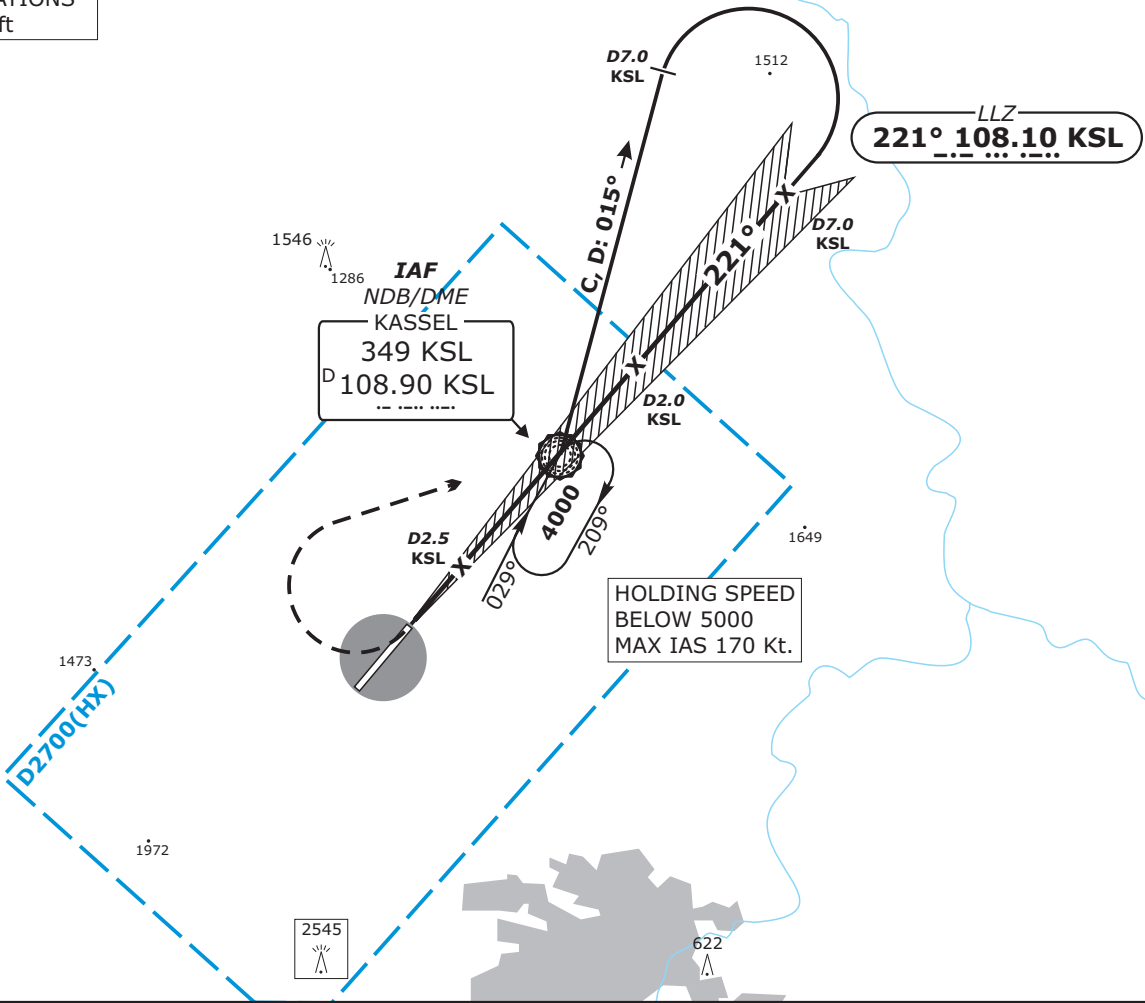
KASSEL, GERMANY
LLZ-DME No. 1 RWY 22
ACFT CAT C & D

Valid for flight simulation use only - do not use for real life navigation

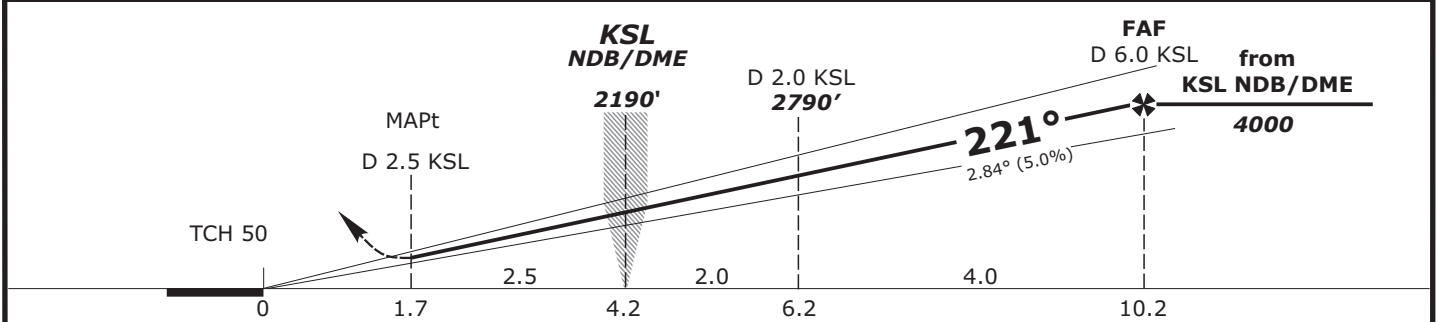
BREMEN Radar 123.92			KASSEL Tower 118.10		
LLZ KSL 108.10	Final Apch Crs 221°	KSL 2190' (1282')	LLZ/DME DA(H) Refer to Minimums	Apt Elev 908'	
MISSED APCH: RT to KSL NDB not later than 3.5 DME KSL, climbing to 4000'. During turn max IAS 185 kt.					
Alt Set: hPa (IN on req)		Trans level: By ATC		Trans alt: 5000'	



BEARINGS ARE MAGNETIC
ALTITUDES, ELEVATIONS
AND HEIGHTS IN ft



KSL DME	3.0	2.0	1.0	0.0	1.0	2.0	3.0	4.0	5.0
ALTITUDE	1290	1590'	1890'	2190'	2490'	2790'	3100'	3400'	3700'



Flight Simulator-OPS		Gnd speed-Kts	80	100	120	140	160	180
LLZ/DME DA(H) 1310' (400')		LLZ 2.84° or Descent Gradient 5.0%	400	500	600	700	800	900
MAP at 2.5 DME KSL								
A								
B								
C								
D	RVR 1500m							

CHANGES: Communication, CTR added, Layout

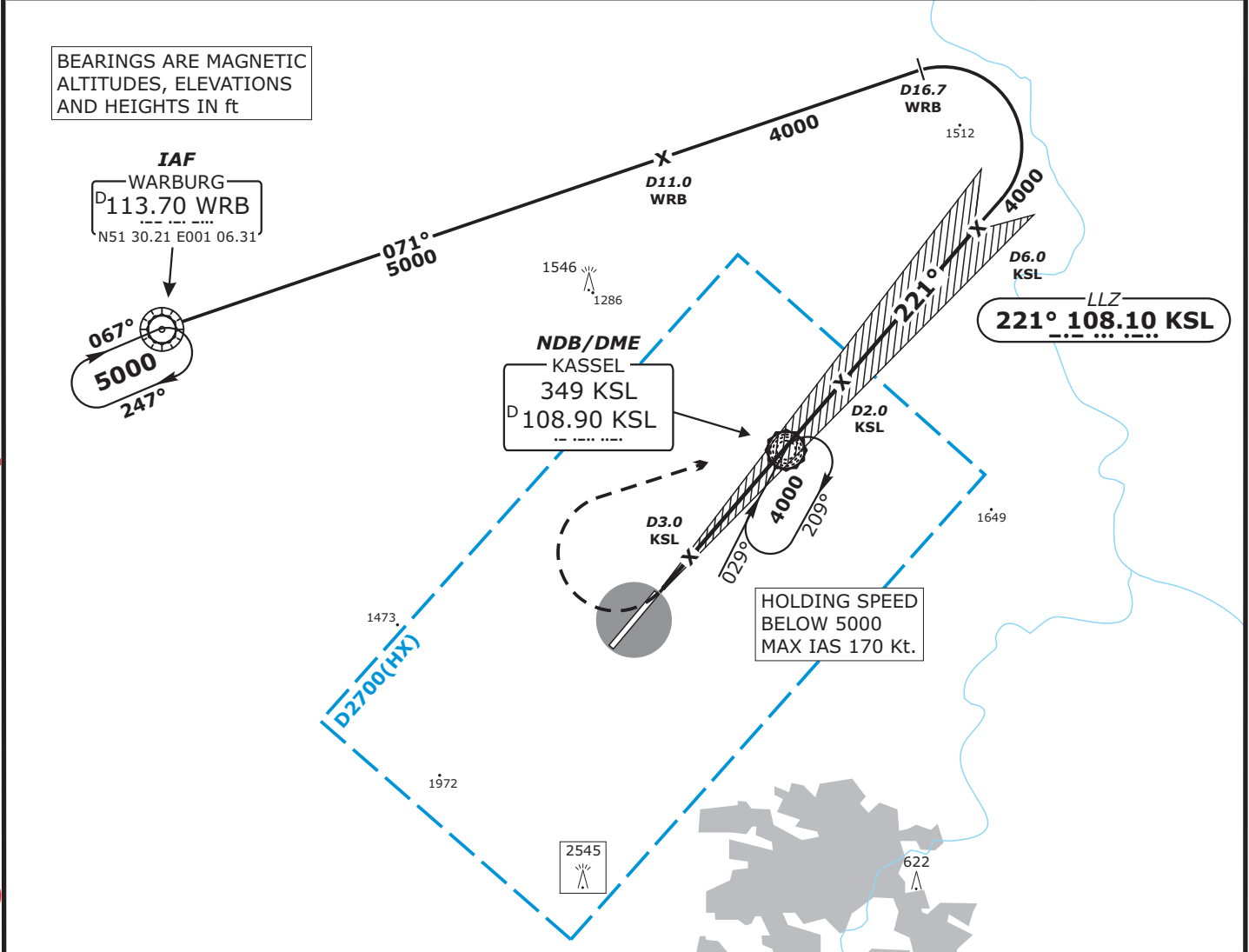
EDVK/KSF KASSEL-CALDEN

APP CHART NO.3

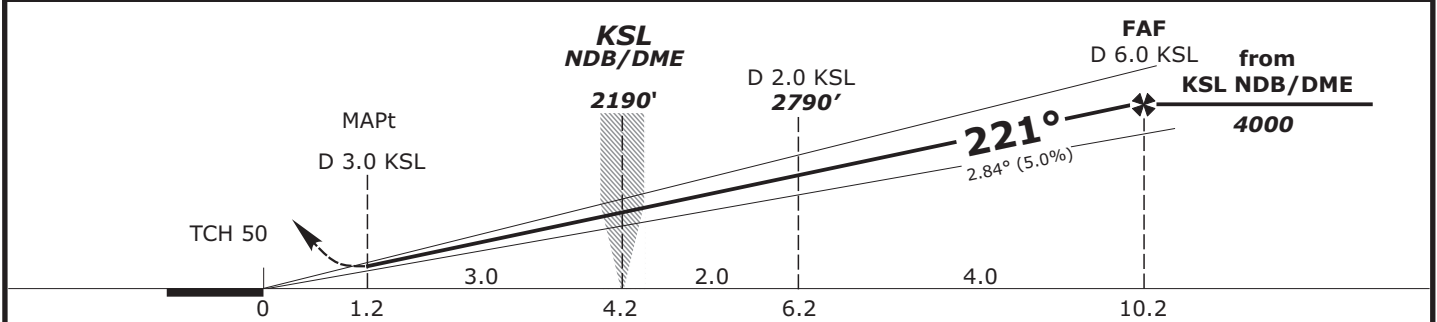
KASSEL, GERMANY
LLZ-DME No.2 RWY 22
ACFT CAT A & B

Valid for flight simulation use only - do not use for real life navigation

BREMEN Radar 123.92			KASSEL Tower 118.10		
LLZ KSL 108.10	Final Apch Crs 221°	KSL 2190' (1282')	LLZ/DME DA(H) Refer to Minimums	Apt Elev 908'	
MISSED APCH: RT to KSL NDB not later than 4 DME KSL, climbing to 4000'. During turn max IAS 160 kt.					
Alt Set: hPa (IN on req)		Trans level: By ATC		Trans alt: 5000'	



KSL DME	3.0	2.0	1.0	0.0	1.0	2.0	3.0	4.0	5.0
ALTITUDE	1290	1590'	1890'	2190'	2490'	2790'	3100'	3400'	3700'



Flight Simulator-OPS		Gnd speed-Kts	80	100	120	140
LLZ/DME DA(H) 1310' (400')		LLZ 2.84° or Descent Gradient 5.0%	400	500	600	700
RVR 1500m		MAP at 3.0 DME KSL				
A						
B						
C						
D						

CHANGES: Communication, CTR added, Layout

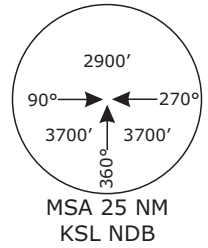
EDVK/KSF KASSEL-CALDEN

APP CHART NO.4

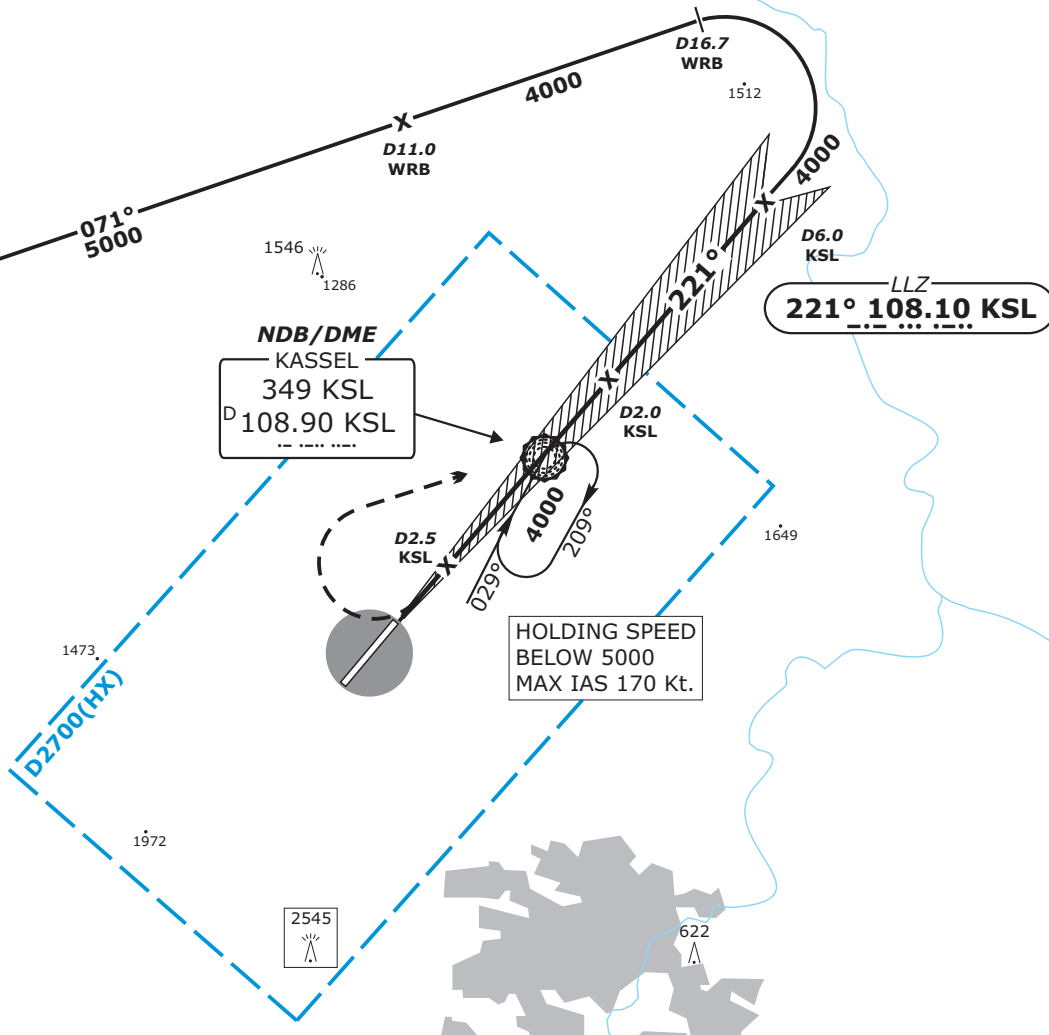
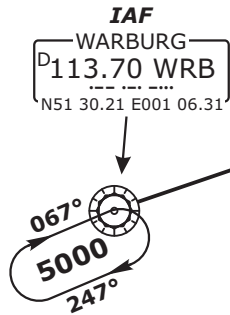
KASSEL, GERMANY
LLZ-DME No.2 RWY 22
ACFT CAT C & D

Valid for flight simulation use only - do not use for real life navigation

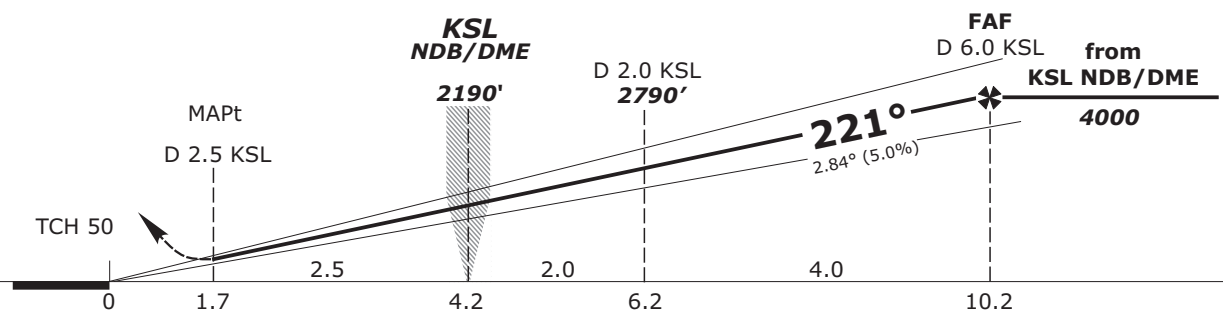
BREMEN Radar 123.92			KASSEL Tower 118.10		
LLZ KSL 108.10	Final Apch Crs 221°	KSL 2190' (1282')	LLZ/DME DA(H) Refer to Minimums	Apt Elev 908'	
MISSED APCH: RT to KSL NDB not later than 3.5 DME KSL, climbing to 4000'. During turn max IAS 185 kt.					
Alt Set: hPa (IN on req)		Trans level: By ATC		Trans alt: 5000'	



BEARINGS ARE MAGNETIC
ALTITUDES, ELEVATIONS
AND HEIGHTS IN ft



KSL DME	3.0	2.0	1.0	0.0	1.0	2.0	3.0	4.0	5.0
ALTITUDE	1290	1590'	1890'	2190'	2490'	2790'	3100'	3400'	3700'



Flight Simulator-OPS		Gnd speed-Kts	80	100	120	140	160	180
LLZ/DME DA(H) 1310' (400')		LLZ 2.84° or Descent Gradient 5.0%	400	500	600	700	800	900
MAP at 2.5 DME KSL								
A								
B								
C								
D	RVR 1500m							

CHANGES: Communication, CTR added, Layout

EDVK/KSF KASSEL-CALDEN

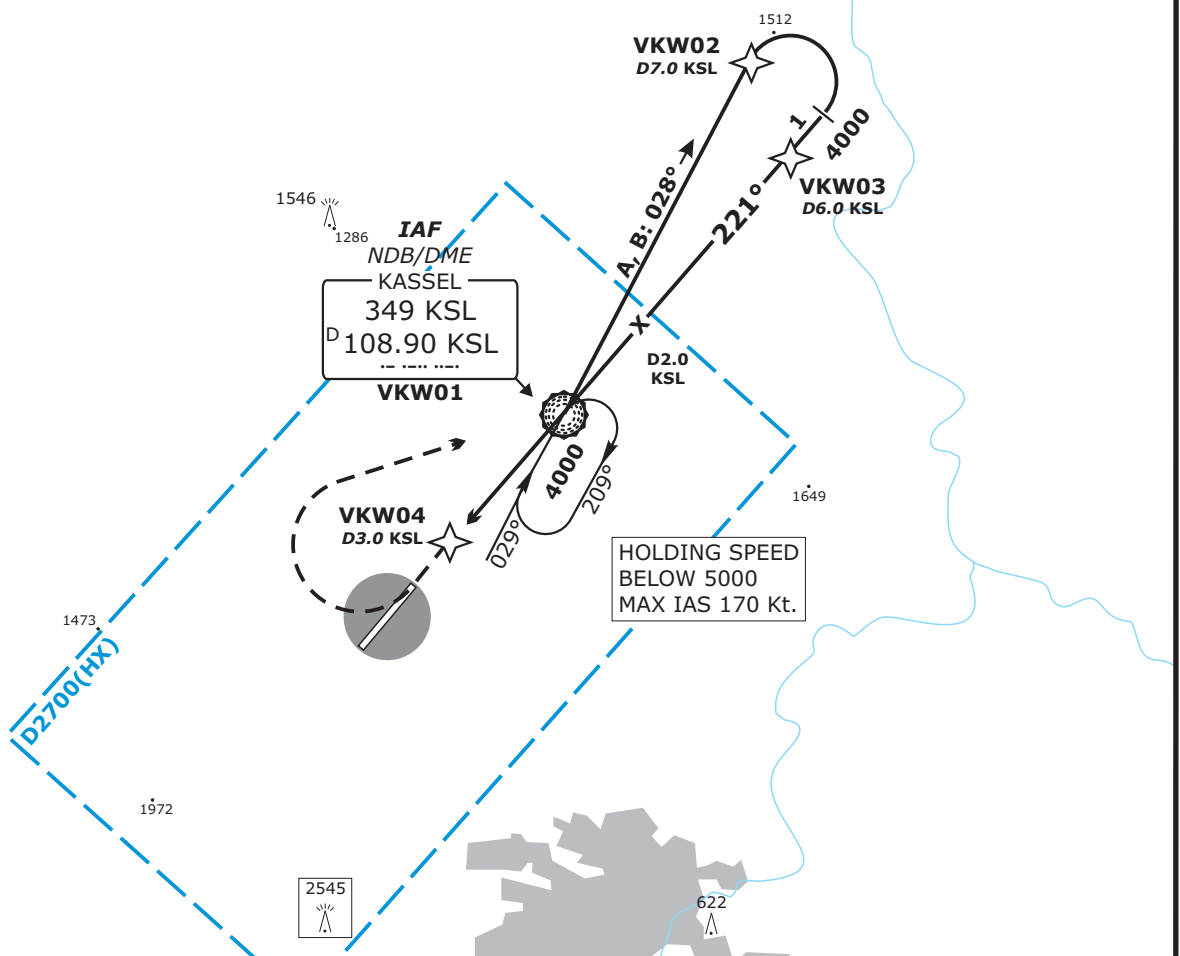
APP CHART NO.5

KASSEL, GERMANY
NDB/DME (GPS) No.1 RWY 22
ACFT CAT A & B

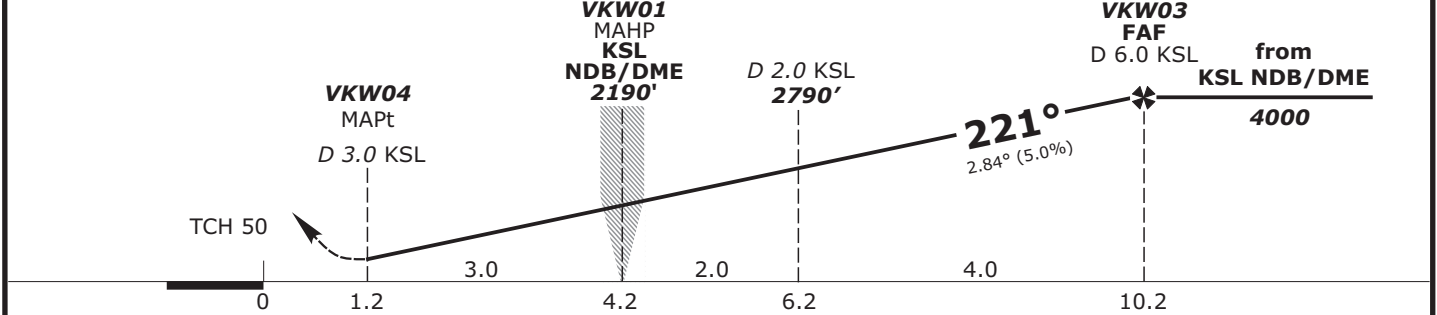
Valid for flight simulation use only - do not use for real life navigation

BREMEN Radar 123.92		KASSEL Tower 118.10			<p>MSA 25 NM KSL NDB</p>
	<i>Final Apch Crs</i> 221°	KSL 2190' (1282')	<i>DA(H)</i> <i>Refer to Minimums</i>	<i>Apt Elev</i> 908'	
MISSED APCH: RT to KSL NDB (VKW01) not later than 4 DME KSL, climbing to 4000'. During turn max IAS 160 kt.					
Alt Set: hPa (IN on req)		Trans level: By ATC		Trans alt: 5000'	

BEARINGS ARE MAGNETIC
ALTITUDES, ELEVATIONS
AND HEIGHTS IN ft



KSL DME	3.0	2.0	1.0	0.0	1.0	2.0	3.0	4.0	5.0
ALTITUDE	1290	1590'	1890'	2190'	2490'	2790'	3100'	3400'	3700'



Flight Simulator-OPS		Gnd speed-Kts	80	100	120	140
LLZ/DME DA(H) 1310' (400')		LLZ 2.84° or Descent Gradient 5.0%	400	500	600	700
MAP at VKW04, 3.0 DME KSL						
A	RVR 1500m					
B						
C						
D						

CHANGES: Communication, CTR added, Layout

EDVK/KSF KASSEL-CALDEN

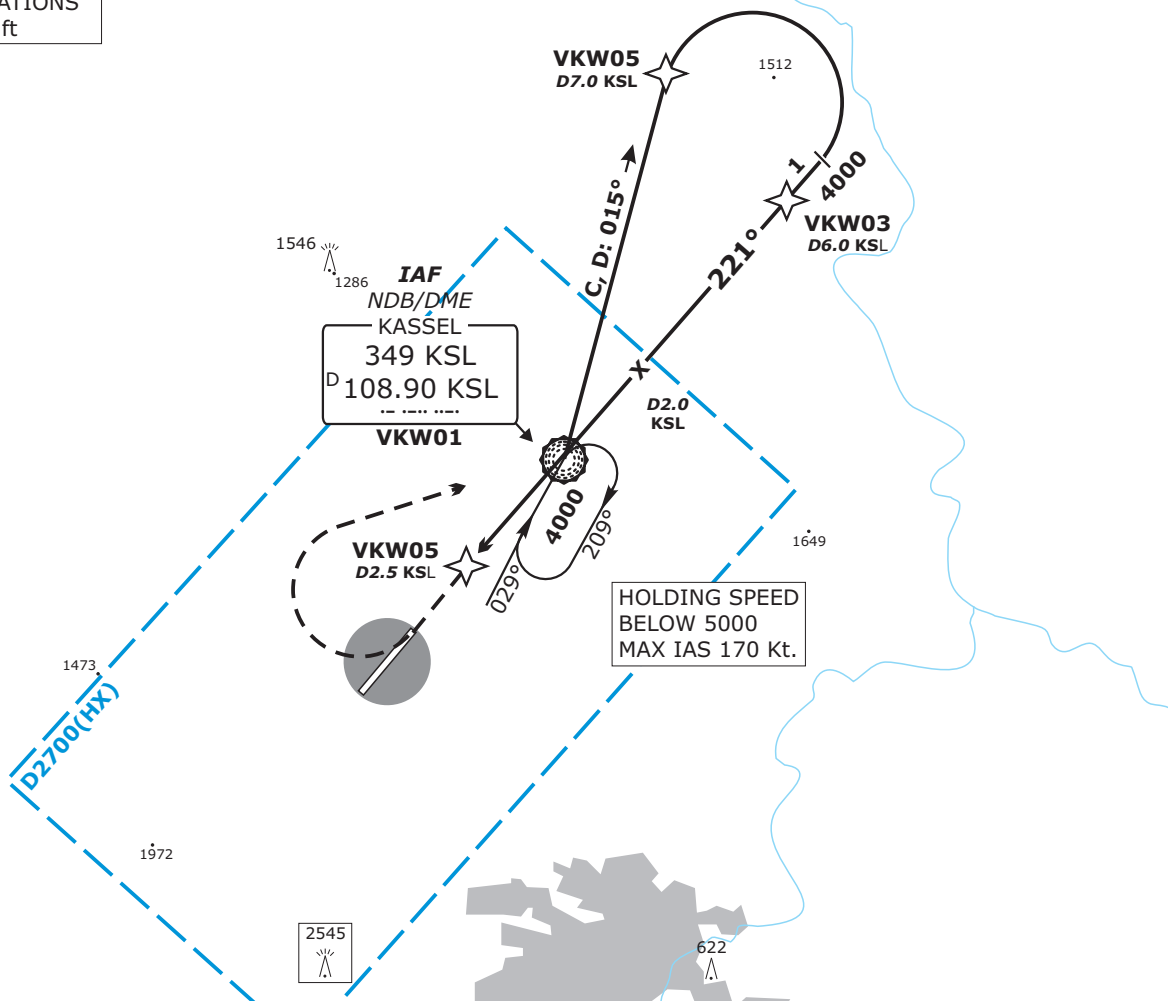
APP CHART NO.6

KASSEL, GERMANY
NDB/DME (GPS) No. 1 RWY 22
ACFT CAT C & D

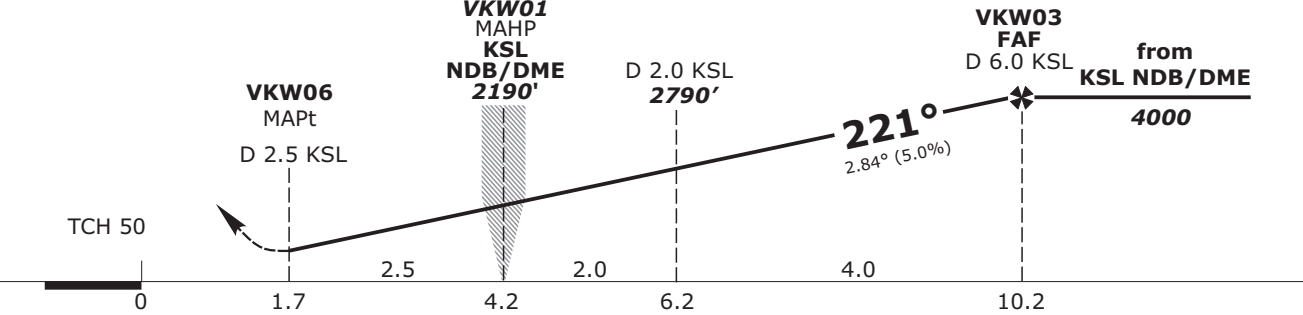
Valid for flight simulation use only - do not use for real life navigation

BREMEN Radar 123.92		KASSEL Tower 118.10			
	Final Apch Crs 221°	KSL 2190' (1282')	DA(H) Refer to Minimums	Apt Elev 908'	
MISSED APCH: RT to KSL NDB (VKW01) not later than 3.5 DME KSL, climbing to 4000'. During turn max IAS 185 kt.					
Alt Set: hPa (IN on req)		Trans level: By ATC		Trans alt: 5000'	

BEARINGS ARE MAGNETIC
ALTITUDES, ELEVATIONS
AND HEIGHTS IN ft



KSL DME	3.0	2.0	1.0	0.0	1.0	2.0	3.0	4.0	5.0
ALTITUDE	1290	1590'	1890'	2190'	2490'	2790'	3100'	3400'	3700'



Flight Simulator-OPS		Gnd speed-Kts	80	100	120	140	160	180
LLZ/DME DA(H) 1310' (400')		LLZ 2.84° or Descent Gradient 5.0%	400	500	600	700	800	900
MAP at VKW06, 2.5 DME KSL								
A								
B								
C								
D	RVR 1500m							

CHANGES: Communication, CTR added, Layout

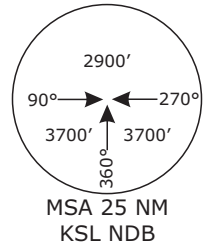
EDVK/KSF KASSEL-CALDEN

APP CHART NO.7

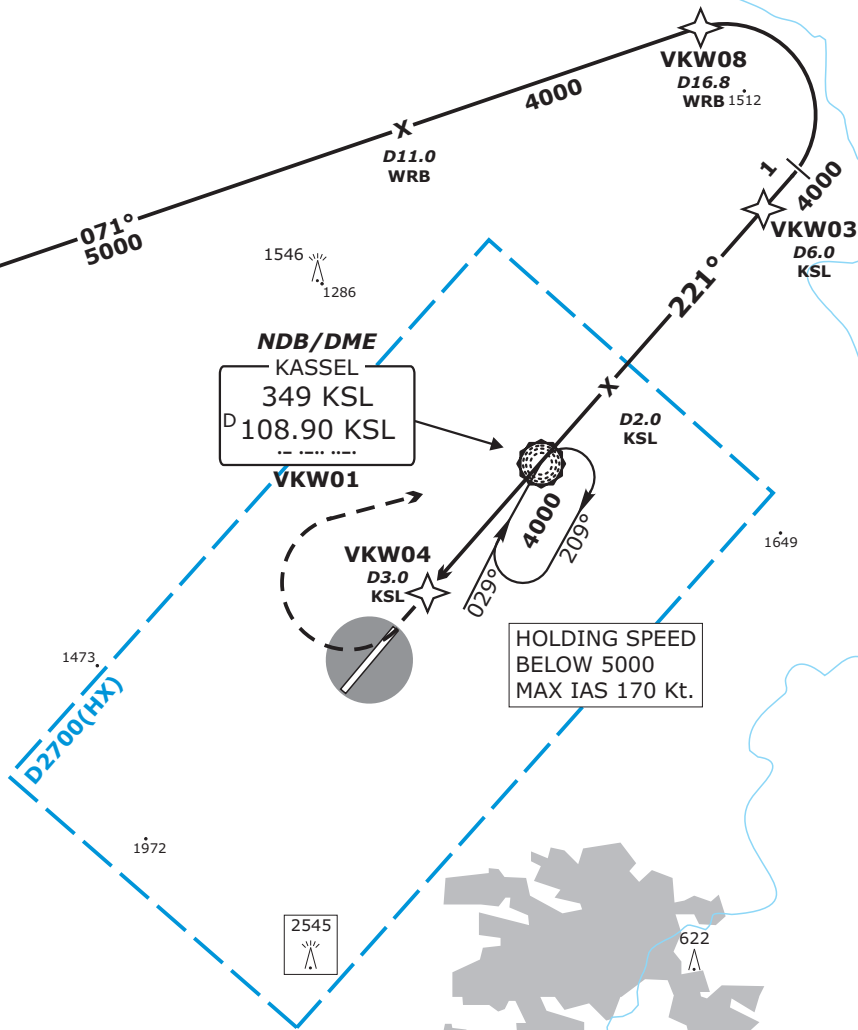
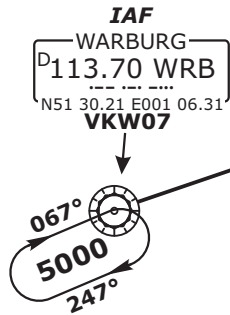
KASSEL, GERMANY
NDB/DME No.2 RWY 22
ACFT CAT A & B

Valid for flight simulation use only - do not use for real life navigation

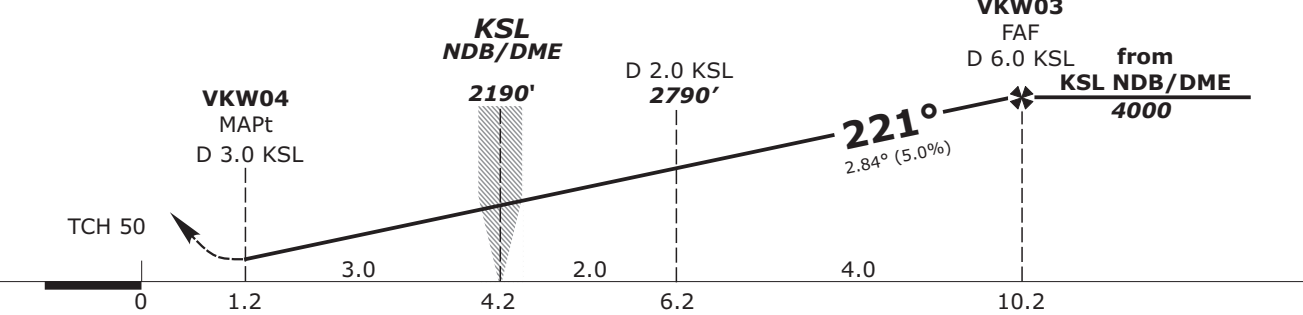
BREMEN Radar 123.92		KASSEL Tower 118.10		
	Final Apch Crs 221°	KSL 2190' (1282')	DA(H) Refer to Minimums	Apt Elev 908'
MISSED APCH: RT to KSL NDB (VKW01) not later than 4.0 DME KSL, climbing to 4000'. During turn max IAS 160 kt.				
Alt Set: hPa (IN on req)		Trans level: By ATC		Trans alt: 5000'



BEARINGS ARE MAGNETIC
ALTITUDES, ELEVATIONS
AND HEIGHTS IN ft



KSL DME	3.0	2.0	1.0	0.0	1.0	2.0	3.0	4.0	5.0
ALTITUDE	1290	1590'	1890'	2190'	2490'	2790'	3100'	3400'	3700'



Flight Simulator-OPS		Gnd speed-Kts	80	100	120	140
LLZ/DME DA(H) 1310' (400')		LLZ 2.84° or Descent Gradient 5.0%	400	500	600	700
RVR 1500m		MAP at VKW04, 3.0 DME KSL				
A						
B						
C						
D						

CHANGES: Communication, CTR added, Layout

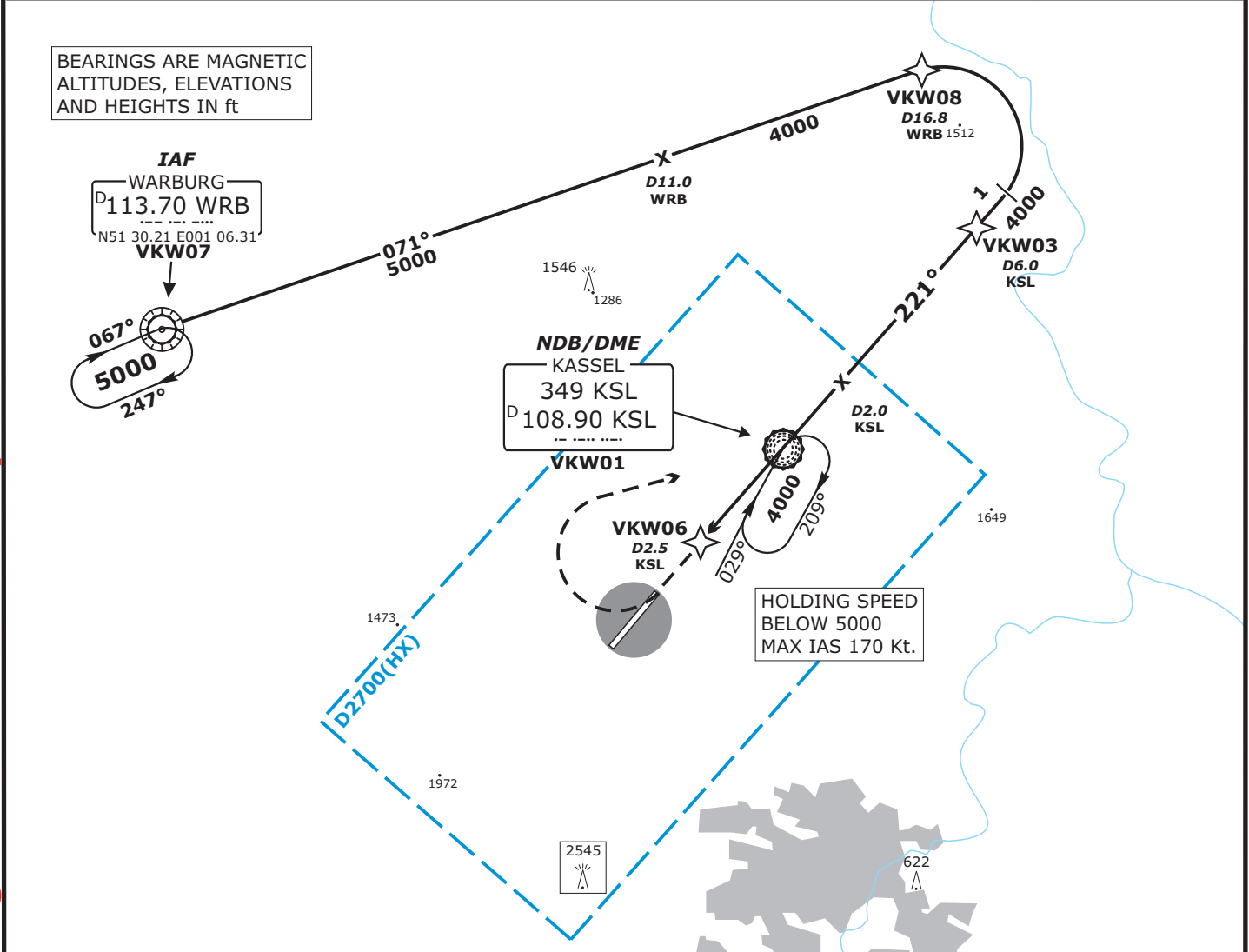
EDVK/KSF KASSEL-CALDEN

APP CHART NO.8

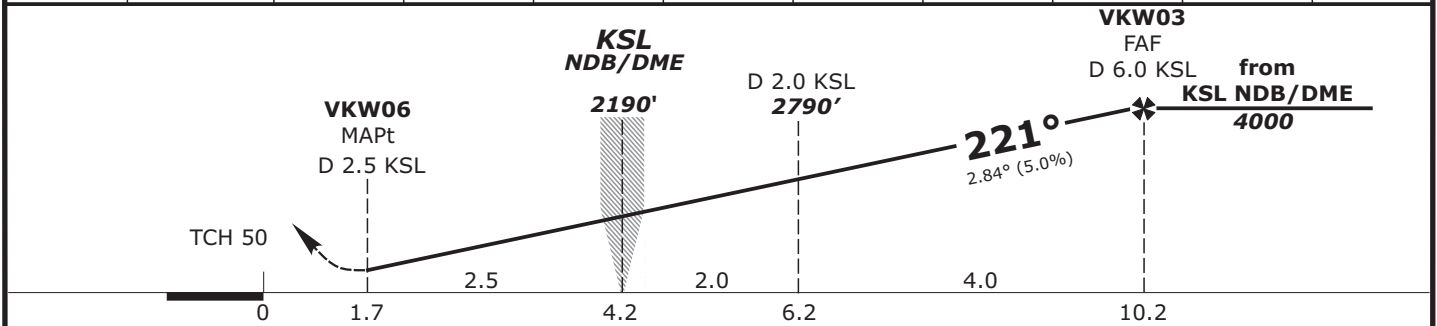
KASSEL, GERMANY
NDB/DME No.2 RWY 22
ACFT CAT C & D

Valid for flight simulation use only - do not use for real life navigation

BREMEN Radar 123.92		KASSEL Tower 118.10			<p>MSA 25 NM KSL NDB</p>
	Final Apch Crs 221°	KSL 2190' (1282')	DA(H) Refer to Minimums	Apt Elev 908'	
MISSED APCH: RT to KSL NDB (VKW01) not later than 3.5 DME KSL, climbing to 4000'. During turn max IAS 185 kt.					
Alt Set: hPa (IN on req)		Trans level: By ATC		Trans alt: 5000'	



KSL DME	3.0	2.0	1.0	0.0	1.0	2.0	3.0	4.0	5.0
ALTITUDE	1290	1590'	1890'	2190'	2490'	2790'	3100'	3400'	3700'



Flight Simulator-OPS		Gnd speed-Kts	80	100	120	140	160	180
LLZ/DME DA(H) 1310' (400')		LLZ 2.84° or Descent Gradient 5.0%	400	500	600	700	800	900
RVR 1500m		MAP at VKW06, 2.5 DME KSL						
A								
B								
C								
D								

CHANGES: Communication, CTR added, Layout

SID

SID CHART

KASSEL, GERMANY RWY 04/22

EDVK KASSEL-CALDEN

KASSEL Tower
118.000

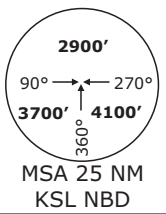
BREMEN Radar
123.920

Apt Elev
908'

Alt Set: hPa (IN on request)

Trans level: by ATC

Trans alt: 5000'



BEARINGS AND TRACKS
ARE MAGNETIC
ALTITUDES IN FEET MSL

ROBEG 5N
After TOLTA BRNAV
equipment necessary

INITIAL CLIMB CLEARANCE
5000 ft

Valid for flight simulation use only - do not use for real life navigation

ROBEG
N52 14.01
E009 16.11

LEINE
D115.20 DLE
N52 15.01 E009 53.11

NORTA
N51 52.07
E009 48.35

TOLTA
N51 41.14
E009 30.45
D14.0 KSL

WARBURG
D113.70 WRB
N51 30.21 E009 06.39

KASSEL
349 KSL
N51 27.53 E009 27.27

DME
KASSEL
D108.90 KSL
N51 27.54 E009 27.26

WERRA
N51 28.12
E009 44.03
D23.0 WRB

1 Departures via ELNAT
pass KSL at **2470**

ELNAT
N51 12.16
E009 41.28

CHANGES: LAU withdrawn, ELNAT established.

Initial climb clearance 5000'

RWY 04

SID	ROUTING	GPS/FMS RNAV
ELNAT 1N	ELNAT ONE NOVEMBER - Direct to KSL NDB, cross KSL NDB at 2470 or above; RT, on track 157° to ELNAT. <i>1. After passing 4800ft BRNAV equipment necessary. 2. Climb with 377ft/NM (6.2%) until passing 4800ft.</i>	[A1300+] - <u>KSL</u> [A2470+; R] - VK221 - ELNAT.
NORTA 5N	NORTA FIVE NOVEMBER - Direct to KSL NDB; LT, on track 008° KSL to 14.4 DME KSL; RT, on R049 WRB to NORTA.	[A1300+] - KSL[L] - VK220[R] - NORTA.
ROBEG 5N	ROBEG FIVE NOVEMBER - Direct to KSL NDB; LT, on track 008° KSL to TOLTA; LT, on track 344° to ROBEG. <i>After TOLTA BRNAV equipment necessary.</i>	[A1300+] - KSL[L] - TOLTA[L] - ROBEG.
WERRA 4N	WERRA FOUR NOVEMBER - Climb on track 040° via KSL to intercept R094 WRB; on R094 WRB to WERRA.	[A1300+] - <u>KSL</u> - VK222[R] - WERRA.
WRB 5N	WARBURG FIVE NOVEMBER - Direct to KSL NDB; LT, on R087 WRB to WRB.	[A1300+] - <u>KSL</u> [L] - VK223 - WRB.

(Sample: KSL fly-over way point)

RWY 22

WRB 3K	WARBURG THREE KILO - SID for RWY 22 available on PPR basis only.	
---------------	---	--

Contact BREMEN RADAR immediately after take-off!

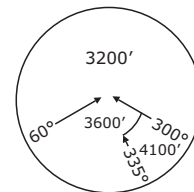
Valid for flight simulation use only - do not use for real life navigation

KASSEL Tower
118.100

BREMEN Radar
123.920

Apt Elev
908'

Alt Set: hPa (IN on request)
Trans level: by ATC
Trans alt: 5000'



MSA 25NM
KSL NDB

BEARINGS AND TRACKS
ARE MAGNETIC.
ALTITUDES IN FEET MSL.

LEINE
D 115.20 DLE
N52 15.01 E009 53.01

HEHLINGEN
D 117.30 HLZ
N52.21.48 E010 47.43

ROBEG
N 52 14.01
E009 16.11

ROBEG 5A
<34> 163° 5000

NORTA
N51 52.07
E009 48.35
D23.0 DLE
D34.0 WRB
D47.0 HLZ

NORTA 4A
<28> 207° 5000

IAF
by ATC only
WARBURG

D 113.70 WRB
N51 30.21 E009 06.31

TOLTA
N51 41.14
E009 30.45
D14.0 KSL

<14> 188°
5000

Between ROBEG and TOLTA
BRNAV equipment necessary.

IAF
KASSEL
349 KSL

N51 27.53 E009 27.27

WRB 4B
<13> 099° 5000



DME
KASSEL
D 108.90 KSL
N51 27.54 E009 27.26

ELNAT 1A
<18> 330° 5000

ELNAT
N51 12.16
E009 41.28

SPEED RESTRICTION
MAX 250 KT below FL100 or as by ATC.
Not applicable within airspace C.

Valid for flight simulation use only - do not use for real life navigation