

DESIGNATOR	ROUTE	After Take-Off		Remarks
		climb to	contact	
<b>DIRBO 6U</b>	<b>DIRBO SIX UNIFORM</b> Direct BRU; LT, on R249 HLZ to 2.3 DME HLZ; LT on R324 HLZ to 17.0 DME HLZ; RT on R044 DLE to DIRBO.  <b>GPS/FMS RNAV:</b> [A700+] - BRU[L] - <u>VE084</u> [L] - VE085 - VE086[R] - DIRBO.	4000 ft	Bremen Radar 131.325	
<b>BATEL 4U</b>	<b>BATEL FOUR UNIFORM</b> Direct BRU; LT, on R249 HLZ to HLZ; LT on R044 HLZ to BATEL.  <b>GPS/FMS RNAV:</b> [A700+] - BRU[L] - HLZ[L] - BATEL.			Only for flights with destination EDDB, EDDT or EDDI.
<b>HLZ 6U</b>	<b>HEHLINGEN SIX UNIFORM</b> Direct BRU; LT, on R249 HLZ to HLZ.  <b>GPS/FMS RNAV:</b> [A700+] - BRU[L] - HLZ.			No access to UL980.
<b>POVEL 4U</b>	<b>POVEL FOUR UNIFORM</b> Direct BRU; LT, on R249 HLZ to 2.3 DME HLZ; RT, on R174 HLZ to POVEL.  <b>GPS/FMS RNAV:</b> [A700+] - BRU[L] - <u>VE084</u> [R] - VE087 - POVEL.			
<b>NORTA 5U</b>	<b>NORTA FIVE UNIFORM</b> Direct BRU; cross BRU () at 700 or above; RT, on R230 HLZ to NORTA.  <b>GPS/FMS RNAV:</b> [A700+] - <u>BRU</u> [R] - VE081 - NORTA.			
<b>DLE 6U</b>	<b>LEINE SIX UNIFORM</b> Direct BRU; cross BRU at 700 or above; LT, on R074 DLE to DLE.  <b>GPS/FMS RNAV:</b> [A700+] - <u>BRU</u> [L] - VE083 - DLE.			
<b>NIE 6U</b>	<b>NIENBURG SIX UNIFORM</b> Direct BRU; cross BRU at 700 or above, LT, on track 301° CEL to CEL; LT, on R094 NIE to NIE.  <b>GPS/FMS RNAV:</b> [A700+] - <u>BRU</u> [L] - VE082 - CEL[L] - NIE.			

(Sample: VE084 fly-over way point.)

Contact Bremen Radar immediately after take-off!

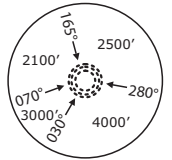
Do not use for real life navigation

Tower 120.050

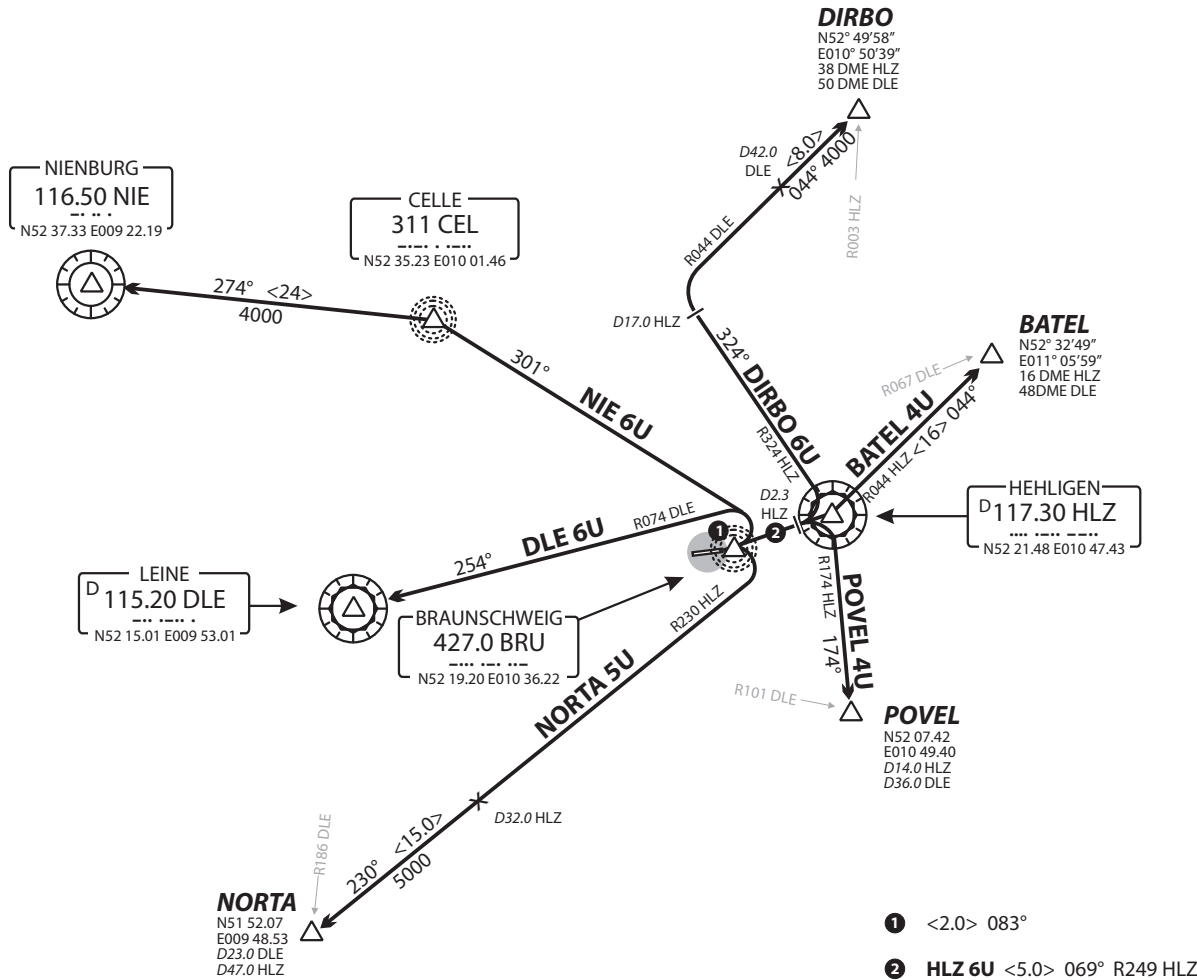
Bremen Radar 131.325

Transition altitude 5000

BEARINGS AND TRACKS  
ARE MAGNETIC  
ALTITUDES IN FT MSL



**Do not use for real life navigation**



Contact Bremen Radar immediately after take-off!