
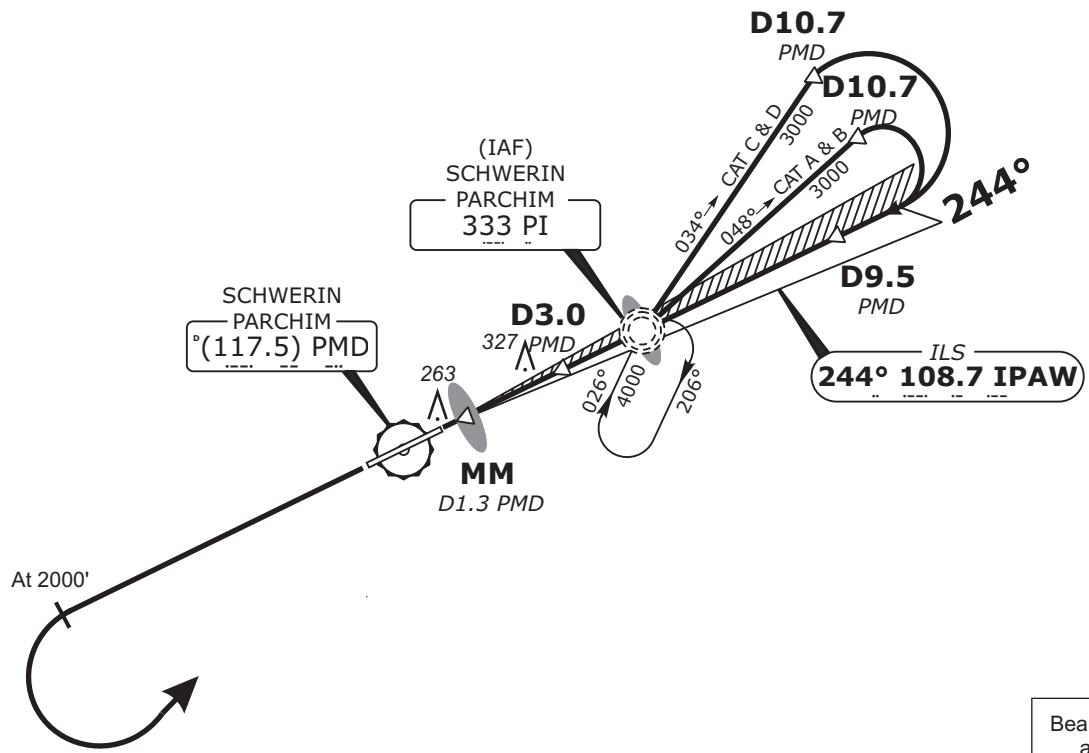
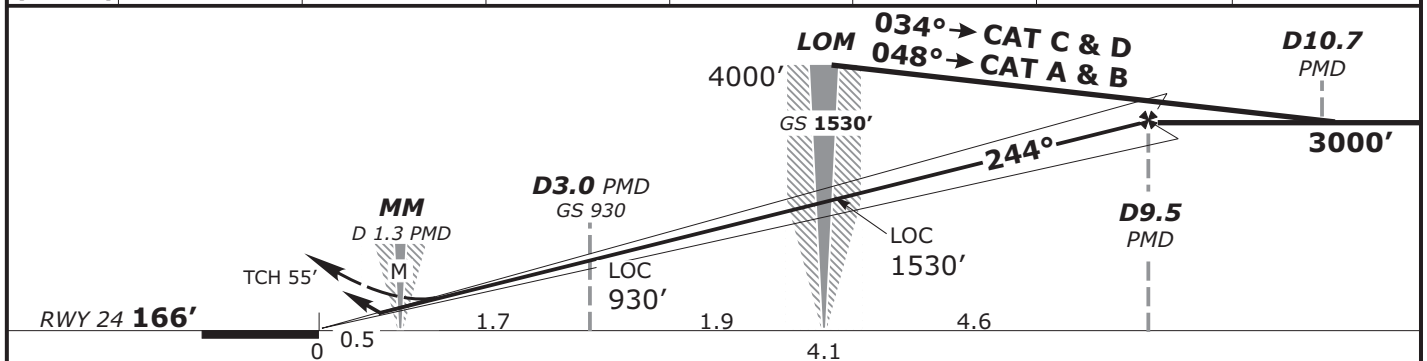


Bremen Radar 124.170 123.220 125.020		Schwerin Tower 128.900		Transition Altitude 5000' Airport Elevation 166' Magnetic Variation 2° E		MSA 25 NM from PI NDB 2400	
LOC IPAW 108.70	Final Apch Crs 244°	GS OM 1530' (1464')	ILS DA(H) Refer to Minimums		RWY 24 166'		
MISSED APCH: Climb straight ahead until passing 2000', left turn to PI NDB climbing to 4000'.							

LOC: DME REQUIRED



LOC (GS out)	PMD DME	4.0	5.0	6.0	7.0	8.0	9.0
	ALTITUDE	1240'	1560'	1880'	2200'	2520'	2840'



Gnd speed-Kts	70	90	100	120	140	160	HIALS PAPI 2000'
ILS GS 3.00° or LOC Descent Gradient 5.2%	377	485	539	647	755	862	
MAP at MM/D1.3 PMD							

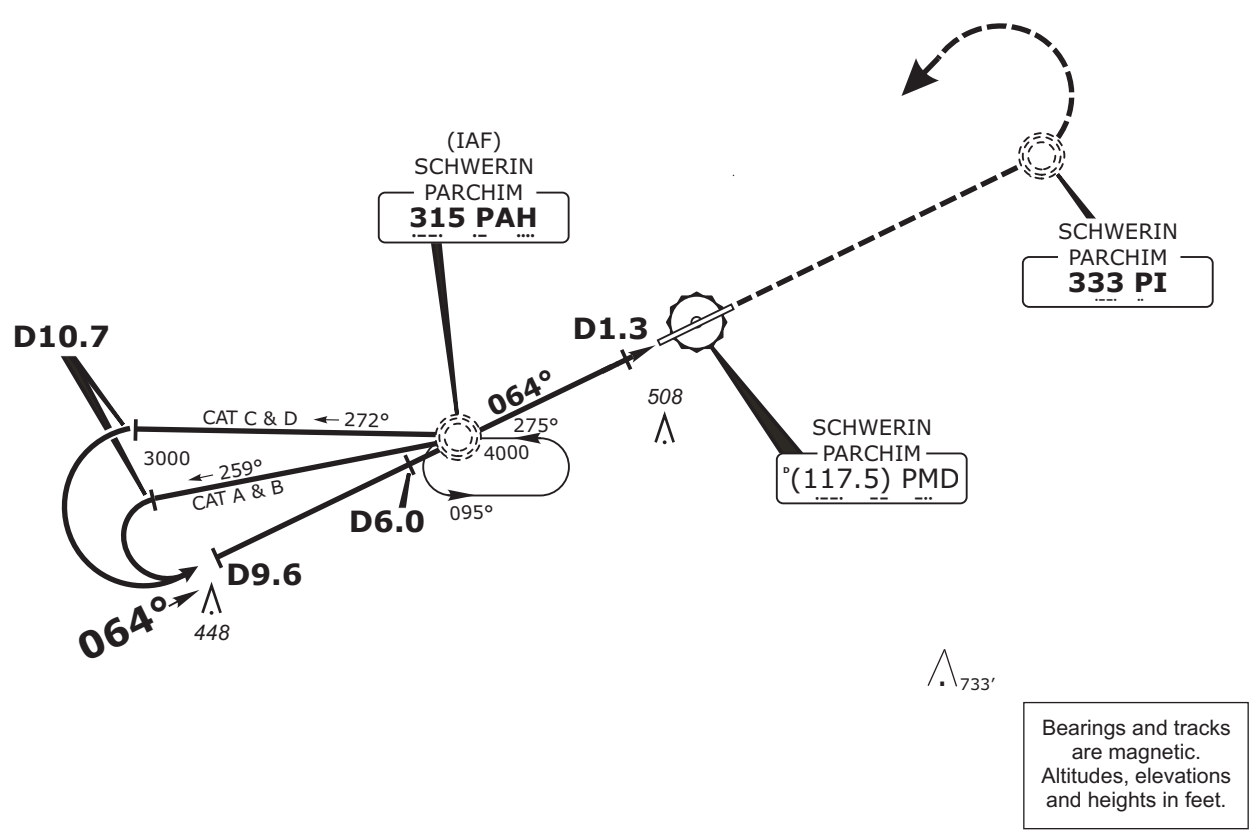
FS-OPS		ILS I STRAIGHT-IN LANDING RWY 24	
DA(H) A: 395'(229') C: 415'(249') B: 405'(239') D: 425'(259')		LOC (GS out) MDA(H) 580'(410')	
FULL		ALS out	
A		RVR 900m	RVR 1500m
B	RVR 600m	RVR 1000m	RVR 1800m
C		RVR 1400m	RVR 2000m
D			

LACFT: DA(H) 408'(242').

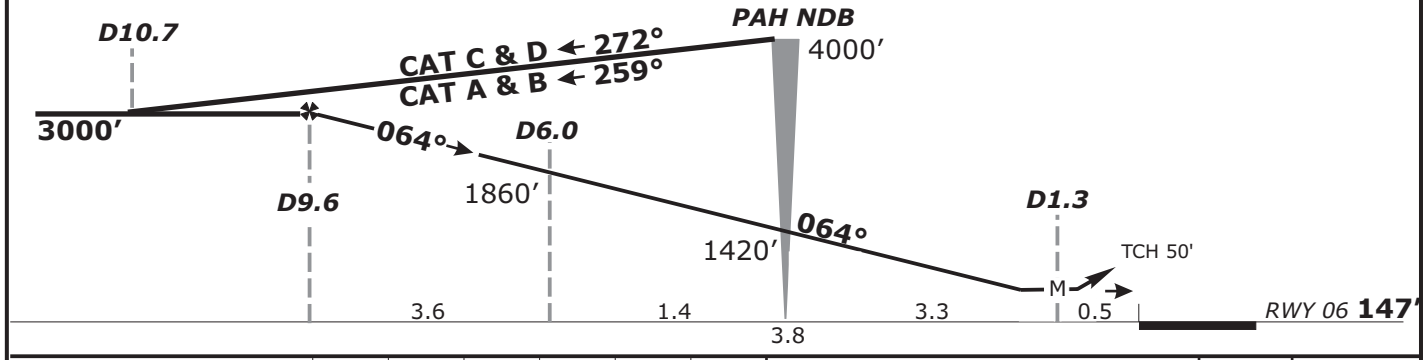
Valid for flight simulation use only - do not use for real life navigation

Bremen Radar 124.170 123.220 125.020		Schwerin Tower 128.900	Transition Altitude 5000' Airport Elevation 166' Magnetic Variation 2° E	MSA 25 NM from PI NDB 2400
NDB PAH 315.0	Final Apch Crs 064°	NDB DA(H) Refer to Minimums RWY 06 147'		
MISSED APCH: Climb straight ahead to PI NDB, left turn to PAH NDB climbing to 4000'.				

DME REQUIRED



PMD DME	9.0	8.0	7.0	6.0	5.0	4.0	3.0
ALTITUDE	2810'	2490'	2180'	1860'	1540'	1220'	900'



Gnd speed-Kts	70	90	100	120	140	160	PI 333 ↑
LOC Descent Gradient 5.2%	369	474	527	632	737	843	
MAP at D1.3							

FS-OPS		STRAIGHT-IN LANDING RWY 06	
MDA(H) 630'(480')		ALS out	
A	RVR 1400m		
B	RVR 1500m		
C	RVR 1600m		
D	RVR 1800m		

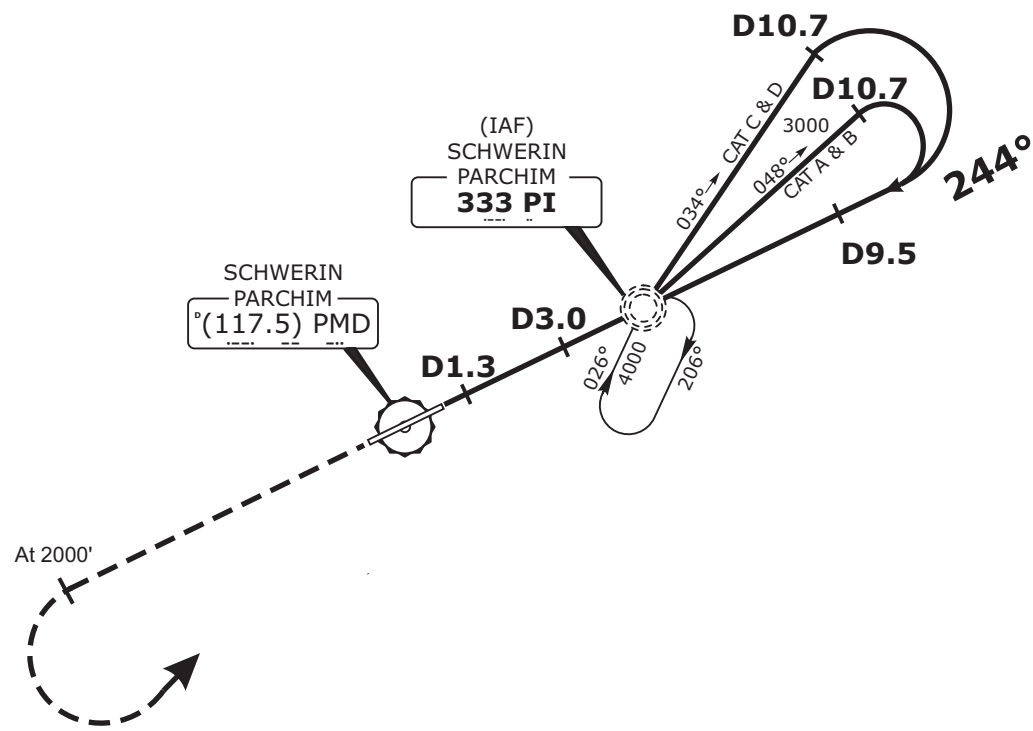
Valid for flight simulation use only - do not use for real life navigation

Revision: 2010-06-01. Changes: comm. frequencies.

Bremen Radar 124.170 123.220 125.020		Schwerin Tower 128.900	Transition Altitude 5000' Airport Elevation 166' Magnetic Variation 2° E	MSA 25 NM from PI NDB 2400
NDB PI 333.0	Final Apch Crs 244°	NDB DA(H) Refer to Minimums RWY 24 166'		

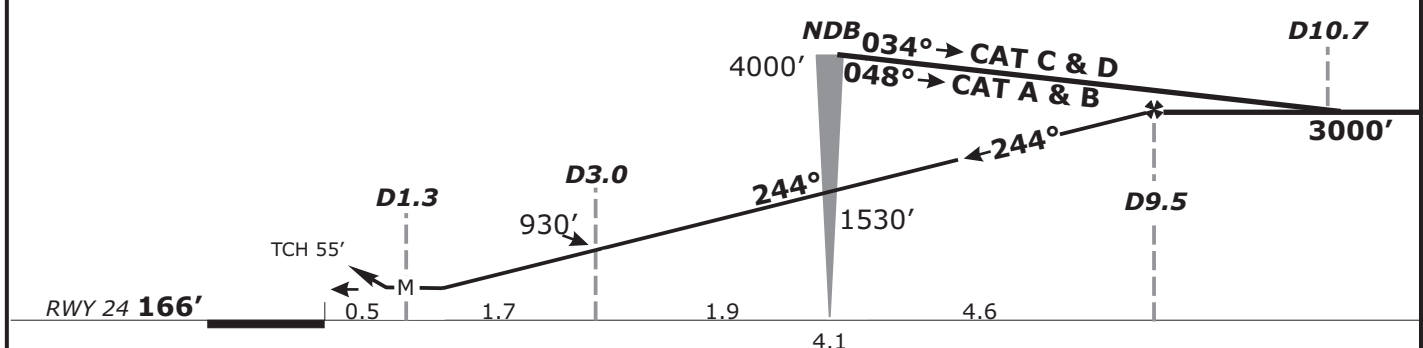
MISSED APCH: Climb straight ahead until passing 2000', left turn to PI NDB climbing to 4000'.

DME REQUIRED



Bearings and tracks are magnetic.
Altitudes, elevations and heights in feet.

PMD DME	3.0	4.0	5.0	6.0	7.0	8.0	9.0
ALTITUDE	930'	1240'	1560'	1880'	2200'	2520'	2840'



Gnd speed-Kts	70	90	100	120	140	160	HIALS PAPI	2000' ↑
LOC Descent Gradient 5.2%	369	474	527	632	737	843		

MAP at D1.3

FS-OPS		STRAIGHT-IN LANDING RWY 24	
		MDA(H) 610'(450')	
		ALS out	
A	RVR 1000m		
B	RVR 1200m	RVR 1500m	
C	RVR 1600m	RVR 2000m	
D	RVR 1600m		

Revision: 2010-06-01. Changes: comm. frequencies.

Valid for flight simulation use only - do not use for real life navigation