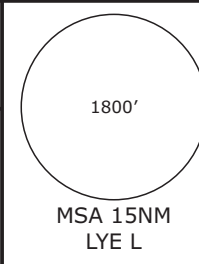


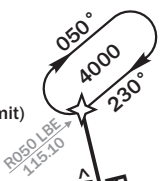
ATIS
119.920

BREMEN RADAR
127.670

TRANS ALT
5000'



BOGMU
(Clearance Limit)
N 53 58.45
E010 17.20
D31.0 LBE



BOGMU 07
<5.1> 164° 4000

HL224
IAS 220 KT

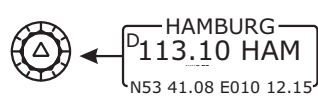
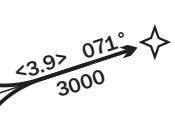
REMARK
1. USE OF TRANSITIONS PROCEDURE ONLY WHEN CLEARED BY ATC.
2. SPEED RESTRICTIONS ON TRANSITION ALWAYS MANDANTORY, UNLESS CANCELLED BY ATC.

HL225
IAS 220 KT

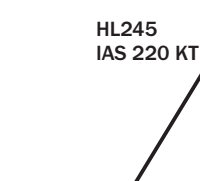


(FAF)
BITNA
IAS 170 KT
3000

HL265



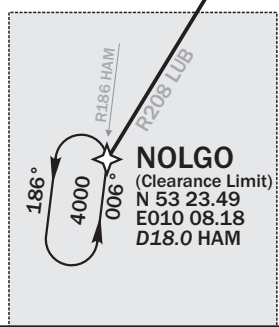
HL245
IAS 220 KT



RARUP 07
<9.9> 273° 4000



RARUP
N 53 38.30
E010 40.37
D17.0 HAM



NOLGO 07
<18.2> 029° 4000

Do not use for real life navigation

Revision: 2012-03-23 - CHANGES: Tracks, radials, BITNA position.