

DESIGNATOR	ROUTE	After Take-Off		Remarks
		climb to	contact	
LUB 4K	<b>LUBECK FOUR KILO</b> Direct LYE, on track 250° to 3.5 DME ILUE; RT, on R208 LUB to LUB.  GPS/FMS RNAV: [A500+] - <u>HL021</u> [L] - HL022 - LUB	5000 ft	Bremen Radar 127.670	
RAMAR 4H	<b>RAMAR FOUR HOTEL</b> Direct LYE, on track 250° to 5.5 DME ILUE; LT, on R085 HAM to RAMAR.  GPS/FMS RNAV: [A500+] - <u>HL023</u> [L] - HL024 - RAMAR.			
HAM 5H	<b>HAMBURG FIVE HOTEL</b> Direct LYE, on track 250° to 3.5 DME ILUE; LT, on R066 HAM to HAM.  GPS/FMS RNAV: [A500+] - <u>HL021</u> [R] - HAM.			

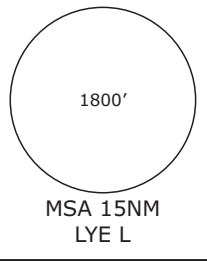
(Sample: HI021 fly-over way point.)

Contact Bremen Radar immediately after take-off!

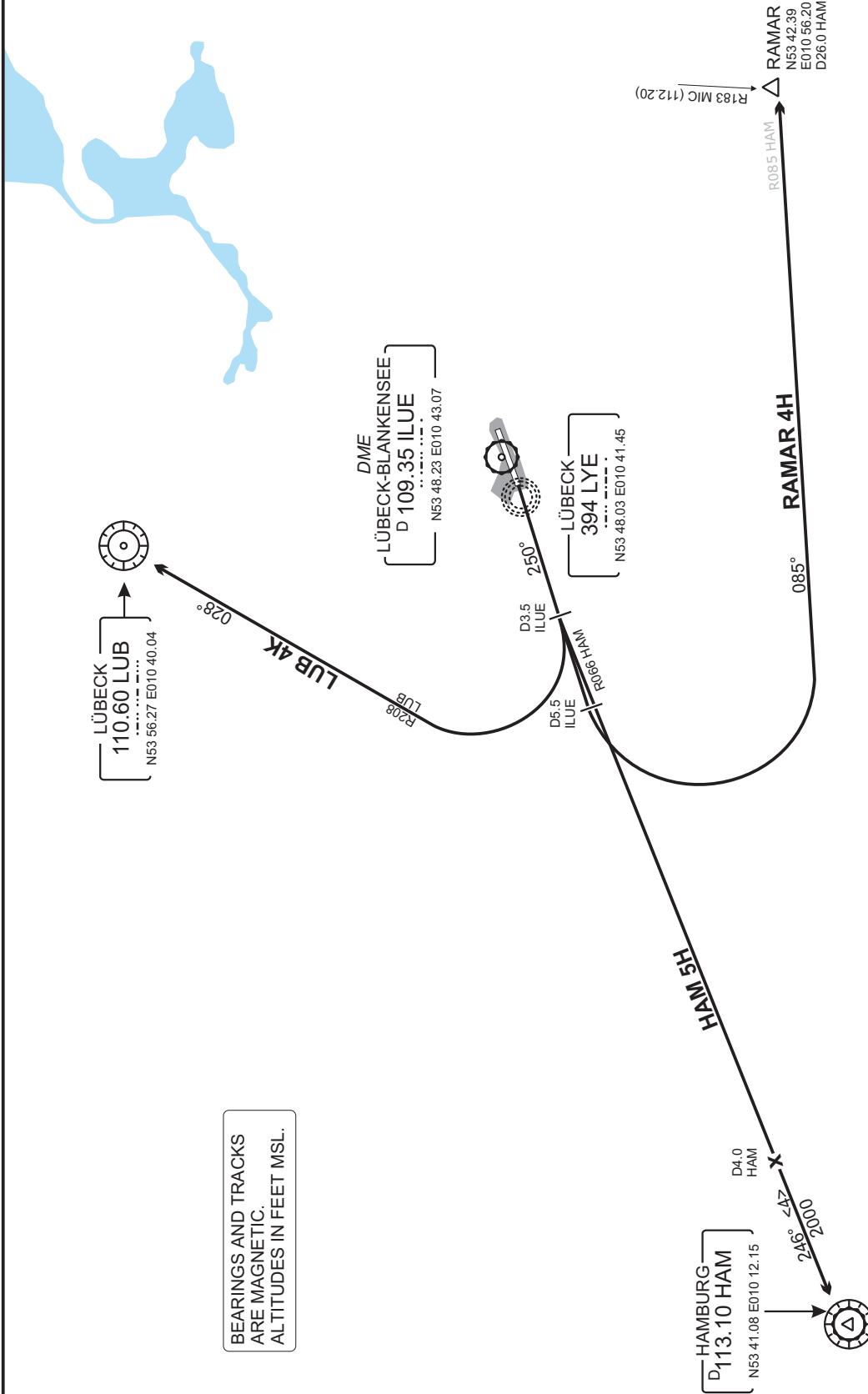
Do not use for real life navigation

ATIS 119.920 LÜBECK GROUND 121.770 BREMEN RADAR 127.670  
LÜBECK TOWER 120.170

TRANS. ALT  
5000'



Do not use for real life navigation



BEARINGS AND TRACKS  
ARE MAGNETIC.  
ALTITUDES IN FEET MSL.