

DESIGNATOR	ROUTE	After Take-Off		Remarks
		climb to	contact	
LUB 4J	<b>LUBECK FOUR JULIETT 5000 ft</b> On track 070° LYE to 3.5 DME ILUE; LT, on R121 LUB to LUB.  GPS/FMS RNAV: [A500+] - <u>HL011</u> [L] - HL012 - LUB	5000 ft	Bremen Radar 127.670	
RAMAR 4J	<b>RAMAR FOUR JULIETT</b> On track 070° LYE to 5.3 DME ILUE; RT, on R182 MIC to RAMAR.  GPS/FMS RNAV: [A500+] - <u>HL013</u> [L] - HL014 - RAMAR.			
HAM 5J	<b>HAMBURG FIVE JULIETT</b> On track 070° LYE to 5.3 DME ILUE; RT, on R078 HAM to HAM.  GPS/FMS RNAV: [A500+] - <u>HL013</u> [R] - HL015 - HAM.			

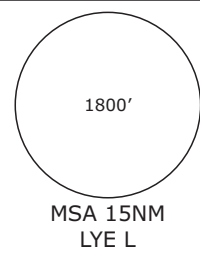
(Sample: HL011 fly-over way point.)

Contact Bremen Radar immediately after take-off!

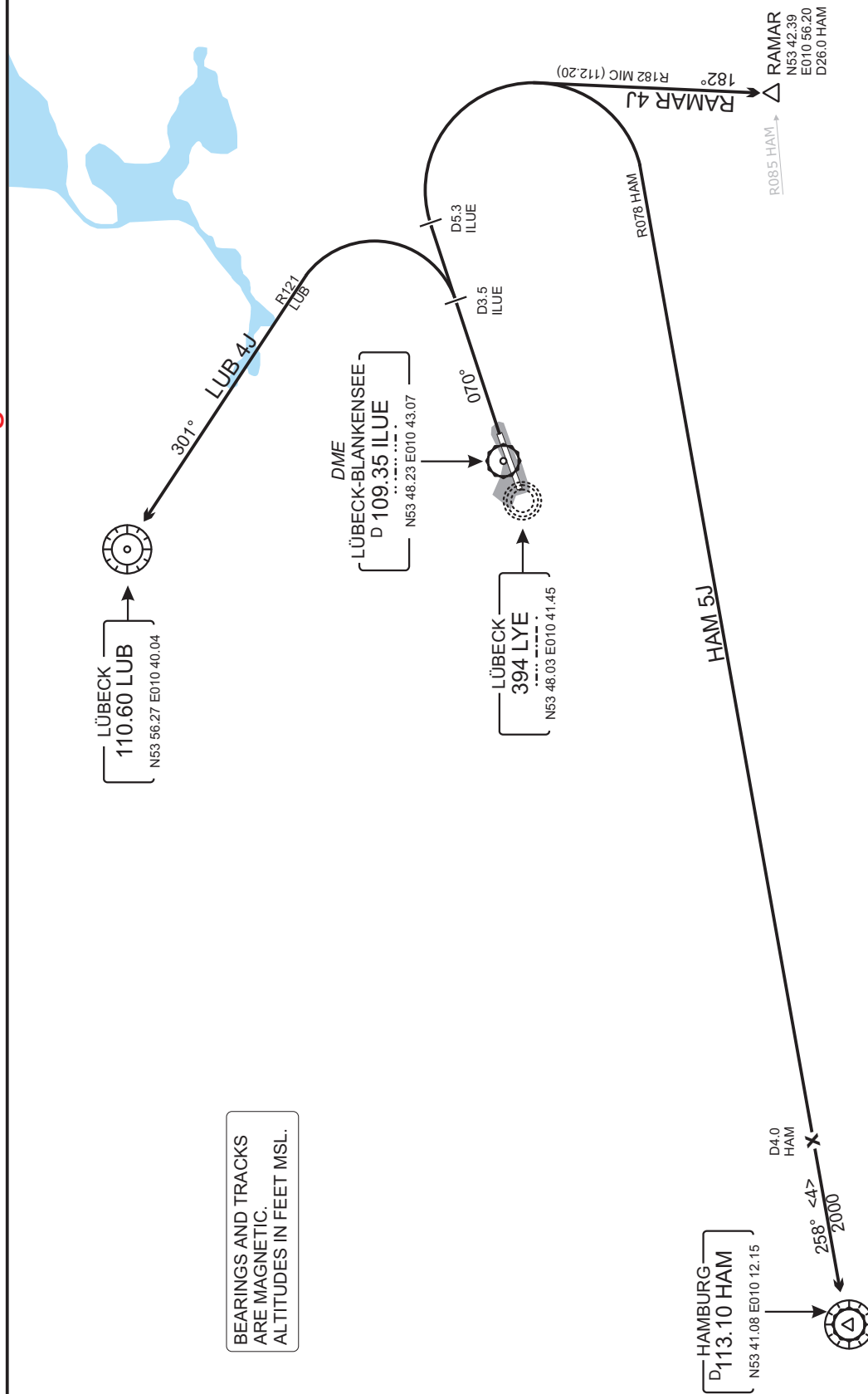
Do not use for real life navigation

ATIS 119.920 LÜBECK GROUND 121.770 BREMEN RADAR 127.670  
LÜBECK TOWER 120.170

TRANS. ALT  
5000'



Do not use for real life navigation



BEARINGS AND TRACKS  
ARE MAGNETIC.  
ALTITUDES IN FEET MSL.