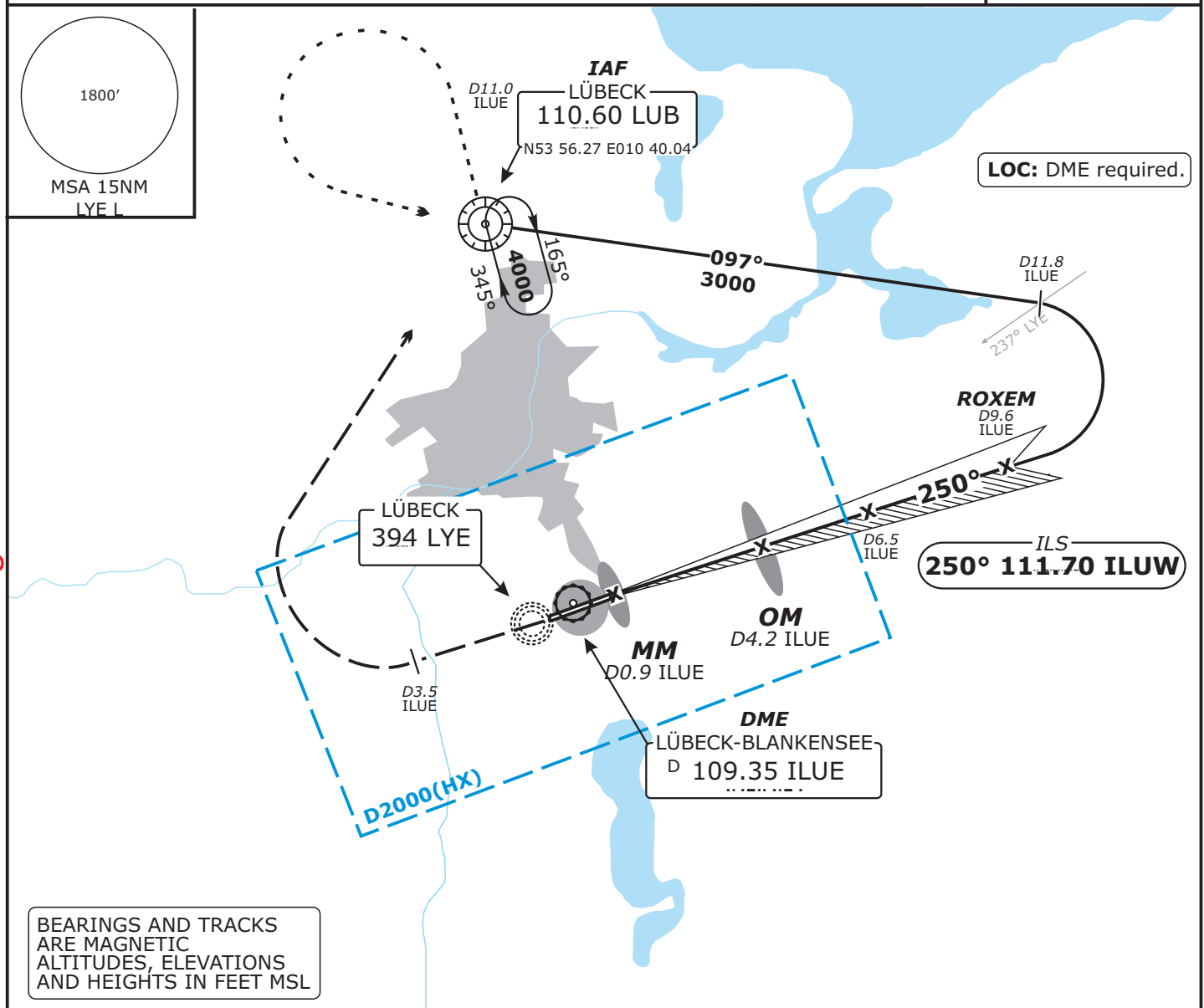


Eff: 08 MAR 12

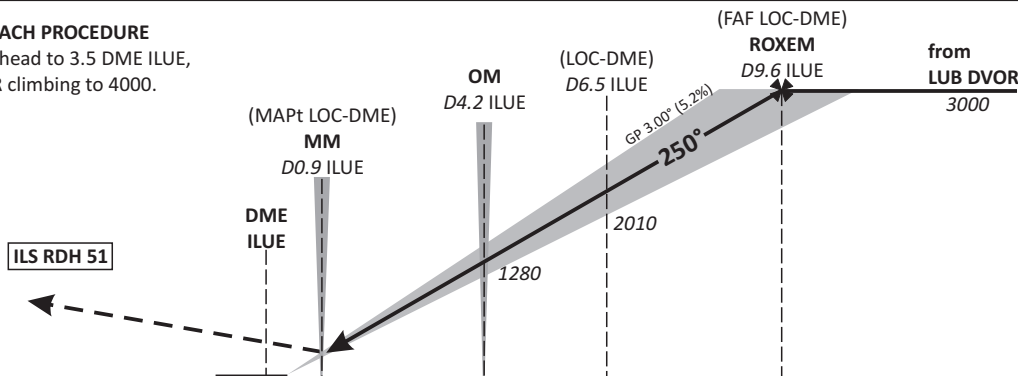
ATIS 119.920	BREMEN RADAR 127.670	LÜBECK TOWER 128.700	LÜBECK GROUND 121.770	Apt. Elev 53'
--------------	----------------------	----------------------	-----------------------	---------------



Do not use for real life navigation

MISSED APPROACH PROCEDURE

Climb straight ahead to 3.5 DME ILUE,
RT to LUB DVOR climbing to 4000.



OCA (OCH)	A	B	C	D
ILS CAT I	273 (225)	283 (235)	293 (245)	303 (255)
LOC-DME	490 (440)	490 (440)	490 (440)	490 (440)

DME ILUE	2	3	4	5	6	7	8	9
DIST THR	1.5	2.5	3.5	4.5	5.5	6.5	7.5	8.5
ALTITUDE	580	900	1220	1540	1860	2170	2490	2810

LOC-DME: Timing not authorized for defining the MAPt.

GS	KT	80	100	120	140	160	180
OM - THR (3.87 NM)	MIN:SEC	2:47	2:13	1:51	1:35	1:23	1:14
Rate of descent (5.2%)	FT / MIN	420	530	640	740	850	960

Revision: 2012-03-23 - CHANGES: Layout., OCA(H)