

Eff: 08 MAR 12

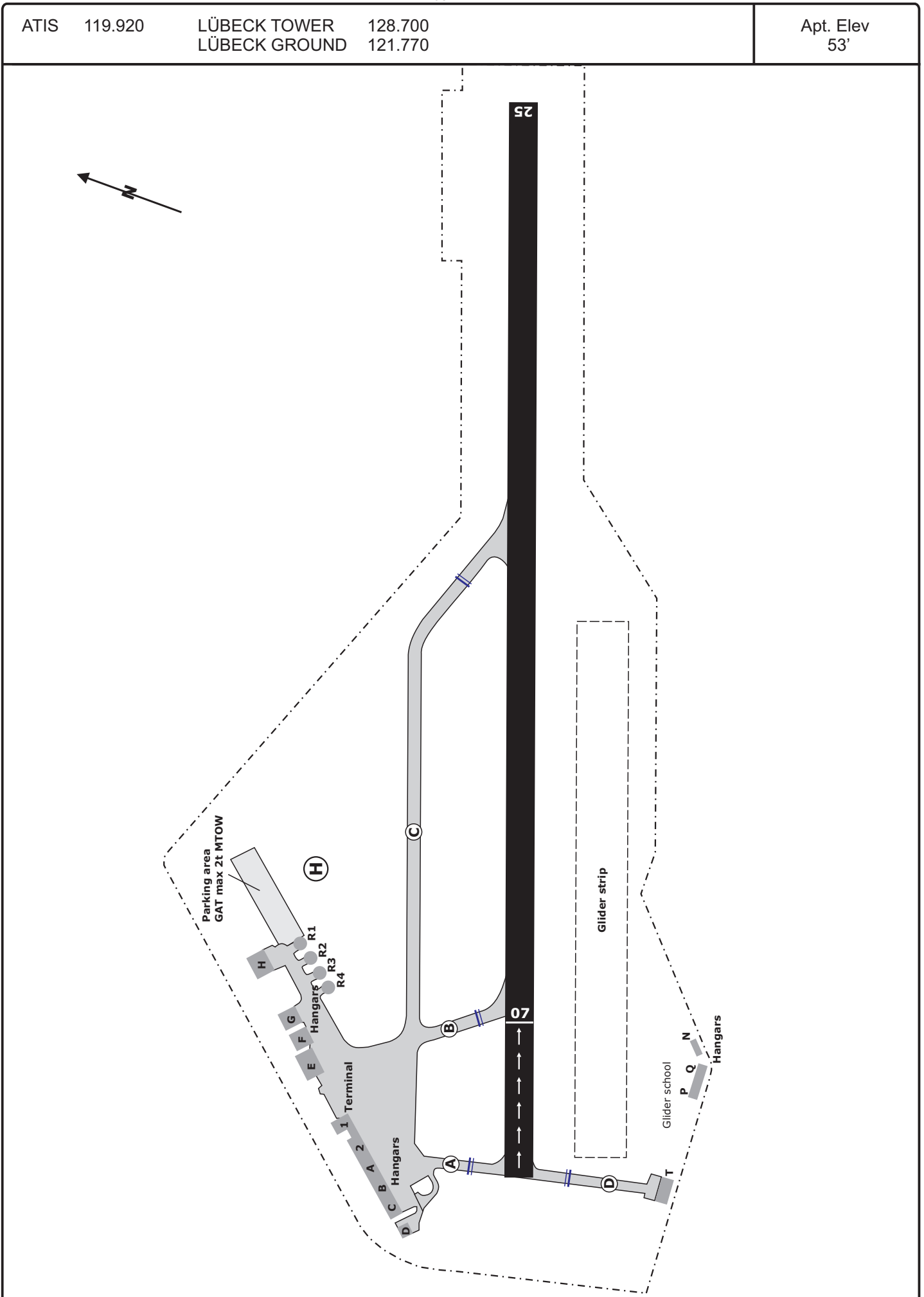
ATIS 119.920

LÜBECK TOWER 128.700
LÜBECK GROUND 121.770

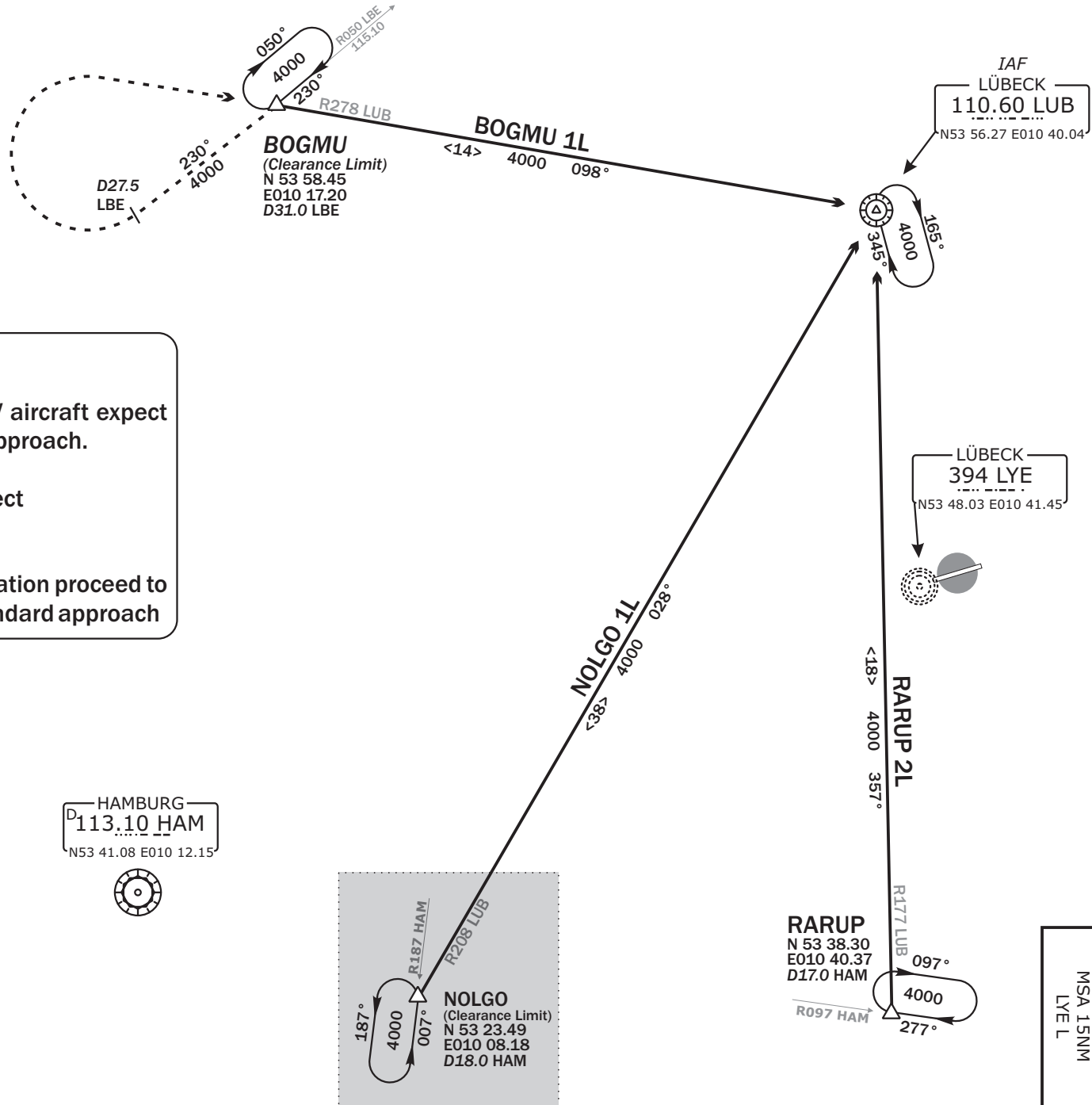
Apt. Elev
53'

Do not use for real life navigation

Revision: 2012-03-23 - CHANGES: Layout.



Do not use for real life navigation



Remark

1. BRNAV and Non-RNAV aircraft expect radar vectors to final approach.
2. GPS/FMS aircraft expect Transition-to-Final.

In case of lost communication proceed to Lübeck VOR (LUB) for standard approach

BEARINGS AND TRACKS ARE MAGNETIC.
ALTITUDES IN FEET MSL.

Lübeck, GERMANY
Lübeck-Blankensee



Eff: 08 MAR 12

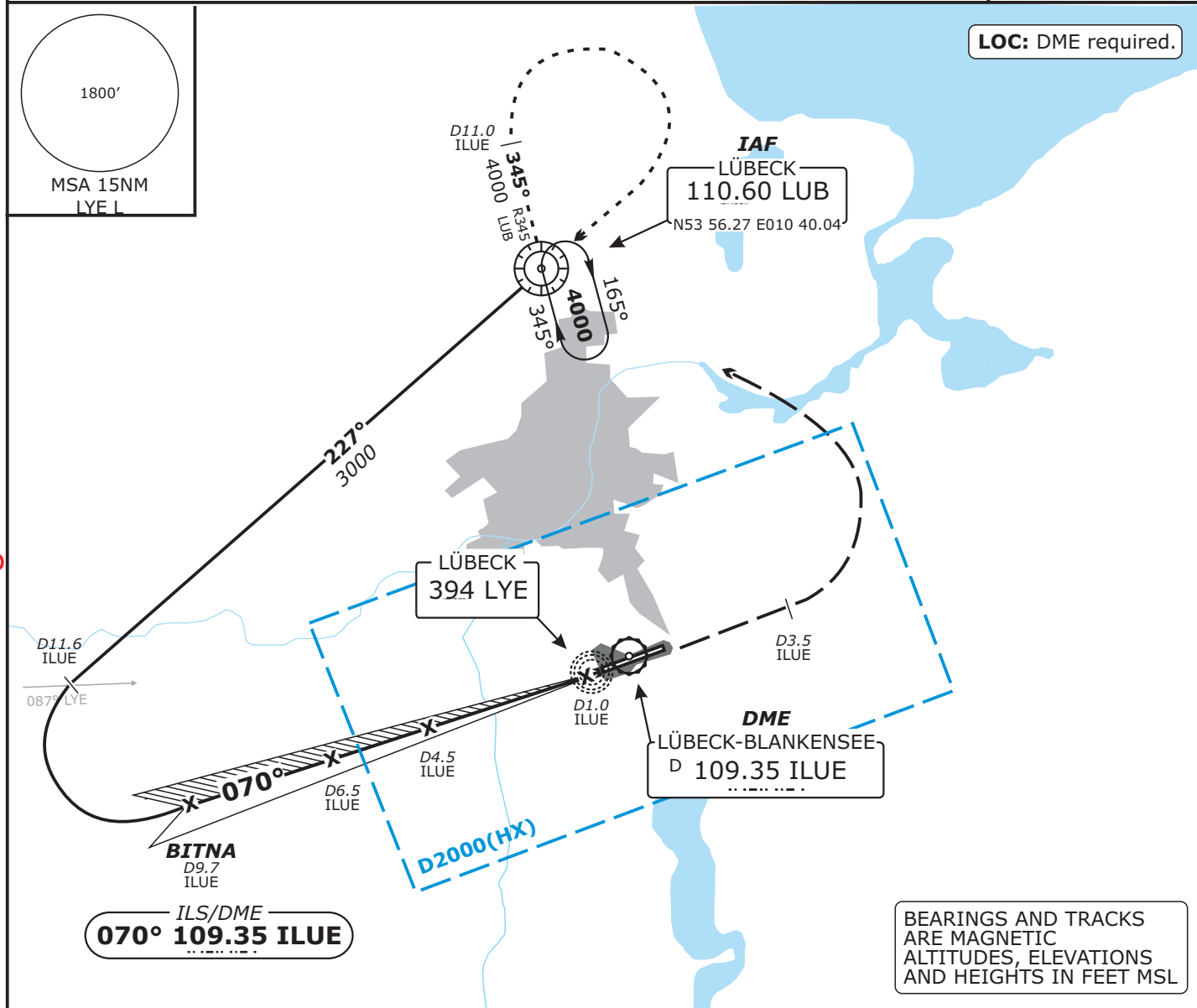
ATIS
119.920

BREMEN RADAR
127.670

TRANS ALT
5000'

LBC/EDHL
STAR RWY 07/25

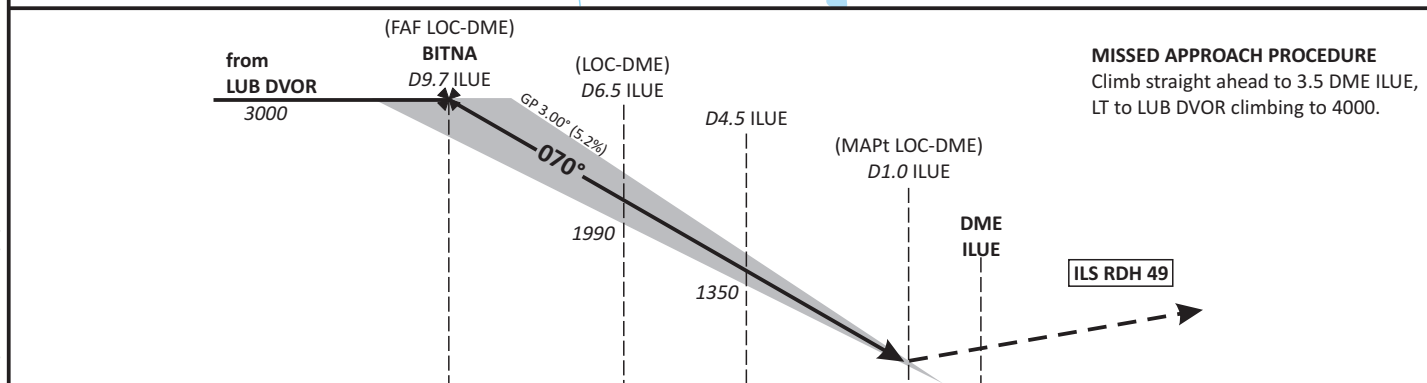
ATIS 119.920	BREMEN RADAR 127.670	LÜBECK TOWER 128.700	LÜBECK GROUND 121.770	Apt. Elev 53'
--------------	----------------------	----------------------	-----------------------	---------------



Do not use for real life navigation

ILS/DME
070° 109.35 ILUE

BEARINGS AND TRACKS
ARE MAGNETIC
ALTITUDES, ELEVATIONS
AND HEIGHTS IN FEET MSL



MISSED APPROACH PROCEDURE
Climb straight ahead to 3.5 DME ILUE,
LT to LUB DVOR climbing to 4000.

OCA (OCH)	A	B	C	D						
ILS/DME CAT I	227 (174)	237 (184)	250 (197)	260 (207)						
LOC-DME	500 (450)	500 (450)	500 (450)	500 (450)						

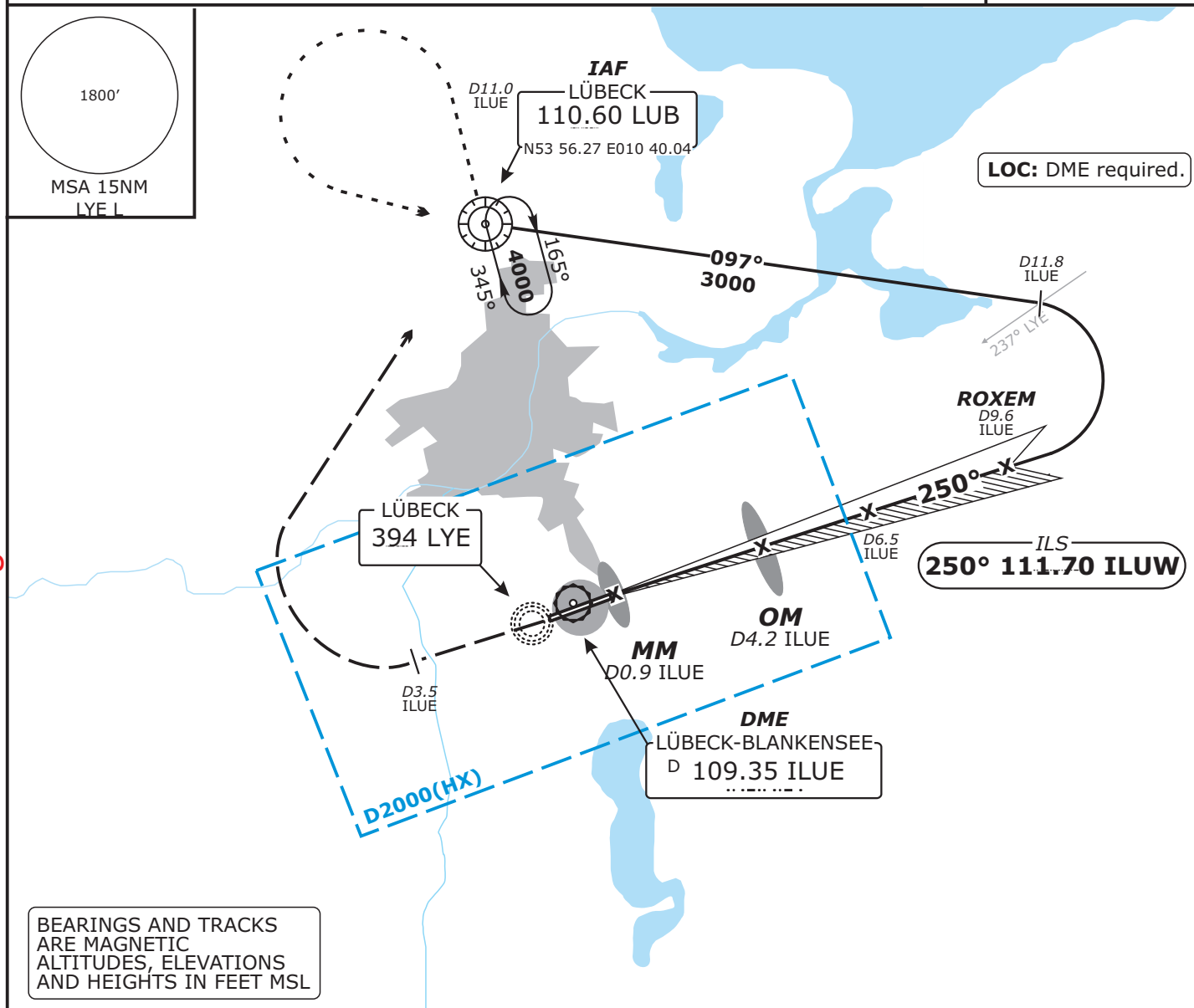
DME ILUE	9	8	7	6	5	4	3	2
DIST THR	8.4	7.4	6.4	5.4	4.4	3.4	2.4	1.4
ALTITUDE	2780	2460	2140	1830	1510	1190	870	550

LOC-DME: Timing not authorized for defining the MAPt.

GS	KT	80	100	120	140	160	180
4.5 DME ILUE - THR (3.9 NM)	MIN:SEC	2:56	2:20	1:57	1:40	1:28	1:18
Rate of descent (5.2%)	FT / MIN	420	530	640	740	850	960

Eff: 08 MAR 12

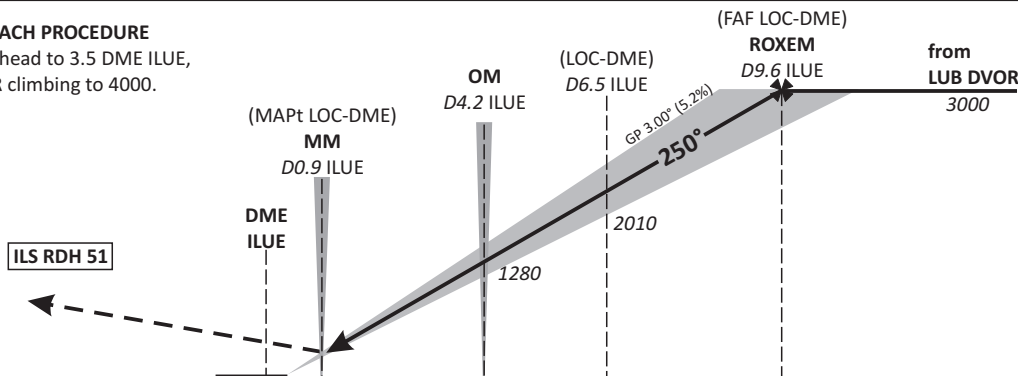
ATIS 119.920	BREMEN RADAR 127.670	LÜBECK TOWER 128.700	LÜBECK GROUND 121.770	Apt. Elev 53'
--------------	----------------------	----------------------	-----------------------	---------------



Do not use for real life navigation

MISSED APPROACH PROCEDURE

Climb straight ahead to 3.5 DME ILUE,
RT to LUB DVOR climbing to 4000.



OCA (OCH)	A	B	C	D
ILS CAT I	273 (225)	283 (235)	293 (245)	303 (255)
LOC-DME	490 (440)	490 (440)	490 (440)	490 (440)

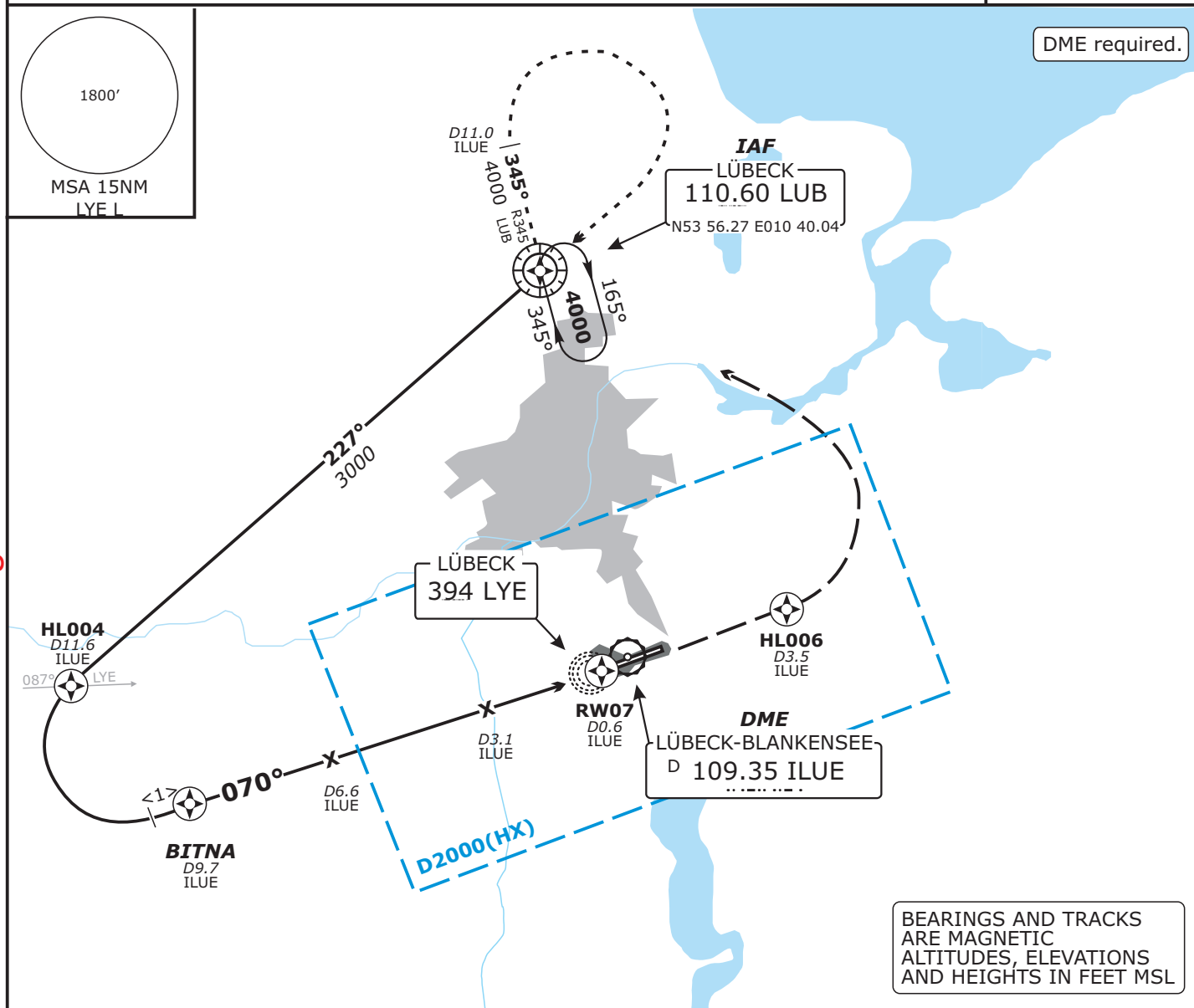
DME ILUE	2	3	4	5	6	7	8	9
DIST THR	1.5	2.5	3.5	4.5	5.5	6.5	7.5	8.5
ALTITUDE	580	900	1220	1540	1860	2170	2490	2810

LOC-DME: Timing not authorized for defining the MAPt.

GS	KT	80	100	120	140	160	180
OM - THR (3.87 NM)	MIN:SEC	2:47	2:13	1:51	1:35	1:23	1:14
Rate of descent (5.2%)	FT / MIN	420	530	640	740	850	960

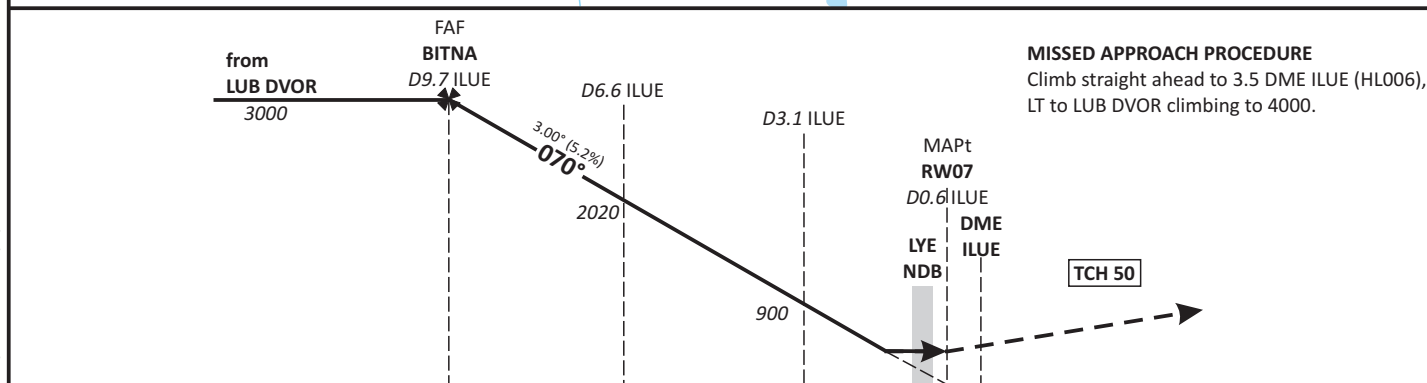
Revision: 2012-03-23 - CHANGES: Layout., OCA(H)

ATIS 119.920	BREMEN RADAR 127.670	LÜBECK TOWER 128.700	LÜBECK GROUND 121.770	Apt. Elev 53'
--------------	----------------------	----------------------	-----------------------	---------------



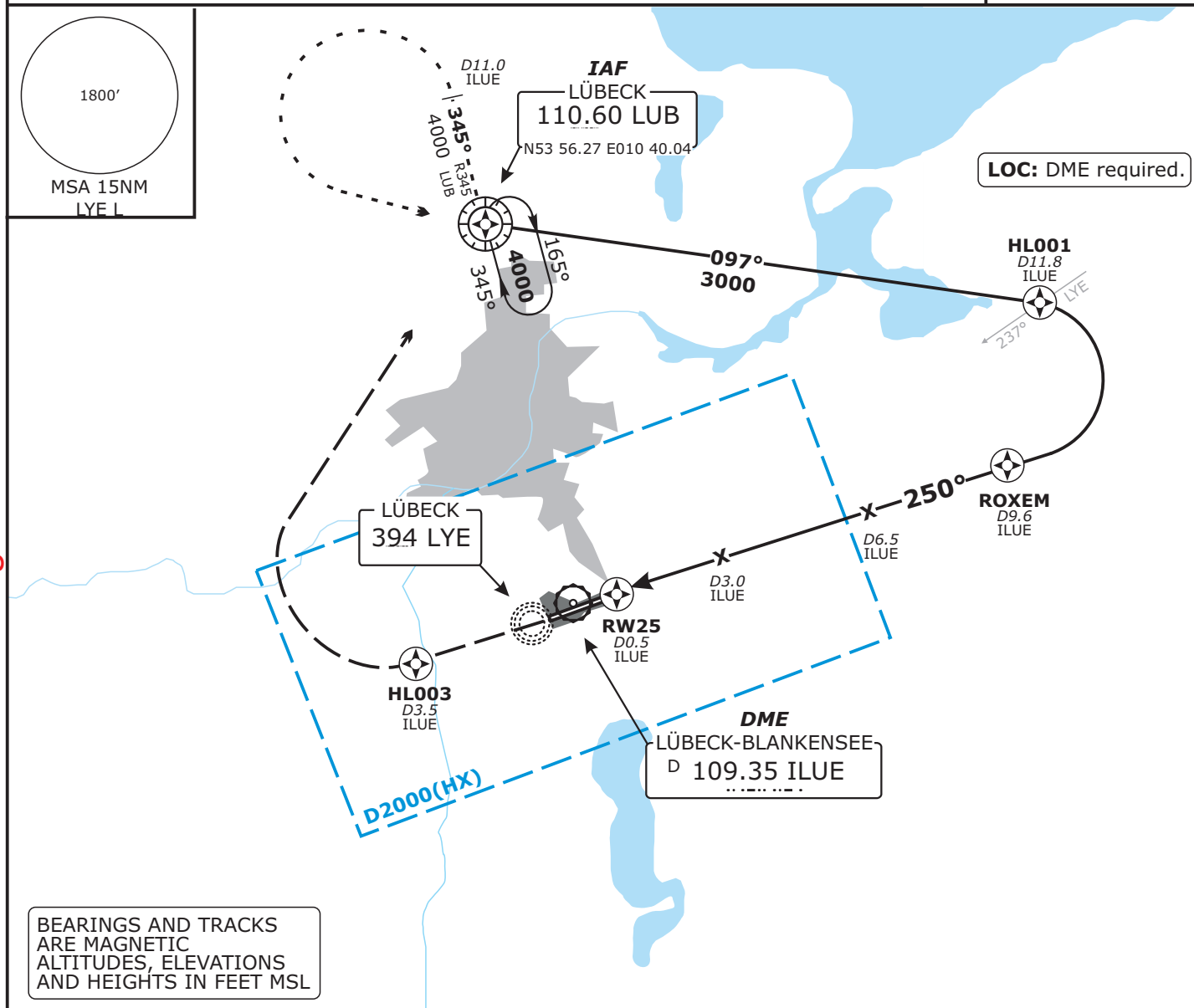
Do not use for real life navigation

BEARINGS AND TRACKS ARE MAGNETIC
ALTITUDES, ELEVATIONS AND HEIGHTS IN FEET MSL



OCA (OCH)	A	B	C	D								
NDB-DME (GPS)	600 (450)	600 (450)	600 (450)	600 (450)								
DME ILUE						9	8	7	6	5	4	3
DIST THR						8.4	7.4	6.4	5.4	4.4	3.4	2.4
ALTITUDE						2780	2460	2140	1830	1510	1190	870
Timing not authorized for defining the MAPt.												
GS						KT	80	100	120	140	160	180
3.1 DME ILUE - 0.6 DME ILUE (2.5 NM)						MIN:SEC	1:53	1:30	1:15	1:04	0:56	0:50
Rate of descent (5.2%)						FT / MIN	420	530	640	740	850	960

ATIS 119.920	BREMEN RADAR 127.670	LÜBECK TOWER 128.700	LÜBECK GROUND 121.770	Apt. Elev 53'
--------------	----------------------	----------------------	-----------------------	---------------

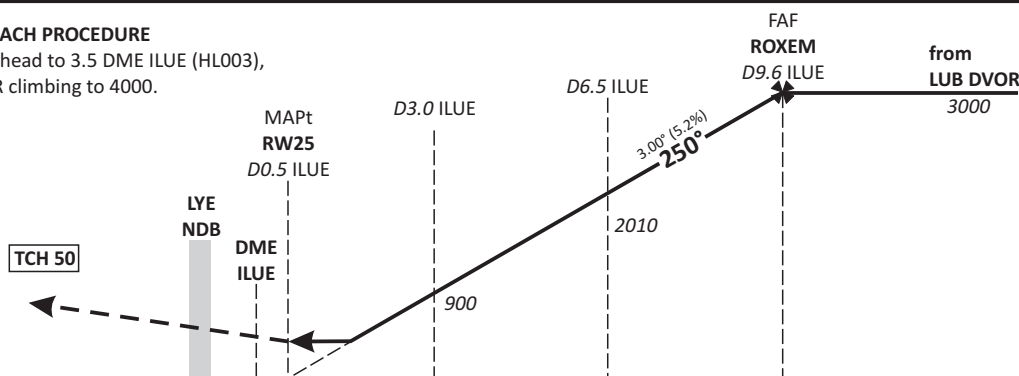


Do not use for real life navigation

BEARINGS AND TRACKS
ARE MAGNETIC
ALTITUDES, ELEVATIONS
AND HEIGHTS IN FEET MSL

MISSED APPROACH PROCEDURE

Climb straight ahead to 3.5 DME ILUE (HL003),
RT to LUB DVOR climbing to 4000.



OCA (OCH)	A	B	C	D
NDB-DME (GPS)	590 (540)	590 (540)	590 (540)	590 (540)

DME ILUE	3	4	5	6	7	8	9
DIST THR	2.5	3.5	4.5	5.5	6.5	7.5	8.5
ALTITUDE	900	1220	1540	1860	2170	2490	2810

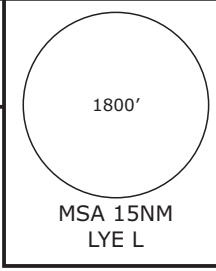
Timing not authorized for defining the MAPt.

GS	KT	80	100	120	140	160	180
3.0 DME ILUE - 0.5 DME ILUE (2.5 NM)	MIN:SEC	1:53	1:30	1:15	1:04	0:56	0:50
Rate of descent (5.2%)	FT / MIN	420	530	640	740	850	960

ATIS
119.920

BREMEN RADAR
127.670

TRANS ALT
5000'



BOGMU
(Clearance Limit)
N 53 58.45
E010 17.20
D31.0 LBE



BOGMU 07
<5.1> 164° 4000

HL224
IAS 220 KT

REMARK

1. USE OF TRANSITIONS PROCEDURE ONLY WHEN CLEARED BY ATC.
2. SPEED RESTRICTIONS ON TRANSITION ALWAYS MANDANTORY, UNLESS CANCELLED BY ATC.

HL225
IAS 220 KT

<5.1> 160°
3000

LÜBECK
394 LYE
N53 48.03 E010 41.45



(FAF)
BITNA
IAS 170 KT
3000

<3.9> 071°
3000

HL265

HAMBURG
D113.10 HAM
N53 41.08 E010 12.15

HL245
IAS 220 KT

<5.7> 304°
3000

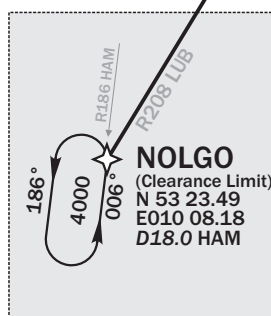
RARUP 07
<9.9> 273° 4000

R098 HAM



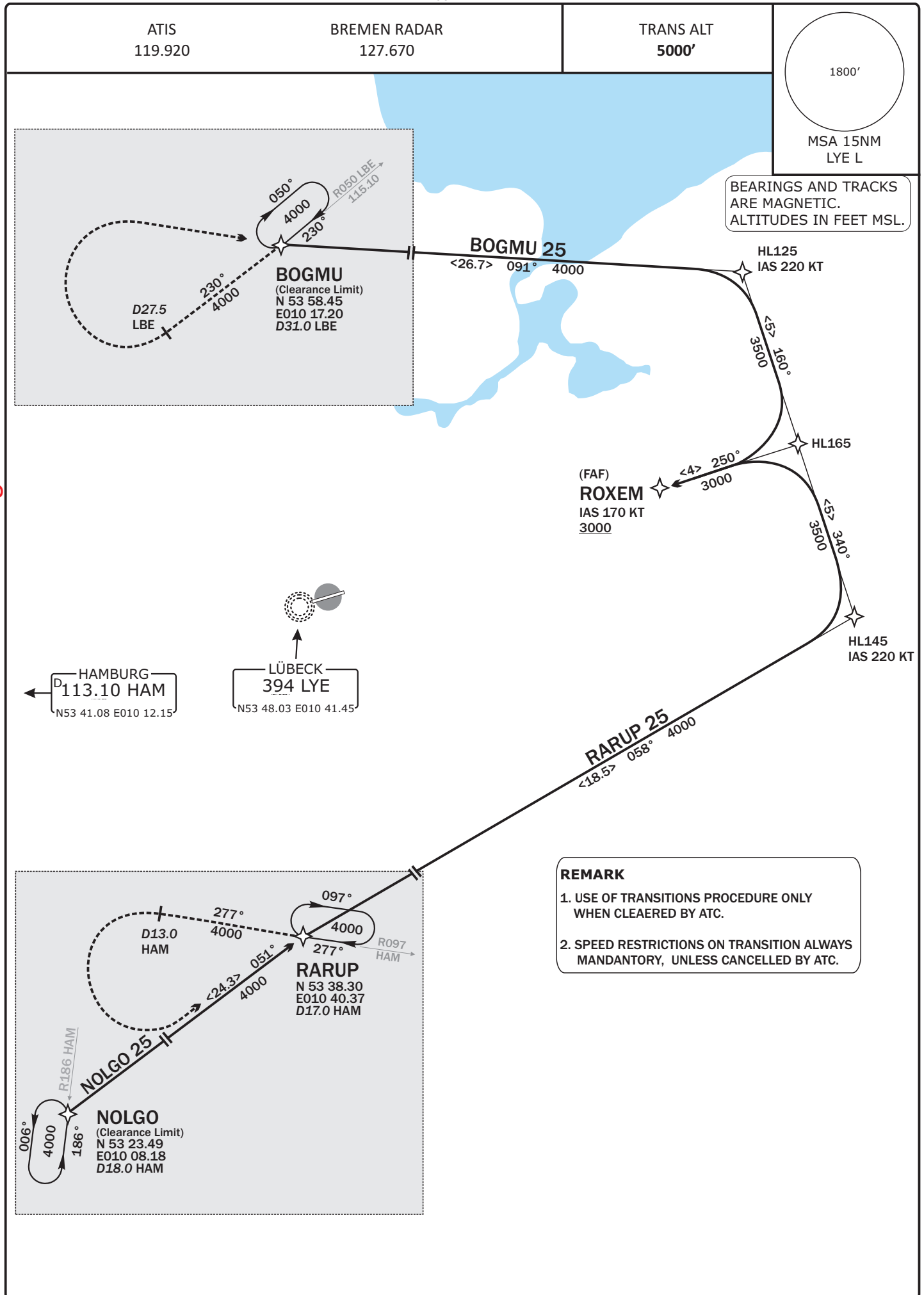
RARUP
N 53 38.30
E010 40.37
D17.0 HAM

NOLGO 07
<18.2> 029° 4000



NOLGO
(Clearance Limit)
N 53 23.49
E010 08.18
D18.0 HAM

Do not use for real life navigation



Do not use for real life navigation

DESIGNATOR	ROUTE	After Take-Off		Remarks
		climb to	contact	
LUB 4J	LUBECK FOUR JULIETT 5000 ft On track 070° LYE to 3.5 DME ILUE; LT, on R121 LUB to LUB. GPS/FMS RNAV: [A500+] - <u>HL011[L]</u> - HL012 - LUB	5000 ft	Bremen Radar 127.670	
RAMAR 4J	RAMAR FOUR JULIETT On track 070° LYE to 5.3 DME ILUE; RT, on R182 MIC to RAMAR. GPS/FMS RNAV: [A500+] - <u>HL013[L]</u> - HL014 - RAMAR.			
HAM 5J	HAMBURG FIVE JULIETT On track 070° LYE to 5.3 DME ILUE; RT, on R078 HAM to HAM. GPS/FMS RNAV: [A500+] - <u>HL013[R]</u> - HL015 - HAM.			

(Sample: HL011 fly-over way point.)

Contact Bremen Radar immediately after take-off!

Do not use for real life navigation

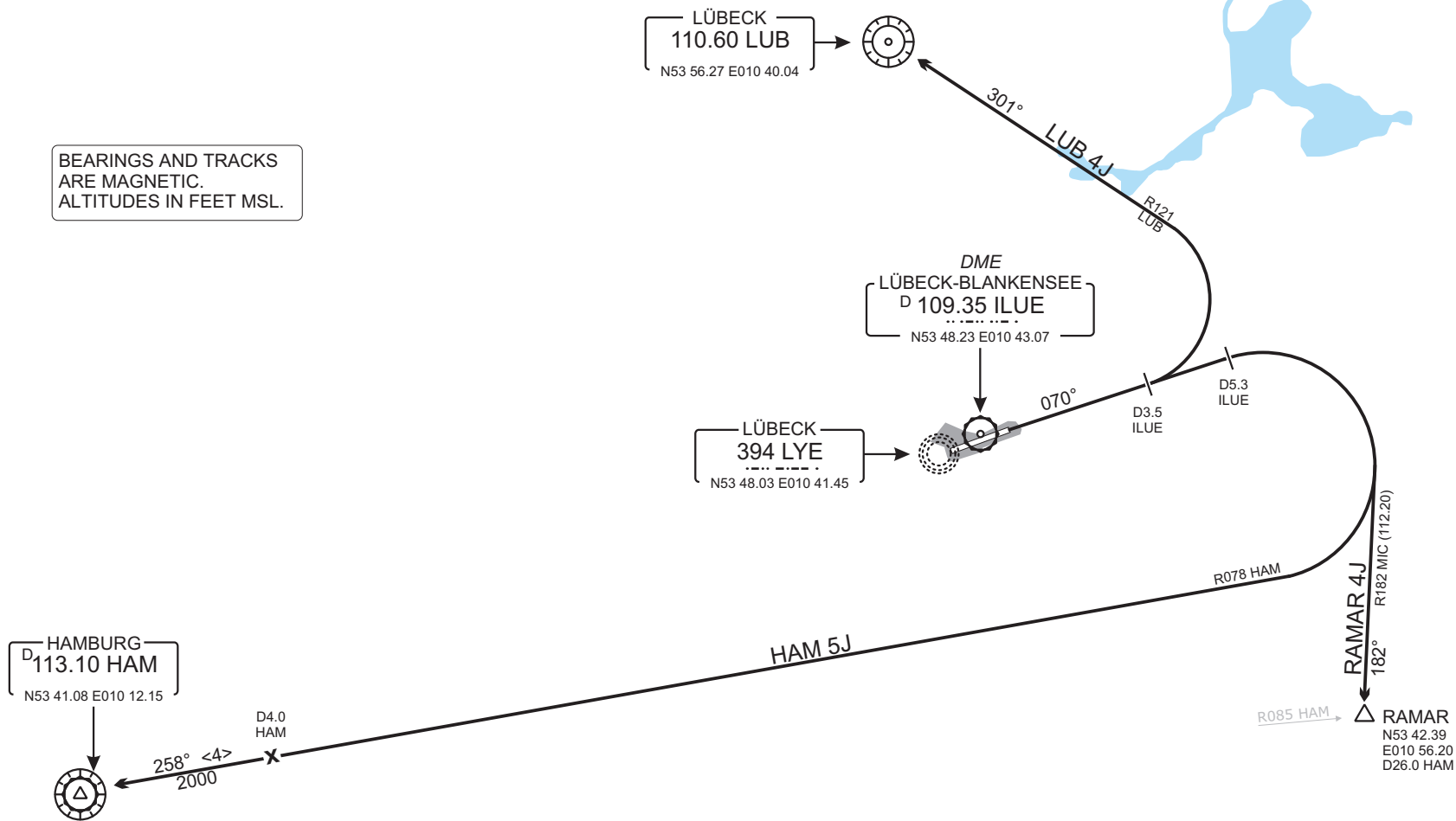
Do not use for real life navigation

Revision: 2012-03-23 - CHANGES: Tracks, radial.

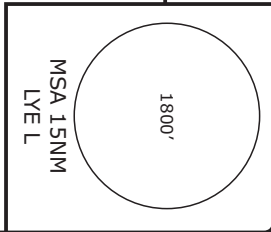
© VATSIM Germany nav@vatsim-germany.org

www.vatsim-germany.org

BEARINGS AND TRACKS
ARE MAGNETIC.
ALTITUDES IN FEET MSL.



ATIS	119.920	LÜBECK GROUND	121.770	BREMEN RADAR	127.670	TRANS. ALT	5000'
		LÜBECK TOWER	120.170				



Lübeck, GERMANY
Lübeck-Blankensee



Eff: 08 MAR 12

LBC/EDHL
SID Rwy 07

DESIGNATOR	ROUTE	After Take-Off		Remarks
		climb to	contact	
LUB 4K	LUBECK FOUR KILO Direct LYE, on track 250° to 3.5 DME ILUE; RT, on R208 LUB to LUB. GPS/FMS RNAV: [A500+] - <u>HL021</u> [L] - HL022 - LUB	5000 ft	Bremen Radar 127.670	
RAMAR 4H	RAMAR FOUR HOTEL Direct LYE, on track 250° to 5.5 DME ILUE; LT, on R085 HAM to RAMAR. GPS/FMS RNAV: [A500+] - <u>HL023</u> [L] - HL024 - RAMAR.			
HAM 5H	HAMBURG FIVE HOTEL Direct LYE, on track 250° to 3.5 DME ILUE; LT, on R066 HAM to HAM. GPS/FMS RNAV: [A500+] - <u>HL021</u> [R] - HAM.			

(Sample: HI021 fly-over way point.)

Contact Bremen Radar immediately after take-off!

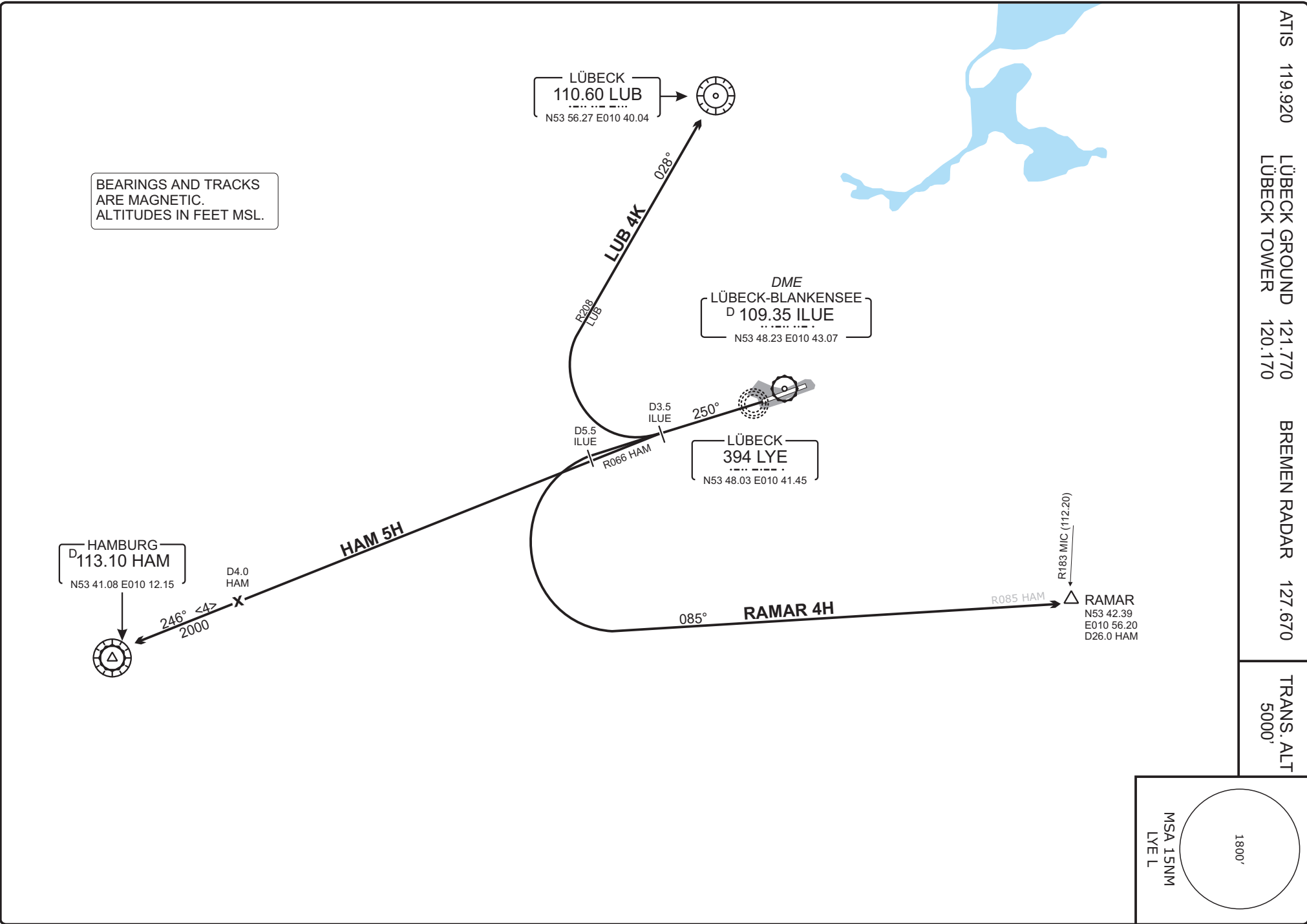
Do not use for real life navigation

Do not use for real life navigation

Revision: 2012-03-23 - CHANGES: Tracks, radial.

© VATSIM Germany nav@vatsim-germany.org

www.vatsim-germany.org



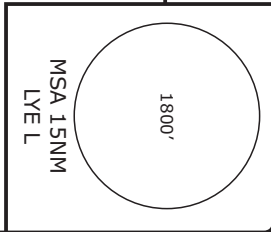
Lübeck, GERMANY
Lübeck-Blankensee



Eff: 08 MAR 12

ATIS 119.920 LÜBECK GROUND 121.770 BREMEN RADAR 127.670
LÜBECK TOWER 120.170

TRANS. ALT
5000'



LBC/EDHL
SID RWY 25