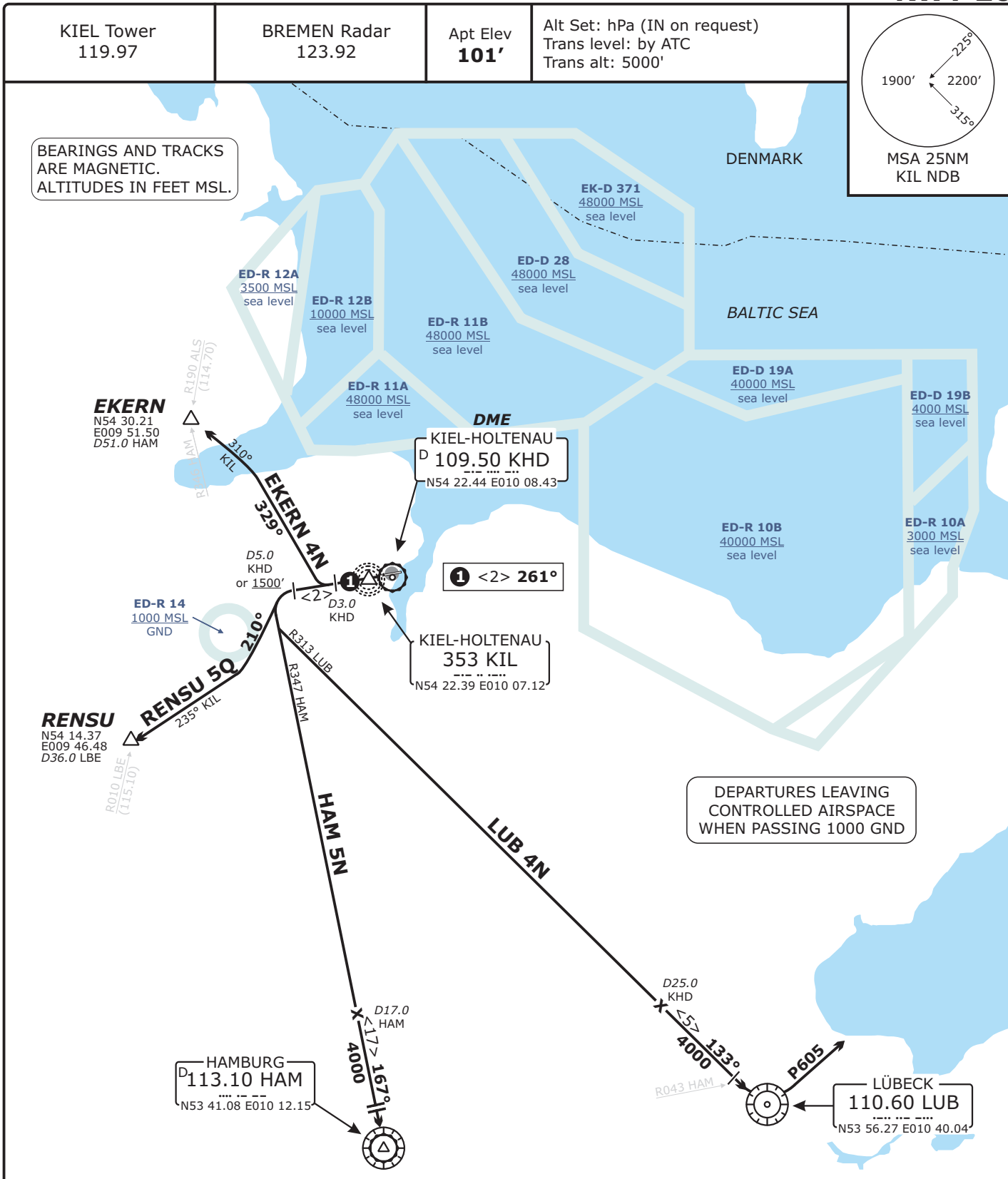


EDHK KIEL-HOLTENAU

Valid for flight simulation use only - do not use for real life navigation



| SID | ROUTING | GPS/FMS RNAV |
|-----------------|---|--|
| EKERN 4N | EKERN FOUR NOVEMBER - Direct to KIL, on track 261° KIL to 3.0 DME KHD, turn RIGHT, on track 329° to intercept track 310° KIL to EKERN. | [A500+] HK200[R] - HK206[L] - EKERN |
| HAM 5N | HAMBURG FIVE NOVEMBER - Direct to KIL, on track 261° KIL to 5.0 DME KIL or 1500', whichever is later, turn LEFT, on R347 HAM to HAM. | [A500+] HK203[L] - HAM |
| LUB 4N | LÜBECK FOUR NOVEMBER - Direct to KIL, on track 261° KIL to 5.0 DME KHD or 1500', whichever is later, turn LEFT, on R313 LUB to LUB. | [A500+] <u>HK201</u> [L] - HK204 - LUB |
| RENSU 5Q | RENSU FIVE QUEBEC - Direct to KIL, on track 261° KIL to 5.0 DME KHD or 1500', whichever is later, turn LEFT, on track 210° to intercept track 235° KIL to RENSU. | [A500+] HK202[L] - HK205[R] - RENSU |

(Sample: HK201 fly-over waypoint)

CHANGES: Note added, ED-Rs.