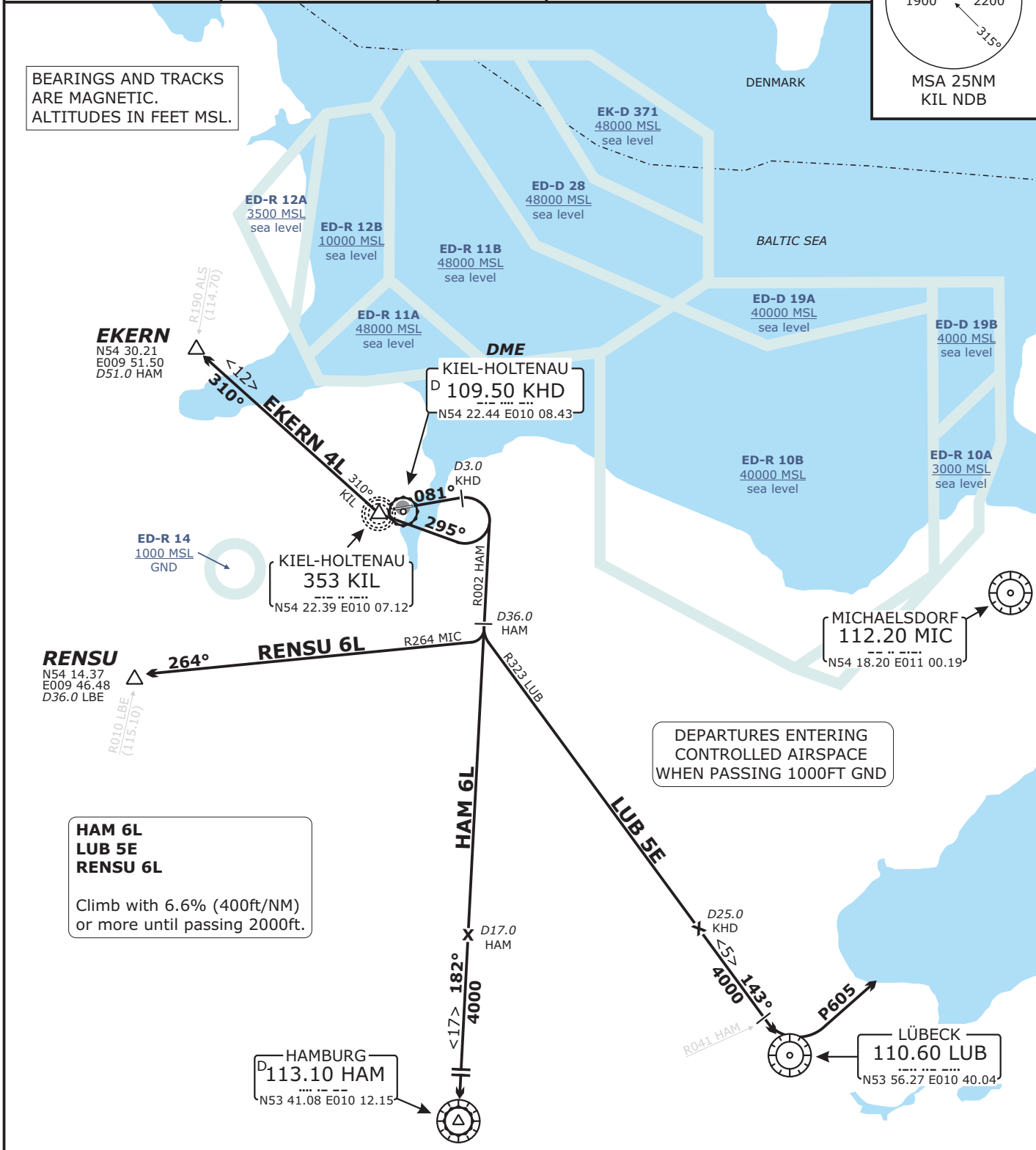


EDHK KIEL-HOLTENAU

Valid for flight simulation use only - do not use for real life navigation

KIEL Tower 119.97	BREMEN Radar 123.92	Apt Elev <b>101'</b>	Alt Set: hPa (IN on request) Trans level: by ATC Trans alt: 5000'	<p>MSA 25NM KIL NDB</p>
<p>BEARINGS AND TRACKS ARE MAGNETIC. ALTITUDES IN FEET MSL.</p>				



Initial climb clearance **4000 ft**

SID	ROUTING	GPS/FMS RNAV
<b>EKERN 4L</b>	<b>EKERN FOUR LIMA</b> - On runway track to 3.0 DME KHD; RT, on track 295° KIL to KIL, on track 310° KIL to EKERN.	[A500+] HK100[R] - HK102 - KIL[R] - EKERN
<b>HAM 6L</b>	<b>HAMBURG SIX LIMA</b> - On runway track to 3.0 DME KHD; RT, on R002 HAM to HAM.	[A500+] HK101[R] - HAM
<b>LUB 5E</b>	<b>LÜBECK FIVE ECHO</b> - On runway track to 3.0 DME KHD; RT, on R 002 HAM to 36.0 DME HAM; LT, on R323 LUB to LUB.	[A500+] HK101[R] - HK103[L] - LUB
<b>RENSU 6L</b>	<b>RENSU SIX LIMA</b> - On runway track to 3.0 DME KHD; RT, on R002 HAM to 36.0 DME HAM; RT, on R264 MIC to RENSU.	[A500+] HK101[R] - HK104[R] - RENSU

(Sample: HK100 fly-over w/p)

CHANGES: Note added, ED-Rs.