

KIEL, GERMANY ILS or LOC RWY 08

EDHK KIEL-HOLTENAU

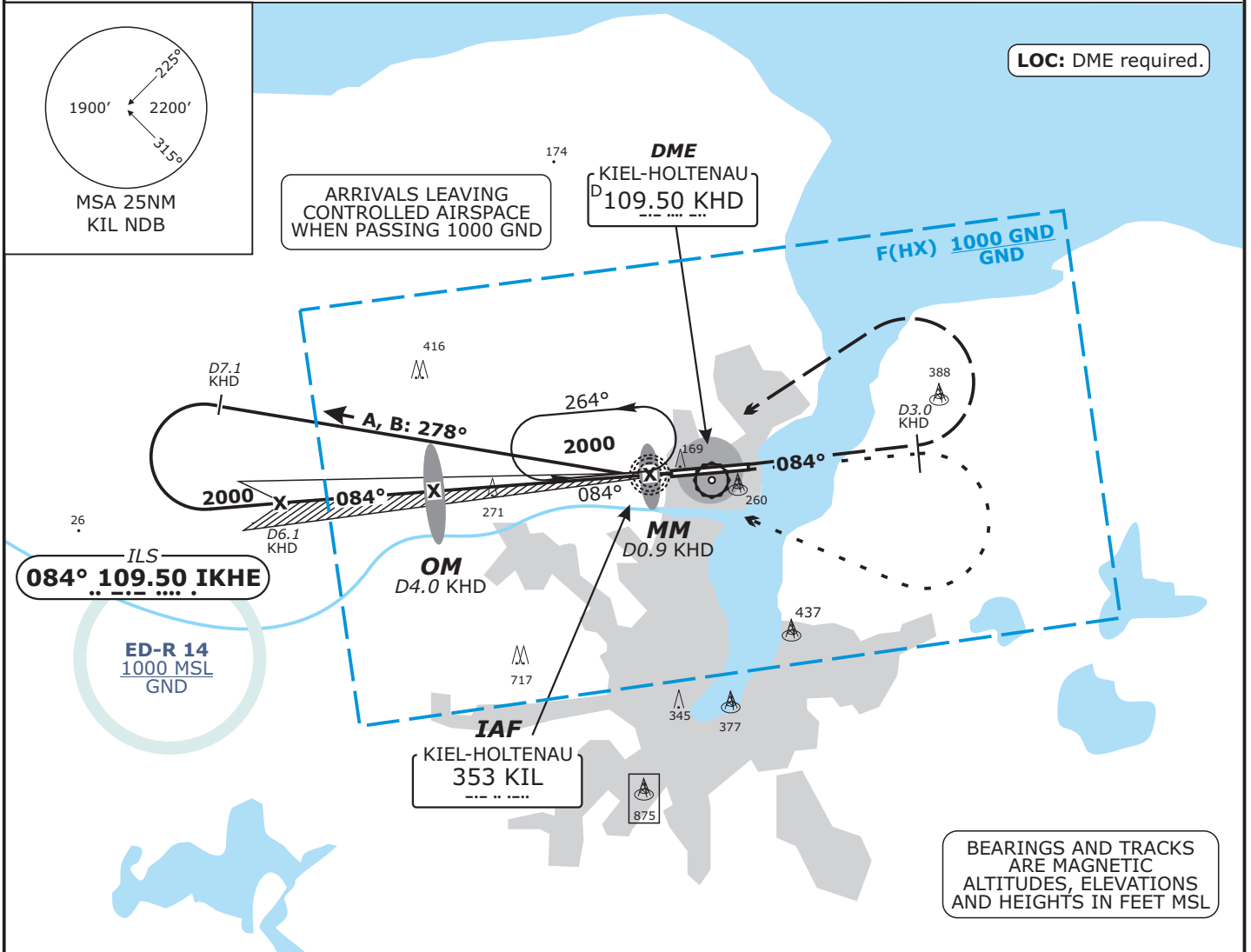
Valid for flight simulation use only - do not use for real life navigation

BREMEN Radar 123.92		KIEL Tower 119.97		
------------------------	--	----------------------	--	--

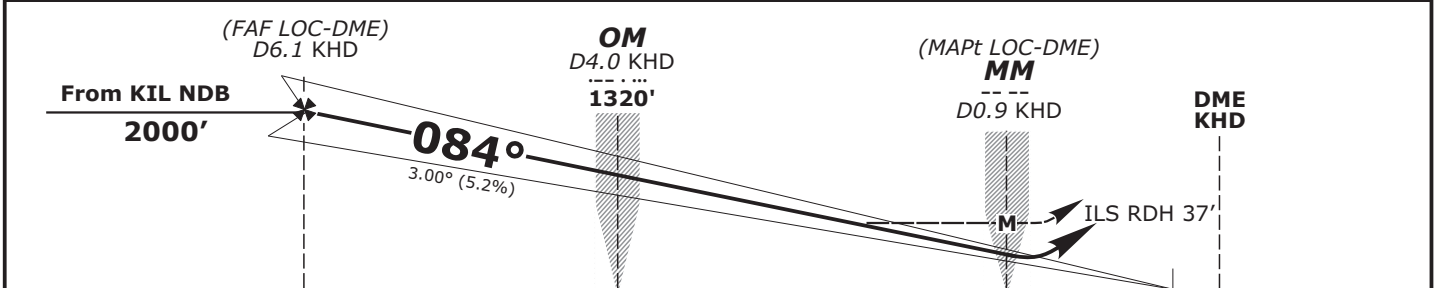
LOC IKHE 109.50	Final Apch Crs 085°	GS OM 1320' (1219')	ILS OCA(H) Refer to Minimums	Apt Elev 101'
------------------------------	----------------------------------	----------------------------------	------------------------------------	---------------

MISSED APCH: Climb straight ahead to 3.0 DME KHD, turn LEFT, inbound to KIL NDB climbing to 2000'.

Alt Set: hPa (IN on req) Trans level: By ATC Trans alt: 5000'



LOC (GS OUT)	DME KHD	6.0	5.0	4.0	3.0	2.0
	ALTITUDE	1960'	1640'	1320'	1000'	680'



Flight Simulator-OPS

	ILS CAT I OCA(H)	LOC-DME OCA(H)	CIRCLING* OCA(H)	Gnd speed-Kts	80	100	120	140
				Descent Gradient 5.2% or 3.00°	420	530	640	740
				MAP at MM.				
A	345 (246)	520 (420)	560	* NORTH OF AERODROME ONLY.				
B								
C								
D								

CHANGES: Note added, ED-R.