

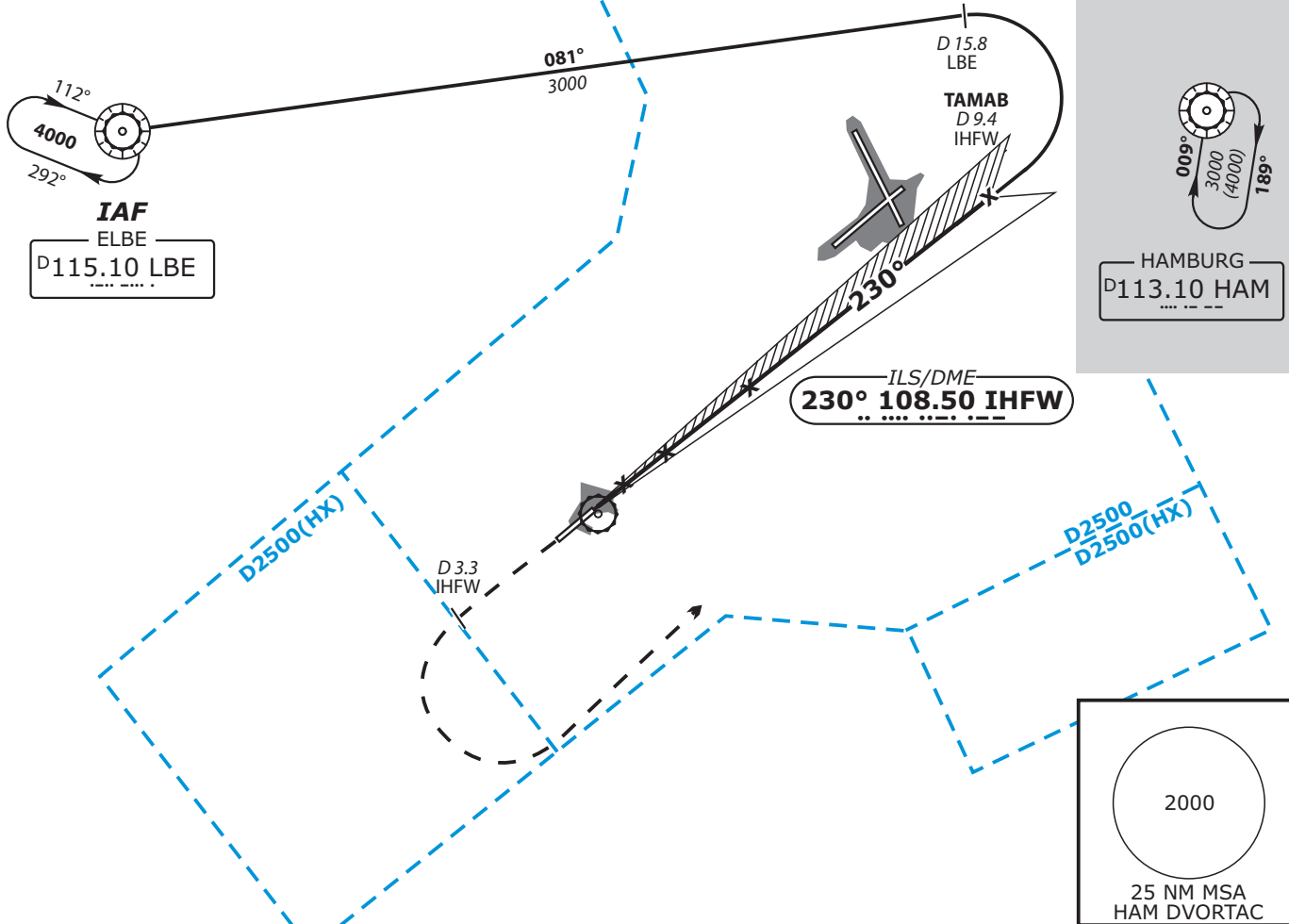
ATIS	123.120	TOWER	123.250
BREMEN RADAR	127.670		
	134.250		
DIRECTOR	118.200		

BEARINGS ARE MAGNETIC
ALTITUDES, ELEVATIONS
AND HEIGHTS IN FEET
ALTITUDES IN BRACKETS
ARE OPERATIONAL.

In case of radio communication failure
proceed from HAM DVORTAC to LBE.

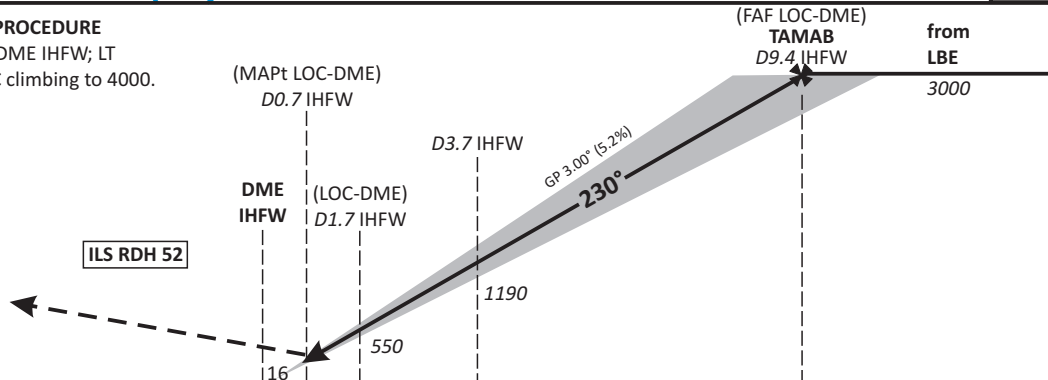
LOC: DME required.

Do not use for real life navigation



MISSED APPROACH PROCEDURE

Climb straight to 3.3 DME IHFW; LT
direct HAM DVORTAC climbing to 4000.



OCA (OCH)	A	B	C	D	D _L
ILS-DME CAT I	252 (236)	262 (246)	272 (256)	282 (266)	
LOC-DME	450 (440)	450 (440)	450 (440)	450 (440)	
CIRCLING*	590	730	910	910	

DME IHFW	2	3	4	5	6	7	8	9
DIST THR	1.8	2.8	3.8	4.8	5.8	6.8	7.8	8.8
ALTITUDE	650	960	1280	1600	1920	2240	2560	2870

LOC-DME: Timing not authorized for defining the MAPt.

GS	KT	80	100	120	140	160	180
3.7 DME IHFW - THR (3.5 NM)	MIN:SEC	2:38	2:06	1:45	1:30	1:19	1:10
Rate of descent (5.2%)	FT / MIN	420	530	640	740	850	960

MINIMUM GROUND VISIBILITY REQUIRED: 1000m. *NORTHWEST OF AERODROME ONLY.