

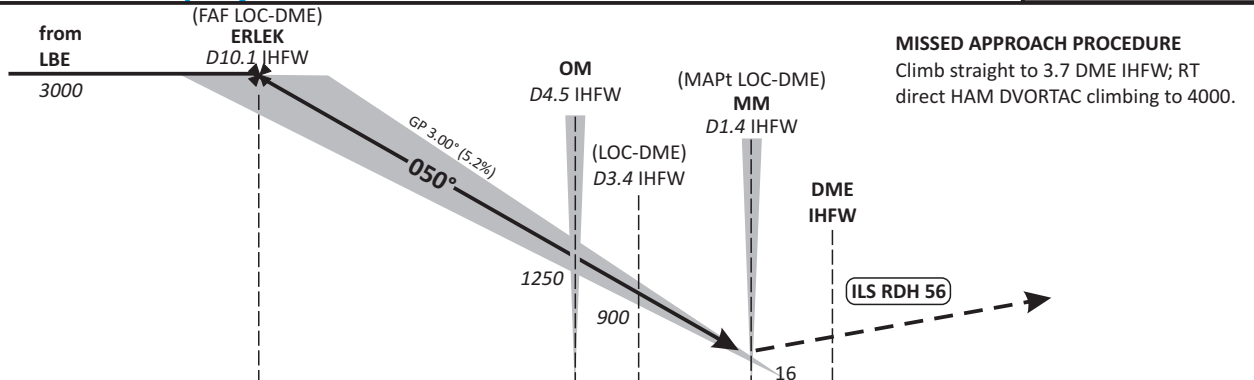
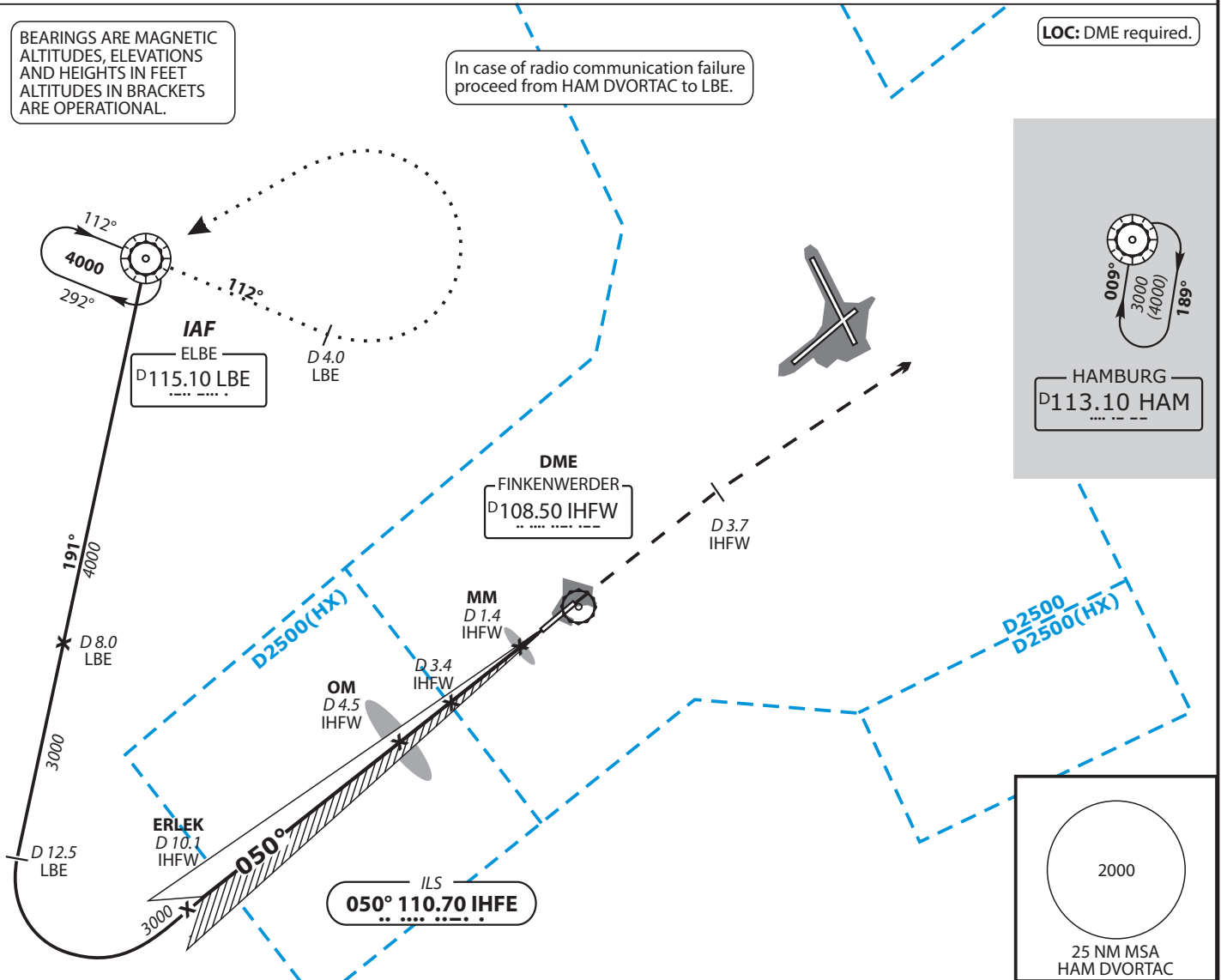
ATIS	123.120	TOWER	123.250
BREMEN RADAR	127.670		
	134.250		
DIRECTOR	118.200		

BEARINGS ARE MAGNETIC
ALTITUDES, ELEVATIONS
AND HEIGHTS IN FEET
ALTITUDES IN BRACKETS
ARE OPERATIONAL.

In case of radio communication failure
proceed from HAM DVORTAC to LBE.

LOC: DME required.

Do not use for real life navigation



OCA (OCH)	A	B	C	D	D _L
ILS-DME CAT I	211 (195)	221 (205)	231 (215)	241 (225)	
LOC-DME	420 (410)	420 (410)	420 (410)	420 (410)	
CIRCLING*	590	730	910	910	

DME IHFW	9	8	7	6	5	4	3	2
DIST THR	8.2	7.2	6.2	5.2	4.2	3.2	2.2	1.2
ALTITUDE	2690	2370	2050	1730	1410	1100	780	460

LOC-DME: Timing not authorized for defining the MAPt.

GS	KT	80	100	120	140	160	180
OM - THR (3.6 NM)	MIN:SEC	2:42	2:10	1:48	1:33	1:21	1:11
Rate of descent (5.2%)	FT / MIN	420	530	640	740	850	960

ILS RWY 05 MNM GND VIS REQUIRED: 1000m. FOR CIRCLING APCH TO RWY23 MNM GND VIS REQUIRED: 2000m. *NORTHWEST OF AERODROME ONLY.