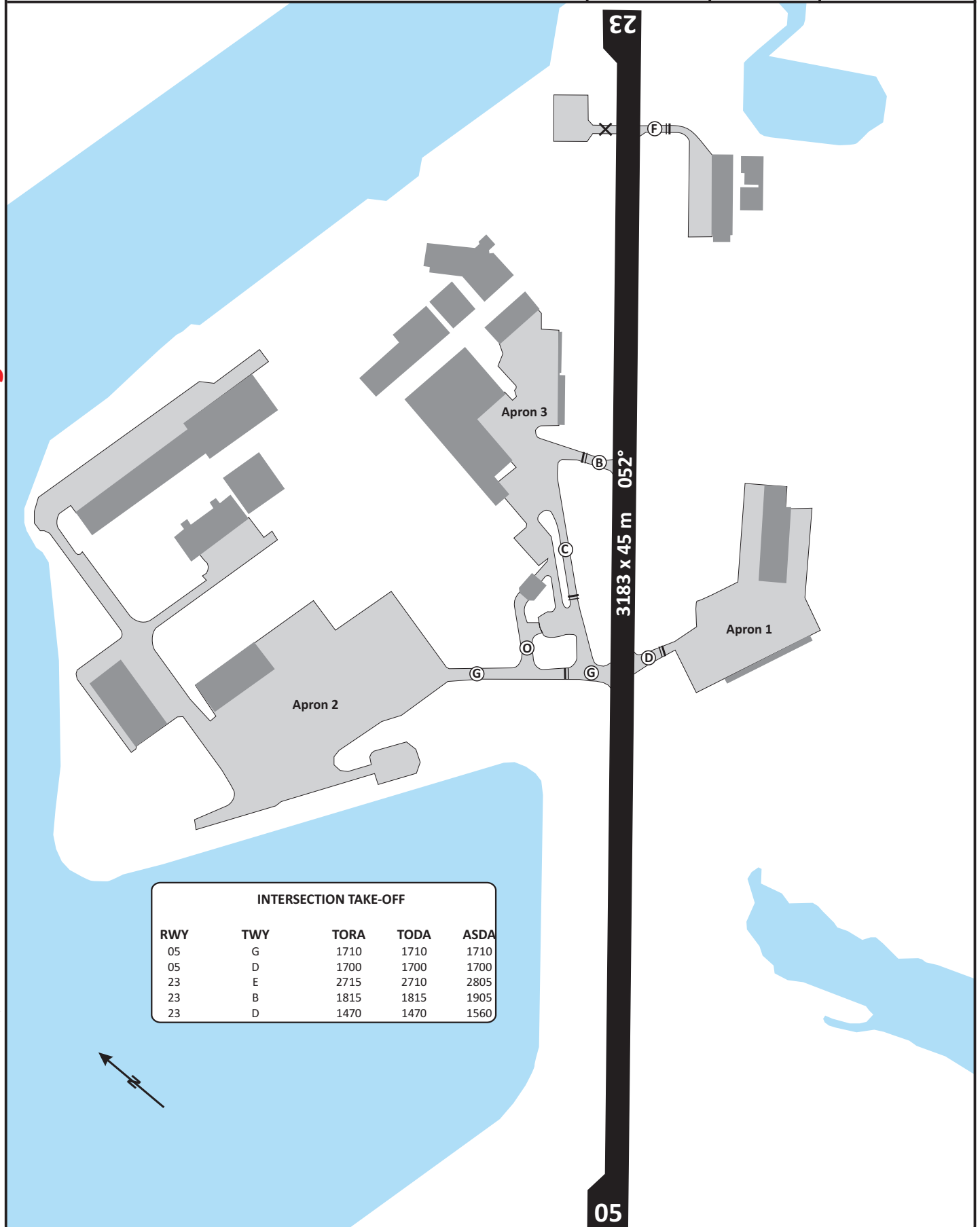


ATIS	123.120	TOWER	123.250	APT ELEV. 16 ft	Trans. Alt 5000'	<p>MSA 25NM HAM VORTAC</p>
BREMEN RADAR	127.670		134.250			

Do not use for real life navigation



INTERSECTION TAKE-OFF				
RWY	TWY	TORA	TODA	ASDA
05	G	1710	1710	1710
05	D	1700	1700	1700
23	E	2715	2710	2805
23	B	1815	1815	1905
23	D	1470	1470	1560

Revision: 2010-06-27 - CHANGES: Layout

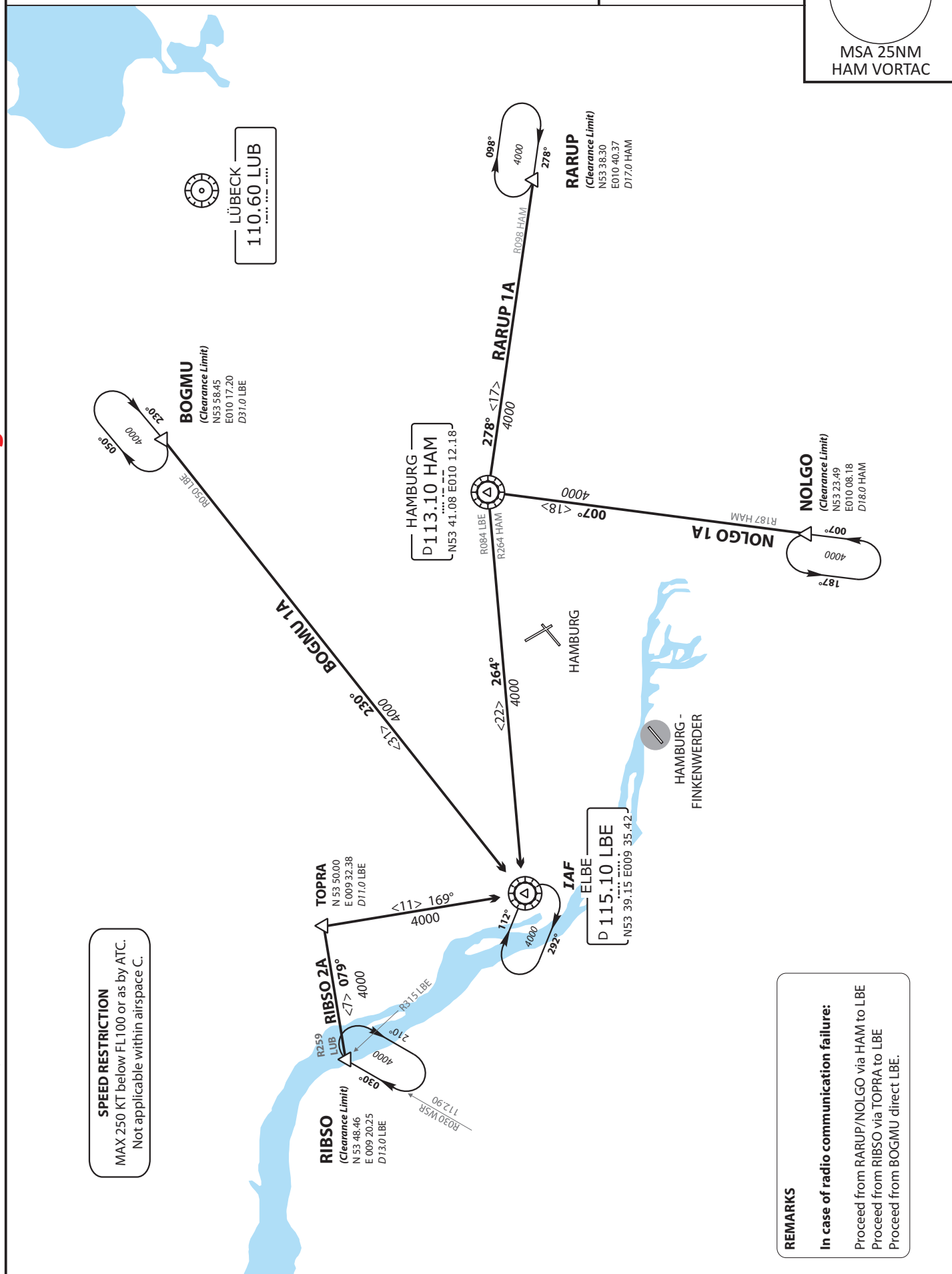
ATIS 123.120

BREMEN RADAR 127.670
134.250

TRANS ALT
5000'

2000'
MSA 25NM
HAM VORTAC

Do not use for real life navigation



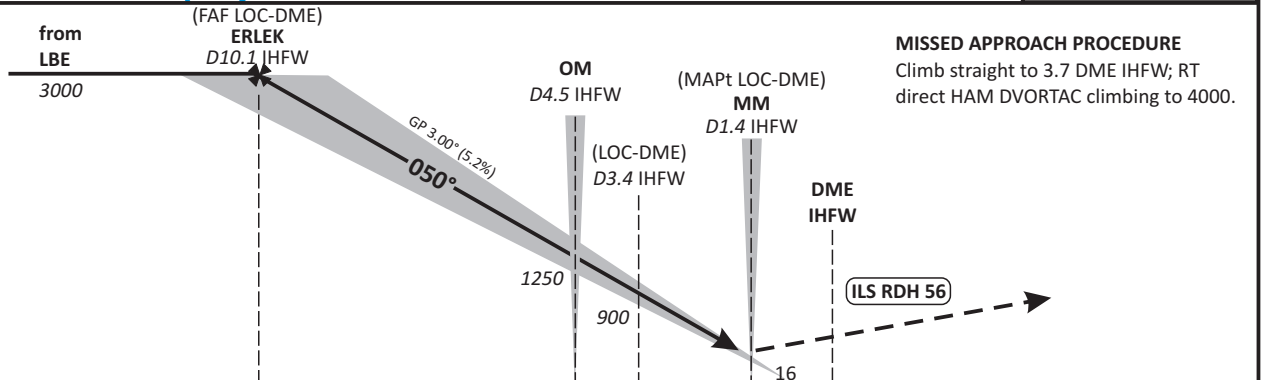
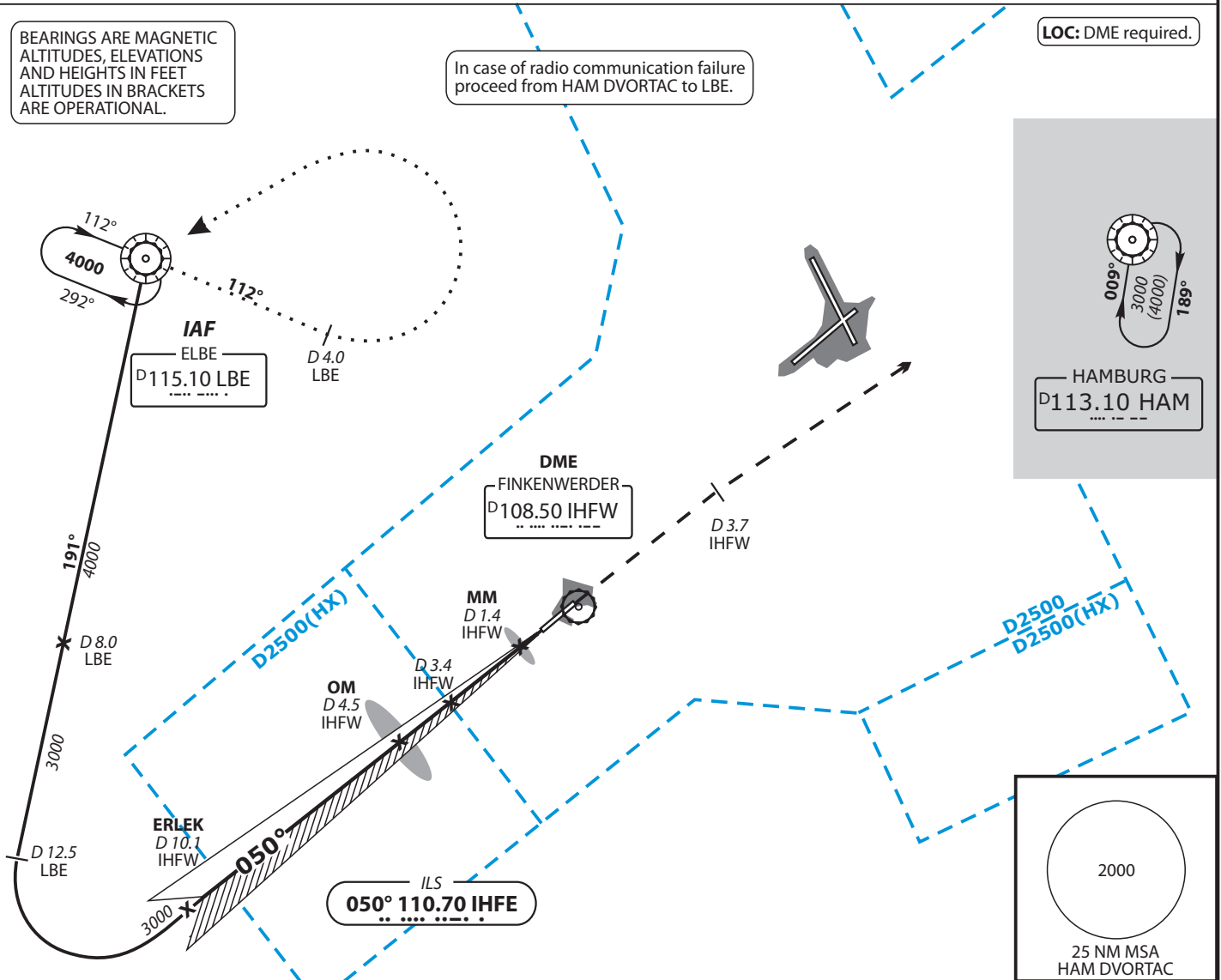
ATIS	123.120	TOWER	123.250
BREMEN RADAR	127.670		
	134.250		
DIRECTOR	118.200		

BEARINGS ARE MAGNETIC
ALTITUDES, ELEVATIONS
AND HEIGHTS IN FEET
ALTITUDES IN BRACKETS
ARE OPERATIONAL.

In case of radio communication failure
proceed from HAM DVORTAC to LBE.

LOC: DME required.

Do not use for real life navigation



OCA (OCH)	A	B	C	D	D _L
ILS-DME CAT I	211 (195)	221 (205)	231 (215)	241 (225)	
LOC-DME	420 (410)	420 (410)	420 (410)	420 (410)	
CIRCLING*	590	730	910	910	

DME IHFW	9	8	7	6	5	4	3	2
DIST THR	8.2	7.2	6.2	5.2	4.2	3.2	2.2	1.2
ALTITUDE	2690	2370	2050	1730	1410	1100	780	460

LOC-DME: Timing not authorized for defining the MAPt.

GS	KT	80	100	120	140	160	180
OM - THR (3.6 NM)	MIN:SEC	2:42	2:10	1:48	1:33	1:21	1:11
Rate of descent (5.2%)	FT / MIN	420	530	640	740	850	960

ILS RWY 05 MNM GND VIS REQUIRED: 1000m. FOR CIRCLING APCH TO RWY23 MNM GND VIS REQUIRED: 2000m. *NORTHWEST OF AERODROME ONLY.

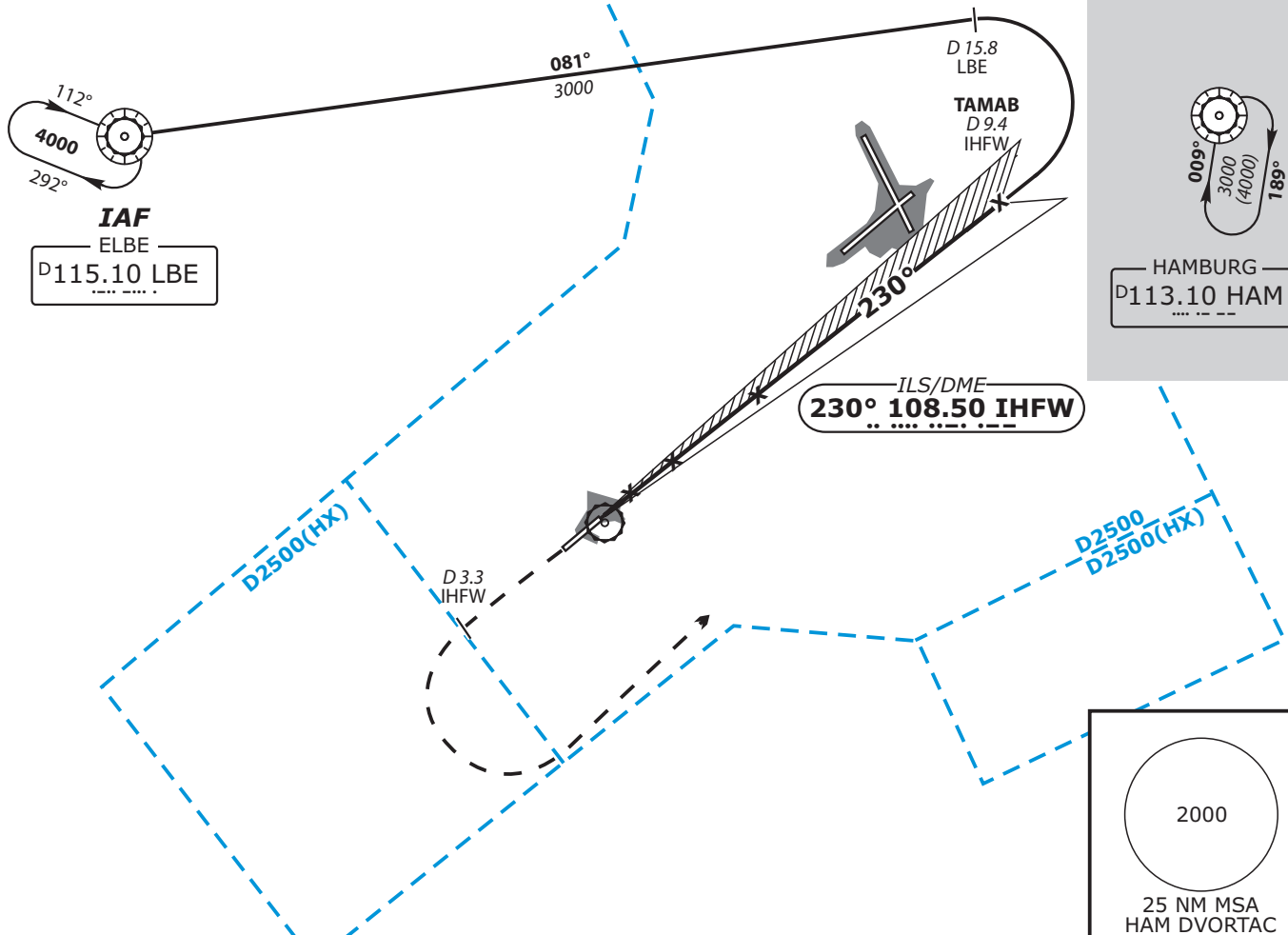
ATIS	123.120	TOWER	123.250
BREMEN RADAR	127.670		
	134.250		
DIRECTOR	118.200		

BEARINGS ARE MAGNETIC
ALTITUDES, ELEVATIONS
AND HEIGHTS IN FEET
ALTITUDES IN BRACKETS
ARE OPERATIONAL.

In case of radio communication failure
proceed from HAM DVORTAC to LBE.

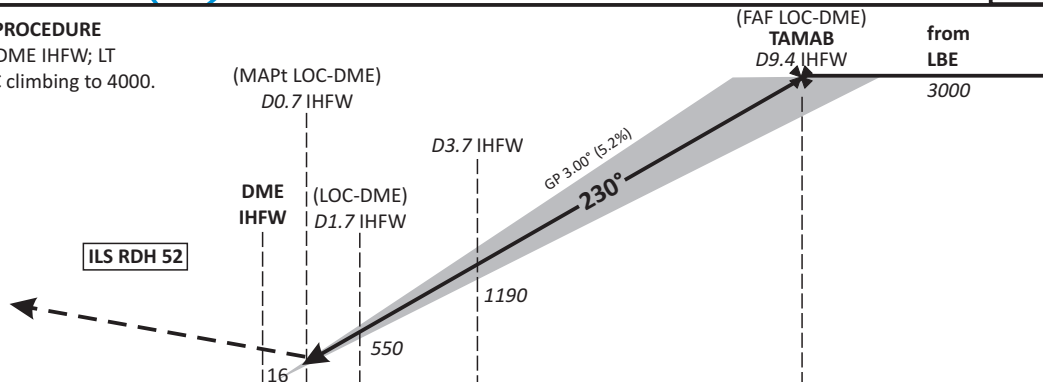
LOC: DME required.

Do not use for real life navigation



MISSED APPROACH PROCEDURE

Climb straight to 3.3 DME IHFW; LT
direct HAM DVORTAC climbing to 4000.



OCA (OCH)	A	B	C	D	D _L
ILS-DME CAT I	252 (236)	262 (246)	272 (256)	282 (266)	
LOC-DME	450 (440)	450 (440)	450 (440)	450 (440)	
CIRCLING*	590	730	910	910	

DME IHFW	2	3	4	5	6	7	8	9
DIST THR	1.8	2.8	3.8	4.8	5.8	6.8	7.8	8.8
ALTITUDE	650	960	1280	1600	1920	2240	2560	2870

LOC-DME: Timing not authorized for defining the MAPt.

GS	KT	80	100	120	140	160	180
3.7 DME IHFW - THR (3.5 NM)	MIN:SEC	2:38	2:06	1:45	1:30	1:19	1:10
Rate of descent (5.2%)	FT / MIN	420	530	640	740	850	960

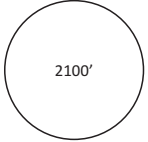
MINIMUM GROUND VISIBILITY REQUIRED: 1000m. *NORTHWEST OF AERODROME ONLY.

Revision: 2010-07-01 - CHANGES: Layout, OCA(H).

Do not use for real life navigation

DESIGNATOR	ROUTE	After Take-Off		Remarks	
		climb to	contact		
HAM 7E	HAMBURG SEVEN ECHO On track 050° to 3.6 DME IHFW or 1500, whichever is later; RT, on R236 HAM to HAM. Climb with 5.1% (310 ft/NM) or more up to 300 ft. GPS/FMS RNAV: [A500+] - HI203[A1500+; R] - HAM.	5000 ft	Bremen Radar 127.670		
RAMAR 1E	RAMAR ONE ECHO On track 050° to 3.6 DME IHFW or 1500, whichever is later; RT, on R236 HAM to HAM; RT, on R067 HAM to LYE; RT, on track 120° LYE to RAMAR. Climb with 5.1% (310ft/NM) or more up to 300 ft. GPS/FMS RNAV: [A500+] - HI203[A1500+; R] - HAM[R] - LYE[R] - RAMAR.				
AMLUH 6E	AMLUH SIX ECHO On track 050° to 3.6 DME IHFW or 1500, whichever is later; RT, on R107 LBE to 24.6 DME LBE; RT, on R163 HAM to AMLUH. Climb with 5.1% (310 ft/NM) or more up to 300 ft. GPS/FMS RNAV: [A500+] - HI204[A1500+; R] - HI205[R] - AMLUH.				
IDEKO 6E	IDEKO SIX ECHO On track 050° to 2.6 DME IHFW; LT, on R251 HAM to 22.0 DME HAM; LT, on R186 LBE/R006 NIE to IDEKO. Climb with 5.1% (310 ft/NM) or more up to 300 ft. GPS/FMS RNAV: [A500+] - HI200[L] - HI202 - HI206[L] - IDEKO.		Bremen Radar 134.250		Mandatory for flights continuing via N850 and Y900 - TIMEN - UL126.
BASUM 1E	BASUM ONE ECHO On track 050° to 2.6 DME IHFW; LT, on R251 HAM to 25.0 DME HAM; LT, on R208 LBE to BASUM. Climb with 5.1% (310 ft/NM) or more up to 300 ft. GPS/FMS RNAV: [A500+] - HI200[L] - HI202 - HI207[L] - BASUM.				Mandatory for flights continuing via R15/UM170 OSN.
WSR 1E	WESER ONE ECHO On track 050° to 2.6 DME IHFW; LT, on R100 LBE to LBE; LT, on R233 LBE/R053 WSR to WSR. Climb with 5.1% (310 ft/NM) or more up to 300 ft. GPS/FMS RNAV: [A500+] - HI200[L] - HI201 - LBE[L] - WSR.				Mandatory for flights continuing via N125/UN125 EEL.
LBE 9E	ELBE NINE ECHO On track 050° to 2.6 DME IHFW; LT, on R100 LBE to LBE. Climb with 5.1% (310 ft/NM) or more up to 300 ft. GPS/FMS RNAV: [A500+] - HI200[L] - HI201 - LBE.				

(Sample: HI200 fly-over way point.)

ATIS	123.120	TOWER	123.250	APT ELEV. 16 ft	Trans. Alt 5000'	 MSA 25NM HAM VORTAC
BREMEN RADAR	127.670					
	134.250					

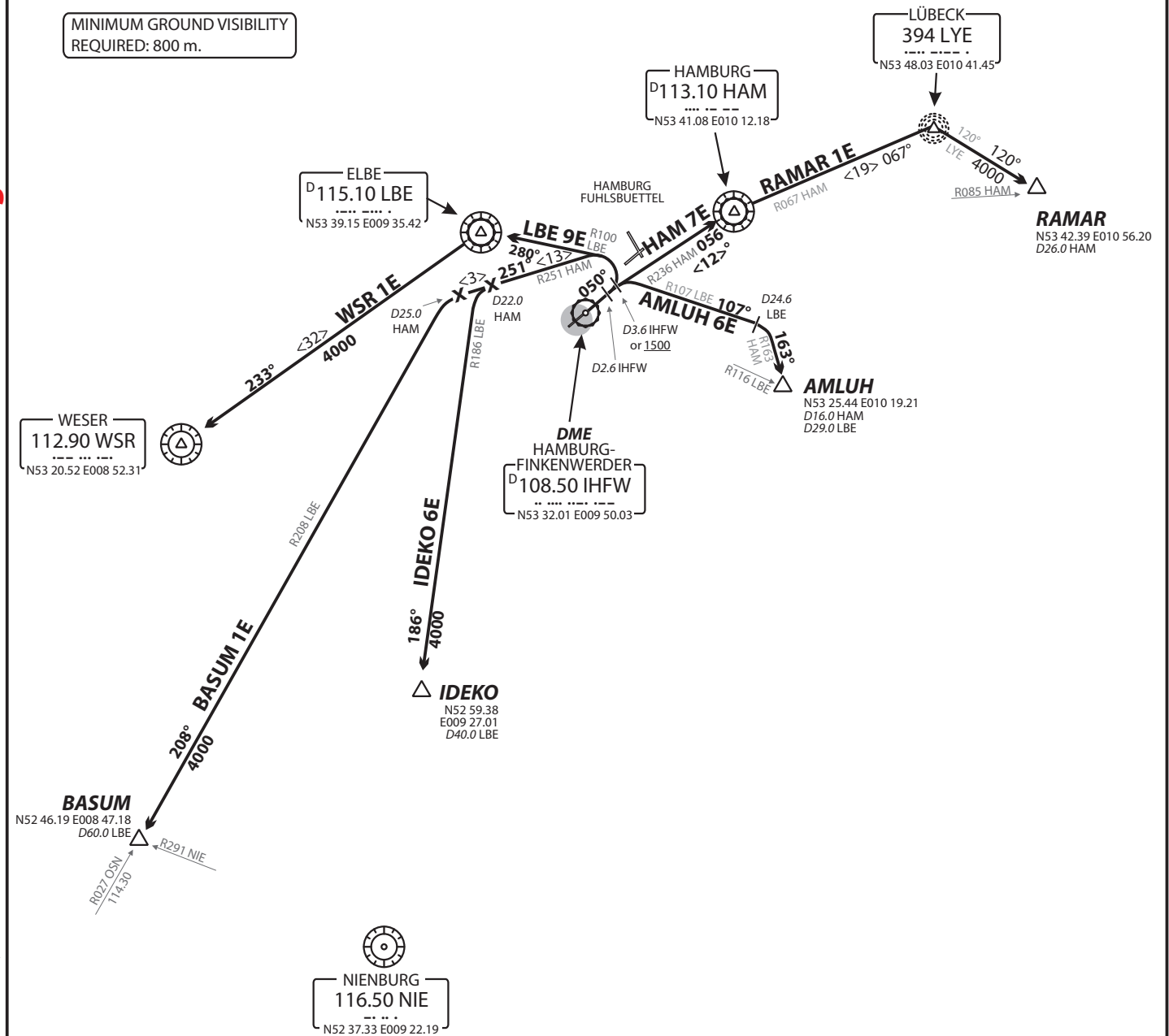
INITIAL CLIMB CLEARANCE 5000'

DEPARTURES VIA IDEKO, BASUM, LBE, WSR:
CONTACT BREMEN RADAR ON 134.250

DEPARTURES VIA RAMAR, AMLUH, HAM:
CONTACT BREMEN RADAR ON 127.670

MINIMUM GROUND VISIBILITY
REQUIRED: 800 m.

Do not use for real life navigation



Do not use for real life navigation

DESIGNATOR	ROUTE	After Take-Off		Remarks	
		climb to	contact		
HAM 7W	HAMBURG SEVEN WHISKEY On track 230° to 4.2 DME IHFW or 1500, whichever is later; LT, on R158 LBE to 15.0 DME LBE; LT, on R083 WSR, when crossing R190 HAM LT, on R179 HAM to HAM. GPS/FMS RNAV: [A500+] - HI100[A1500+; L] - HI102 - HI104[L] - HI105[L] - HAM.	4000 ft	Bremen Radar 127.670		
RAMAR 1W	RAMAR ONE WHISKEY On track 230° to 4.2 DME IHFW or 1500, whichever is later; LT, on R158 LBE to 15.0 DME LBE; LT, on R083 WSR, when crossing R190 HAM LT, on R179 HAM to HAM; RT, on R067 HAM to LYE; RT, on track 120° LYE to RAMAR. GPS/FMS RNAV: [A500+] - HI100[A1500+; L] - HI102 - HI104[L] - HI105[L] - HAM[R] - LYE[R] - RAMAR.				
AMLUH 5W	AMLUH FIVE WHISKEY On track 230° to 4.2 DME IHFW or 1500, whichever is later; LT, on R158 LBE to 15.0 DME LBE; LT, on R083 WSR to AMLUH. GPS/FMS RNAV: [A500+] - HI100[A1500+; L] - HI102 - HI104[L] - AMLUH.				
IDEKO 3W	IDEKO THREE WHISKEY On track 230° to 4.2 DME IHFW or 1500, whichever is later; RT, on R233 HAM to 28.0 DME HAM; LT, on R186 LBE/R006 NIE to IDEKO. GPS/FMS RNAV: [A500+] - DW271[R] - DW286 - WSR.		Bremen Radar 134.250		Mandatory for flights continuing via N850 and Y900 - TIMEN - UL126.
BASUM 7W	BASUM SEVEN WHISKEY On track 230° to 4.2 DME IHFW or 1500, whichever is later; RT, on R233 HAM to 41.0 DME HAM; LT, on R208 LBE to BASUM. GPS/FMS RNAV: [A500+] - HI103[A1500+; R] - HI107[L] - BASUM.				Mandatory for flights continuing via R15/UM170 OSN
WSR 6W	WESER SIX WHISKEY On track 230° to 4.2 DME IHFW or 1500, whichever is later; RT, on R074 WSR to WSR. GPS/FMS RNAV: [A500+] - HI103[A1500+; R] - WSR.				Mandatory for flights continuing via N125/UN125 EEL.
LBE 6W	ELBE SIX WHISKEY On track 230° to 4.2 DME IHFW or 1500, whichever is later; RT, on R165 LBE to LBE. GPS/FMS RNAV: [A500+] - HI100[A1500+; R] - HI101 - LBE.				

(Sample: HI100[fly-over way point.)

ATIS	123.120	TOWER	123.250	APT ELEV. 16 ft	Trans. Alt 5000'	<p>MSA 25NM HAM VORTAC</p>
BREMEN RADAR	127.670					
	134.250					

INITIAL CLIMB CLEARANCE 4000'

DEPARTURES VIA IDEKO, BASUM, LBE, WSR:
CONTACT BREMEN RADAR ON 134.250

DEPARTURES VIA RAMAR, AMLUH, HAM:
CONTACT BREMEN RADAR ON 127.670

MINIMUM GROUND VISIBILITY
REQUIRED: 400 m.

Do not use for real life navigation

