

# VATSIM Germany Instrument Approach Chart

**Bremen  
EDDW  
VOR  
RWY 27**

Elevation: 14

ATIS 132.370

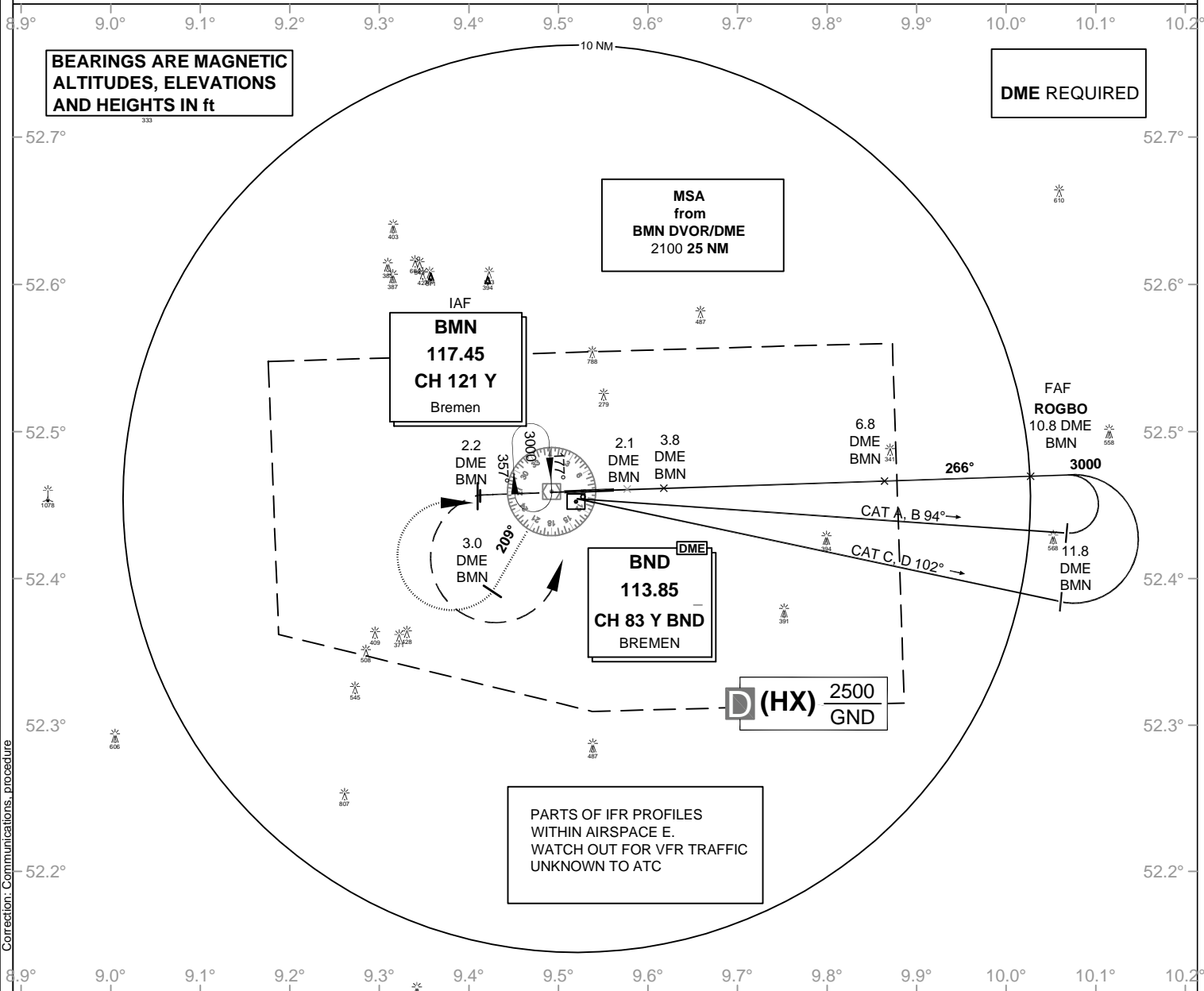
Director 125.850

Bremen Radar 124.800

Ground 121.750

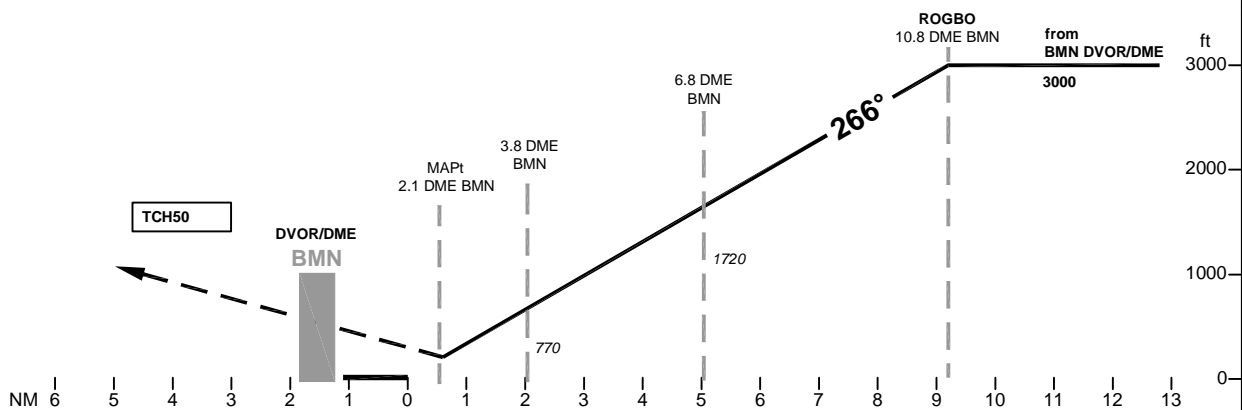
Tower 120.320

VAR: 2° E



Correction: Communications procedure

| OCA (OCH) | VOR/DME   |
|-----------|-----------|
| A         | 480 (470) |
| B         | 480 (470) |
| C         | 480 (470) |
| D         | 480 (470) |
| E         |           |
| LARGE AC  |           |



**MISSED APPROACH:** Climb straight ahead to 2.2 DME BMN; LT to BMN DVOR/DME climbing to 3000.

| DME BMN  | 10   | 9    | 8    | 7    | 6    | 5    | 4   | 3   |
|----------|------|------|------|------|------|------|-----|-----|
| DIST THR | 8.4  | 7.4  | 6.4  | 5.4  | 4.4  | 3.4  | 2.4 | 1.4 |
| ALTITUDE | 2740 | 2430 | 2110 | 1790 | 1470 | 1150 | 830 | 510 |

| GS                          | kt       | 80   | 100  | 120  | 140  | 160  | 180  |
|-----------------------------|----------|------|------|------|------|------|------|
| 6.8 DME BMN - MAPt (4.7 NM) | MIN:SEC  | 3:32 | 2:49 | 2:21 | 2:01 | 1:46 | 1:34 |
| Rate of descent (5.2%)      | ft / MIN | 420  | 530  | 640  | 740  | 850  | 960  |

Timing not authorized for defining the MAPt