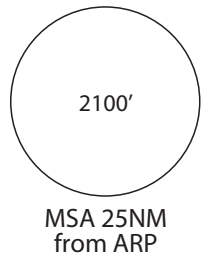


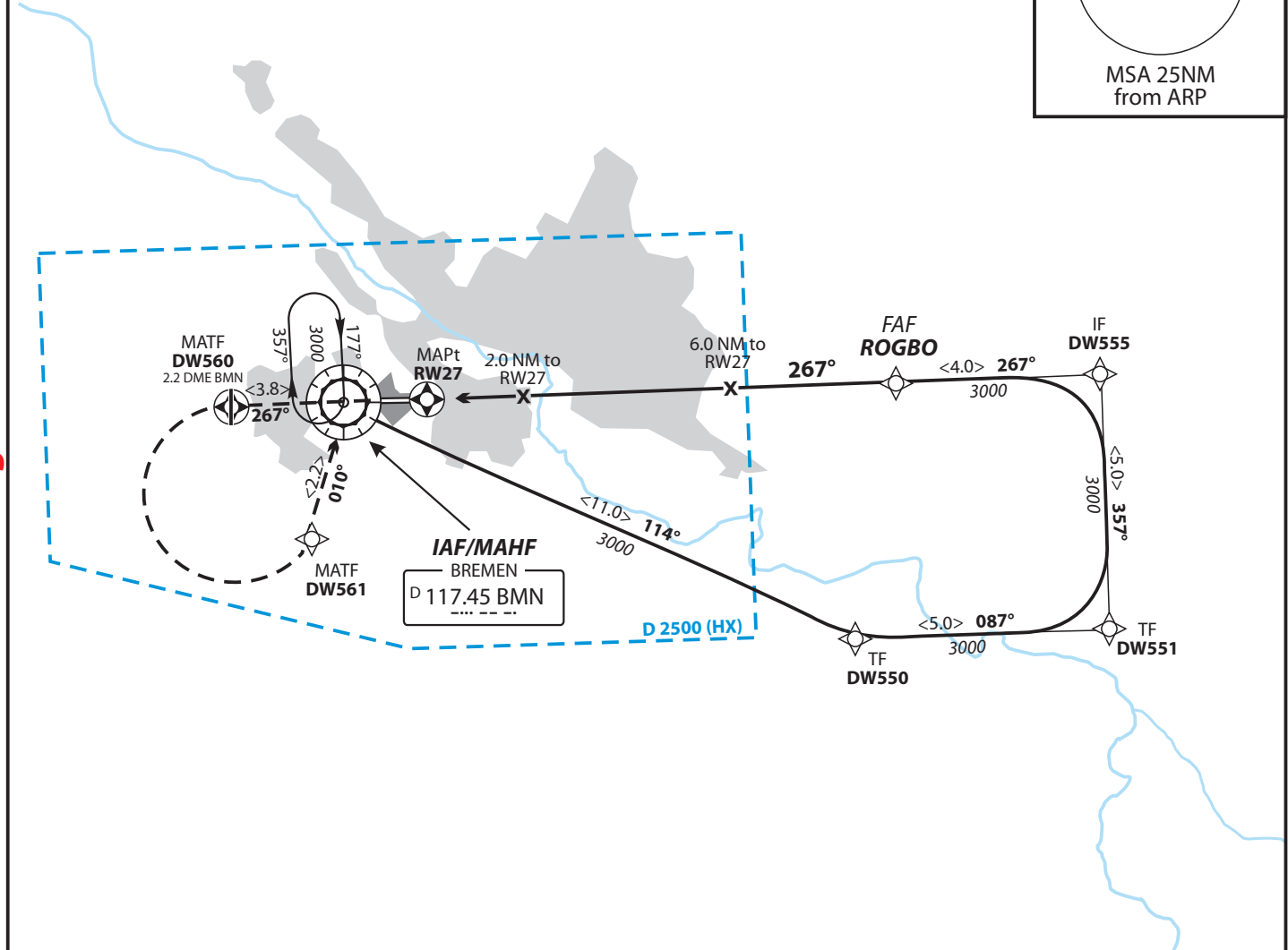
ATIS	120.120	BREMEN RADAR DIRECTOR	125.650 125.850	BREMEN TOWER GROUND	120.320 121.750	Apt Elev 14'
------	---------	-----------------------	--------------------	---------------------	--------------------	------------------------

BARO-VNAV OPERATIONS NOT AUTHORIZED BELOW -15°C.

BEARINGS ARE MAGNETIC ALTITUDES, ELEVATIONS AND HEIGHTS IN ft



Do not use for real life navigation



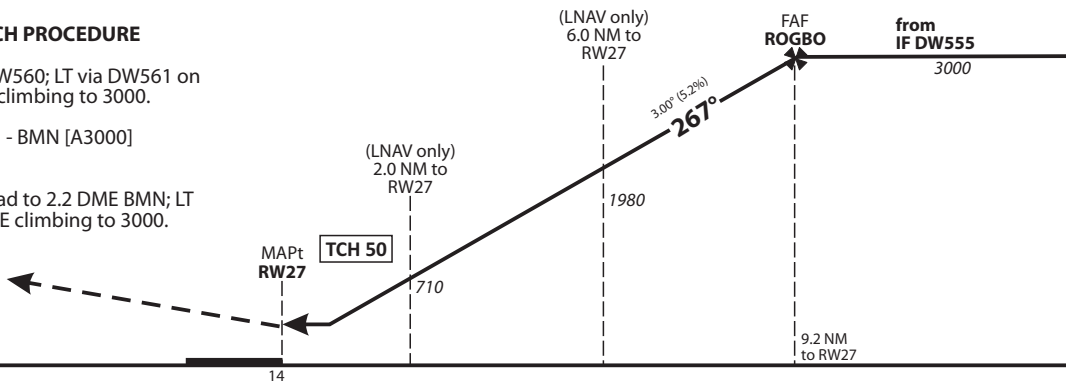
MISSED APPROACH PROCEDURE RNAV (GPS)

On track 267° to DW560; LT via DW561 on track 010° to BMN climbing to 3000.

DW560[L] - DW561 - BMN [A3000]

NON-RNAV

Climb straight ahead to 2.2 DME BMN; LT to BMN DVOR/DME climbing to 3000.



Revision: 2009-11-19 - CHANGES: BMN VOR position, procedure.

OCA (OCH)	A	B	C	D
LNAV	440 (430)	440 (430)	440 (430)	440 (430)
LNAV/VNAV	400 (380)	400 (380)	400 (380)	400 (380)

DIST THR / RW27	2	3	4	5	6	7	8	9
ALTITUDE	710	1020	1340	1660	1980	2300	2620	2930

Timing not authorized for defining the MAPt.

GS	kt	80	100	120	140	160	180
ROGBO - RW27 (9.2 NM)	MIN:SEC	6:54	5:31	4:36	3:57	3:27	3:04
Rate of descent (5.2%)	ft / MIN	420	530	640	740	850	960