

VATSIM Germany GPS / FSM RNAV Arrival Chart

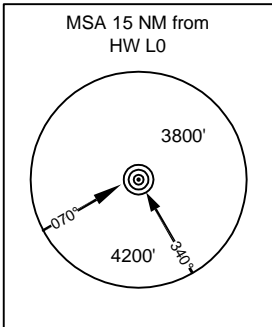
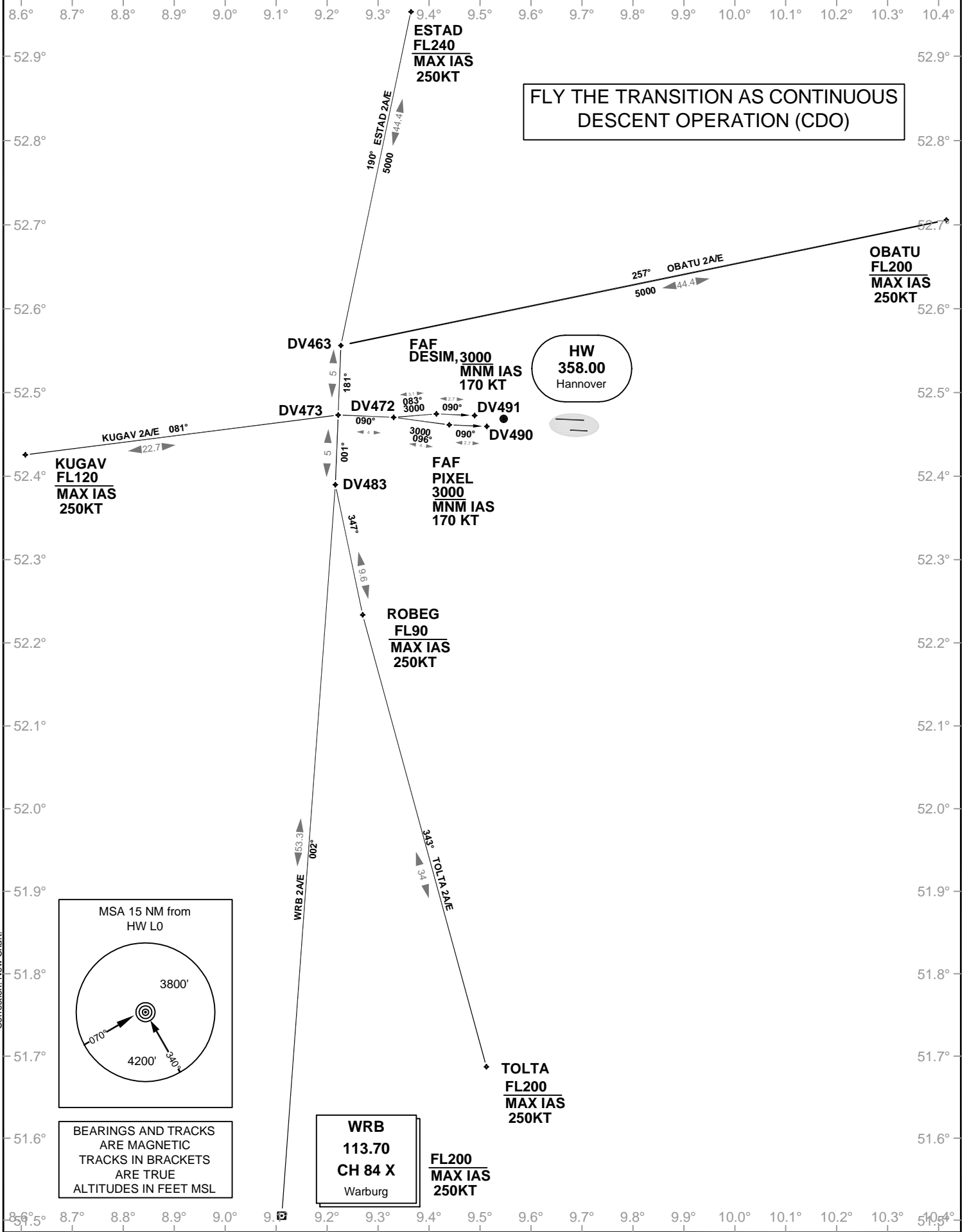
Hannover EDDV

Transition Altitude: 5000 ft.

VAR: 2° E

ATIS 132.120
Ground 121.950
Tower 120.170
Bremen Radar 131.320

TRANSITION (CDO) RWY 09R/L



BEARINGS AND TRACKS
ARE MAGNETIC
TRACKS IN BRACKETS
ARE TRUE
ALTITUDES IN FEET MSL

WRB
113.70
CH 84 X
Warburg

FL200
MAX IAS
250KT