

VATSIM Germany RNAV (GPS, DME/DME, DME/DME/IRU)

Hannover EDDV

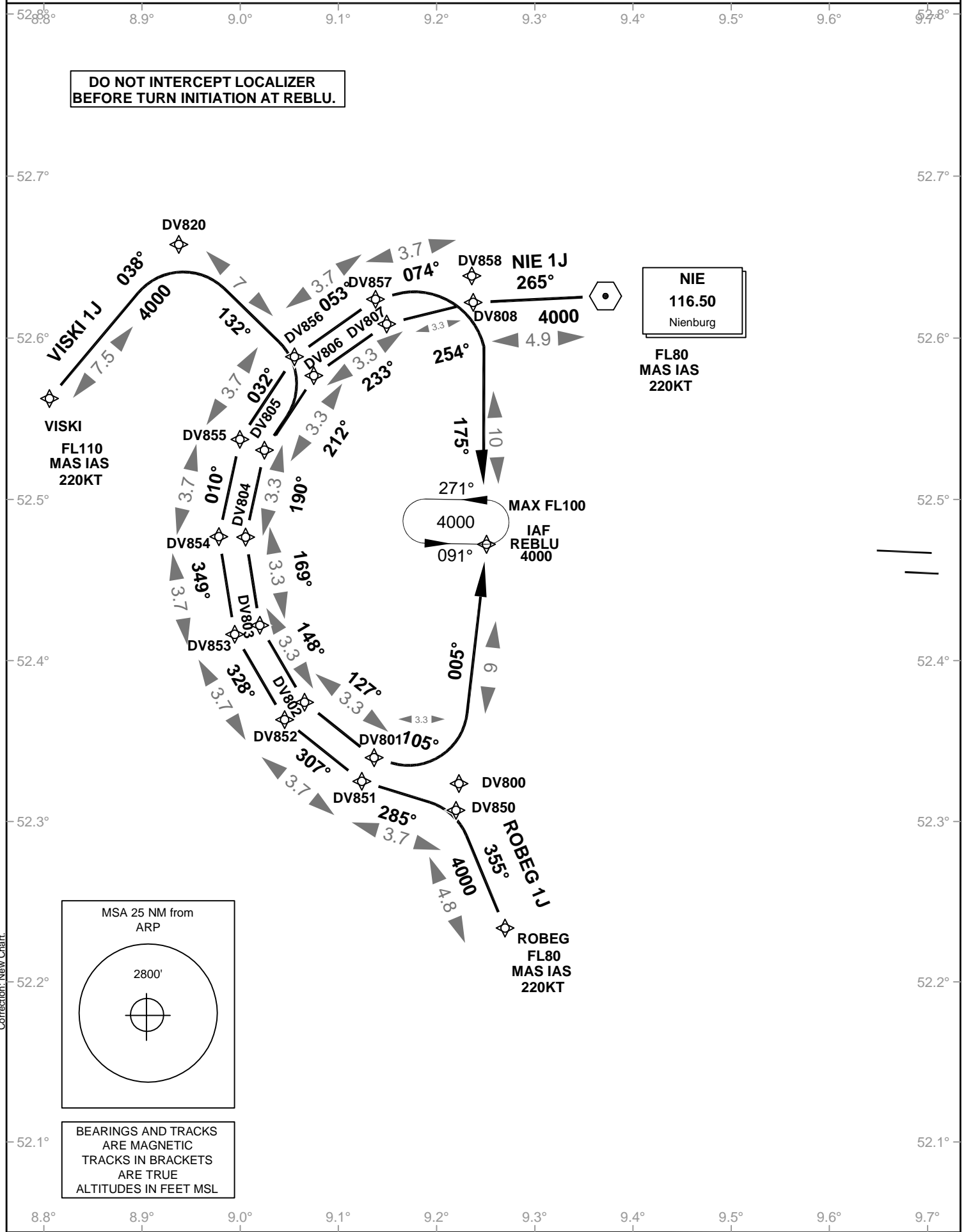
Transition Altitude: 5000 ft.

ATIS 132.120
Ground 121.950
Tower 120.170
Bremen Radar 131.320

STANDARD ARRIVAL RWY 09R/L

VAR: 2° E

**DO NOT INTERCEPT LOCALIZER
BEFORE TURN INITIATION AT REBLU.**



Correction: New Chart.