

# VATSIM Germany Instrument Approach Chart

**Hannover  
EDDV  
RNP  
RWY 27R**

Elevation: 183

ATIS 132.120

Director 119.600

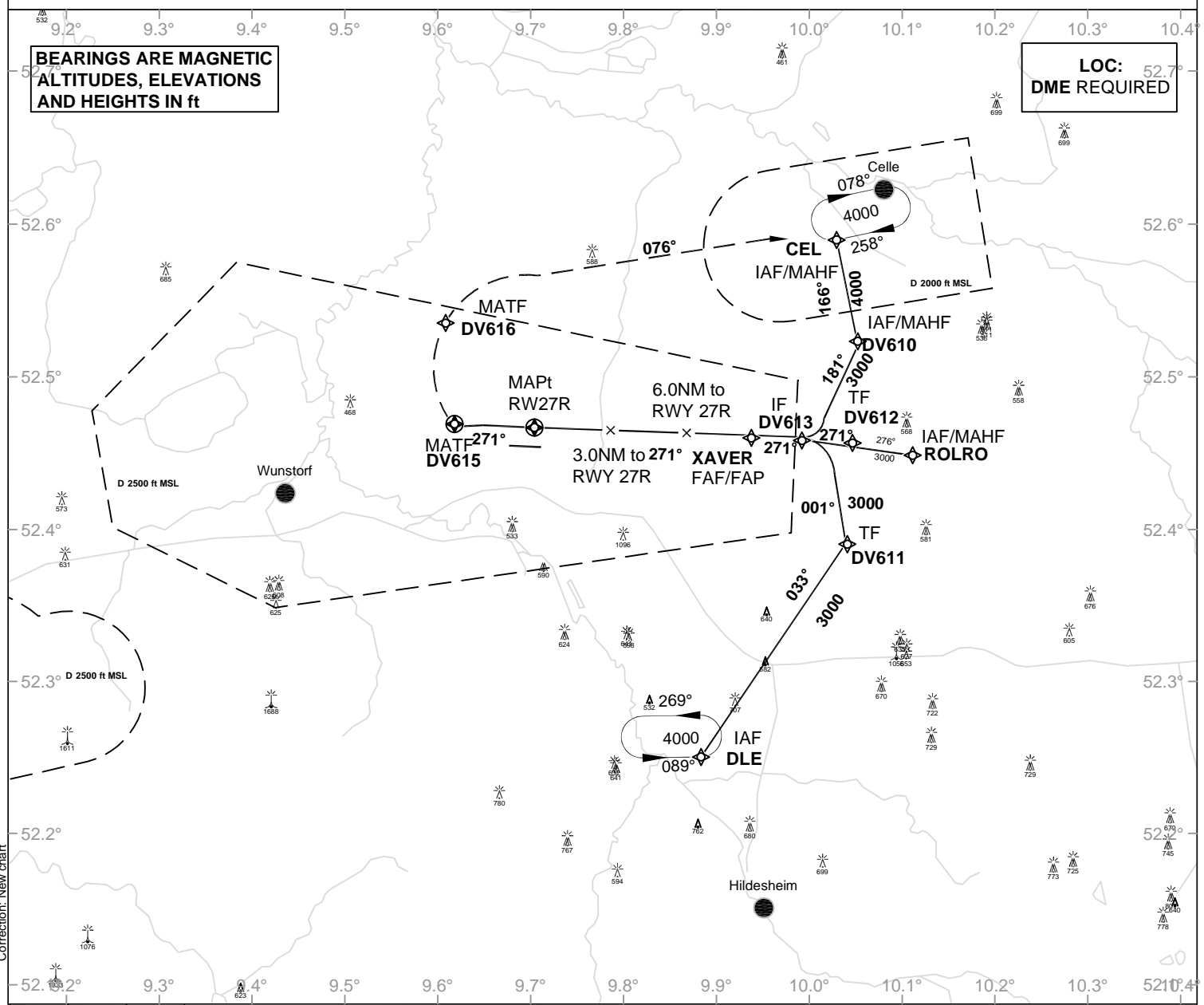
Bremen Radar 131.320

Tower 120.170

VAR: 2° E

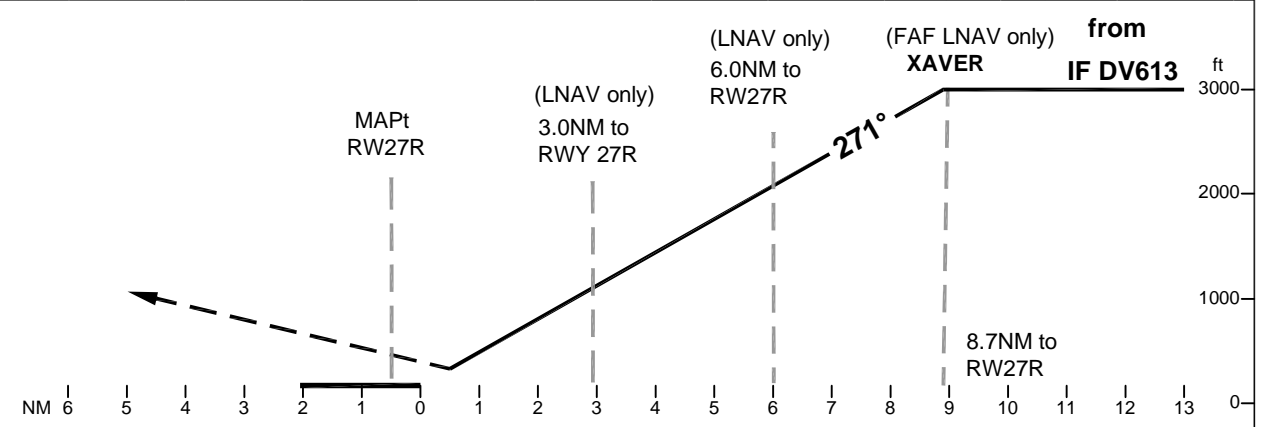
**BEARINGS ARE MAGNETIC  
ALTITUDES, ELEVATIONS  
AND HEIGHTS IN ft**

**LOC: 52.7°  
DME REQUIRED**



Correction: New chart

OCA (OCH)	LNAV	LNAV VNAV
A	670 (500)	570 (400)
B	670 (500)	570 (400)
C	670 (500)	570 (400)
D	670 (500)	570 (400)
E		
LARGE AC		



**MISSED APPROACH:** Climb on track 271° to DV615; RT via DV616 on track 076° to CEL to 4000.

DIST THR	2	3	4	5	6	7	8	GS	kt	80	100	120	140	160	180
ALTITUDE	860	1180	1500	1820	2130	2450	2770	XAVER - RW27R (8.7NM)	MIN:SEC	6:32	5:13	4:21	3:44	3:16	2:54
								Rate of descent (5.2%)	ft / MIN	420	530	640	740	850	960

LOC-DME: Timing not authorized for defining the MAPt