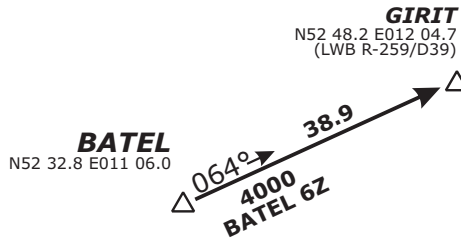
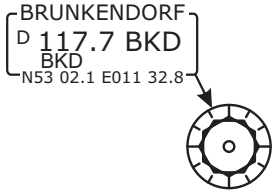


# RWY 09R ARRIVALS

**SPEED RESTRICTION**  
 MAX 250 KT below FL100  
 or as by ATC  
 Not applicable within airspace C.

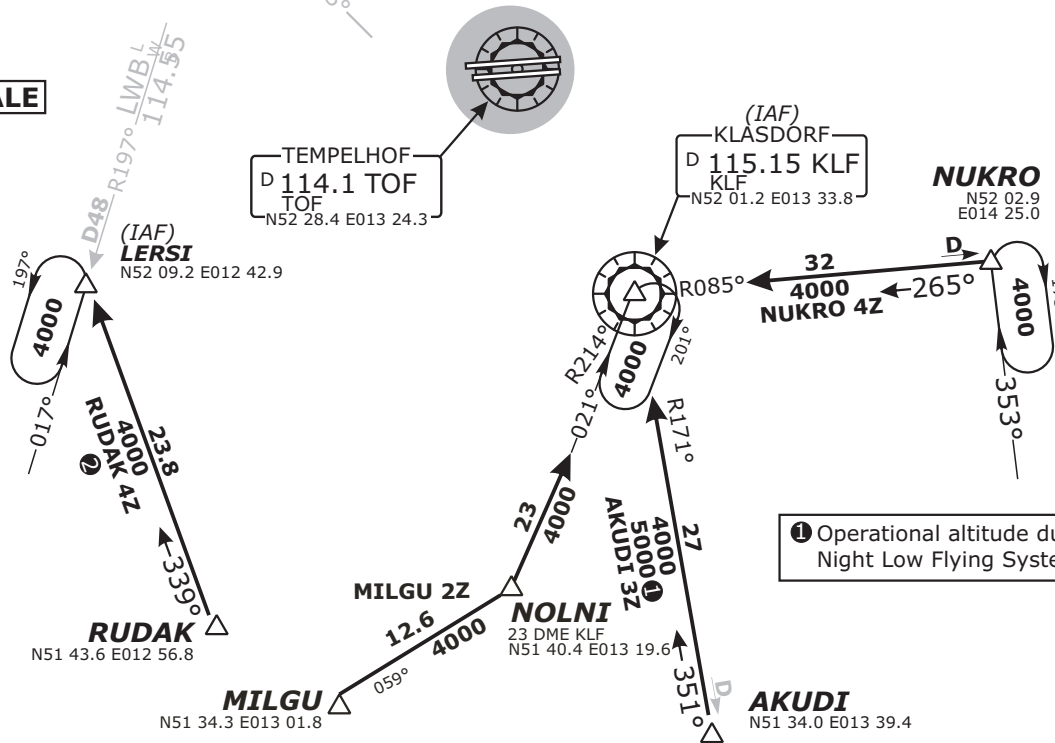
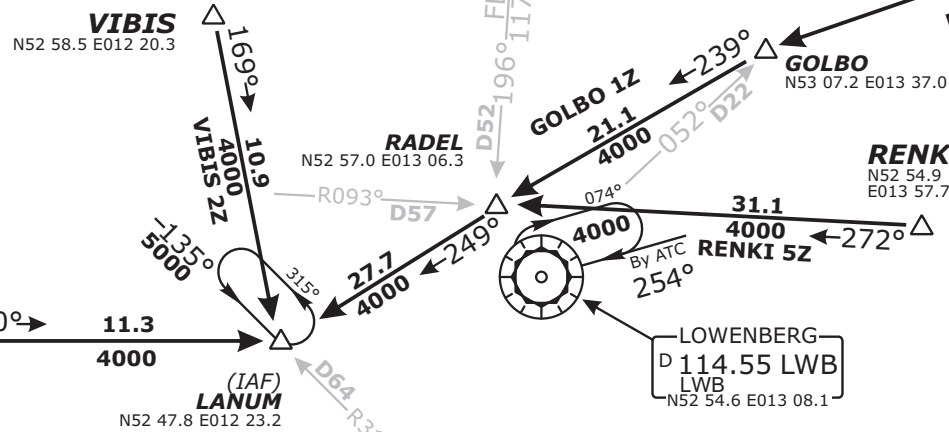


**NOT TO SCALE**

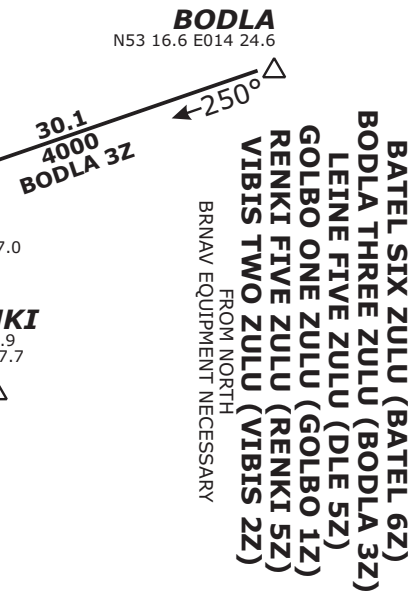
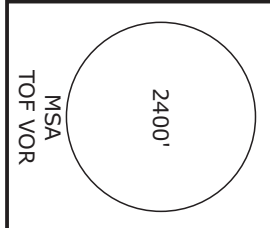
**VERTICAL PLANNING INFORMATION**  
 Pilots should plan for possible descent clearance as follows:

- BATEL 6Z, VIBIS 2Z:** at or below **FL120** by LANUM.
- BODLA 3Z, RENKI 5Z, GOLBO 1Z:** at or below **FL120** by RADEL.
- AKUDI 3Z, MILGU 2Z:** at or below **FL100** by KLF.
- NUKRO 4Z:** at or below **FL140** by NUKRO, at or below **FL100** by KLF.
- RUDAK 3Z:** at or below **FL100** by LERSI.

**ACTUAL DESCEND CLEARANCE WILL BE AS DIRECTED BY ATC.**



① Operational altitude due to Night Low Flying System



BRNAV EQUIPMENT NECESSARY



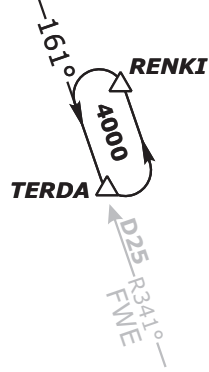
BRNAV EQUIPMENT NECESSARY

<b>Radar:</b>	Bremen Radar 123.220	<b>Tower:</b>	119.57
<b>Arrival:</b>	Bremen Radar 119.700	<b>Ground:</b>	121.95
<b>Director:</b>	Berlin Director 121.120	<b>ATIS:</b>	126.03

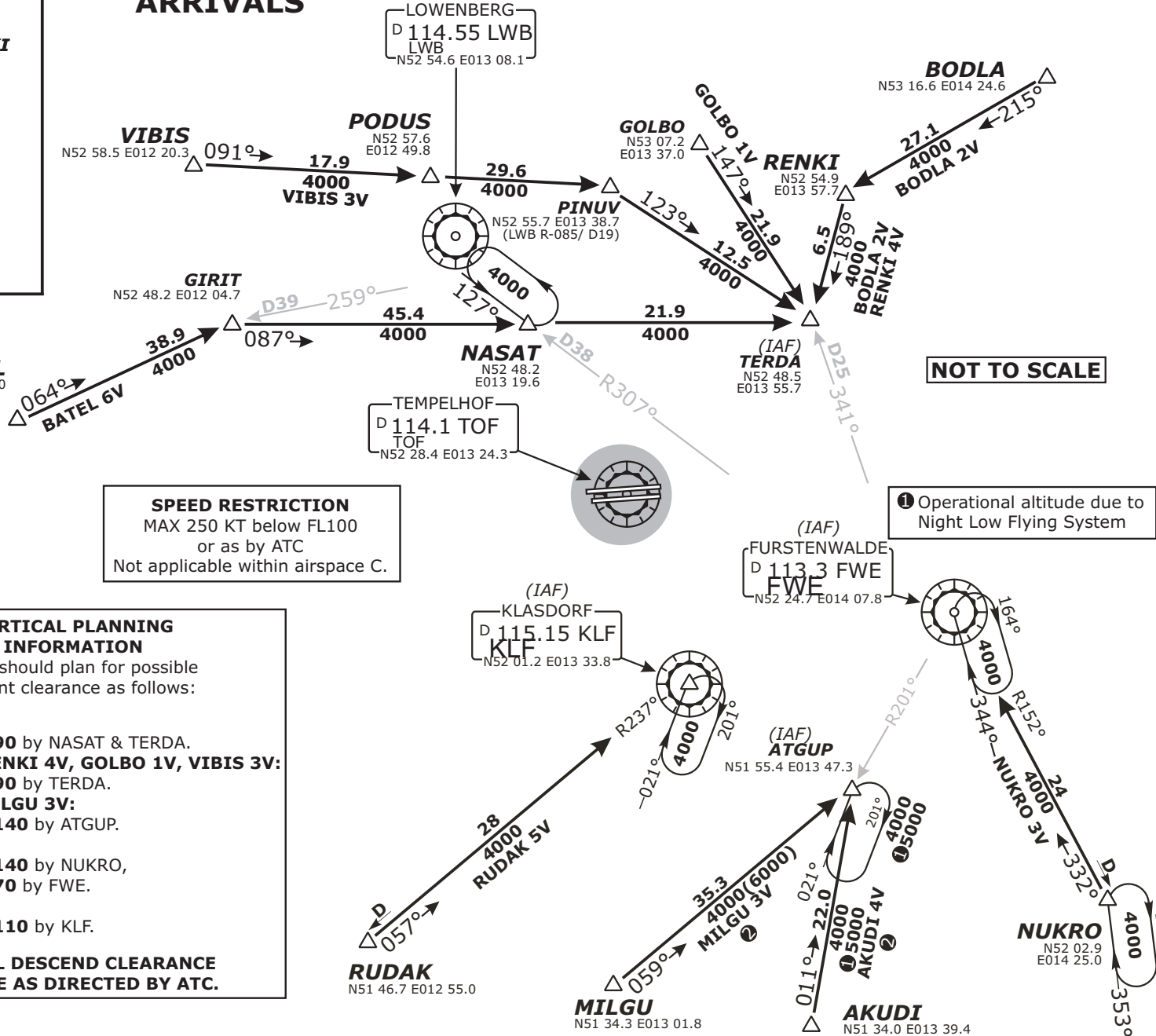
Trans level: by ATC  
 Trans alt: 5000'  
 1. Remain on TWR frequency until passing altitude 2000 ft, then contact Bremen Radar

**Valid for flight simulation use only - do not use for real life navigation**

### HOLDING OVER TERDA



## RWY 27L ARRIVALS



**SPEED RESTRICTION**  
 MAX 250 KT below FL100  
 or as by ATC  
 Not applicable within airspace C.

**NOT TO SCALE**

① Operational altitude due to  
 Night Low Flying System

### VERTICAL PLANNING INFORMATION

Pilots should plan for possible descent clearance as follows:

- BATEL 6V:**  
at or below **FL90** by NASAT & TERDA.
- BODLA 2V, RENKI 4V, GOLBO 1V, VIBIS 3V:**  
at or below **FL90** by TERDA.
- AKUDI 4V, MILGU 3V:**  
at or below **FL140** by ATGUP.
- NUKRO 3V:**  
at or below **FL140** by NUKRO,  
at or below **FL70** by FWE.
- RUDAK 5V:**  
at or below **FL110** by KLF.

**ACTUAL DESCEND CLEARANCE  
WILL BE AS DIRECTED BY ATC.**

**BATEL SIX VICTOR (BATEL 6V)**  
**BODLA TWO VICTOR (BODLA 2V)**  
**GOLBO ONE VICTOR (GOLBO 1V)**  
**RENKI FOUR VICTOR (RENKI 4V)**  
**VIBIS THREE VICTOR (VIBIS 3V)**

**AKUDI FOUR VICTOR (AKUDI 4V)**  
**NUKRO THREE VICTOR (NUKRO 3V)**  
**RUDAK FIVE VICTOR (RUDAK 5V)**  
**MILGU THREE VICTOR (MILGU 3V)**

FROM NORTH  
BRNAV EQUIPMENT NECESSARY

② BRNAV equipment necessary.

**EDDI/THF TEMPELHOF**

Radar:	Bremen Radar	123.220	Tower:	119.57
Arrival:	Bremen Radar	119.700	Ground:	121.95
Director:	Berlin Director	126.420	ATIS:	126.03
		121.120		

Trans level: by ATC  
 Trans alt: 5000'  
 1. Remain on TWR frequency until passing  
 altitude 2000 ft, then contact Bremen Radar

