

Valid for flight simulation use only - do not use for real life navigation

APP CHART NO.1  
Revision 14 MAY 08  
Effective 23 NOV 06

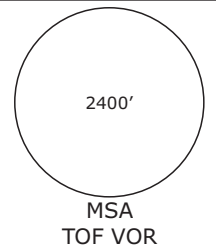
# BERLIN, GERMANY ILS or LOC Rwy 09R

## EDDI/THF TEMPELHOF

**Radar:** Bremen Radar 123.220  
**Arrival:** Bremen Radar 119.700  
**Director:** Berlin Director 121.120

**Tower:** 119.57  
**Ground:** 121.95  
**ATIS:** 126.03

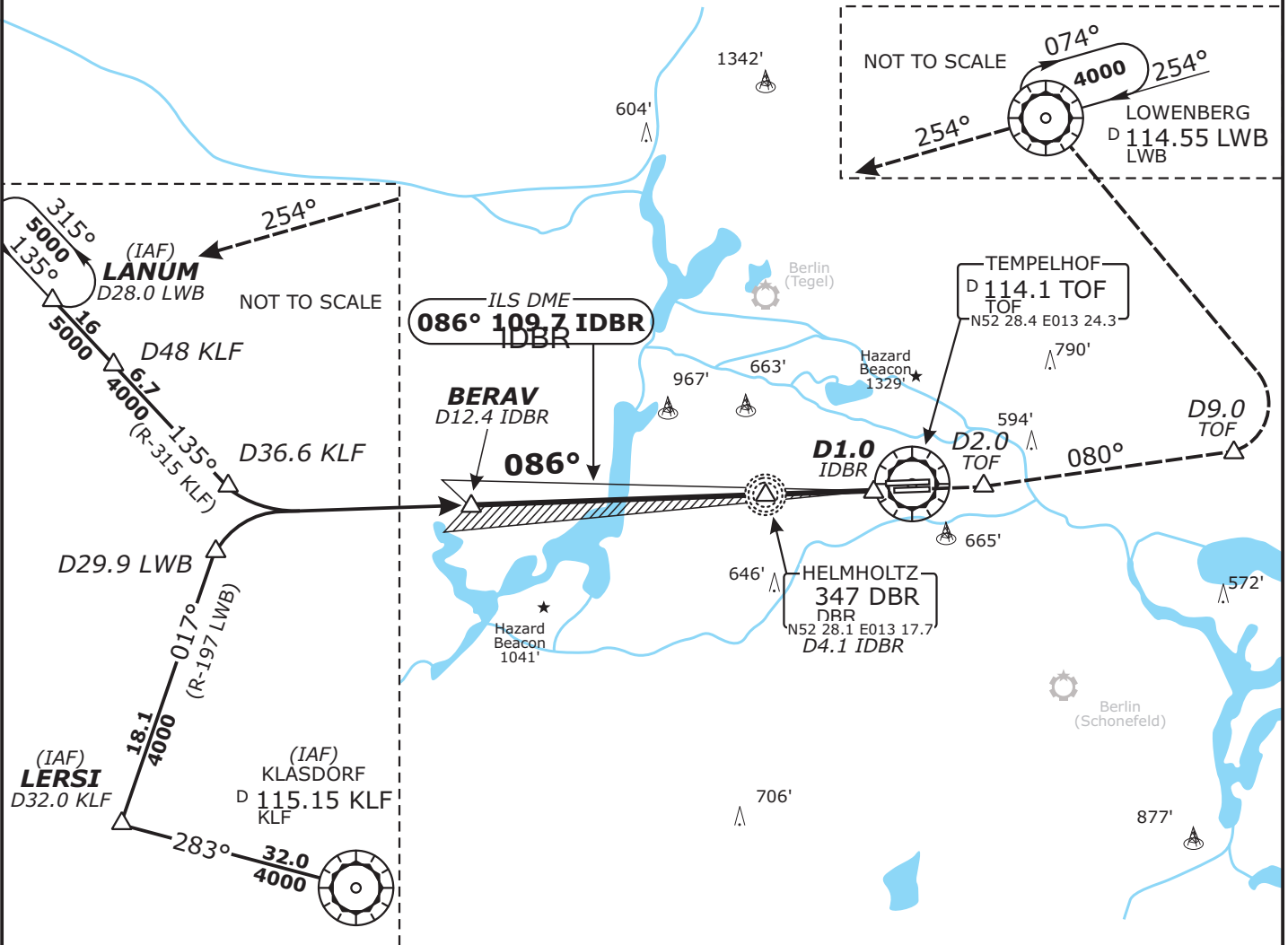
Trans level: by ATC  
Trans alt: 5000'  
1. Remain on TWR frequency until passing altitude 2000 ft, then contact Bremen Radar



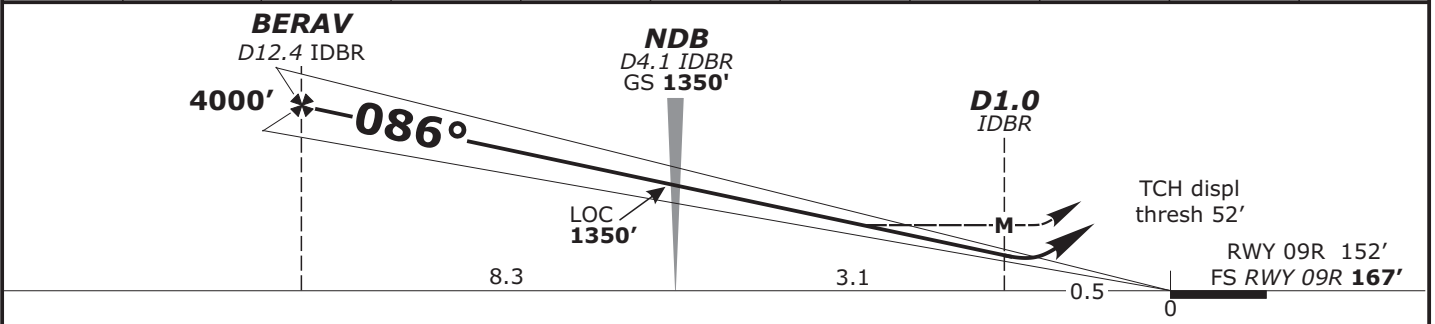
LOC IDBR <b>109.7</b>	Final Apch Crs <b>086°</b>	GS NDB <b>1350' (1183')</b>	ILS DA(H) Refer to Minimums	Apt Elev 167' FS: RWY 167' RWY 152'
--------------------------	-------------------------------	--------------------------------	--------------------------------	---

**MISSED APCH:** Climb on rwy track to MAX 3000'. At D2.0 East of TOF continue climb to 5000' and turn LEFT on track 080°. At D9.0 TOF turn LEFT via LWB VOR to LANUM.

LOC: DME REQUIRED.



LOC (GS out)	IDBR DME	12.0	10.0	9.0	8.0	7.0	6.0	5.0	4.0	3.0
	ALTITUDE	3870'	3230'	2920'	2600'	2280'	1960'	1640'	1320'	690'



**Flight Simulator-OPS**

STRAIGHT-IN LANDING RWY 09R	
<b>ILS</b> DA(H) A: 407' (240') C: 427' (260') B: 417' (250') D: 437' (270')	<b>LOC (GS out)</b> MDA(H) 640' (473')
A	RVR 1000m
B	RVR 600m
C	RVR 1200m
D	RVR 650m
	RVR 1600m

Gnd speed-Kts	70	90	100	120	140	160
ILS GS 3.00° or LOC Descent Gradient 5.2%	377	484	538	646	753	861
MAP at D1.0 IDBR						

CHANGES: Communications

Valid for flight simulation use only - do not use for real life navigation

APP CHART NO.2  
Revision 14 MAY 08  
Effective 29 SEP 05

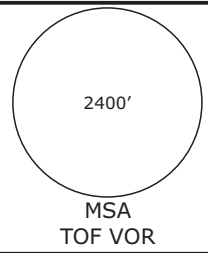
# BERLIN, GERMANY ILS or LOC Rwy 27L

## EDDI/THF TEMPELHOF

**Radar:** Bremen Radar 123.220  
**Arrival:** Bremen Radar 119.700  
**Director:** Berlin Director 121.120

**Tower:** 119.57  
**Ground:** 121.95  
**ATIS:** 126.03

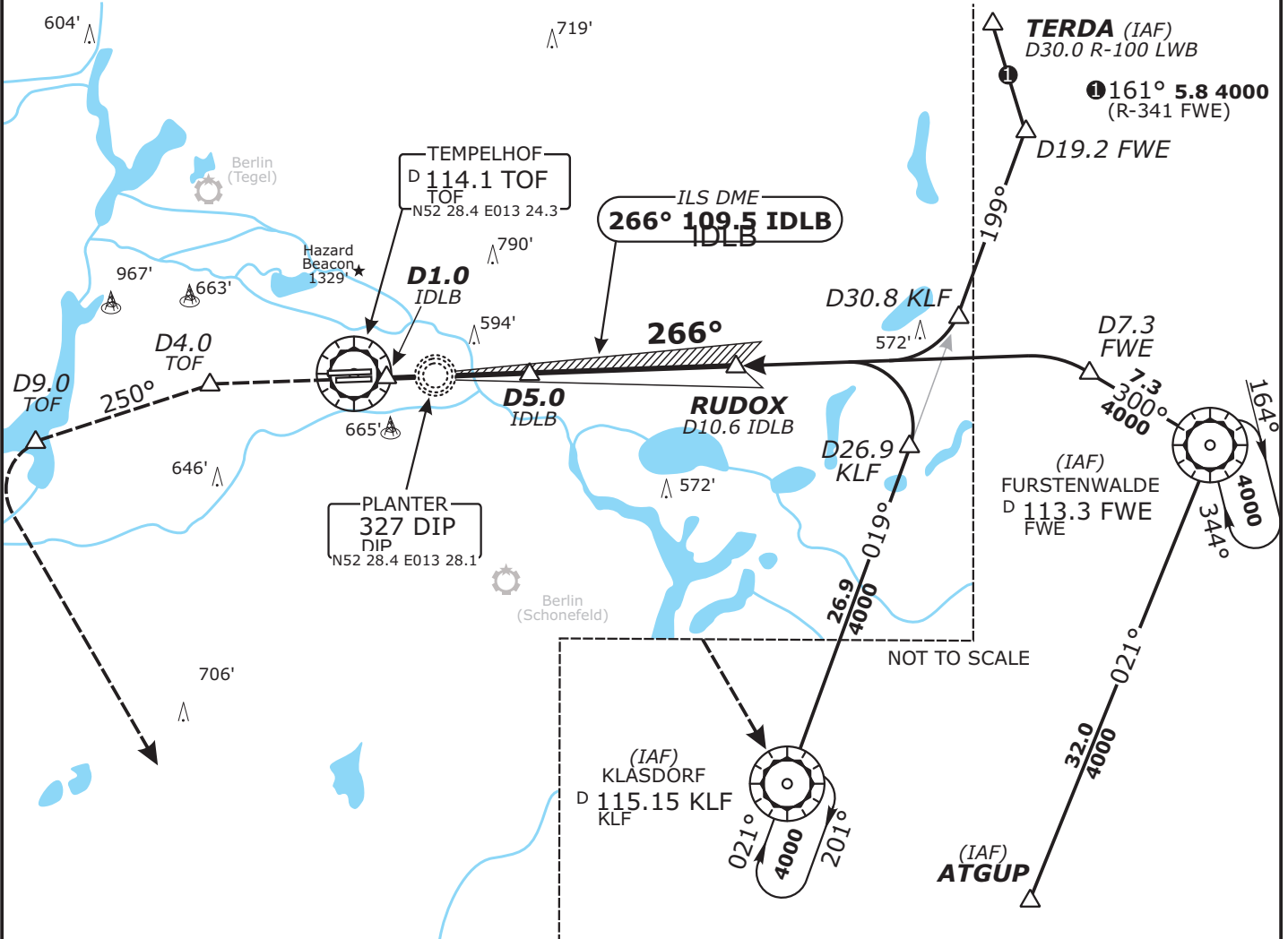
Trans level: by ATC  
Trans alt: 5000'  
1. Remain on TWR frequency until passing altitude 2000 ft, then contact Bremen Radar



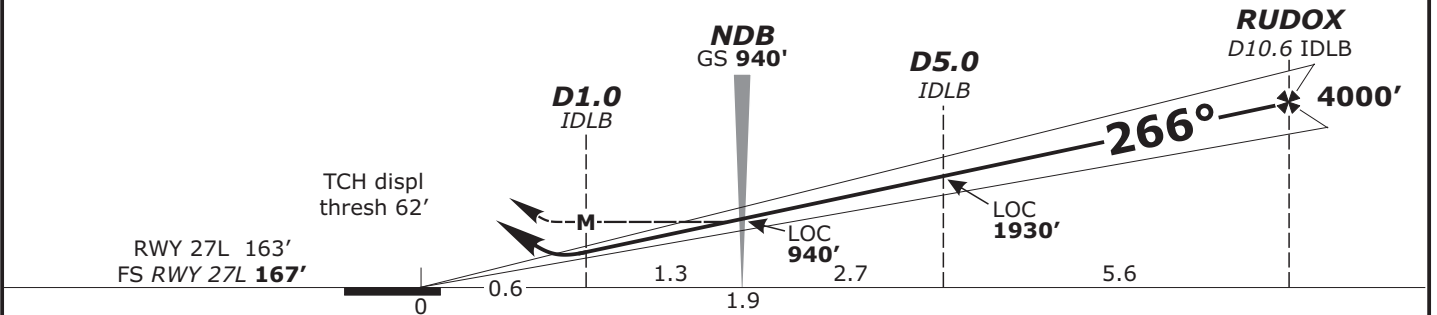
LOC IDLB <b>109.5</b>	Final Apch Crs <b>266°</b>	GS NDB <b>940'</b> (773')	ILS DA(H) Refer to Minimums	Apt Elev 167' FS: RWY 167' RWY 163'
--------------------------	-------------------------------	------------------------------	--------------------------------	---

**MISSED APCH:** Climb on rwy track to MAX 3000'. At D4.0 West of TOF continue climb to 4000' and turn LEFT on track 250°. At D9.0 TOF turn LEFT KLF VOR.

LOC: DME REQUIRED.



LOC (GS out)	IDIB DME	2.0	3.0	4.0	5.0	6.0	7.0	8.0	9.0	10.0
	ALTITUDE	820'	1190'	1560'	1930'	2310'	2680'	3050'	3420'	3790'



<b>Flight Simulator-OPS</b>		<b>STRAIGHT-IN LANDING RWY 27L</b>									
<b>ILS</b> DA(H) A: 420' (253') C: 444' (277') B: 432' (265') D: 456' (289')		<b>LOC (GS out)</b> MDA(H) 580' (413')		Gnd speed-Kts		70	90	100	120	140	160
A		RVR 900m		ILS GS 3.50° or LOC Descent Gradient 6.1%		439	564	627	752	877	1003
B		RVR 1000m		MAP at D1.0 IDLB							
C		RVR 650m									
D		RVR 1400m									

CHANGES: Communications

Valid for flight simulation use only - do not use for real life navigation

APP CHART NO.3  
Revision 14 MAY 08  
Effective 23 NOV 06

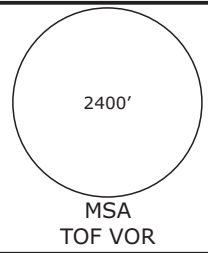
# BERLIN, GERMANY VOR Rwy 09L

## EDDI/THF TEMPELHOF

**Radar:** Bremen Radar 123.220  
**Arrival:** Bremen Radar 119.700  
**Director:** Berlin Director 121.120

**Tower:** 119.57  
**Ground:** 121.95  
**ATIS:** 126.03

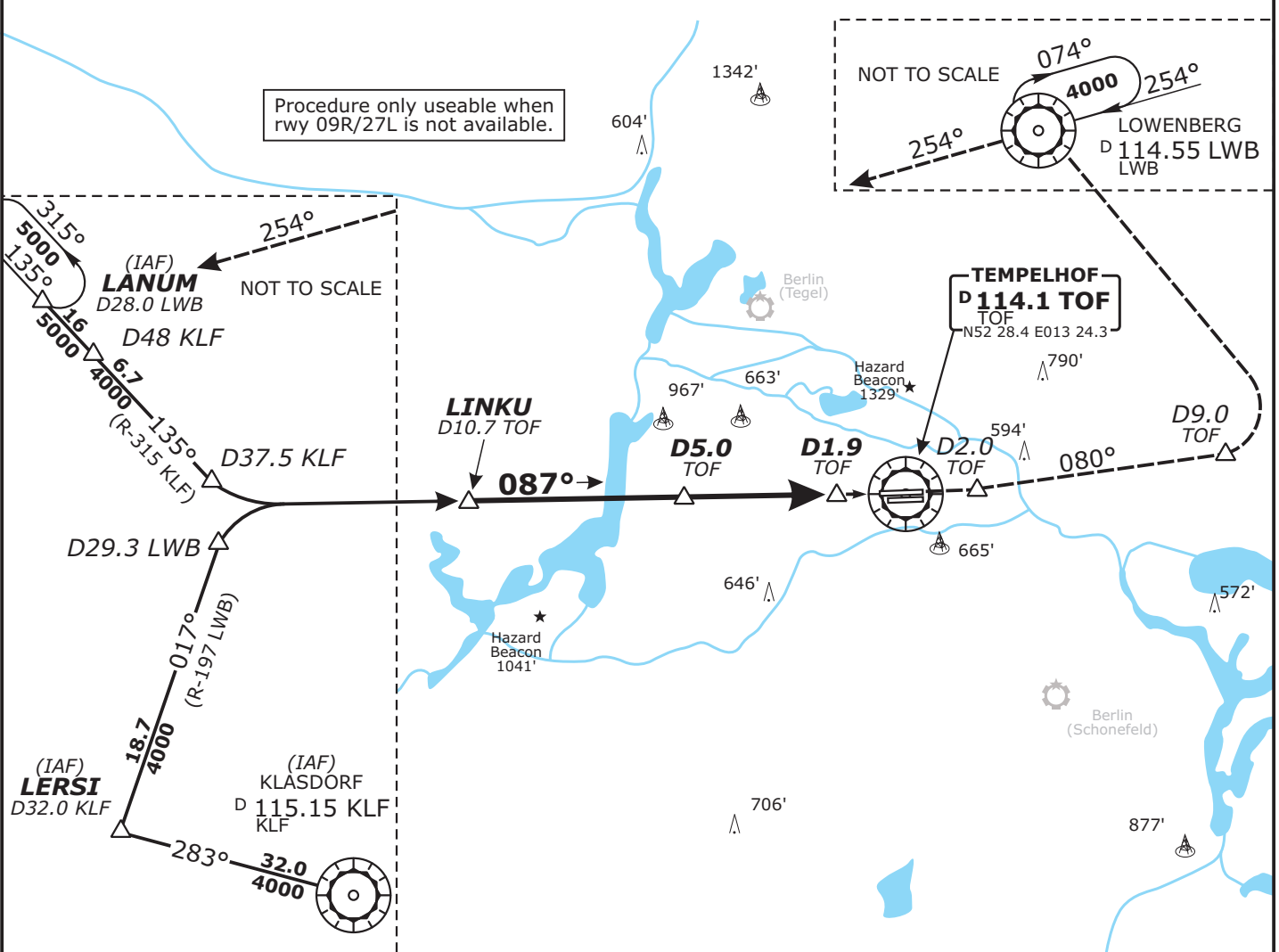
Trans level: by ATC  
Trans alt: 5000'  
1. Remain on TWR frequency until passing altitude 2000 ft, then contact Bremen Radar



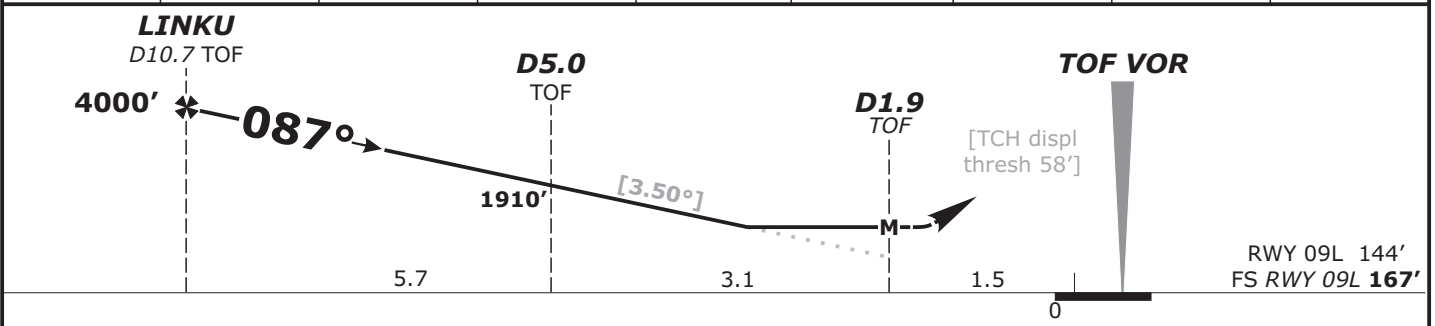
VOR TOF <b>114.1</b>	Final Apch Crs <b>087°</b>	Minimum Alt <b>LINKU</b> 4000' (3833')	MDA(H) <b>840'</b> (676')	Apt Elev 167' FS: RWY 167' RWY 144'
-------------------------	-------------------------------	--	------------------------------	---

**MISSED APCH:** Climb on rwy track to MAX 3000'. At D2.0 East of TOF continue climb to 5000' and turn LEFT on track 080°. At D9.0 TOF turn LEFT via LWB VOR to LANUM.

1. LOC: **DME REQUIRED.**      2. Final approach track offset 3° from rwy centerline.



TOF DME	10.0	9.0	8.0	7.0	6.0	5.0	4.0	3.0
ALTITUDE	3770'	3390'	3020'	2650'	2880'	1910'	1540'	1170'



<b>Flight Simulator-OPS</b> STRAIGHT-IN LANDING RWY 09L  MDA(H) <b>840'</b> (676')  3000m	Gnd speed-Kts	70	90	100	120	140	160
	Descend Gradient 6.10% or Descent angle [3.50°]	434	557	619	743	867	991
	MAP at D1.9 TOF						

CHANGES: Communications

Valid for flight simulation use only - do not use for real life navigation

APP CHART NO.4  
Revision 14 MAY 08  
Effective 29 SEP 05

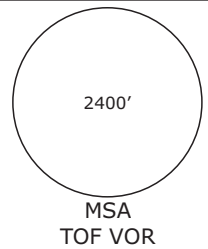
# BERLIN, GERMANY VOR Rwy 27R

## EDDI/THF TEMPELHOF

**Radar:** Bremen Radar 123.220  
**Arrival:** Bremen Radar 119.700  
**Director:** Berlin Director 121.120

**Tower:** 119.57  
**Ground:** 121.95  
**ATIS:** 126.03

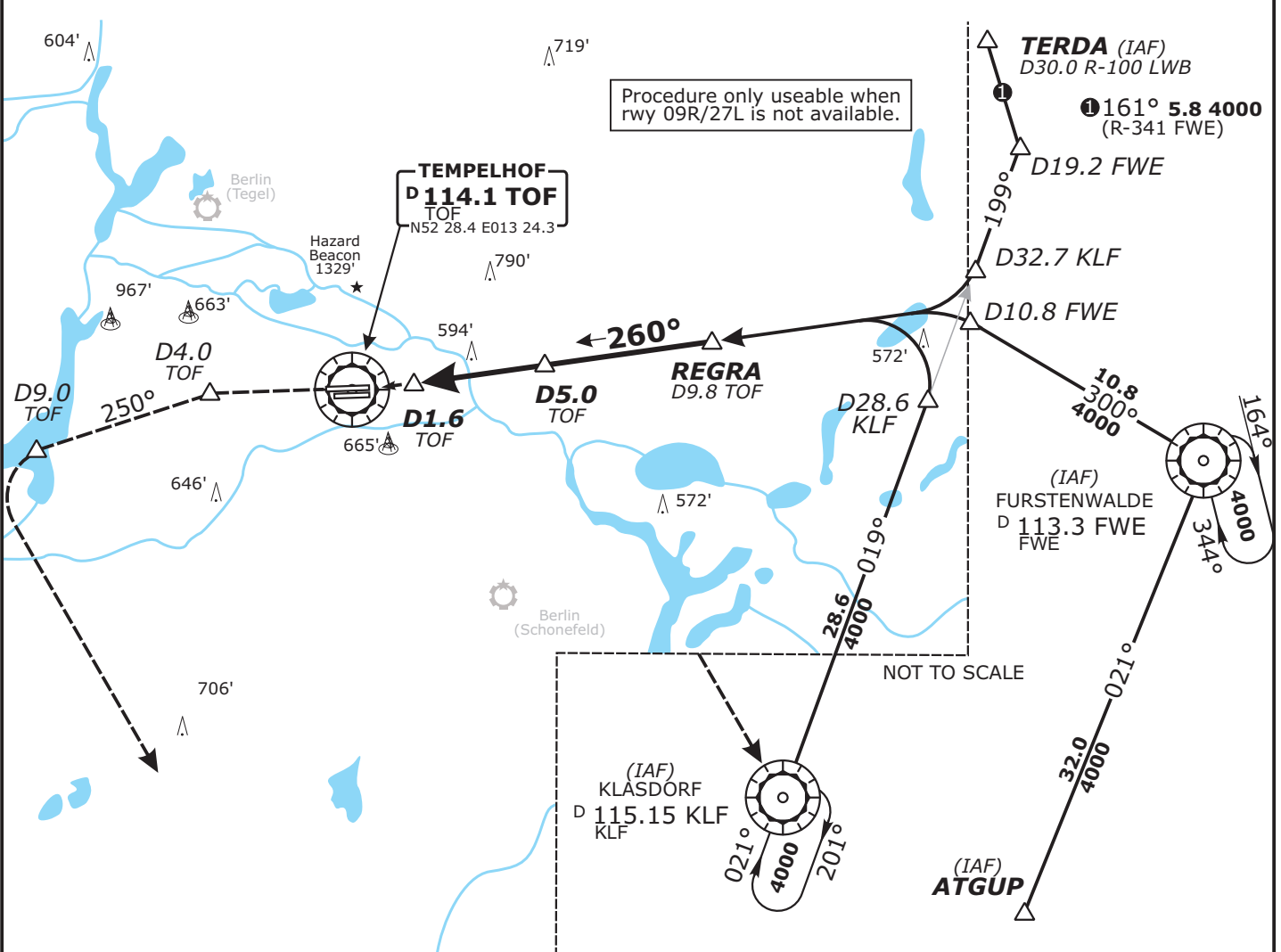
Trans level: by ATC  
Trans alt: 5000'  
1. Remain on TWR frequency until passing altitude 2000 ft, then contact Bremen Radar



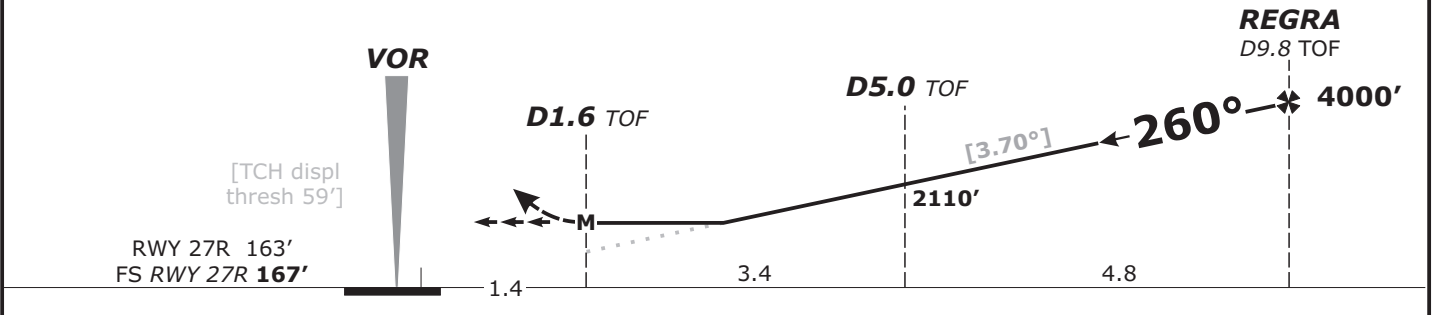
VOR TOF <b>114.1</b>	Final Apch Crs <b>260°</b>	Minimum Alt <b>REGRA</b> <b>4000'</b> (3833')	MDA(H) <b>840'</b> (673')	Apt Elev 167' FS: RWY 167' RWY 163'
-------------------------	-------------------------------	---	------------------------------	---

**MISSED APCH:** Climb on rwy track to MAX 3000'. At D4.0 West of TOF continue climb to 4000' and turn LEFT on track 250°. At D9.0 TOF turn LEFT KLF VOR.

- LOC: **DME REQUIRED.**
- Final approach track offset 3° from rwy centerline.



TOF DME	2.0	3.0	4.0	5.0	6.0	7.0	8.0	9.0
ALTITUDE	930'	1320'	1720'	2110'	2500'	2890'	3280'	3680'



Flight Simulator-OPS	STRAIGHT-IN LANDING RWY 27R	Gnd speed-Kts	70	90	100	120	140	160
	MDA(H) <b>840'</b> (673')	Descend Gradient 6.50% or Descent angle [3.70°]	458	589	655	786	917	1048
		MAP at D1.6 TOF	3000m					

CHANGES: Communications

- A
- B
- C
- D