

VATSIM Germany

Standard Instrument Departure Chart

Hamburg
EDDH
SID
RWY 05

Designator	Route	After Take-Off		Remarks
		Climb to	Contact	
EKERN 8C	EKERN EIGHT CHARLIE Direct HOS (4.1 DME ALF) (Δ); on track 048° HOS to 7.2 DME ALF; LT, on R344 HAM to EKERN (Δ). GPS/FMS RNAV: [A500+] - HOS - DH152[L] - EKERN.	5000 ft	Bremen Radar 127.675	
LUB 9C	LÜBECK NINE CHARLIE Direct HOS (4.1 DME ALF) (Δ); RT; on R230 LUB to LUB (Δ). GPS/FMS RNAV: [A500+] - HOS[R] - LUB.			
AMLUH 8C	AMLUH EIGHT CHARLIE Direct to HOS (4.1 DME ALF) (Δ); on track 048° HOS to 5.2 DME ALF; RT, on R163 HAM to AMLUH (Δ). GPS/FMS RNAV: [A500+] - HOS - DH151[R] - AMLUH.			
RAMAR 3C	RAMAR THREE CHARLIE Direct HOS (4.1 DME ALF) (Δ); RT, on R230 LUB to 7.2 DME ALF; RT, on track 072° LYE to LYE (Δ); RT, on track 120° LYE to RAMAR(Δ). GPS/FMS RNAV: [A500+] - HOS[R] - DH154[R] - LYE[R] - RAMAR.			
IDEKO 5C	IDEKO FIVE CHARLIE On track 048° inbound HOS to 3.8 DME ALF; LT, on R296 HAM to intercept R064 LBV; on R064 LBV to LBV (Δ); LT, on R185 LBV to IDEKO (Δ). GPS/FMS RNAV: [A500+] - DH150[L] - DH153[L] - LBV[L] - IDEKO.		Bremen Radar 134.250	
BASUM 1C	BASUM ONE CHARLIE On track 048° inbound HOS to 3.8 DME ALF; LT, on R296 HAM to intercept R064 LBV; on R064 LBV to LBV (Δ); LT, on R206 LBV to BASUM (Δ). GPS/FMS RNAV: [A500+] - DH150[L] - DH153[L] - LBV[L] - BASUM.			
WSN 2C	WESER TWO CHARLIE On track 048° inbound HOS to 3.8 DME ALF; LT, on R296 HAM to intercept R064 LBV; on R064 LBV to LBV (Δ); LT, on R232 LBV to WSN (Δ). GPS/FMS RNAV: [A500+] - DH150[L] - DH153[L] - LBV[L] - WSN.			
LBV 1C	ELBE ONE CHARLIE On track 048° inbound HOS to 3.8 DME ALF; LT, on R296 HAM to intercept R064 LBV; on R064 LBV to LBV (Δ). GPS/FMS RNAV: [A500+] - DH150[L] - DH153[L] - LBV.			

Remain on TWR frequency until passing 2000, then contact Bremen Radar.

VATSIM Germany Standard Instrument Departure Chart

Hamburg EDDH

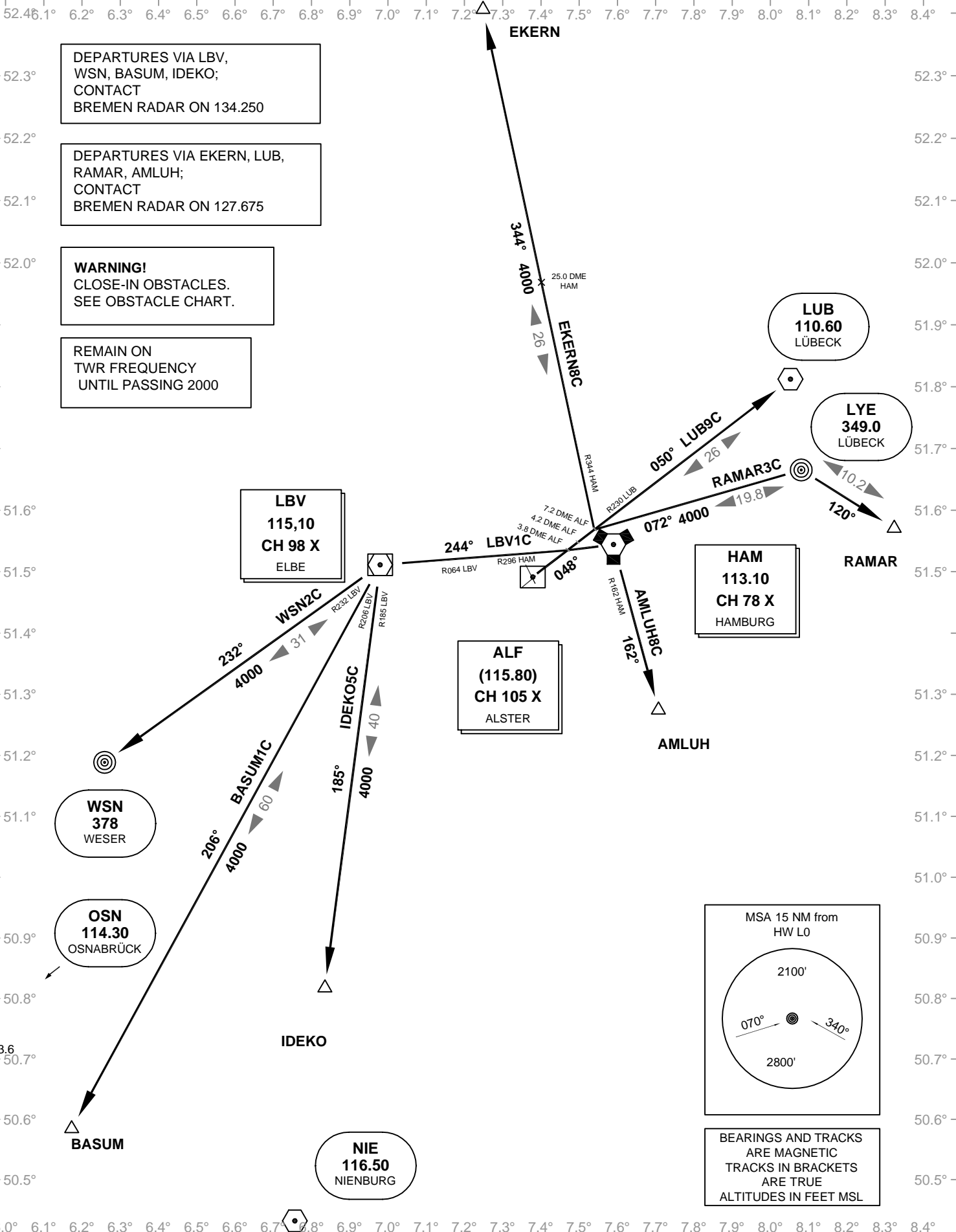
SID RWY 05

Transition Altitude: 5000 ft.

ATIS 124.320
Apron 121.700
Ground 121.800

Tower 126.850
Bremen Radar 127.675
Bremen Radar 134.250

VAR: 2°E



Corrections: ATIS Frequency