

VATSIM Germany Instrument Approach Chart

**Hamburg
EDDH
RNAV
RWY 33**

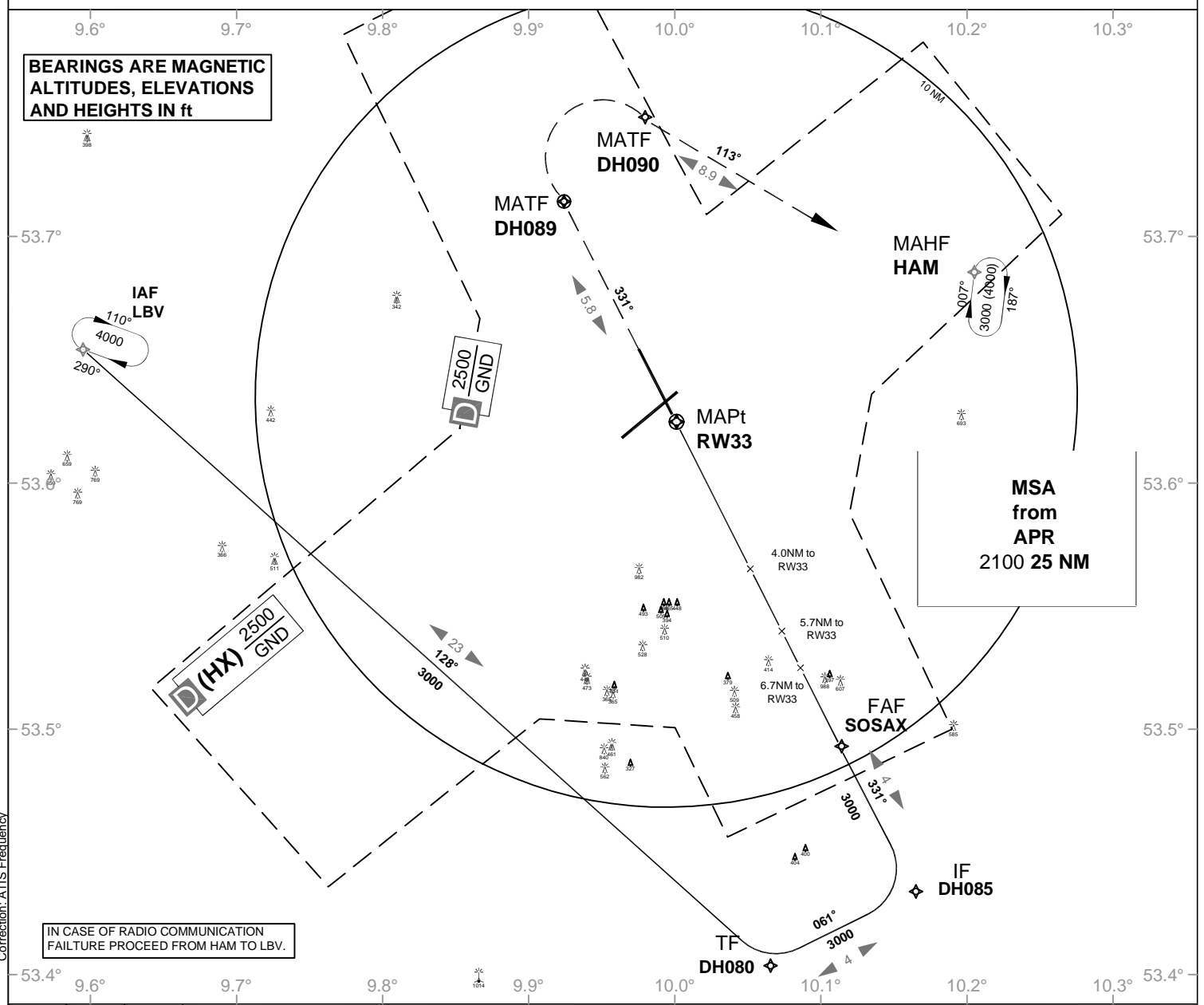
Elevation: 53

ATIS 124.320
Director 118.200
Bremen Radar 134.250
Bremen Radar 127.670

Ground 121.800
Apron 121.700
Tower 126.850

VAR: 2° E

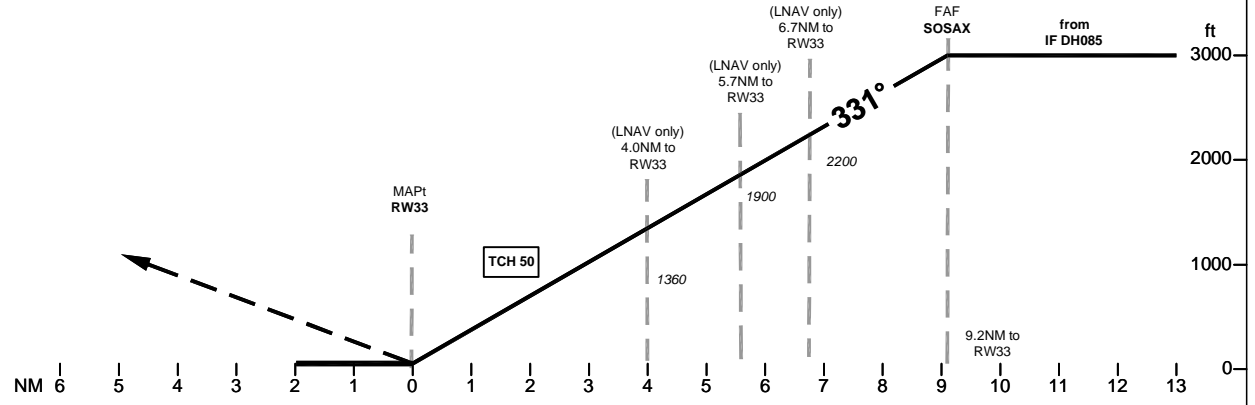
**BEARINGS ARE MAGNETIC
ALTITUDES, ELEVATIONS
AND HEIGHTS IN ft**



IN CASE OF RADIO COMMUNICATION FAILURE PROCEED FROM HAM TO LBV.

Correction: ATIS Frequency

| OCA (OCH) | ILS CAT I | LOC DME |
|----------------|-----------|-----------|
| CAT A | - | 480 (440) |
| CAT B | - | 480 (440) |
| CAT C | - | 480 (440) |
| CAT D | - | 480 (440) |
| CAT E | - | - |
| Large Aircraft | - | - |



MISSED APPROACH: Climb on track 331° to DH089; RT via DH090 on track 113° to HAM to 4000.

| | | | | | | | | | | |
|-----------|-----|------|------|------|------|------|------|------|--|--|
| DIST THR | 2 | 3 | 4 | 5 | 6 | 7 | 8 | 9 | | |
| ALTIMETER | 730 | 1050 | 1360 | 1680 | 2000 | 2320 | 2640 | 2960 | | |

| | | | | | | | |
|------------------------|----------|------|------|------|------|------|------|
| GS | kt | 80 | 100 | 120 | 140 | 160 | 180 |
| SOSAX - RW33 (9.2NM) | MIN:SEC | 6:54 | 5:31 | 4:36 | 3:57 | 3:27 | 3:04 |
| Rate of descent (5.2%) | ft / MIN | 420 | 530 | 640 | 740 | 850 | 960 |

Timing not authorized for defining the MAPt