

VATSIM Germany GPS/FMS RNAV Arrival Chart

Transition Altitude: 5000 ft.
VAR: 2° E

München Radar 126.175
Tower 121.150
Ground 121.750
Apron 121.900

ATIS 133.450

TRANSITION TO FINAL APPROACH RWY 10

Erfurt-Weimar
EDDE

For flight simulator use only. Not to be used for real world flight.

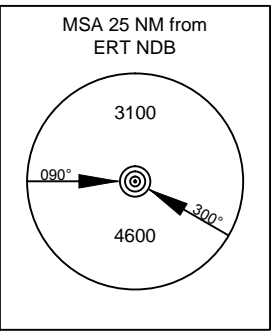
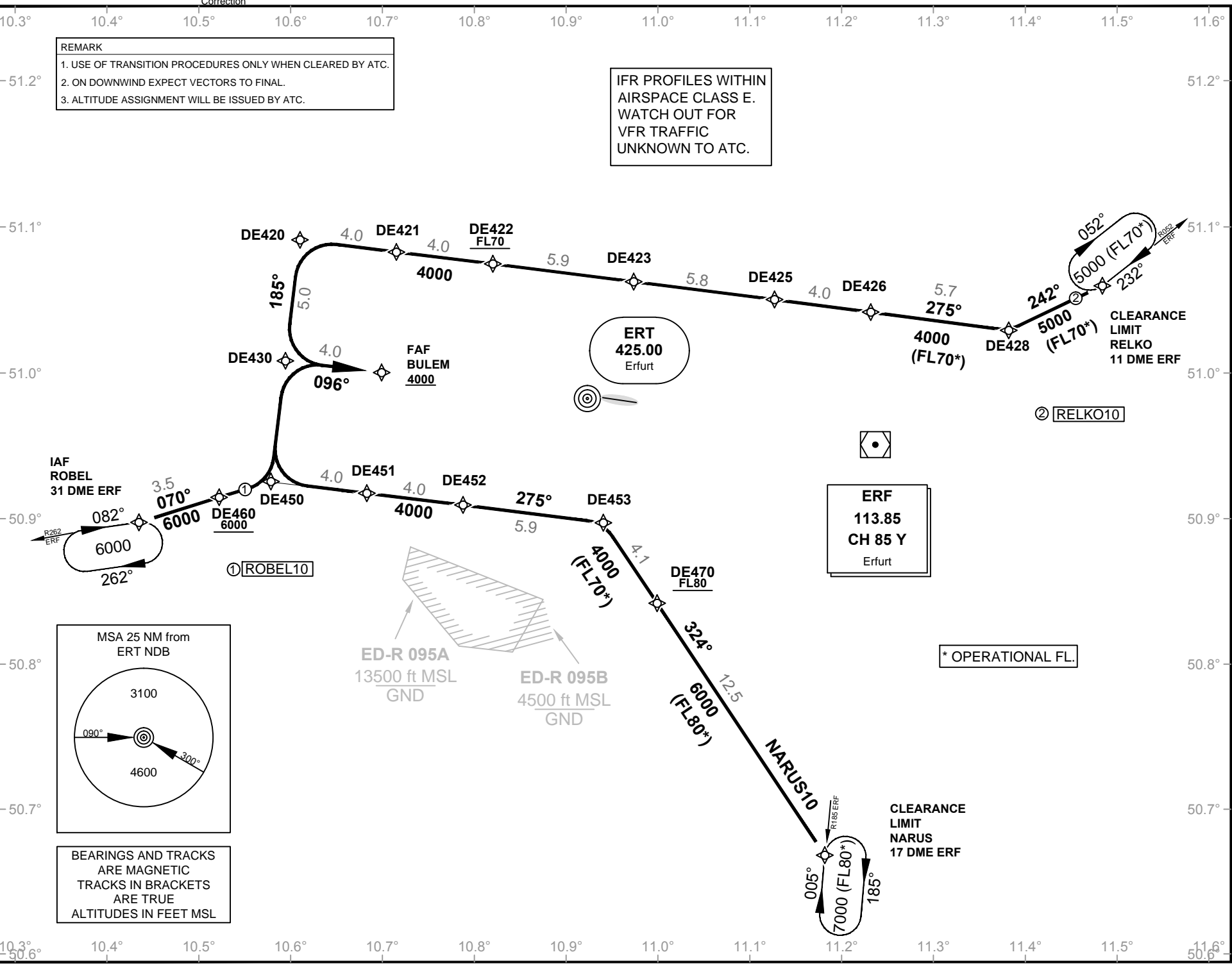
IFR PROFILES WITHIN
AIRSPACE CLASS E.
WATCH OUT FOR
VFR TRAFFIC
UNKNOWN TO ATC.

REMARK
1. USE OF TRANSITION PROCEDURES ONLY WHEN CLEARED BY ATC.
2. ON DOWNWIND EXPECT VECTORS TO FINAL.
3. ALTITUDE ASSIGNMENT WILL BE ISSUED BY ATC.

by Lars Toennig

Effective 03 APR 2014

© VACC Germany



BEARINGS AND TRACKS
ARE MAGNETIC
TRACKS IN BRACKETS
ARE TRUE
ALTITUDES IN FEET MSL

* OPERATIONAL FL.

CLEARANCE
LIMIT
NARUS
17 DME ERF

CLEARANCE
LIMIT
RELKO
11 DME ERF

ERT
425.00
Erfurt

ERF
113.85
CH 85 Y
Erfurt

ED-R 095A
13500 ft MSL
GND

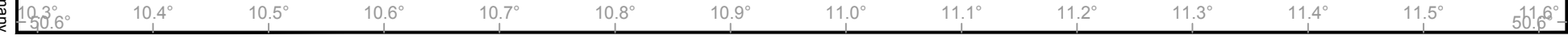
ED-R 095B
4500 ft MSL
GND

① ROBEL10

② RELKO10

IAF
ROBEL
31 DME ERF

FAF
BULEM
4000



VATSIM Germany GPS/FMS RNAV Arrival Chart

Transition Altitude: 5000 ft.

VAR: 2° E

München Radar 126.175
Tower 121.150
Ground 121.750
Apron 121.900

ATIS 133.450

TRANSITION TO FINAL APPROACH

RWY 28

Erfurt-Weimar
EDDE

For flight simulator use only. Not to be used for real world flight.

by Lars Toennig

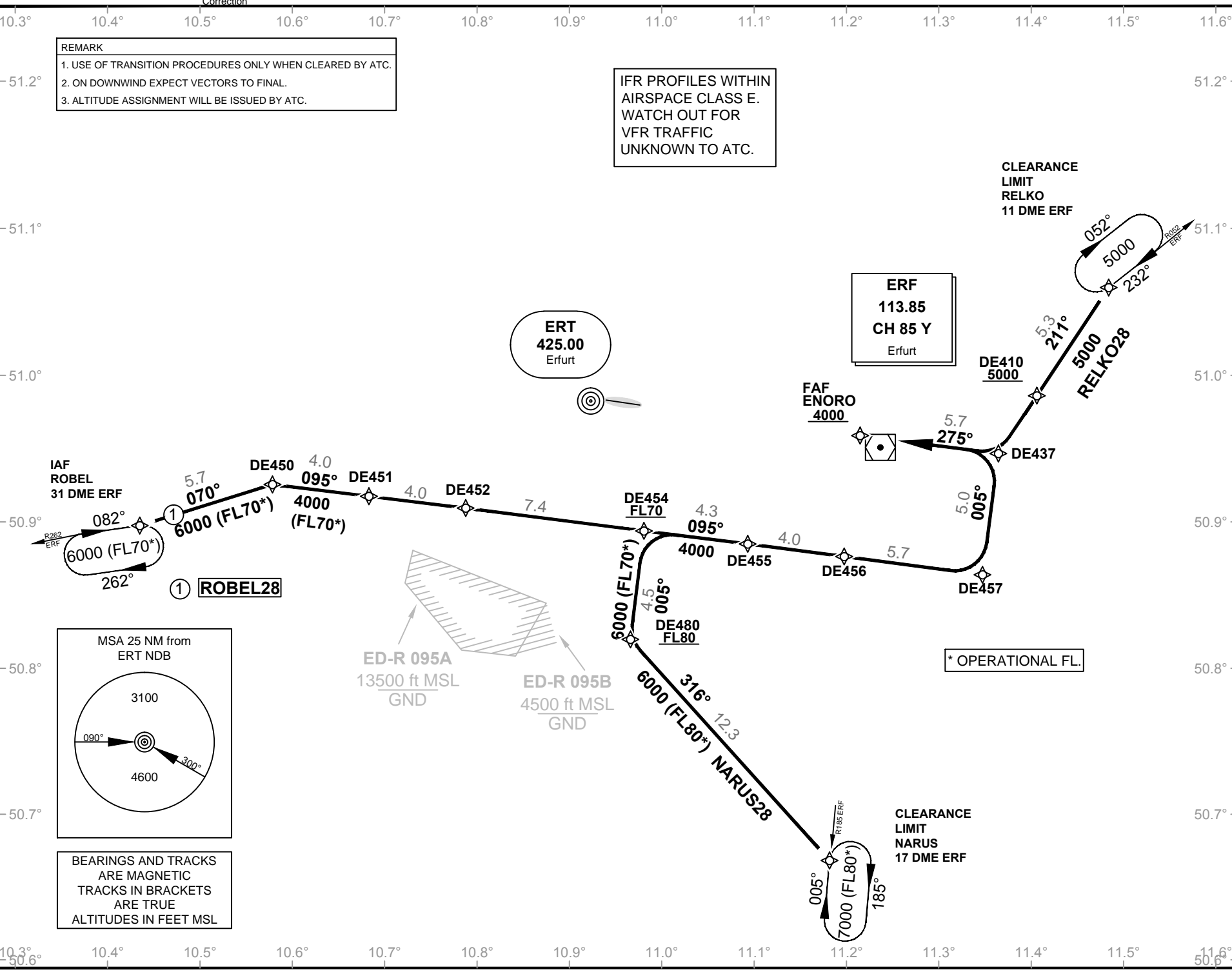
Effective 03 APR 2014

© VACC Germany

Correction

REMARK
1. USE OF TRANSITION PROCEDURES ONLY WHEN CLEARED BY ATC.
2. ON DOWNWIND EXPECT VECTORS TO FINAL.
3. ALTITUDE ASSIGNMENT WILL BE ISSUED BY ATC.

IFR PROFILES WITHIN
AIRSPACE CLASS E.
WATCH OUT FOR
VFR TRAFFIC
UNKNOWN TO ATC.



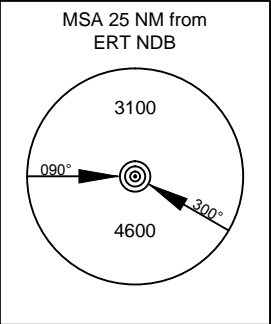
ERT
425.00
Erfurt

ERF
113.85
CH 85 Y
Erfurt

FAF ENORO
4000

CLEARANCE LIMIT
RELKO
11 DME ERF

CLEARANCE LIMIT
NARUS
17 DME ERF



BEARINGS AND TRACKS
ARE MAGNETIC
TRACKS IN BRACKETS
ARE TRUE
ALTITUDES IN FEET MSL

ED-R 095A
13500 ft MSL
GND

ED-R 095B
4500 ft MSL
GND

* OPERATIONAL FL.