

VATSIM Germany

Standard Instrument Departure Chart

Erfurt-Weimar

EDDE

SID

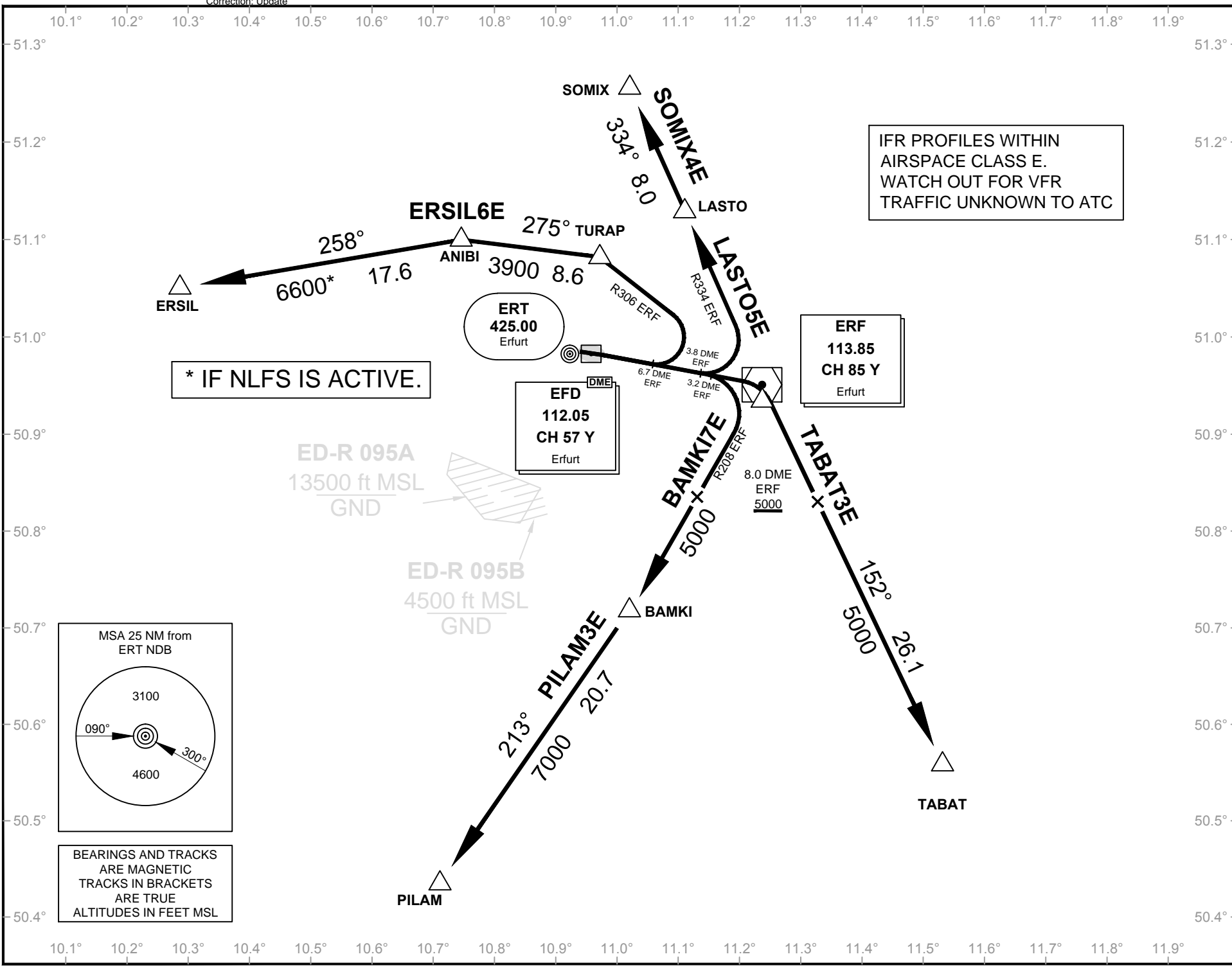
RWY 10

Designator	Route	After Take-Off		Remarks
		Climb to	Contact	
ERSIL 6E	ERSIL SIX ECHO On R277 ERF to 6.7 DME ERF or 3000, whichever is later, LT, on R306 ERF to TURAP (Δ), LT, on track 275° to ANIBI (Δ), LT, on track 258° to ERSIL (Δ). Cross TURAP at 3900 or above. During activity of NLFS cross ANIBI at 6600 or above GPS/FMS RNAV: [A1500+] - <u>DE101</u> - [A3000+; L] - DE102 - TURAP[A3900+; L] - ANIBI[L] - ERSIL.	5000 ft	Bremen Radar 126.175*	1. After TURAP BRNAV equipment necessary. 2. If unable to comply request ALTN Route by ATC.
BAMKI 7E	BAMKI SEVEN ECHO On R277 ERF to 3.2 DME ERF, RT, on R208 ERF to BAMKI (Δ). Cross 8.0 DME outbound ERF at 5000 or above GPS/FMS RNAV: [A1500+] - <u>DE103[R]</u> - DE104 - DE107[A5000+] - BAMKI			
SOMIX 4E	SOMIX FOUR ECHO On R277 ERF to 3.8 DME ERF, LT, on R334 ERF to SOMIX (Δ). GPS/FMS RNAV: [A1500+] - <u>DE105[L]</u> - DE106 - SOMIX.			
LASTO 5E	LASTO FIVE ECHO On R277 ERF to 3.8 DME ERF, LT, on R334 ERF to LASTO (Δ). GPS/FMS RNAV: [A1500+] - <u>DE105[L]</u> - DE106 - LASTO.			No access to (U)M852.
PILAM 3E	PILAM THREE ECHO On R277 ERF to 3.2 DME ERF, RT, on R208 ERF to BAMKI (Δ), RT, on track 213° to PILAM (Δ). Cross 8.0 DME outbound ERF at 5000 or above. Cross BAMKI at 7000 or above. GPS/FMS RNAV: [A1500+] - <u>DE103[R]</u> - DE104 - DE107[A5000+] - BAMKI[A7000+; R] - PILAM.			1. After BAMKI BRNAV equipment necessary. 2. Flights planned to proceed via UZ94 shall cross GORKO at FL260 or above. If unable to comply request ALTN Route by ATC.
TABAT 3E	TABAT THREE ECHO On R277 ERF to ERF, RT, on R152 ERF to TABAT (Δ). Cross 8.0 DME outbound ERF at 5000 or above. GPS/FMS RNAV: [A1500+] - ERF[R] - DE108[A1500+] - TABAT.			

(Sample: DE101 fly-over way point)

* Departure frequency may deviate from the frequency published. Check ATIS for current departure frequency.

Contact München Radar immediately after take-off!



Standard Instrument Departure Chart

Transition Altitude: 5000 ft.

VAR: 2° E

Erfurt Apron 121.900

Erfurt Ground 121.750

Erfurt Tower 121.150

München Radar 126.170

Erfurt-Weimar

EDDW

SID

RWY 10

For flight simulator use only. Not to be used for real world flight.

VATSIM Germany

Standard Instrument Departure Chart

Erfurt-Weimar

EDDE

SID

RWY 28

Designator	Route	After Take-Off		Remarks
		Climb to	Contact	
ERSIL 4W	ERSIL FOUR WHISKEY Direct to ERT, LT on track 268° ERT to BETKO, RT, on track 289° to ERSIL (Δ). During activity of NLFS cross 20.0 DME ERF at 6600 or above (MNM PDG 620 ft/NM). GPS/FMS RNAV: [A1500+] - ERT[L] - BETKO [R] - ERSIL	5000 ft	Bremen Radar 126.175*	1. After BETKO BRNAV equipment necessary. 2. If unable to comply request ALTN Route by ATC.
ERSIL 4N	ERSIL FOUR NOVEMBER On RWY track via ERT to 17.0 DME ERF, RT, on track 095° to 13.0 DME ERF, RT to ERT (Δ); on R278 ERF to ERSIL (Δ). Cross 20.0 DME ERF at 6600 or above. GPS/FMS RNAV: [A1500+] - ERT - <u>DE281</u> [R] - DE282 - <u>DE283</u> [R] - ERT - ERSIL			To be used during activity of NLFS.
BAMKI 6W	BAMKI SIX WHISKEY On RWY track via ERT to 17.0 DME ERF, RT, on track 059° to 31.0 DME GOT, RT, on R306 ERF (Δ), on R208 ERF to BAMKI (Δ). GPS/FMS RNAV: [A1500+] - ERT - <u>DE281</u> [R] - DE284 - DE285[R] - ERF[R] - BAMKI.			
SOMIX 7W	SOMIX SEVEN WHISKEY Direct to ERT, LT, on track 268° ERT to 3.0 DME EFD, RT, on track 054° to 30.0 DME GOT, LT, on track 010° ERT to SOMIX (Δ). GPS/FMS RNAV: [A1500+] - ERT[L] - <u>DE286</u> [R] - DE287 - DE288[L] - SOMIX.			
LASTO 6W	LASTO SIX WHISKEY Direct to ERT, LT, on track 268° ERT to 3.0 DME EFD, RT, on track 074° to intercept R232 GOT to LASTO (Δ). 010° ERT to SOMIX (Δ). GPS/FMS RNAV: [A1500+] - ERT[L] - <u>DE286</u> [R] - DE289 - DE290[L] - LASTO.			No access to (U)M852.
PILAM 3W	PILAM THREE WHISKEY Direct to ERT, LT, on track 268° ERT to 20.9 DME ERF, LT, on track 191° to ORTUV (Δ), LT, on track 1166° to PILAM (Δ). Cross 20.9 DME ERF at 5000 or above. During activity of NLFS cross 20.0 DME ERF at 6600 or above (MNM PDG 620 ft/NM). GPS/FMS RNAV: [A1500+] - ERT[L] - ABGOT[A5000+; L] - ORTUV[A7000+; L] - PILAM.			1. Not to be filed in FPL, on request by ATC only. 2. After 20.9 DME ERF BRNAV equipment necessary. 3. Flights planned to proceed via UZ94 shall cross GORKO at FL260 or above. If unable to comply file SID BAMKI.
TABAT 3W	TABAT THREE WHISKEY On RWY track via ERT to 17.0 DME ERF, RT, on track 059° to 31.0 DME GOT, RT, on R306 ERF to ERF (Δ), on R152 ERF to TABAT (Δ). GPS/FMS RNAV: [A1500+] - ERF - <u>DE281</u> [R] - DE284 - DE285[R] - ERF[A5000+; R] - TABAT.			

(Sample: DE101 fly-over way point)

* Departure frequency may deviate from the frequency published. Check ATIS for current departure frequency.

Contact München Radar immediately after take-off!

Standard Instrument Departure Chart

Transition Altitude: 5000 ft.

VAR: 2° E

Erfurt Apron 121.900
Erfurt Ground 121.750
Erfurt Tower 121.150
München Radar 126.170

ATIS 133.450

Erfurt-Weimar

EDDE

SID

RWY 28

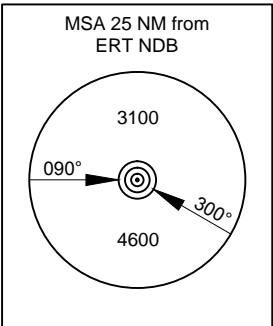
GOT
115.25
CH 99 Y
Gotem

ERF
113.85
CH 85 Y
Erfurt

EFD
112.05
CH 57 Y
Erfurt

ERT
425.00
Erfurt

IFR PROFILES WITHIN
AIRSPACE CLASS E.
WATCH OUT FOR VFR
TRAFFIC UNKNOWN TO ATC



BEARINGS AND TRACKS
ARE MAGNETIC
TRACKS IN BRACKETS
ARE TRUE
ALTITUDES IN FEET MSL

by Lars Toennig

Effective: 03 Apr 2014

© VACC Germany

