

**VATSIM Germany**  
**Standard Instrument Arrival Chart**
**Berlin Brandenburg (North)**
**EDDB**
**STAR**
**RWY 07L / 07R**

Designator	Identification Significant Points	MAG Track	Dist NM	MNM IFR Cruising Level	Remarks
BODLA3Z	<b>BODLA THREE ZULU</b>				1. BRNAV equipment necessary 2. Arrange your flight to cross RADEL max. FL140.
	Δ BODLA	250(252.2)	30.1	4000	
	Δ GOLBO	239(241.2)	21.1	4000	
	Δ RADEL	249(250.8)	27.7	4000	
RENKI5Z	<b>RENKI FIVE ZULU</b>				4000
	Δ RENKI	272(274.2)	31.1		
	Δ RADEL	249(250.8)	27.7		
	Δ LANUM				
GOLBO1Z	<b>GOLBO ONE ZULU</b>				
	Δ GOLBO	239(241.2)	21.1	4000	
	Δ RADEL	249(250.8)	27.7	4000	
BATEL6Z	<b>BATEL SIX ZULU</b>				1. BRNAV equipment necessary 2. Arrange your flight to cross LANUM max. FL140.
	Δ BATEL				
	Δ GIRIT	064(066.4)	38.9	4000	
	Δ LANUM	090(091.9)	11.3	4000	
VIBIS2Z	<b>VIBIS TWO ZULU</b>				
	Δ VIBIS	169(170.7)	10.9	4000	

**VATSIM Germany**  
**Standard Instrument Arrival Chart**
**Berlin Brandenburg (South)**
**EDDB**
**STAR**
**RWY 07L / 07R**

Designator	Identification Significant Points	MAG Track	Dist NM	MNM IFR Cruising Level	Remarks
I NUKRO4S	<b>NUKRO FOUR SIERRA</b> Δ NUKRO Δ Klasdorf DVOR/DME				Arrange your flight to cross NUKRO max. FL140 and KLF max. FL90
		265	32	4000	
I RUDAK5S	<b>RUDAK FIVE SIERRA</b> Δ RUDAK Δ Klasdorf DVOR/DME				Arrange your flight to cross KLF max. FL90
		057	28	4000	
I MILGU2S	<b>MILGU TWO SIERRA</b> Δ MILGU Δ NOLNI Δ Klasdorf DVOR/DME				1. Arrange your flight to cross KLF max. FL90 2. BRNAV equipment necessary
		059(061.3)	12.6	4000	
		021	23	4000	
I AKUDI3S	<b>AKUDI THREE SIERRA</b> Δ AKUDI Δ Klasdorf DVOR/DME				Arrange your flight to cross KLF max. FL90
		351	27	4000 (5000)	

# VATSIM Germany Standard Instrument Arrival Chart

Berlin Brandenburg (North)

EDDB

STAR

RWY 07L / 07R

Transition Altitude: 5000 ft.

ATIS 124.950 Director (North) 121.120

Director (South) 119.500

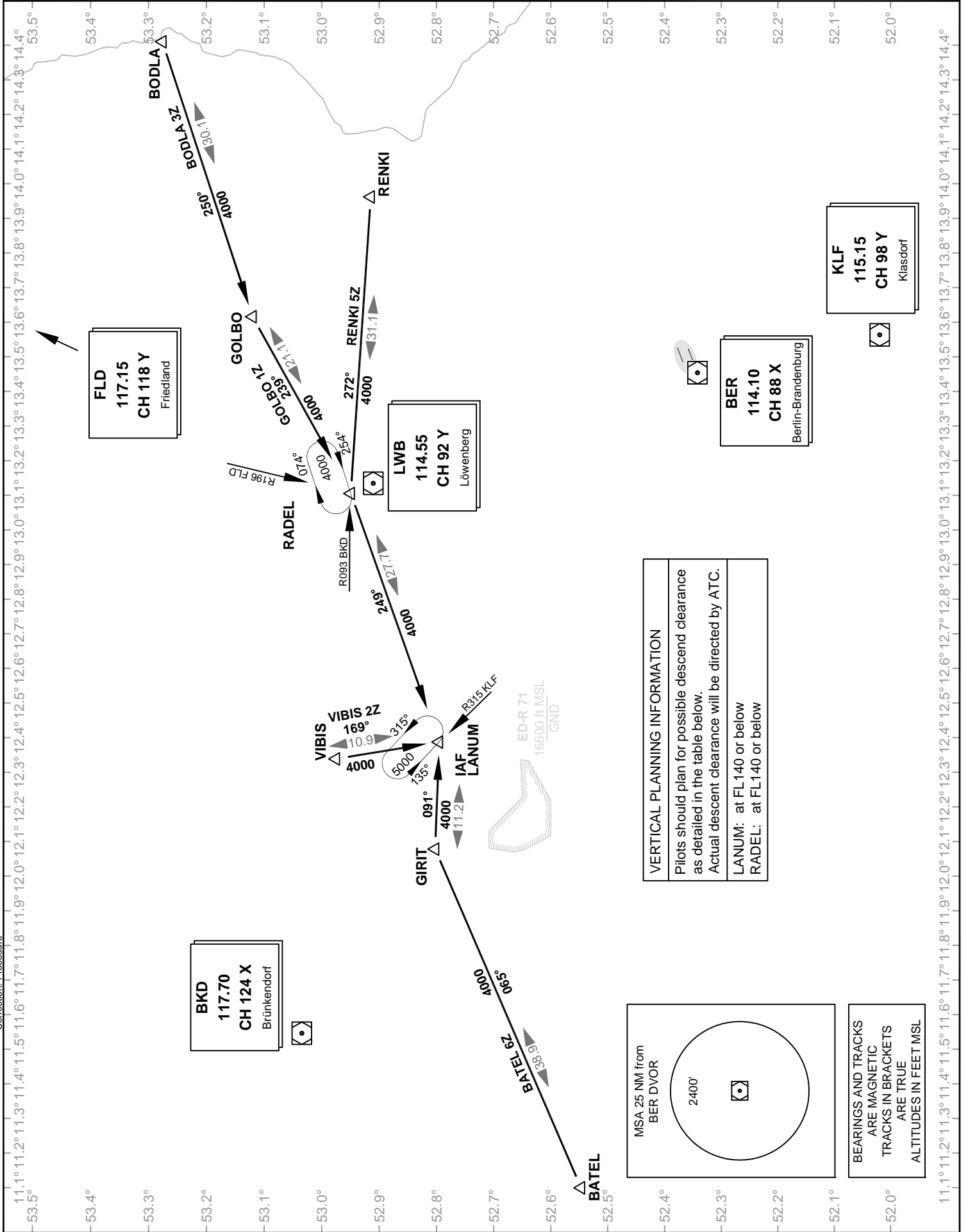
Bremen Radar (North) 119.620

Tower (North) 120.020

Bremen Radar (South) 126.420

Tower (South) 118.800

VAR: 2° E



# VATSIM Germany Standard Instrument Arrival Chart

## Berlin Brandenburg (South) EDDB

Transition Altitude: 5000 ft.

ATIS 124.950 Director (North) 121.120

Director (South) 119.500

Bremen Radar (North) 119.620

Tower (North) 120.020

Bremen Radar (South) 126.420

Tower (South) 118.800

VAR: 2° E

### STAR RWY 07L / 07R

