

VATSIM Germany
Standard Instrument Departure Chart

MAGDEBURG-COCHSTEDT
EDBC

SID
RWY 08 / 26

Designator	Route	After Take-Off		Remarks
		Climb to	Contact	
RWY 08				
ABGUS 1L	ABGUS ONE LIMA On track 075° via CB NDB to 2.5 DME COD; LT, on R252 MAG to ABGUS. GPS/FMS RNAV: [1000+] - CB - <u>BC010</u> [L] - BC011 - ABGUS	5000 ft	Bremen Radar 123.220	
MAG 1L	MAGDEBURG ONE LIMA On track 075° via CB NDB to 10.0 DME COD; LT, on R205 MAG to MAG. GPS/FMS RNAV: [1000+] - CB - BC012[L] - MAG			
KENIG 1L	KENIG ONE LIMA On track 075° via CB NDB to 2.5 DME COD; RT, on R219 MAG to KENIG. GPS/FMS RNAV: [1000+] - CB - <u>BC010</u> [R] - BC013 - KENIG			

RWY 26

ABGUS 1K	ABGUS ONE KILO On track 255° CB NDB to 3.0 DME COD; RT, on track 300° to intercept R252 MAG; on R252 MAG to ABGUS. GPS/FMS RNAV: [1000+] - BC002[R] - BC003[L] - ABGUS	5000 ft	Bremen Radar 123.220	
MAG 1K	MAGDEBURG ONE KILO On track 255° CB NDB to 3.0 DME COD; RT, on R252 MAG to MAG. GPS/FMS RNAV: [1000+] - <u>BC001</u> [R] - BC006 - MAG			
KENIG 2K	KENIG TWO KILO On track 255° CB NDB to 3.0 DME COD; LT, on track 156° to intercept R219 MAG; on R219 MAG to KENIG. GPS/FMS RNAV: [1000+] - <u>BC001</u> [L] - BC004 - BC005[R] - KENIG			

(Sample: BC001 fly-over way point)

* Frequencies in brackets are optional.

Remain on TWR-Frequency until passing altitude 2000ft.

VATSIM Germany Standard Instrument Departure Chart

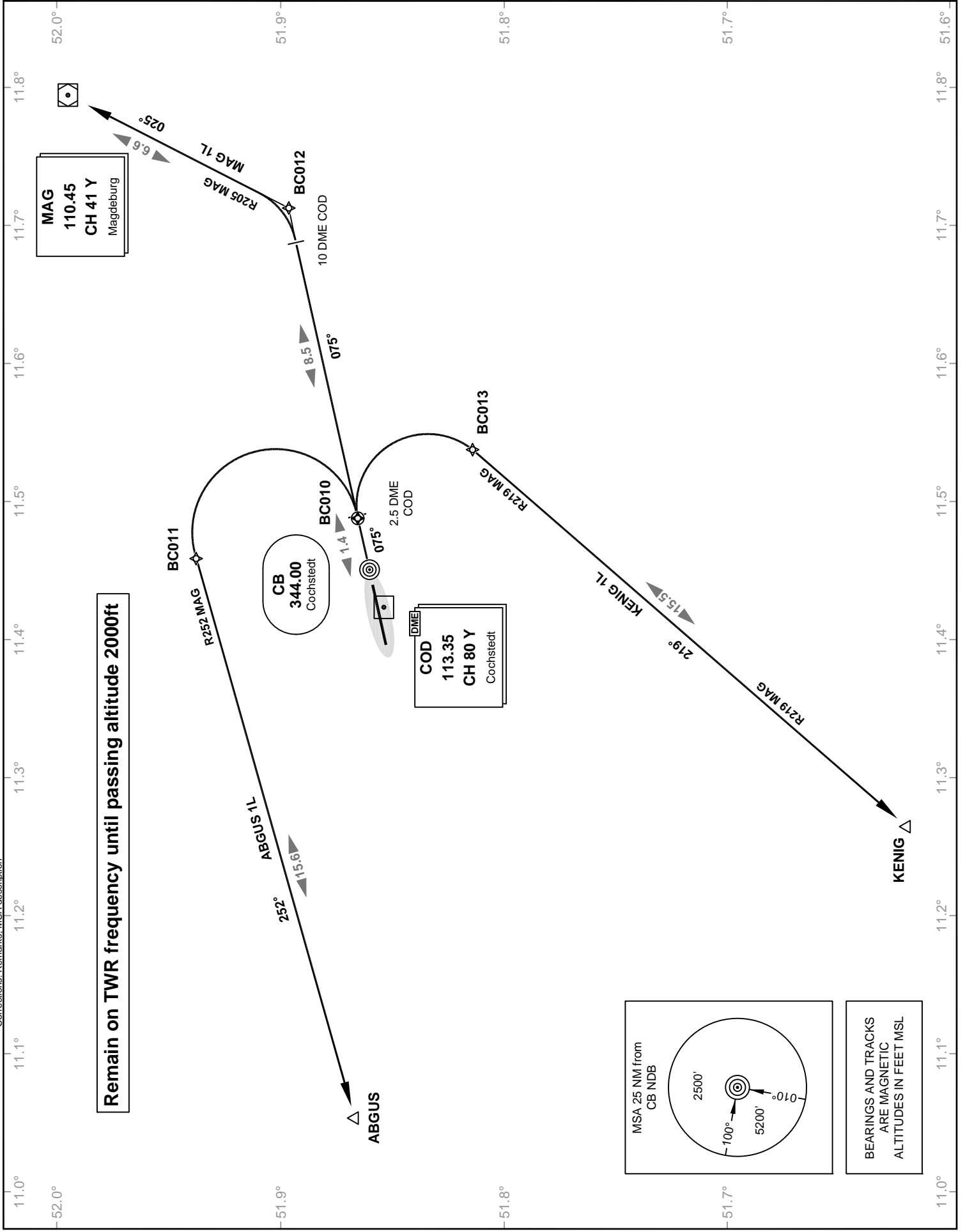
Magdeburg-Cochstedt EDBC

Transition Altitude: 5000 ft.

Cochstedt Ground 121.820
Cochstedt Tower 131.120
München Radar 126.170
Bremen Radar 123.220

SID RWY 08

VAR: 2° E



VATSIM Germany Standard Instrument Departure Chart

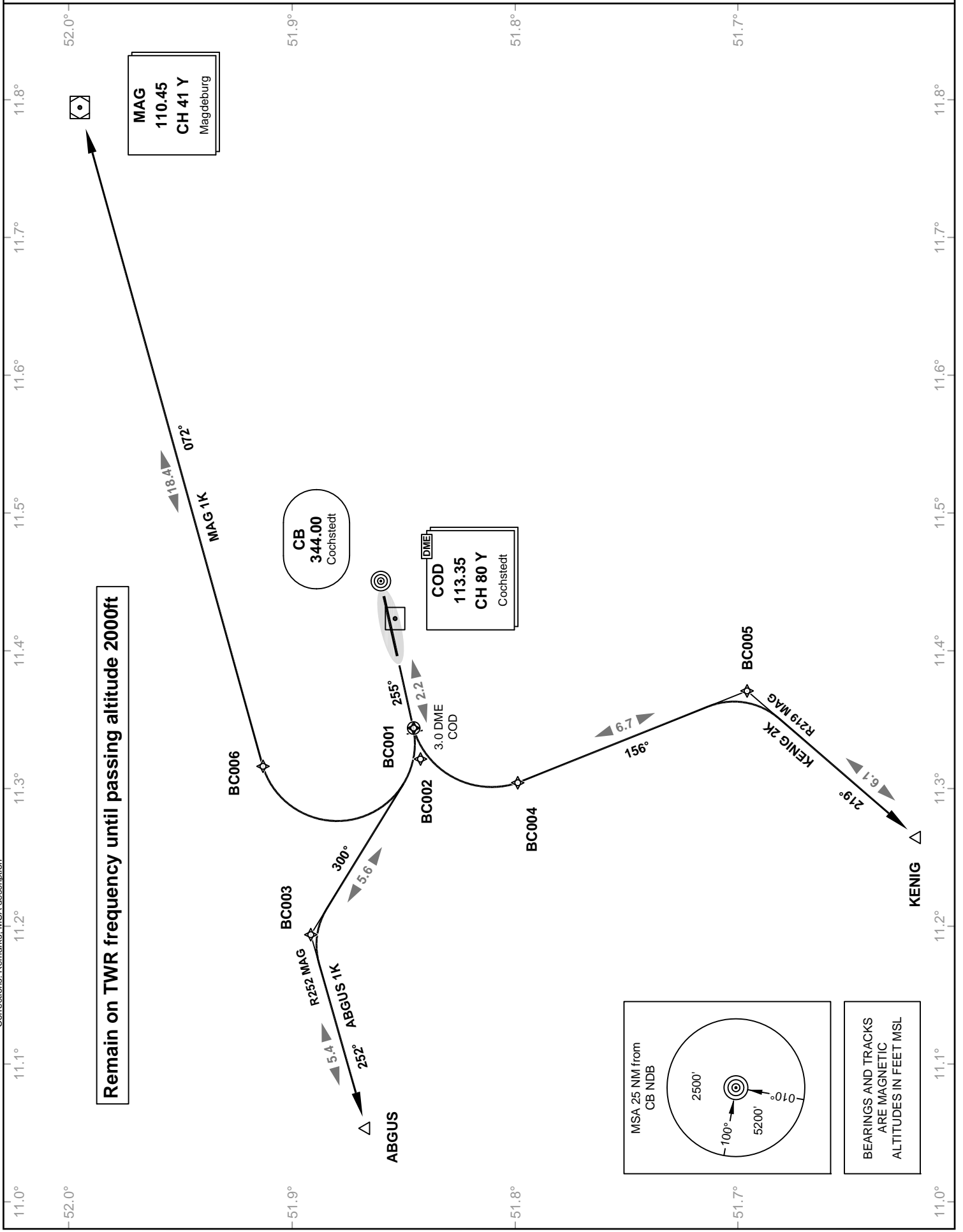
Magdeburg-Cochstedt EDBC

Transition Altitude: 5000 ft.

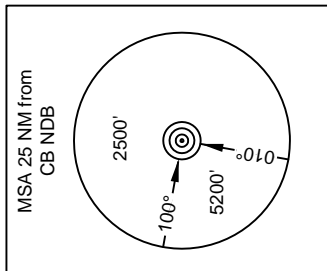
Cochstedt Ground 121.820
Cochstedt Tower 131.120
München Radar 126.170
Bremen Radar 123.220

SID RWY 26

VAR: 2° E



Remain on TWR frequency until passing altitude 2000ft



BEARINGS AND TRACKS
ARE MAGNETIC
ALTITUDES IN FEET MSL

Corrections: Remarks: MSA description