

Bremen Radar
124.170 123.220 125.020

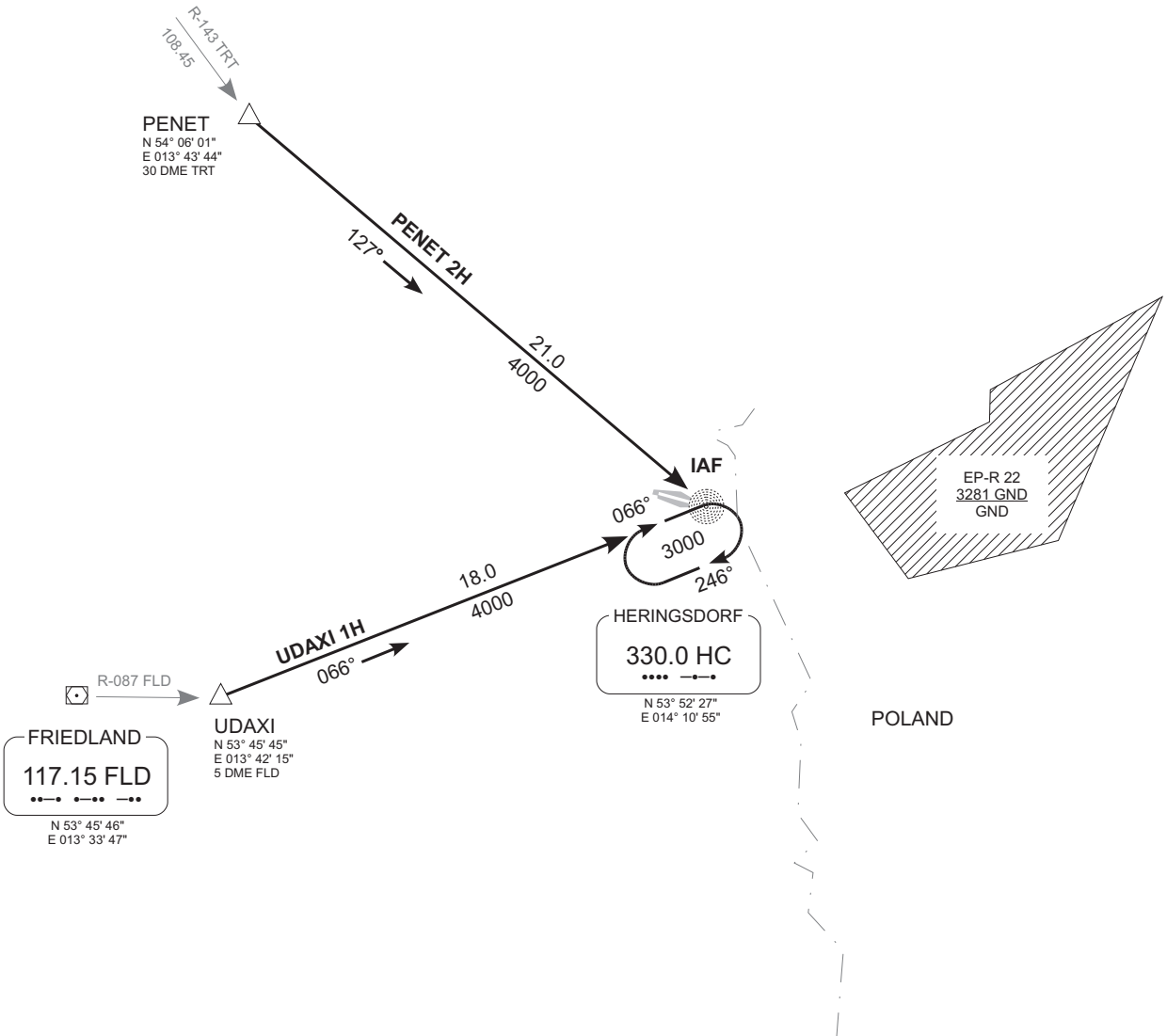
Heringsdorf Tower
132.820

Trans. alt. 5000'
Apt. elev. 93'
Mag. var. 3° E

1800'
25 NM

MSA HC NDB
German territory
only

PENET TWO HOTEL (PENET 2H)
UDAXI ONE HOTEL (UDAXI 1H)
RWY 10/28 ARRIVALS



Bearings and tracks are
magnetic
Altitudes in feet MSL

Valid for flight simulation use only - do not use for real life navigation

Revision: 2010-06-14. Changes: comm. frequencies.