

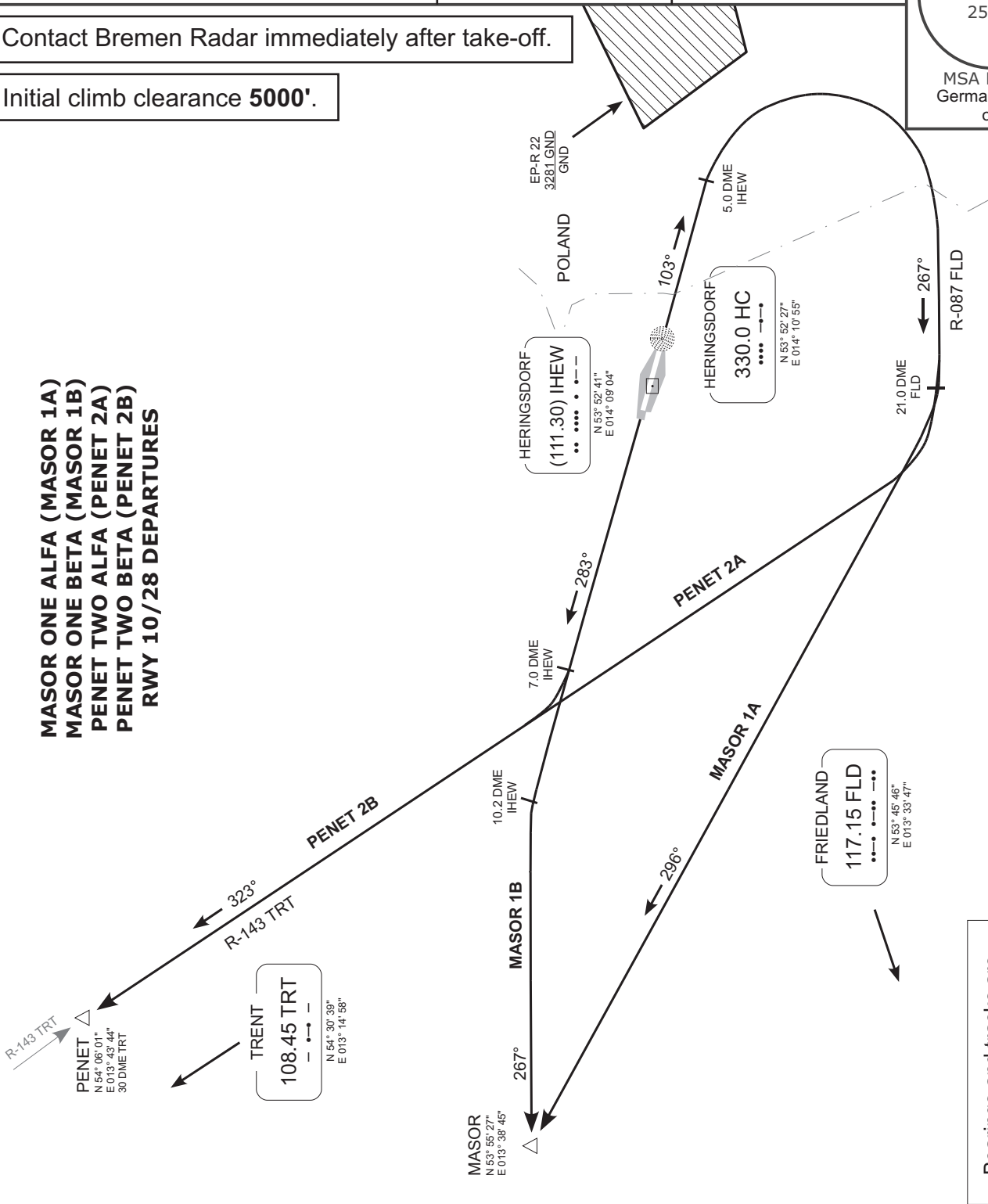
Bremen Radar 124.170 123.220 125.020	Heringsdorf Tower 132.820	Trans. alt. 5000' Mag. var. 3° E	1800' 25 NM
---	------------------------------	-------------------------------------	----------------

Contact Bremen Radar immediately after take-off.

Initial climb clearance **5000'**.

MSA HC NDB
German territory only

MASOR ONE ALFA (MASOR 1A)
MASOR ONE BETA (MASOR 1B)
PENET TWO ALFA (PENET 2A)
PENET TWO BETA (PENET 2B)
RWY 10/28 DEPARTURES



Bearings and tracks are magnetic
Altitudes in feet MSL

SID	RWY	ROUTING	REMARKS
MASOR 1A	10	On track 103° via HC NDB to 5.0 DME IHEW; RT to intercept R-087 FLD; on R-087 FLD to 21.0 DME FLD; RT, on track 296° to MASOR.	After passing 10.2 DME IHEW BRNAV equipment necessary.
MASOR 1B	28	On track 283° HC NDB to 10.2 DME IHEW; LT, on track 267° to MASOR.	After passing 21.0 DME FLD BRNAV equipment necessary.
PENET 2A	10	On track 103° via HC NDB to 5.0 DME IHEW; RT to intercept R-087 FLD; on R-087 FLD to 21.0 DME FLD; RT, on R-143 TRT to PENET.	
PENET 2B	28	On track 283° HC NDB to 7.0 DME IHEW; RT, on R-143 TRT to PENET.	

Revision: 2010-06-14. Changes: comm. frequencies.

Valid for flight simulation use only - do not use for real life navigation