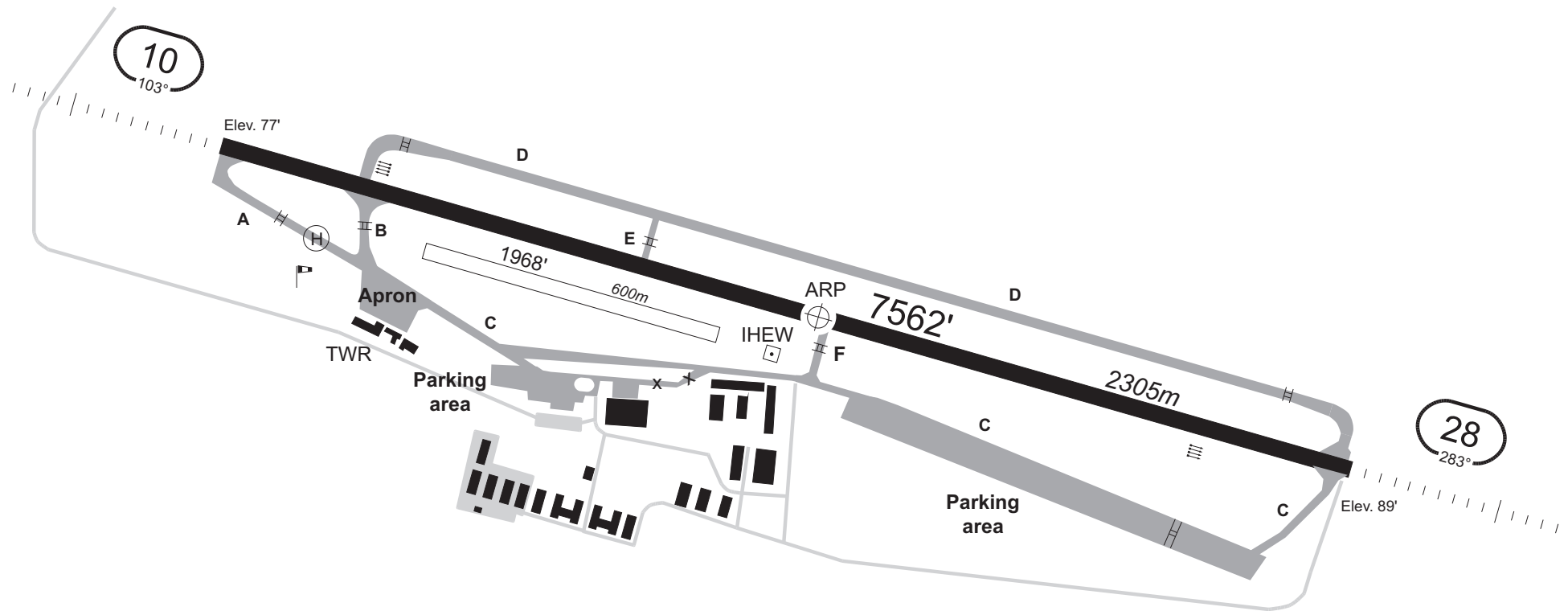


Heringsdorf Tower
132.820

Bremen Radar
124.170 123.220 125.020


Apt. Elev. 93'

RWY	Intersection	TORA / TODA / ASDA (m)
10	A	2305
	B	1956
	F	1049
28	C	2305
	F	1241
	E	872



RWY	Dimensions (m)	Surface	Strength
10	2305 x 35	ASPH	PCN 38 F/A/X/T
28			

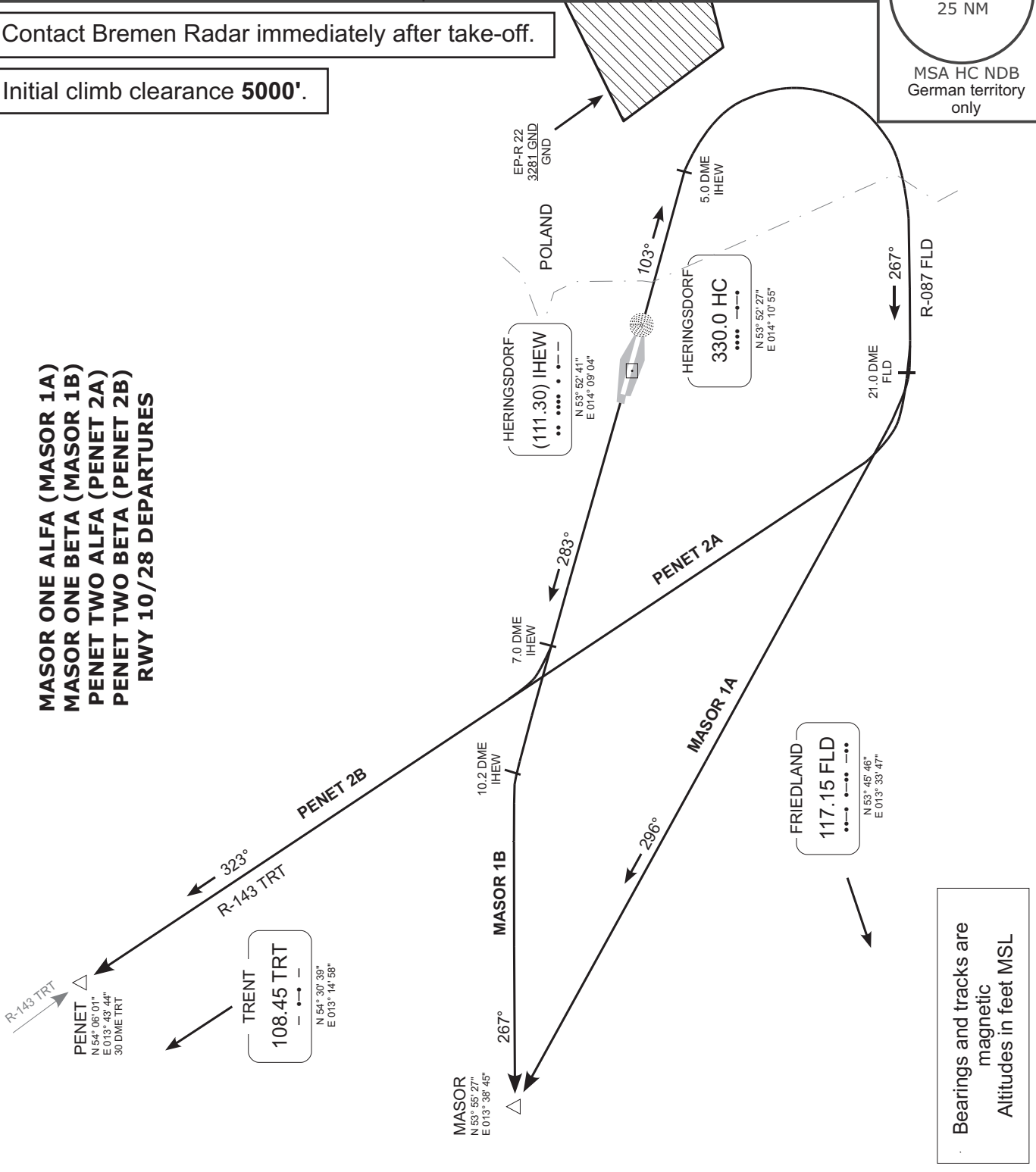
Valid for flight simulation use only - do not use for real life navigation

Bremen Radar 124.170 123.220 125.020	Heringsdorf Tower 132.820	Trans. alt. 5000' Mag. var. 3° E	 1800' 25 NM MSA HC NDB German territory only
---	------------------------------	-------------------------------------	--

Contact Bremen Radar immediately after take-off.

Initial climb clearance **5000'**.

MASOR ONE ALFA (MASOR 1A)
MASOR ONE BETA (MASOR 1B)
PENET TWO ALFA (PENET 2A)
PENET TWO BETA (PENET 2B)
RWY 10/28 DEPARTURES



Bearings and tracks are magnetic
Altitudes in feet MSL

SID	RWY	ROUTING	REMARKS
MASOR 1A	10	On track 103° via HC NDB to 5.0 DME IHEW; RT to intercept R-087 FLD; on R-087 FLD to 21.0 DME FLD; RT, on track 296° to MASOR.	After passing 10.2 DME IHEW BRNAV equipment necessary.
MASOR 1B	28	On track 283° HC NDB to 10.2 DME IHEW; LT, on track 267° to MASOR.	After passing 21.0 DME FLD BRNAV equipment necessary.
PENET 2A	10	On track 103° via HC NDB to 5.0 DME IHEW; RT to intercept R-087 FLD; on R-087 FLD to 21.0 DME FLD; RT, on R-143 TRT to PENET.	
PENET 2B	28	On track 283° HC NDB to 7.0 DME IHEW; RT, on R-143 TRT to PENET.	

Revision: 2010-06-14. Changes: comm. frequencies.

Valid for flight simulation use only - do not use for real life navigation

Bremen Radar
124.170 123.220 125.020

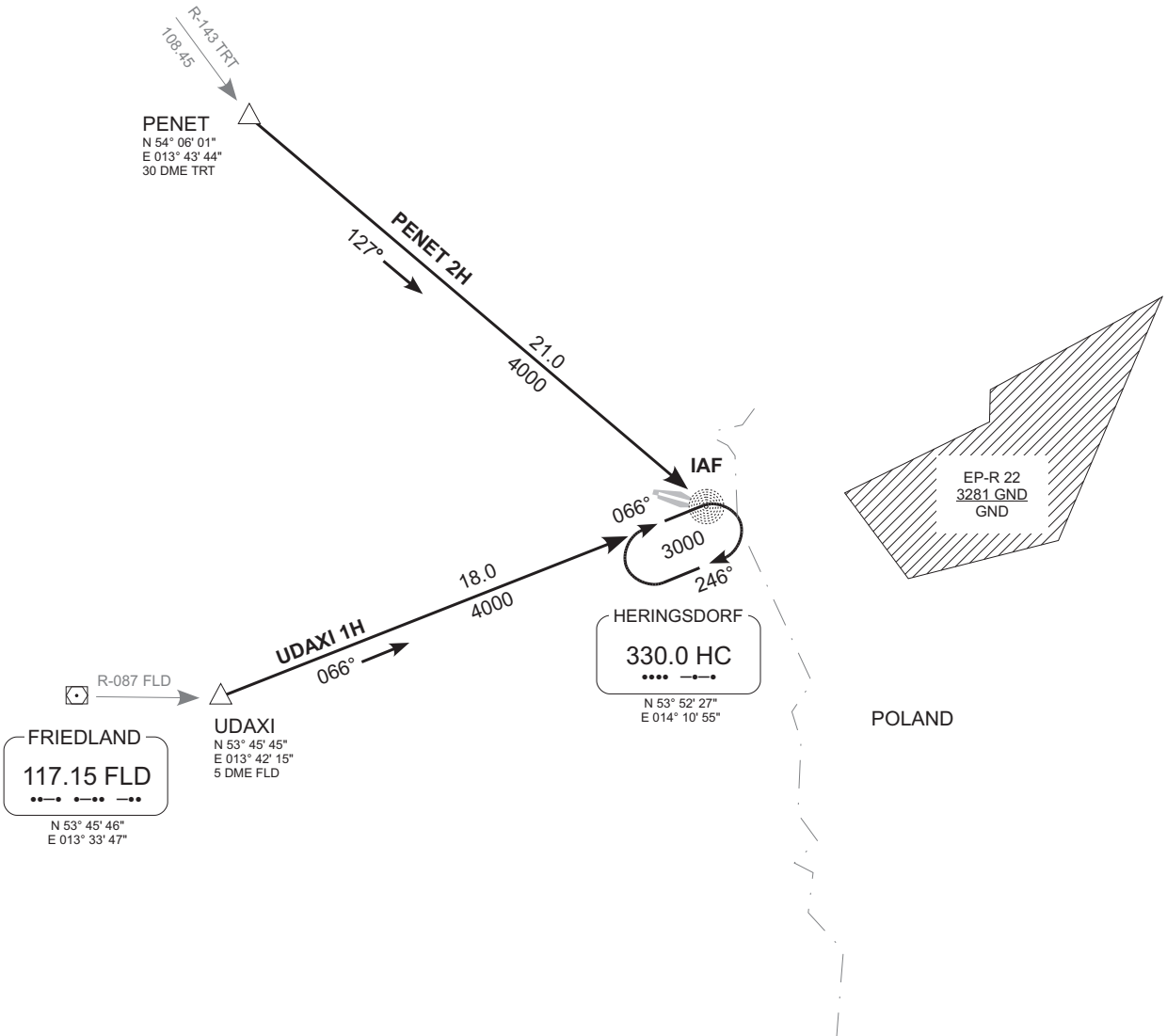
Heringsdorf Tower
132.820

Trans. alt. 5000'
Apt. elev. 93'
Mag. var. 3° E

1800'
25 NM

MSA HC NDB
German territory
only

PENET TWO HOTEL (PENET 2H)
UDAXI ONE HOTEL (UDAXI 1H)
RWY 10/28 ARRIVALS



Bearings and tracks are
magnetic
Altitudes in feet MSL

Valid for flight simulation use only - do not use for real life navigation

Revision: 2010-06-14. Changes: comm. frequencies.

Bremen Radar
124.170 123.220 125.020

Heringsdorf Tower
132.820

Transition alt. 5000'
Airport elev. 93'
Threshold elev. 89'

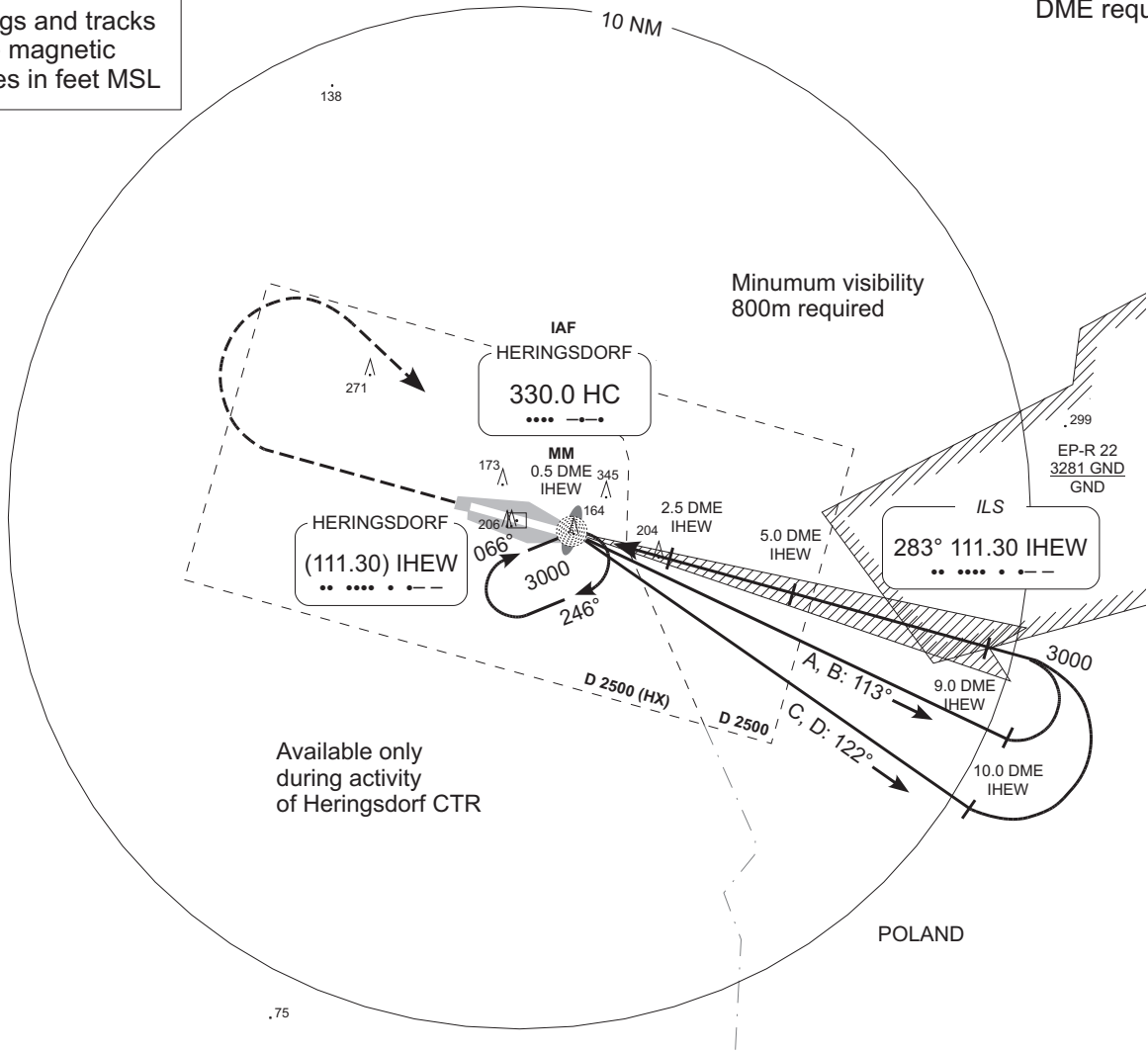
1800'
25 NM

MSA HC NDB
German territory only

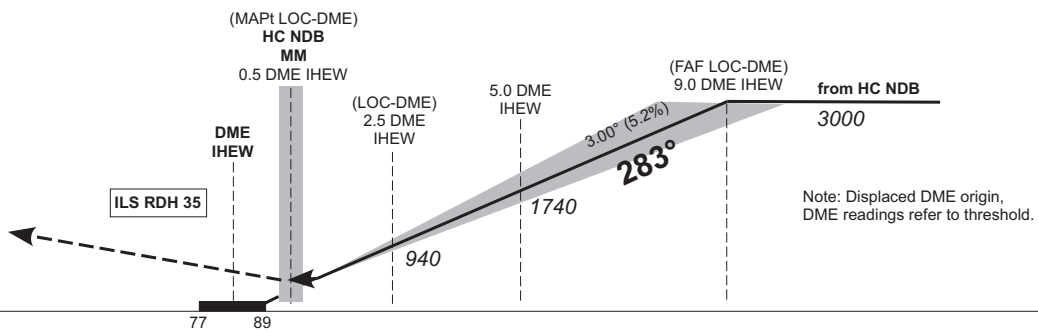
**MISSED APCH: Climb straight ahead to 1500'
RT to HC NDB climbing to 3000'.**

DME required

Bearings and tracks
are magnetic
Altitudes in feet MSL



Available only during activity of Heringsdorf CTR



Note: Displaced DME origin, DME readings refer to threshold.

OCA (OCH)	A	B	C	D
ILS CAT I	296 (207)	306 (217)	316 (227)	326 (237)
LOC-DME	450 (370)			
CIRCLING*	640	740	790	

* South of aerodrome only.

DME IHEW	1	2	3	4	5	6	7	8
DIST THR	1	2	3	4	5	6	7	8
ALTITUDE	460	780	1100	1420	1740	2060	2380	2690

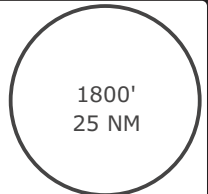
LOC-DME: Timing not authorized for defining the MAPt.

GS	kt	80	100	120	140	160	180
5.0 DME IHEW – THR (5.0 NM)	MIN:SEC	3:45	3:00	2:30	2:09	1:53	1:40

Bremen Radar
124.170 123.220 125.020

Heringsdorf Tower
132.820

Transition alt. 5000'
Airport elev. 93'
Threshold elev. 77'

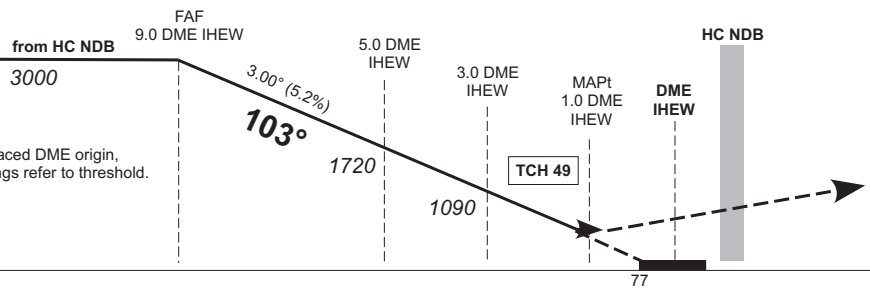
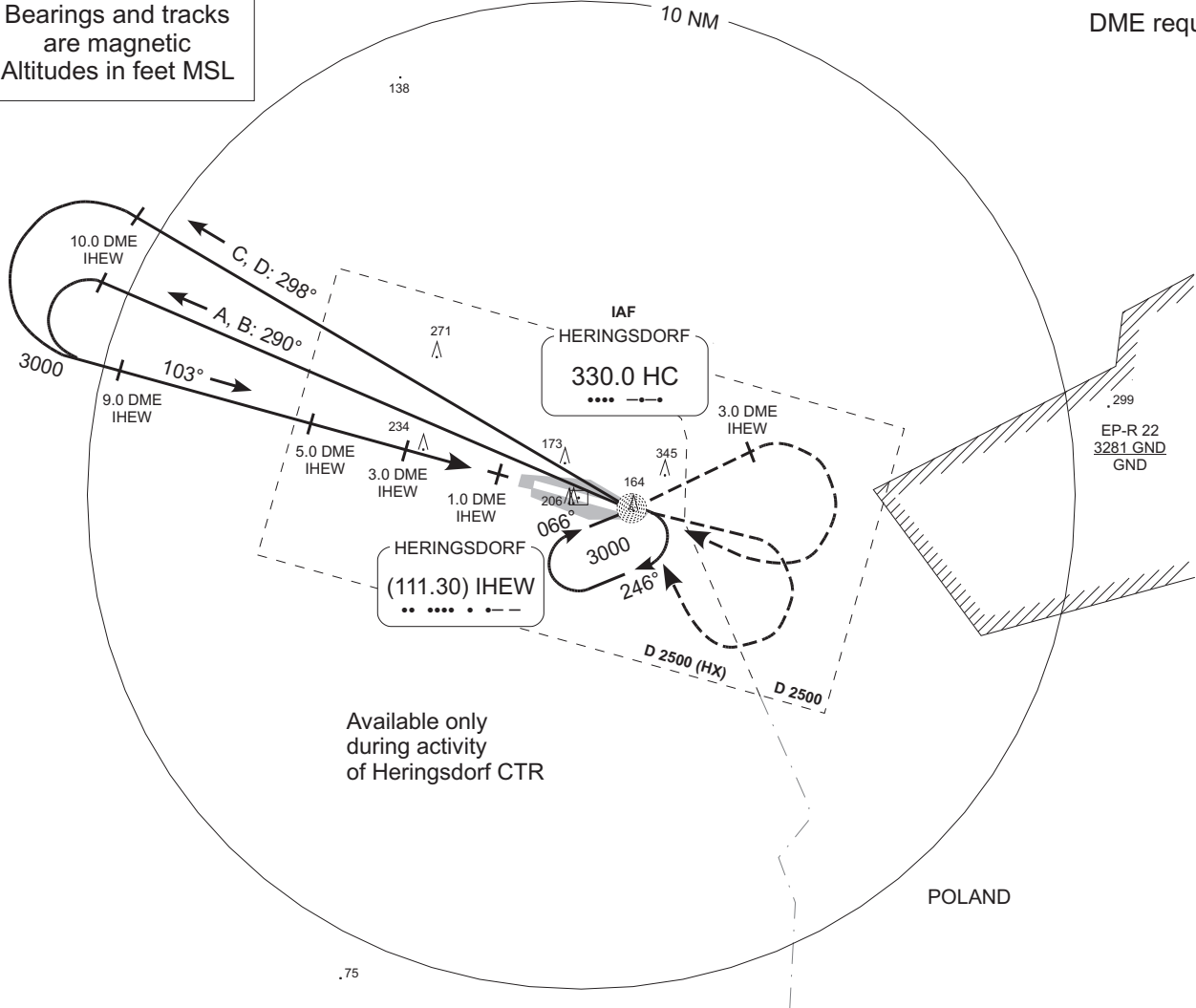


MSA HC NDB
German territory
only

**MISSED APCH: Climb straight ahead to 1500'
RT to HC NDB climbing to 3000'.**

DME required

Bearings and tracks
are magnetic
Altitudes in feet MSL



Note: Displaced DME origin,
DME readings refer to threshold.

OCA (OCH)	A	B	C	D
NDB-DME	480 (410)			

DME IHEW	9	8	7	6	5	4	3	2
DIST THR	9	8	7	6	5	4	3	2
ALTITUDE	3000	2680	2360	2040	1720	1400	1090	770

Timing not authorized for defining the MAPt.

GS	kt	80	100	120	140	160	180
5.0 DME IHEW – 1.0 DME IHEW (4.0 NM)	MIN:SEC	3:00	2:24	2:00	1:43	1:30	1:20

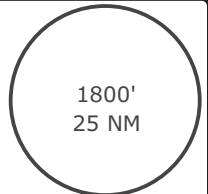
Revision: 2010-06-14. Changes: comm. frequencies.

Valid for flight simulation use only - do not use for real life navigation

Bremen Radar
124.170 123.220 125.020

Heringsdorf Tower
132.820

Transition alt. 5000'
Airport elev. 93'
Threshold elev. 89'

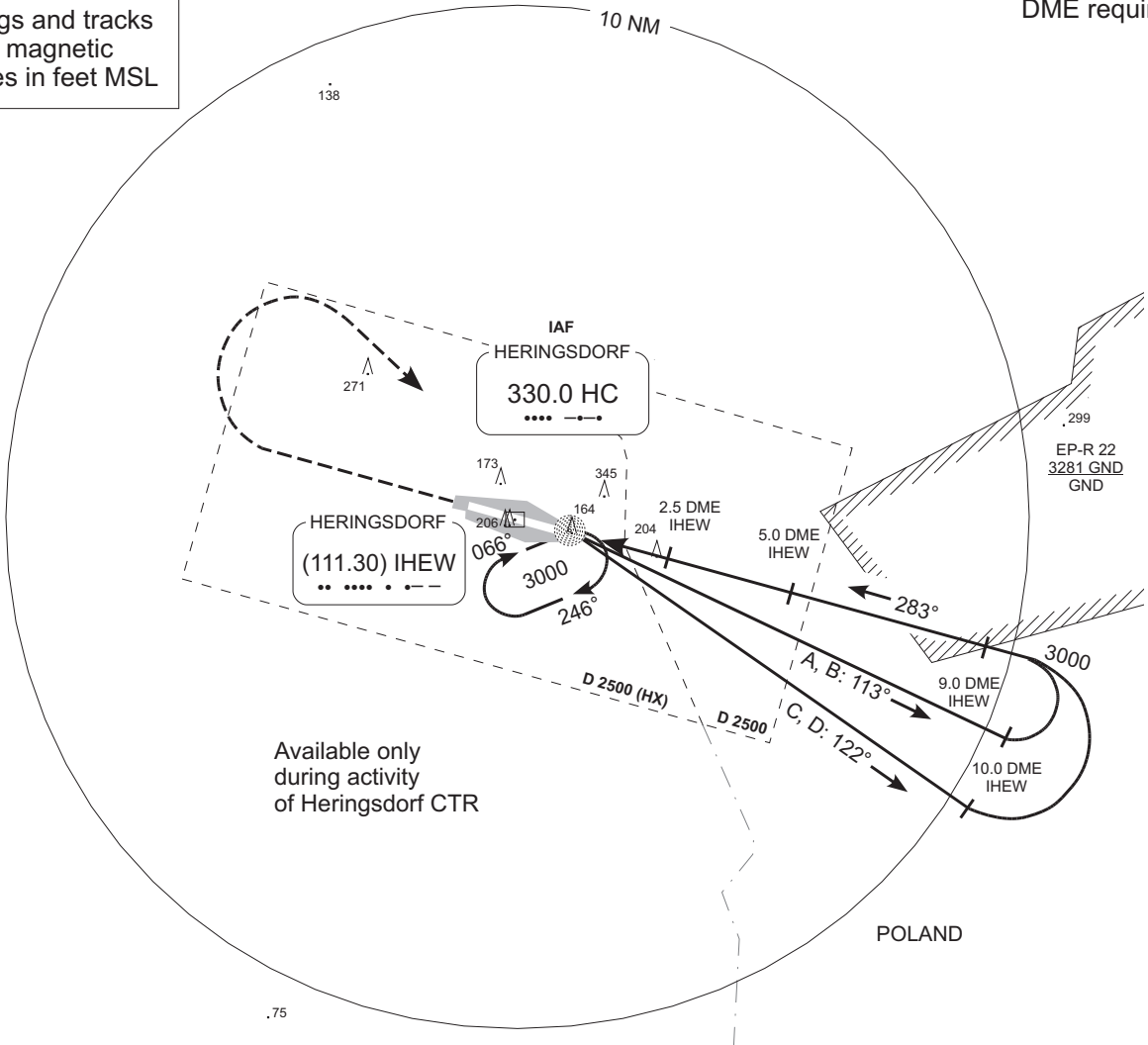


MSA HC NDB
German territory only

**MISSED APCH: Climb straight ahead to 1500'
RT to HC NDB climbing to 3000'.**

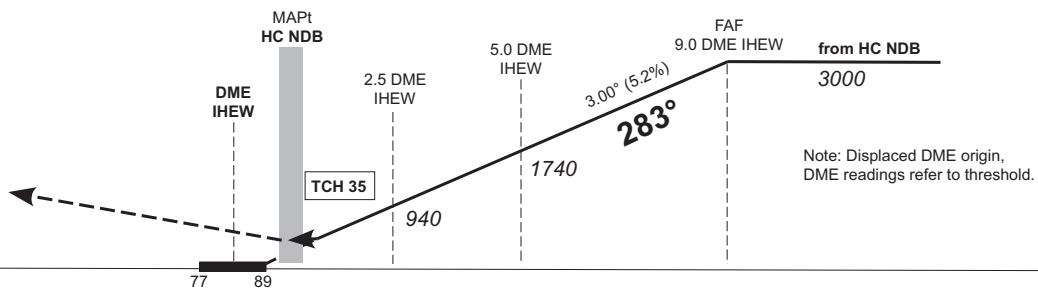
Bearings and tracks
are magnetic
Altitudes in feet MSL

DME required



Available only
during activity
of Heringsdorf CTR

POLAND



Note: Displaced DME origin,
DME readings refer to threshold.

OCA (OCH)	A	B	C	D
NDB-DME	510 (420)			
CIRCLING*	640	740	790	

* South of aerodrome only.

DME IHEW	2	3	4	5	6	7	8
DIST THR	2	3	4	5	6	7	8
ALTITUDE	780	1100	1420	1740	2060	2380	2690

Timing not authorized for defining the MAPt.

GS	kt	80	100	120	140	160	180
5.0 DME IHEW – HC NDB (4.5 NM)	MIN:SEC	3:23	2:42	2:15	1:56	1:41	1:30