

# VATSIM GERMANY Transition Chart

## Leipzig-Altenburg EDAC

### TRANS Rwy 04

Transition Altitude: 5000 ft

Altenburg Tower 123.579

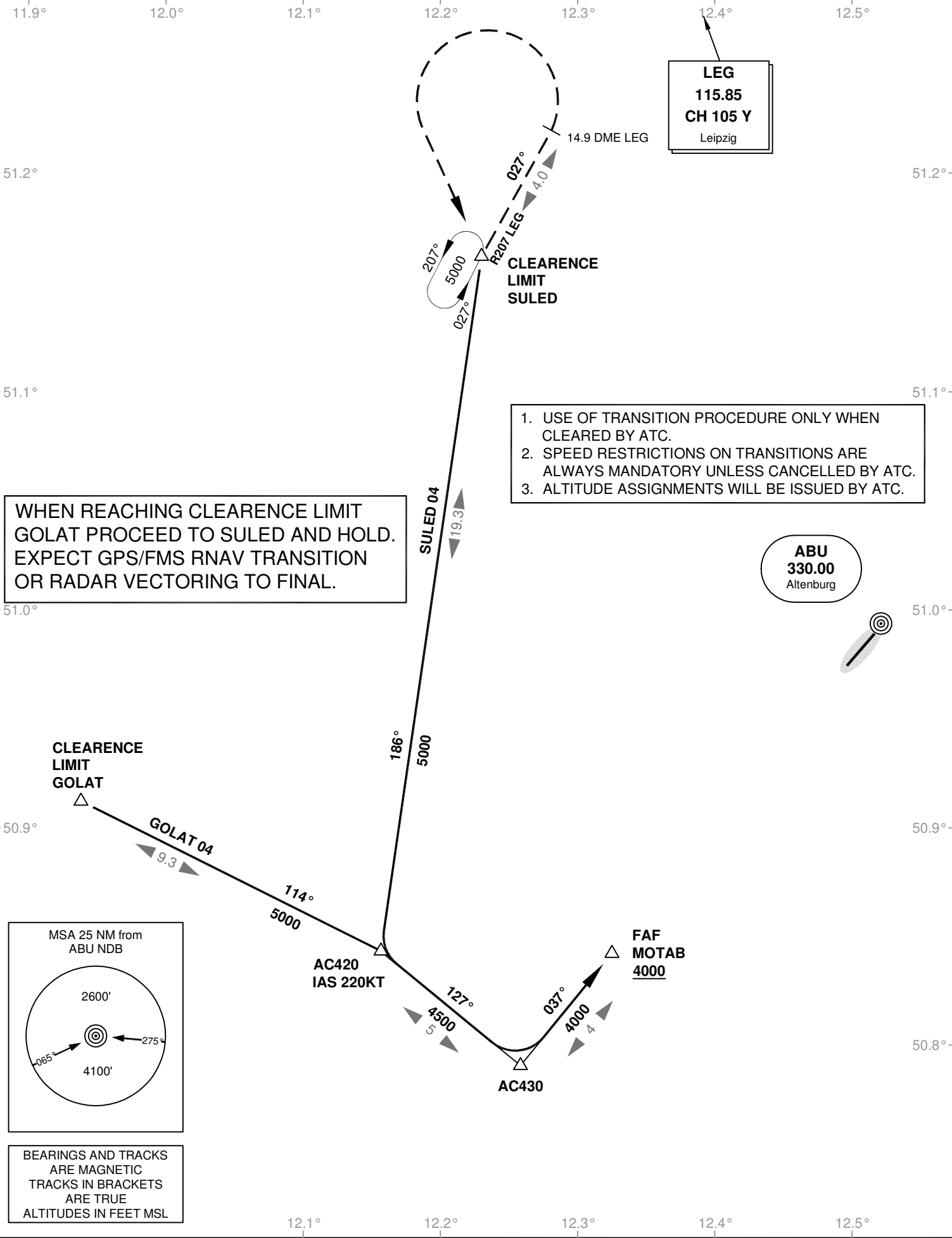
München Radar 131.120

München Radar 126.170

München Radar 124.050

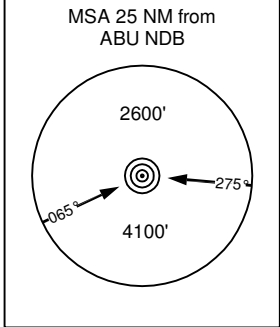
VAR: 2° E

München Radar 133.570



WHEN REACHING CLEARANCE LIMIT  
GOLAT PROCEED TO SULED AND HOLD.  
EXPECT GPS/FMS RNAV TRANSITION  
OR RADAR VECTORIZING TO FINAL.

1. USE OF TRANSITION PROCEDURE ONLY WHEN CLEARED BY ATC.
2. SPEED RESTRICTIONS ON TRANSITIONS ARE ALWAYS MANDATORY UNLESS CANCELLED BY ATC.
3. ALTITUDE ASSIGNMENTS WILL BE ISSUED BY ATC.



BEARINGS AND TRACKS  
ARE MAGNETIC  
TRACKS IN BRACKETS  
ARE TRUE  
ALTITUDES IN FEET MSL

Corrections: New chart

# VATSIM GERMANY Transition Chart

## Leipzig-Altenburg EDAC

Transition Altitude: 5000 ft

Altenburg Tower 123.579  
München Radar 126.170  
München Radar 133.570

München Radar 131.120  
München Radar 124.050

### TRANS Rwy 22

VAR: 2° E

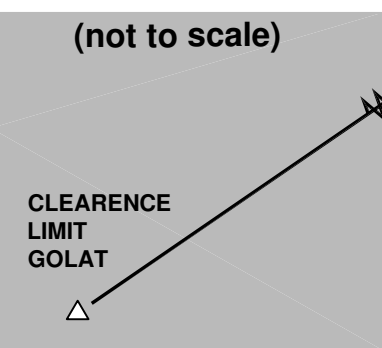
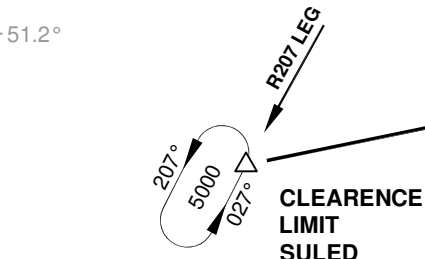
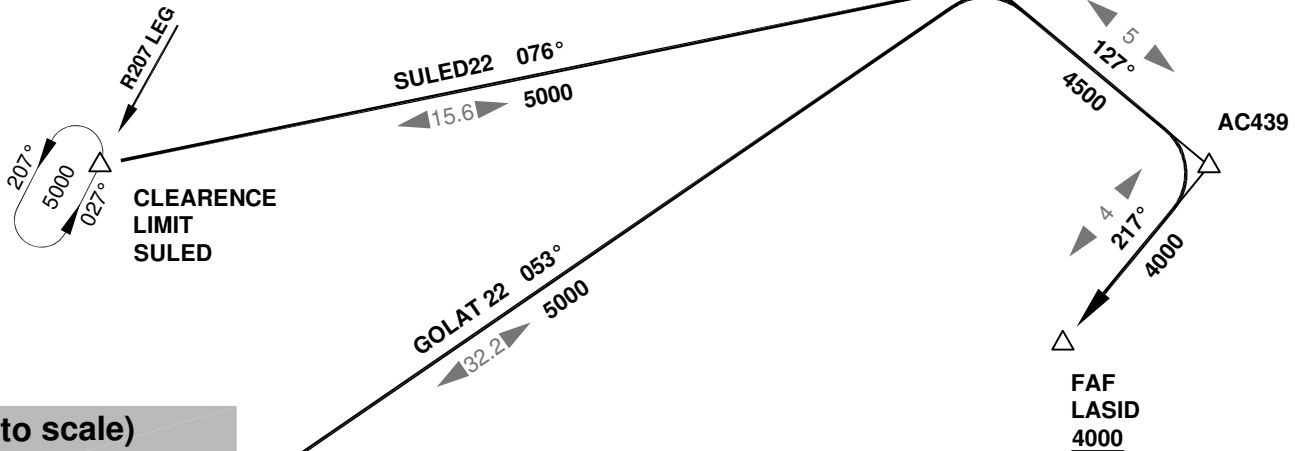
12.2° 12.3° 12.4° 12.5° 12.6° 12.7° 12.8°

51.3° 51.3°

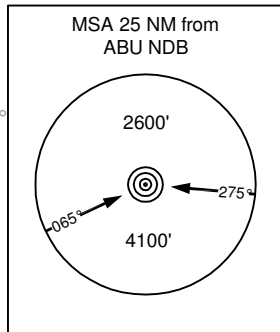
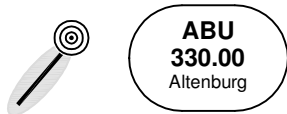
**LEG**  
115.85  
**CH 105 Y**  
Leipzig

1. USE OF TRANSITION PROCEDURE ONLY WHEN CLEARED BY ATC.
2. SPEED RESTRICTIONS ON TRANSITIONS ARE ALWAYS MANDATORY UNLESS CANCELLED BY ATC:
3. ALTITUDE ASSIGNMENTS WILL BE ISSUED BY ATC.

**AC429**  
IAS 220KT



WHEN REACHING CLEARENCE LIMIT GOLAT PROCEED TO SULED AND HOLD. EXPECT GPS/FMS RNAV TRANSITION OR RADAR VECTORIZING TO FINAL.



BEARINGS AND TRACKS ARE MAGNETIC  
TRACKS IN BRACKETS ARE TRUE  
ALTITUDES IN FEET MSL

51.1° 51.1° 51.0° 51.0° 50.9° 50.9° 50.8° 50.8°

12.2° 12.3° 12.4° 12.5° 12.6° 12.7° 12.8°

Corrections: New chart