

# VATSIM Germany Standard Instrument Departure Chart

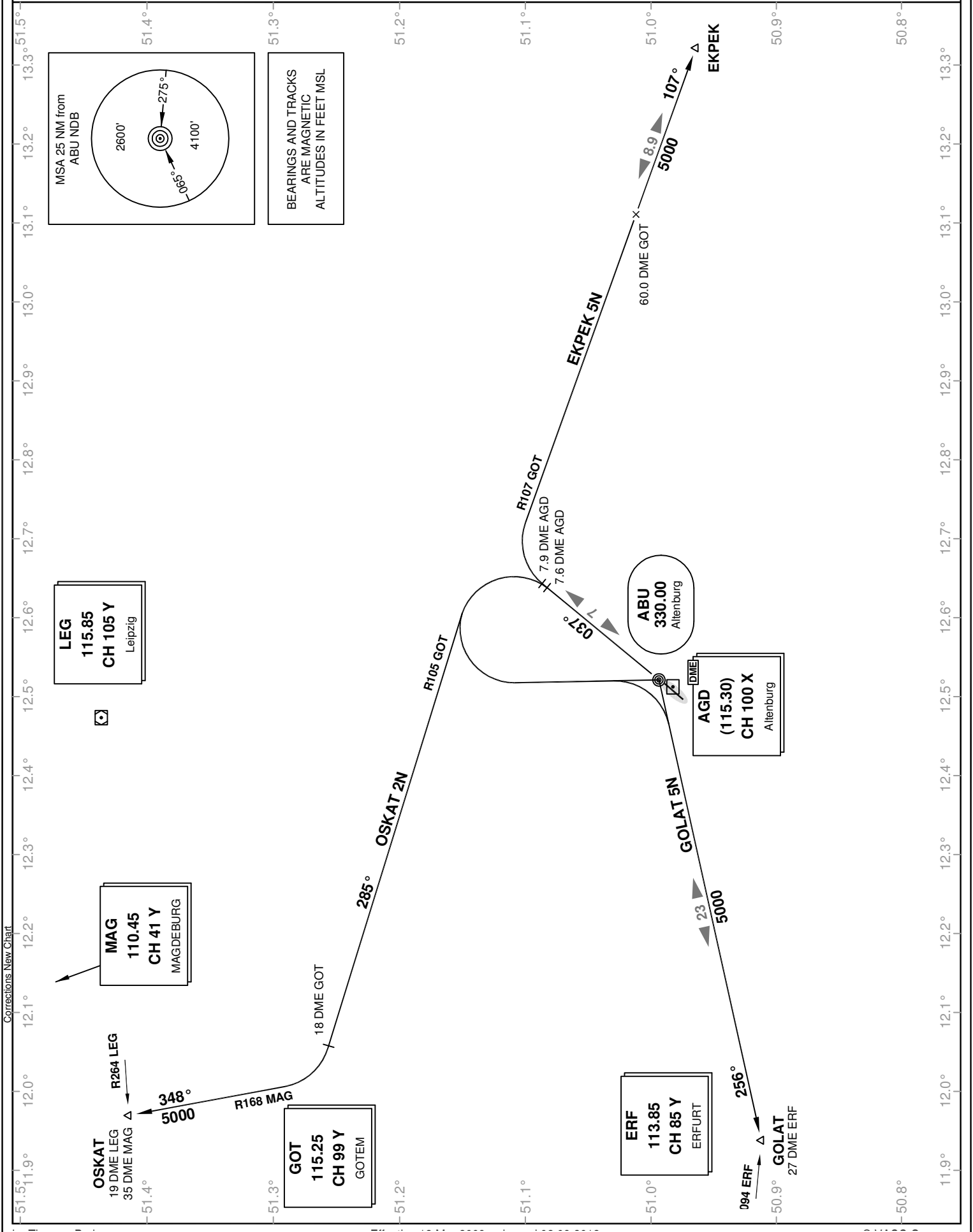
## LEIPZIG-ALTENBURG EDAC

### SID RWY 04

Transition Altitude: 5000 ft.

Altenburg Tower 123.570 München Radar 124.050  
München Radar 126.170  
München Radar 131.020  
München Radar 133.570

VAR: 2° E



Corrections New Chart

# VATSIM Germany Standard Instrument Departure Chart

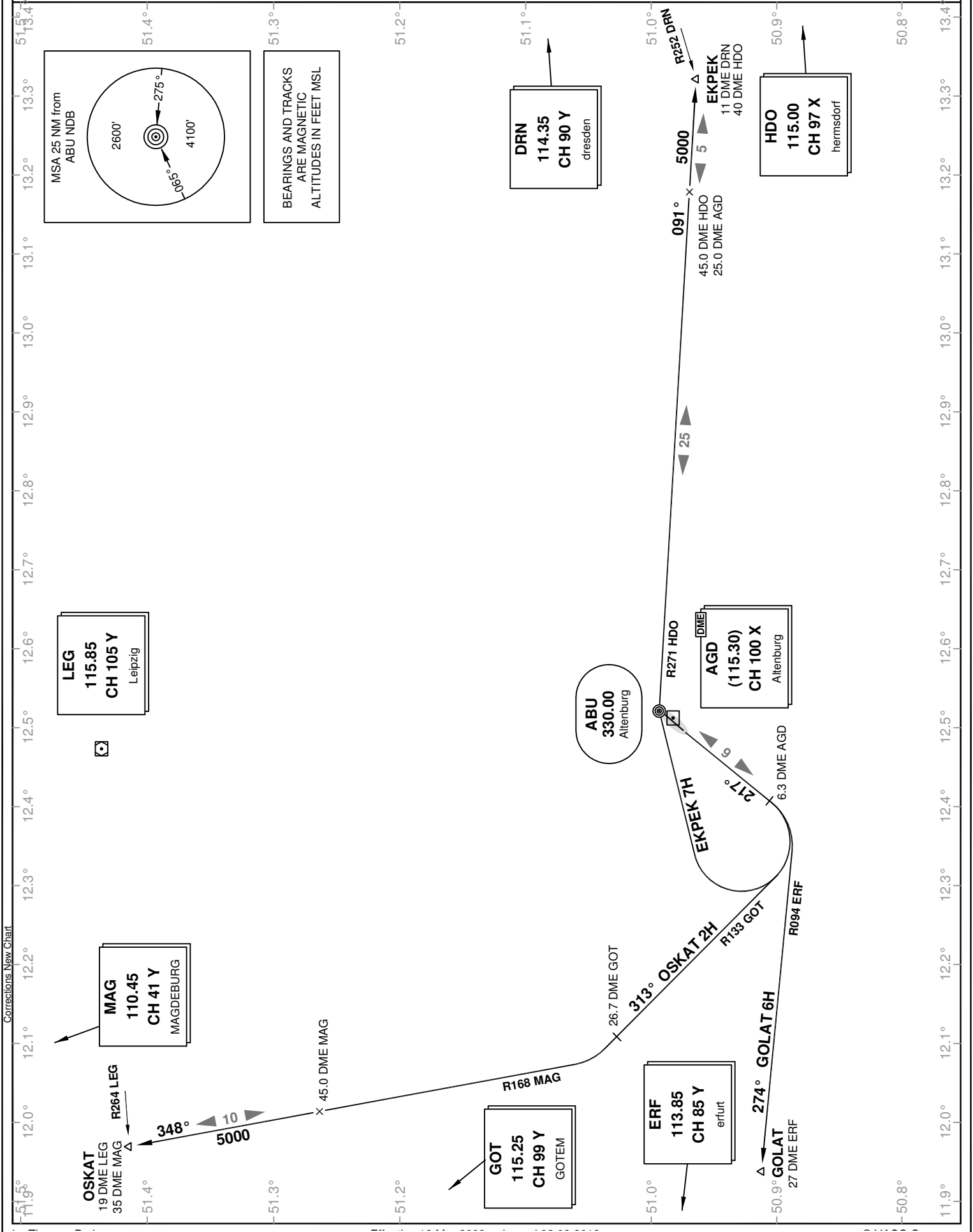
## LEIPZIG-ALTENBURG EDAC

### SID RWY 22

Transition Altitude: 5000 ft.

Altenburg Tower 123.570 München Radar 124.050  
München Radar 126.170  
München Radar 131.020  
München Radar 133.570

VAR: 2° E



**VATSIM Germany**  
**Standard Instrument Departure Chart**
**LEIPZIG-ALTENBURG**  
**EDAC**
**SID**  
**RWY 04 / 22**

Designator	Route	After Take-Off		Remarks
		Climb to	Contact	
<b>RWY 04</b>				
<b>EKPEK 5N</b>	<b>EKPEK FIVE NOVEMBER</b> On track 037° ABU to 7.9 DME AGD or 3000, whichever is later, RT, on track 107° to EKPEK. <b>GPS/FMS RNAV:</b> ABU[A1100+] - AC044[A3000+; R] - EKPEK	5000 ft	München Radar 126.170	1. Altitude restriction for departure turn only during activity of NLFS. PDG 5.1% (310 ft/NM) or more until passing 3000. 2. After 60.0 DME GOT BRNAV equipment necessary.
<b>GOLAT 5N</b>	<b>GOLAT FIVE NOVEMBER</b> On track 037° ABU to 7.6 DME AGD, LT, to ABU, on track 256° ABU to GOLAT. <b>GPS/FMS RNAV:</b> ABU[A1100+] - AC041[L] - AC045 - ABU[R] - GOLAT			
<b>OSKAT 2N</b>	<b>OSKAT TWO NOVEMBER</b> On track 037° ABU to 7.6 DME AGD, LT, on R105 GOT to 18.0 DME GOT, RT, on R168 MAG to OSKAT. <b>GPS/FMS RNAV:</b> ABU[A1100+] - AC041[L] - AC042 - AC043[R] - OSKAT			

**RWY 22**

<b>EKPEK 7H</b>	<b>EKPEK SEVEN HOTEL</b> On track 217° ABU to 6.3 DME AGD, RT, to ABU; on track 091° ABU / R271 HDO to EKPEK. <b>GPS/FMS RNAV:</b> [A1100+] - AC221[R] - AC224 - ABU[R] - EKPEK	5000 ft	München Radar 126.170	Not to be used during activity of NLFS.
<b>GOLAT 6H</b>	<b>GOLAT SIX HOTEL</b> On track 217° ABU to 6.3 DME AGD, RT, on R094 ERF to GOLAT. <b>GPS/FMS RNAV:</b> [A1100+] - AC225[R] - GOLAT			
<b>OSKAT 2H</b>	<b>OSKAT TWO HOTEL</b> On track 217° ABU to 6.3 DME AGD, RT, on R133 GOT to 26.7 DME GOT, RT, on R168 MAG to OSKAT. <b>GPS/FMS RNAV:</b> [A1100+] - AC221[R] - AC222 - AC223[R] - OSKAT			

(Sample: AC221 fly-over way point)

\* Frequencies in brackets are optional.

<b>Contact München Radar immediately after take-off.</b>
--