

VATSIM Germany Aerodrome Chart

Leipzig-ALtenburg EDAC

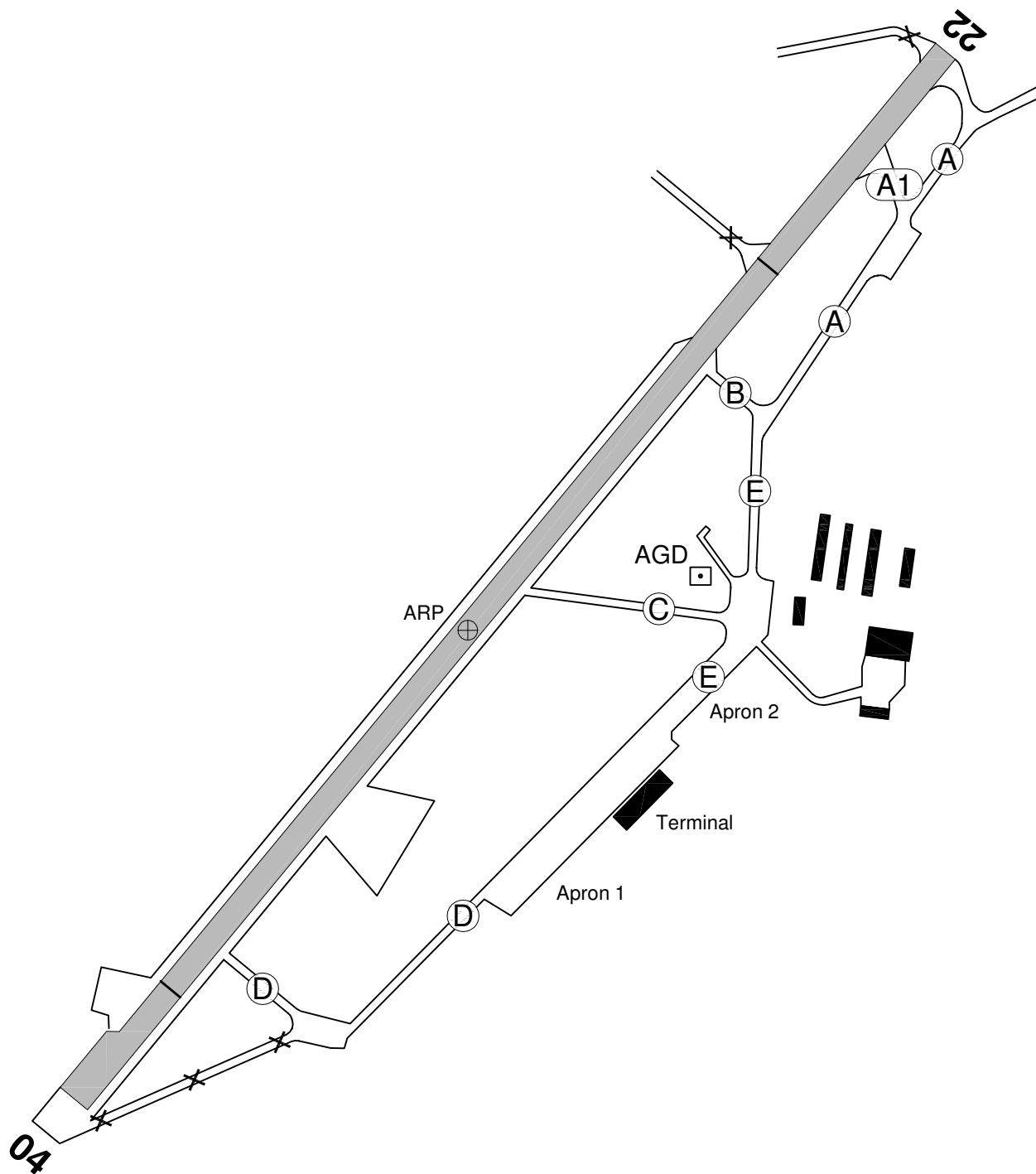
Aerodrome Elevation: 640 feet

Tower 123.570

N 50° 58' 54.54"
E012° 30' 22.90"

ARP: 626 ft

ABU 



Corrections New Chart

VATSIM Germany Standard Instrument Departure Chart

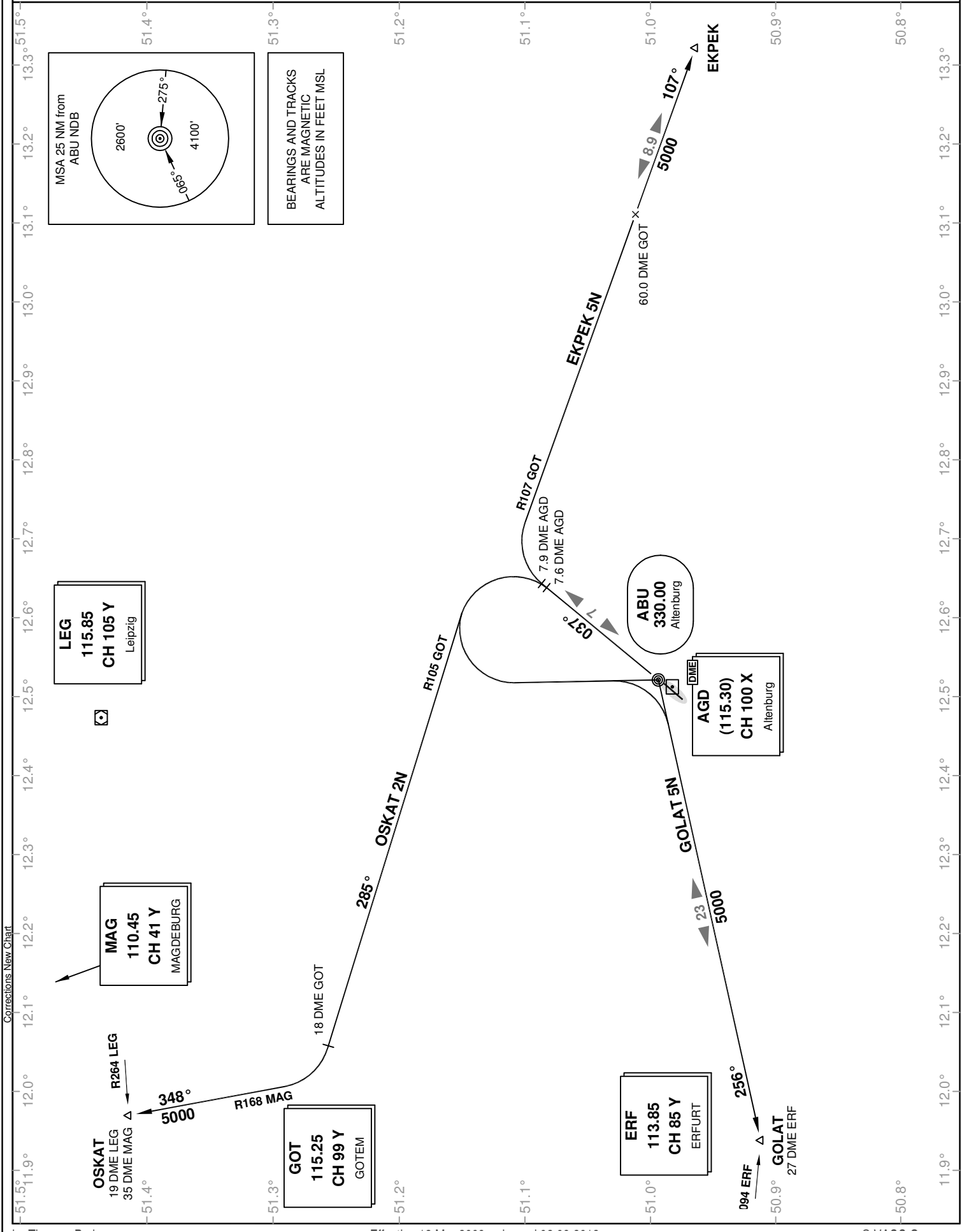
LEIPZIG-ALTENBURG EDAC

SID RWY 04

Transition Altitude: 5000 ft.

Altenburg Tower 123.570 München Radar 124.050
München Radar 126.170
München Radar 131.020
München Radar 133.570

VAR: 2° E



VATSIM Germany Standard Instrument Departure Chart

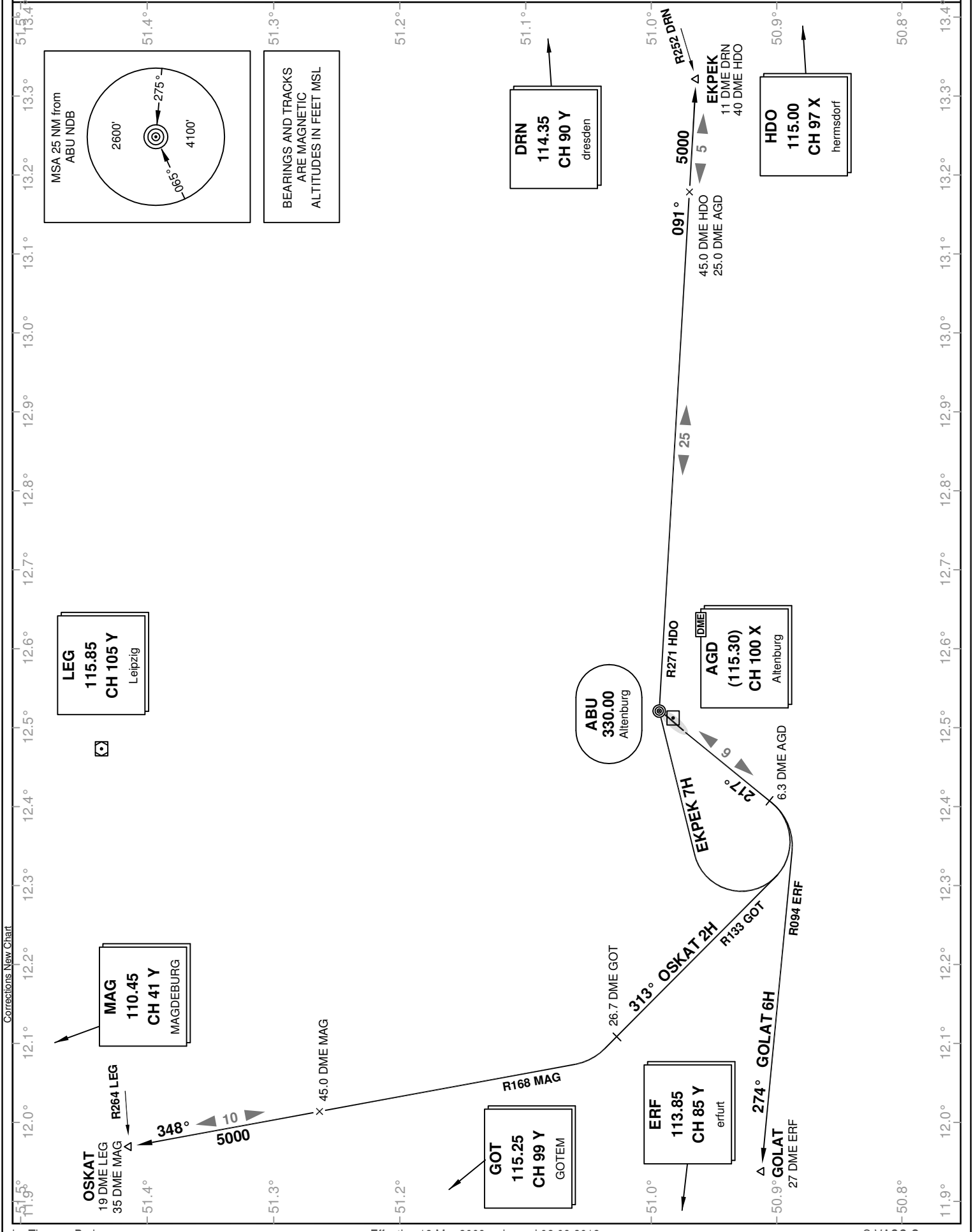
LEIPZIG-ALTENBURG EDAC

SID RWY 22

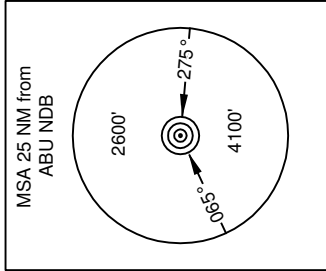
Transition Altitude: 5000 ft.

Altenburg Tower 123.570 München Radar 124.050
München Radar 126.170
München Radar 131.020
München Radar 133.570

VAR: 2° E



Corrections New Chart



BEARINGS AND TRACKS ARE MAGNETIC ALTITUDES IN FEET MSL

LEG
115.85
CH 105 Y
Leipzig

MAG
110.45
CH 41 Y
MAGDEBURG

GOT
115.25
CH 99 Y
GOTEM

ERF
113.85
CH 85 Y
erfurt

DRN
114.35
CH 90 Y
dresden

HDO
115.00
CH 97 X
hermsdorf

ABU
330.00
Altendorf

AGD
(115.30)
CH 100 X
Altendorf

VATSIM Germany
Standard Instrument Departure Chart

LEIPZIG-ALTENBURG
EDAC

SID
RWY 04 / 22

Designator	Route	After Take-Off		Remarks
		Climb to	Contact	
RWY 04				
EKPEK 5N	EKPEK FIVE NOVEMBER On track 037° ABU to 7.9 DME AGD or 3000, whichever is later, RT, on track 107° to EKPEK. GPS/FMS RNAV: ABU[A1100+] - AC044[A3000+; R] - EKPEK	5000 ft	München Radar 126.170	1. Altitude restriction for departure turn only during activity of NLFS. PDG 5.1% (310 ft/NM) or more until passing 3000. 2. After 60.0 DME GOT BRNAV equipment necessary.
GOLAT 5N	GOLAT FIVE NOVEMBER On track 037° ABU to 7.6 DME AGD, LT, to ABU, on track 256° ABU to GOLAT. GPS/FMS RNAV: ABU[A1100+] - AC041[L] - AC045 - ABU[R] - GOLAT			
OSKAT 2N	OSKAT TWO NOVEMBER On track 037° ABU to 7.6 DME AGD, LT, on R105 GOT to 18.0 DME GOT, RT, on R168 MAG to OSKAT. GPS/FMS RNAV: ABU[A1100+] - AC041[L] - AC042 - AC043[R] - OSKAT			

RWY 22

EKPEK 7H	EKPEK SEVEN HOTEL On track 217° ABU to 6.3 DME AGD, RT, to ABU; on track 091° ABU / R271 HDO to EKPEK. GPS/FMS RNAV: [A1100+] - AC221[R] - AC224 - ABU[R] - EKPEK	5000 ft	München Radar 126.170	Not to be used during activity of NLFS.
GOLAT 6H	GOLAT SIX HOTEL On track 217° ABU to 6.3 DME AGD, RT, on R094 ERF to GOLAT. GPS/FMS RNAV: [A1100+] - AC225[R] - GOLAT			
OSKAT 2H	OSKAT TWO HOTEL On track 217° ABU to 6.3 DME AGD, RT, on R133 GOT to 26.7 DME GOT, RT, on R168 MAG to OSKAT. GPS/FMS RNAV: [A1100+] - AC221[R] - AC222 - AC223[R] - OSKAT			

(Sample: AC221 fly-over way point)

* Frequencies in brackets are optional.

Contact München Radar immediately after take-off.

VATSIM Germany Standard Instrument Arrival Chart

Leipzig-Altenburg EDAC

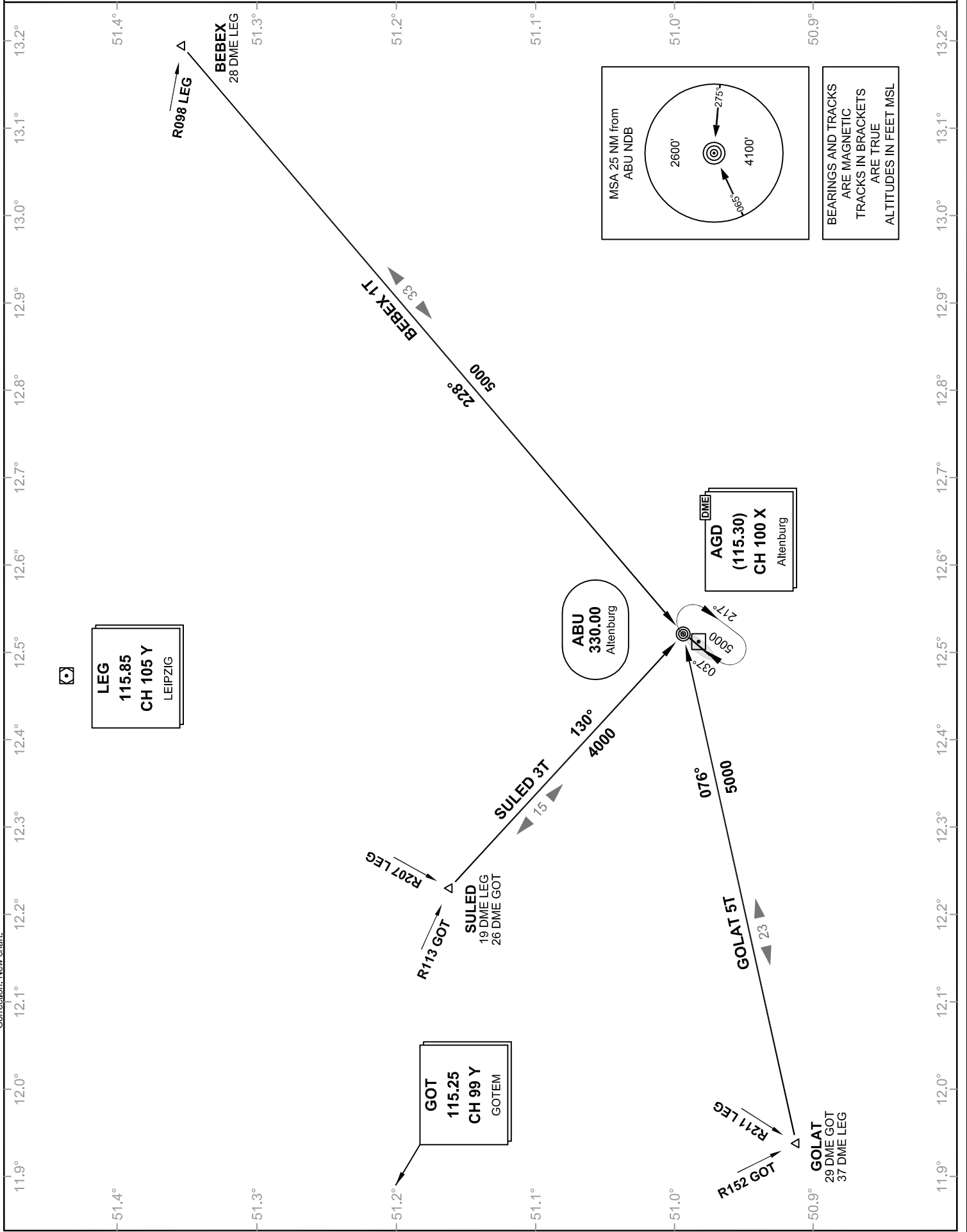
Transition Altitude: 5000 ft.

München Radar 131.020
München Radar 133.570
München Radar 126.170
Altenburg Tower 123.579

STAR RWY 04 / 22

VAR: 2° E

München Radar 124.050



Correction: New chart.

VATSIM GERMANY Transition Chart

Leipzig-Altenburg EDAC

Transition Altitude: 5000 ft

Altenburg Tower 123.579

München Radar 131.120

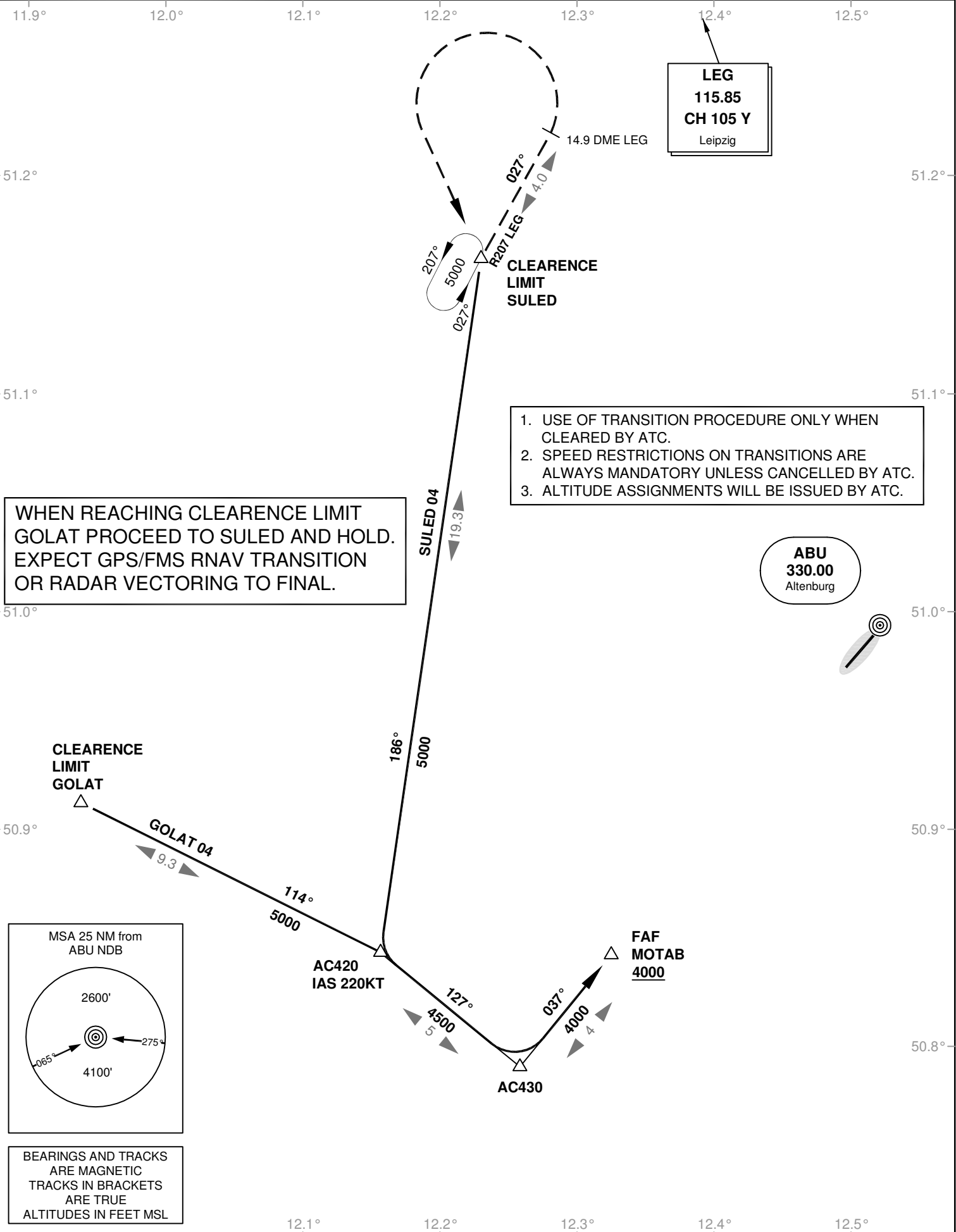
München Radar 126.170

München Radar 124.050

VAR: 2° E

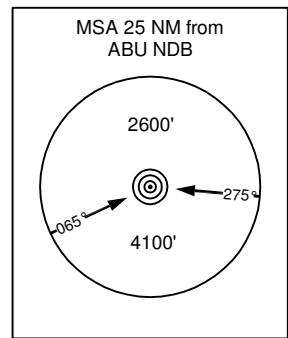
München Radar 133.570

TRANS Rwy 04



WHEN REACHING CLEARANCE LIMIT
GOLAT PROCEED TO SULED AND HOLD.
EXPECT GPS/FMS RNAV TRANSITION
OR RADAR VECTORIZING TO FINAL.

1. USE OF TRANSITION PROCEDURE ONLY WHEN CLEARED BY ATC.
2. SPEED RESTRICTIONS ON TRANSITIONS ARE ALWAYS MANDATORY UNLESS CANCELLED BY ATC.
3. ALTITUDE ASSIGNMENTS WILL BE ISSUED BY ATC.



BEARINGS AND TRACKS
ARE MAGNETIC
TRACKS IN BRACKETS
ARE TRUE
ALTITUDES IN FEET MSL

Corrections: New chart

VATSIM GERMANY Transition Chart

Leipzig-Altenburg EDAC

Transition Altitude: 5000 ft

Altenburg Tower 123.579

München Radar 131.120

München Radar 126.170

München Radar 124.050

VAR: 2° E

München Radar 133.570

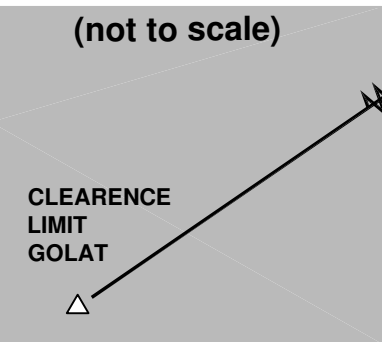
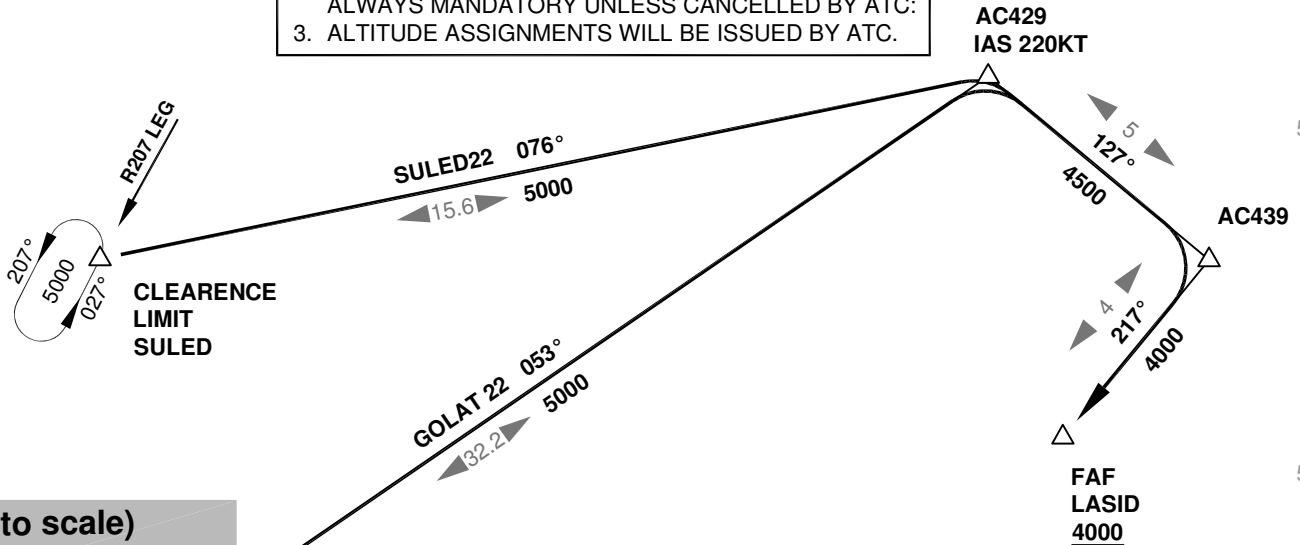
TRANS Rwy 22

12.2° 12.3° 12.4° 12.5° 12.6° 12.7° 12.8°

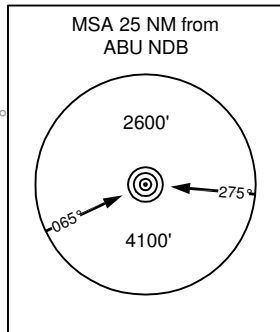
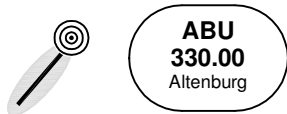
51.3° 51.3°

LEG
115.85
CH 105 Y
Leipzig

1. USE OF TRANSITION PROCEDURE ONLY WHEN CLEARED BY ATC.
2. SPEED RESTRICTIONS ON TRANSITIONS ARE ALWAYS MANDATORY UNLESS CANCELLED BY ATC:
3. ALTITUDE ASSIGNMENTS WILL BE ISSUED BY ATC.



WHEN REACHING CLEARANCE LIMIT GOLAT PROCEED TO SULED AND HOLD. EXPECT GPS/FMS RNAV TRANSITION OR RADAR VECTORIZING TO FINAL.



BEARINGS AND TRACKS ARE MAGNETIC
TRACKS IN BRACKETS ARE TRUE
ALTITUDES IN FEET MSL

50.8° 50.8°

12.2° 12.3° 12.4° 12.5° 12.6° 12.7° 12.8°

Corrections: New chart

VATSIM Germany Instrument Approach Chart

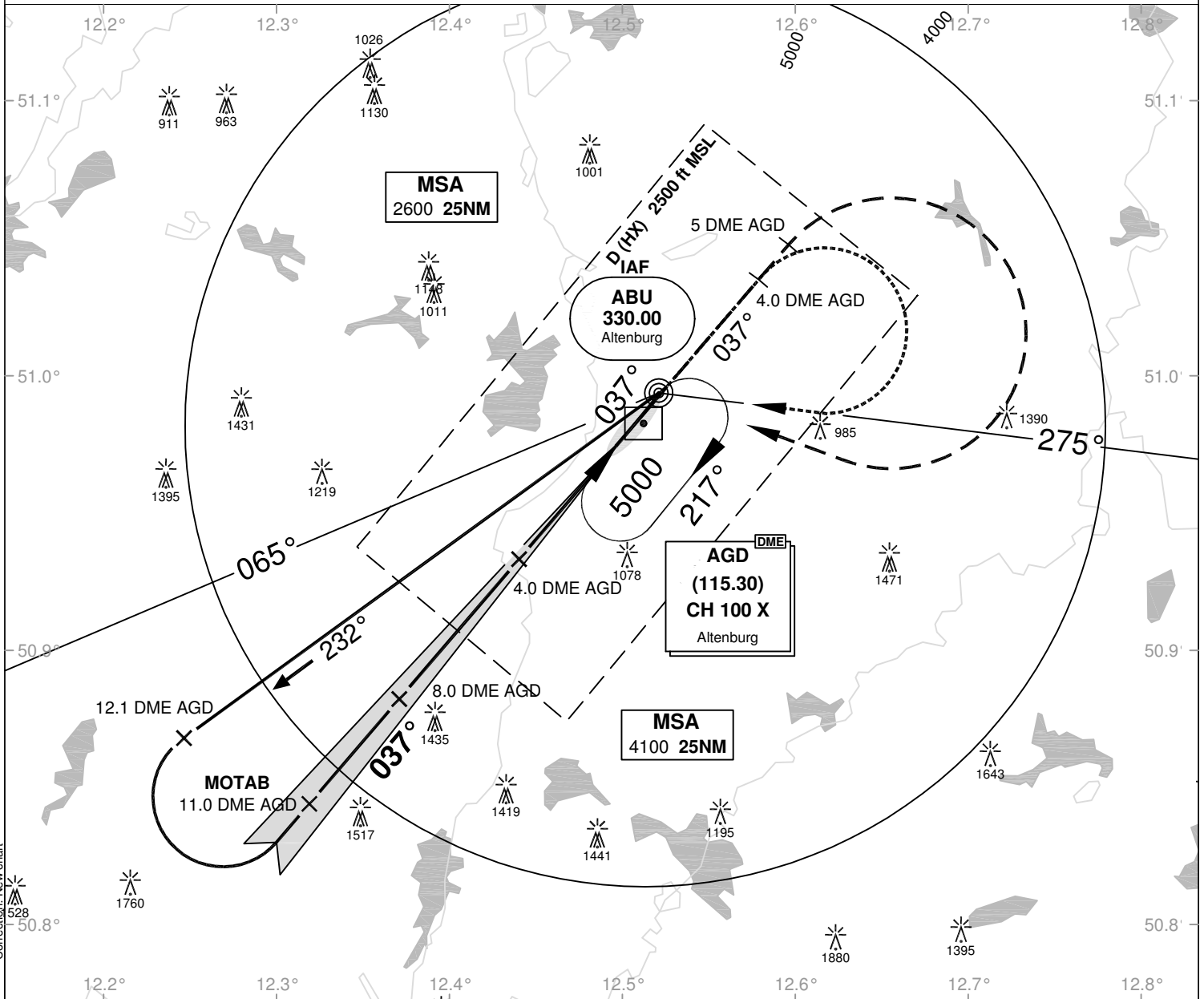
Leipzig-Altenburg EDAC

Elevation: THR04 ELEV 605

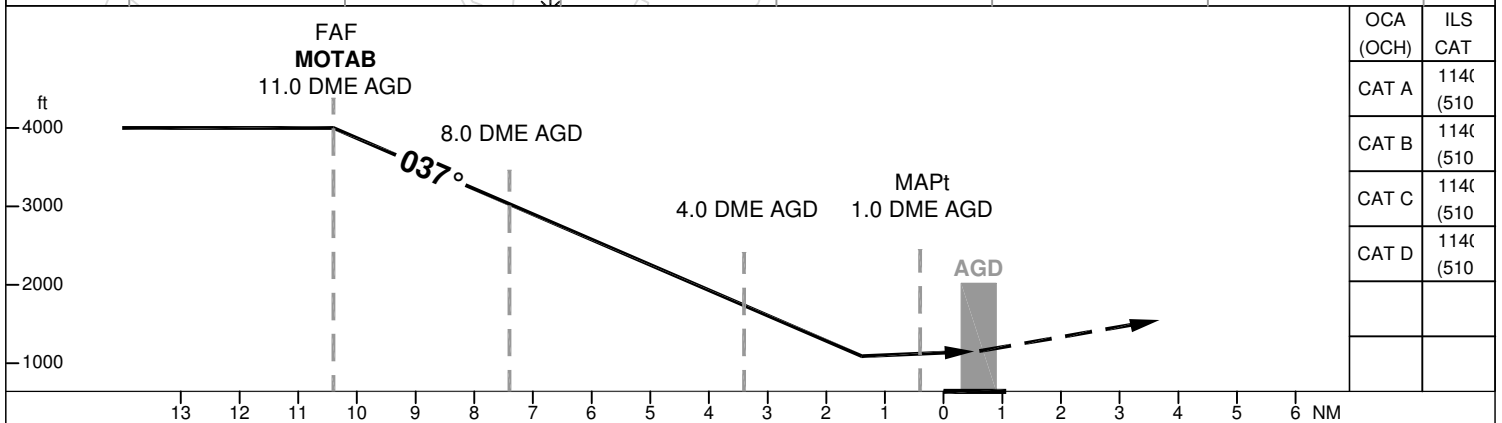
Altenburg Tower 133.570 München Radar 124.050
 München Radar 126.170
 München Radar 131.020
 München Radar 133.570

**NDB
RWY 04**

VAR: 2°E



Correction: New chart



MISSED APPROACH: On track 037° ABU to 5.0 DME AGD, RT to ABU NDB climbing 5000.

DME AGD	10	9	8	7	6	5	4	3	2
DME THR	9.4	8.4	7.4	6.4	5.4	4.4	3.4	2.4	1.4
ALTITUDE	3690	3370	3050	2730	2410	2090	1788	1460	1140

GS	kt	80	100	120	140	160	180
4 DME AGD-1 DME AGD (3 NM)	MIN:SEC	2:15	1:48	1:30	1:17	1:08	1:00
Rate of descent (5.2%)	ft / MIN	420	530	640	740	850	960

LOC-DME: Timing not authorized for defining the MAPt.

VATSIM Germany Instrument Approach Chart

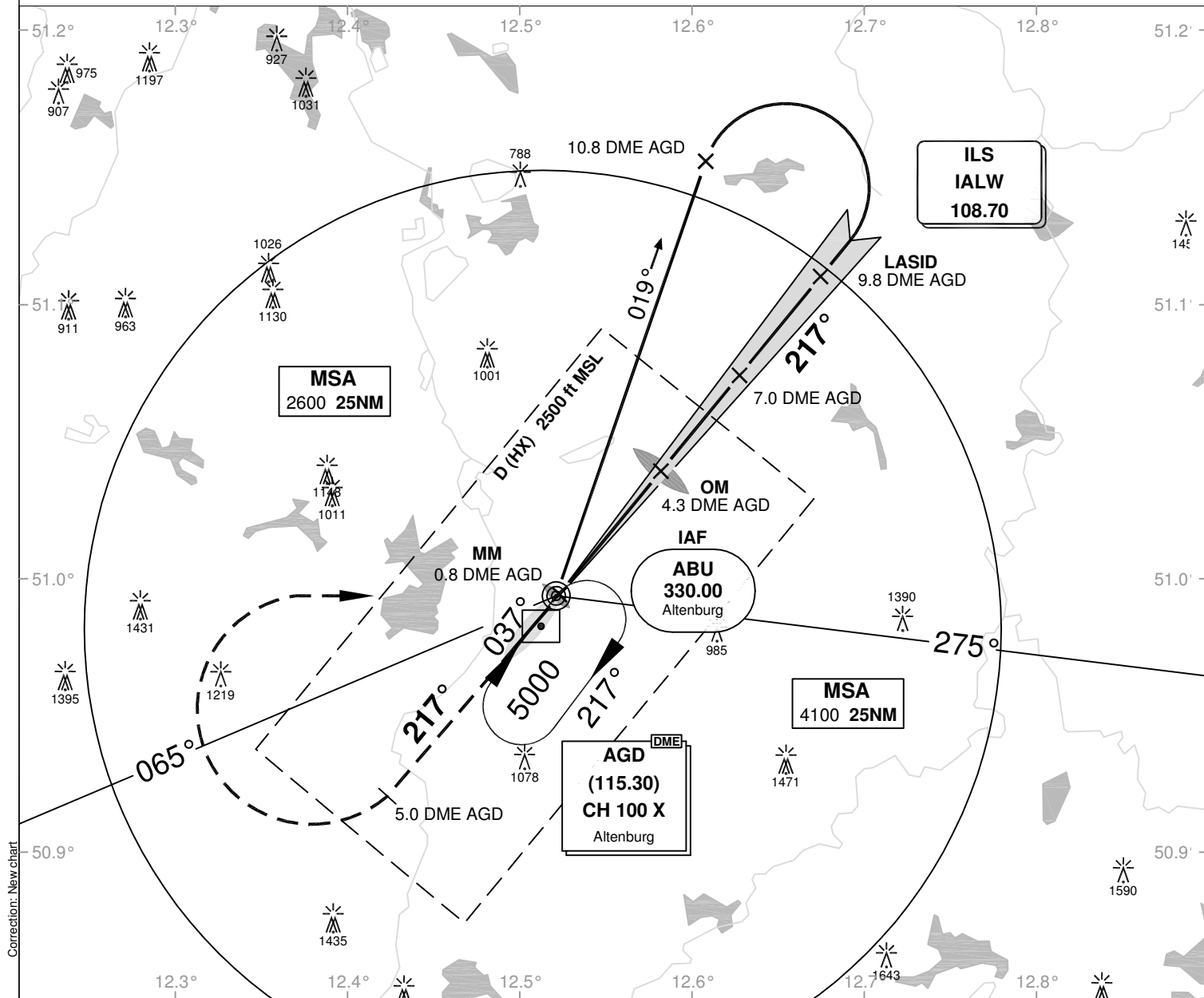
Leipzig-Altenburg EDAC

Elevation: THR22 ELEV 605

Altenburg Tower 133.570 München Radar 124.050
 München Radar 126.170
 München Radar 131.020
 München Radar 133.570

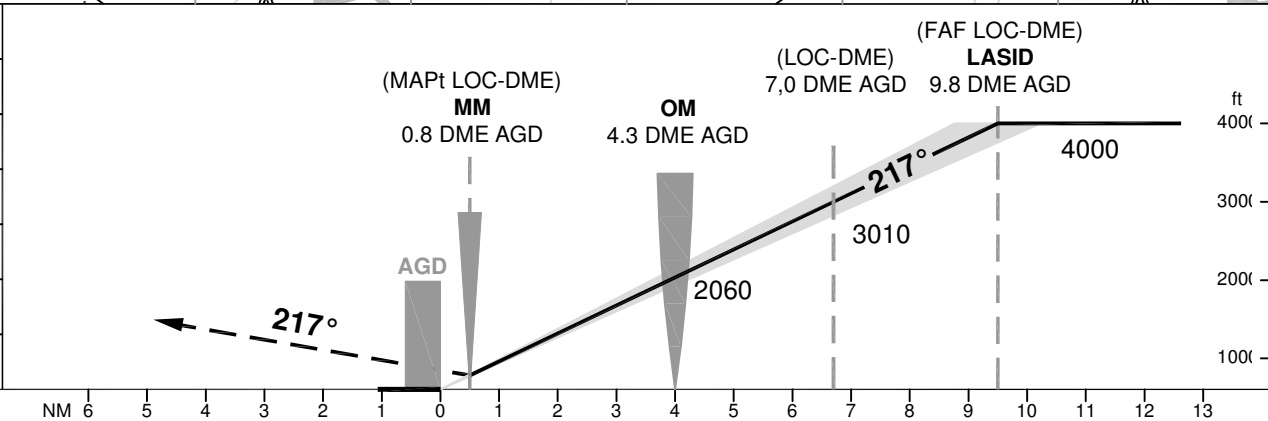
**ILS or LOC
RWY 22**

VAR: 2°E



Correction: New chart

OCA (OCH)	ILS CAT I	LOC DME
CAT A	772 (167)	1070 (470)
CAT B	783 (178)	1070 (470)
CAT C	793 (188)	1070 (470)
CAT D	804 (199)	1070 (470)



MISSED APPROACH: On track 217° ABU to 5.0 DME AGD, RT to ABU NDB climbing 5000.

DME AGD	2	3	4	5	6	7	8	9
DIST THR	1.7	2.7	3.7	4.7	5.7	6.7	7.7	8.7
ALTITUDE	1260	1610	1960	2310	2660	3010	3360	3710

GS	kt	80	100	120	140	160	180
OM - THR (4.0 NM)	MIN:SEC	3:00	2:24	2:00	1:43	1:30	1:20
Rate of descent (5.8%)	ft / MIN	470	580	700	820	930	1050

Timing not authorized for defining the MAPt.

VATSIM Germany Instrument Approach Chart

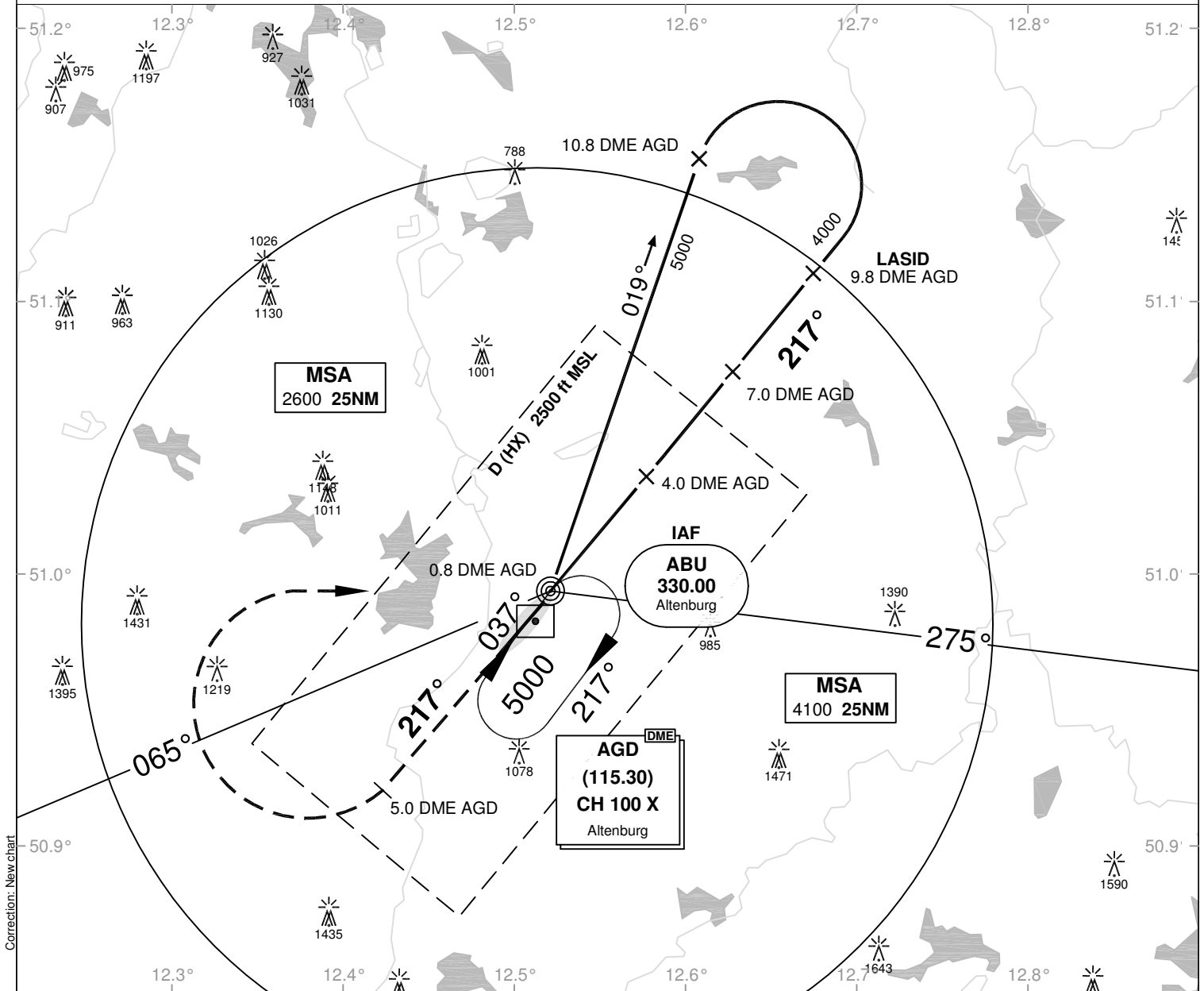
Leipzig-Altenburg EDAC

Elevation: THR22 ELEV 605

Altenburg Tower 133.570 München Radar 124.050
München Radar 126.170
München Radar 131.020
München Radar 133.570

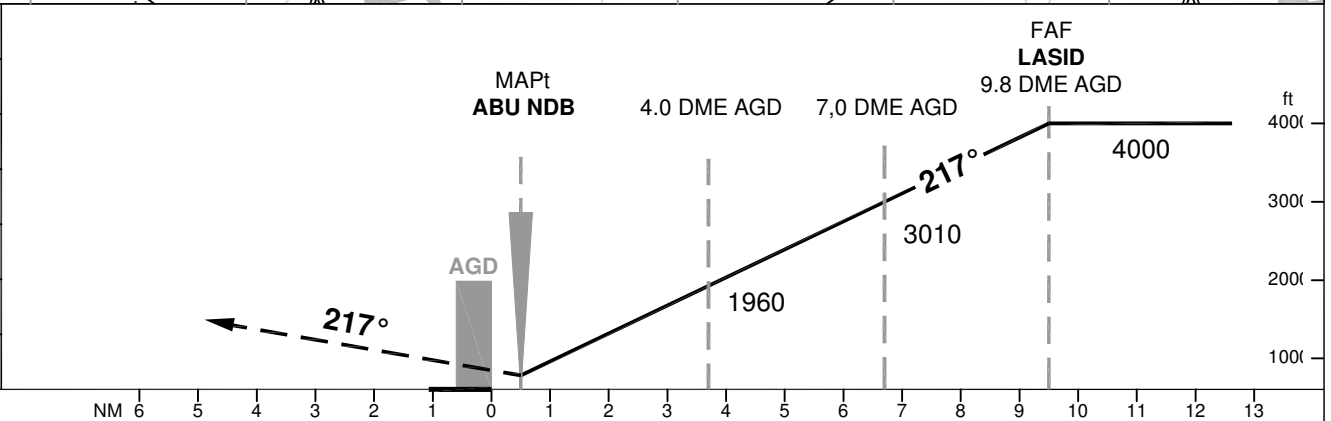
VAR: 2°E

NDB RWY 22



Correction: New chart

OCA (OCH)	NDB-DME
CAT A	1070 (470)
CAT B	1070 (470)
CAT C	1070 (470)
CAT D	1070 (470)



MISSED APPROACH: On track 217° ABU to 5.0 DME AGD, RT to ABU NDB climbing 5000.

DME AGD	2	3	4	5	6	7	8	9		
DIST THR	1.7	2.7	3.7	4.7	5.7	6.7	7.7	8.7		
ALTITUDE	1260	1610	1960	2310	2660	3010	3360	3710		

GS	kt	80	100	120	140	160	180
OM - THR (4.0 NM)	MIN:SEC	3:00	2:24	2:00	1:43	1:30	1:20
Rate of descent (5.8%)	ft / MIN	470	580	700	820	930	1050

Timing not authorized for defining the MAPt.