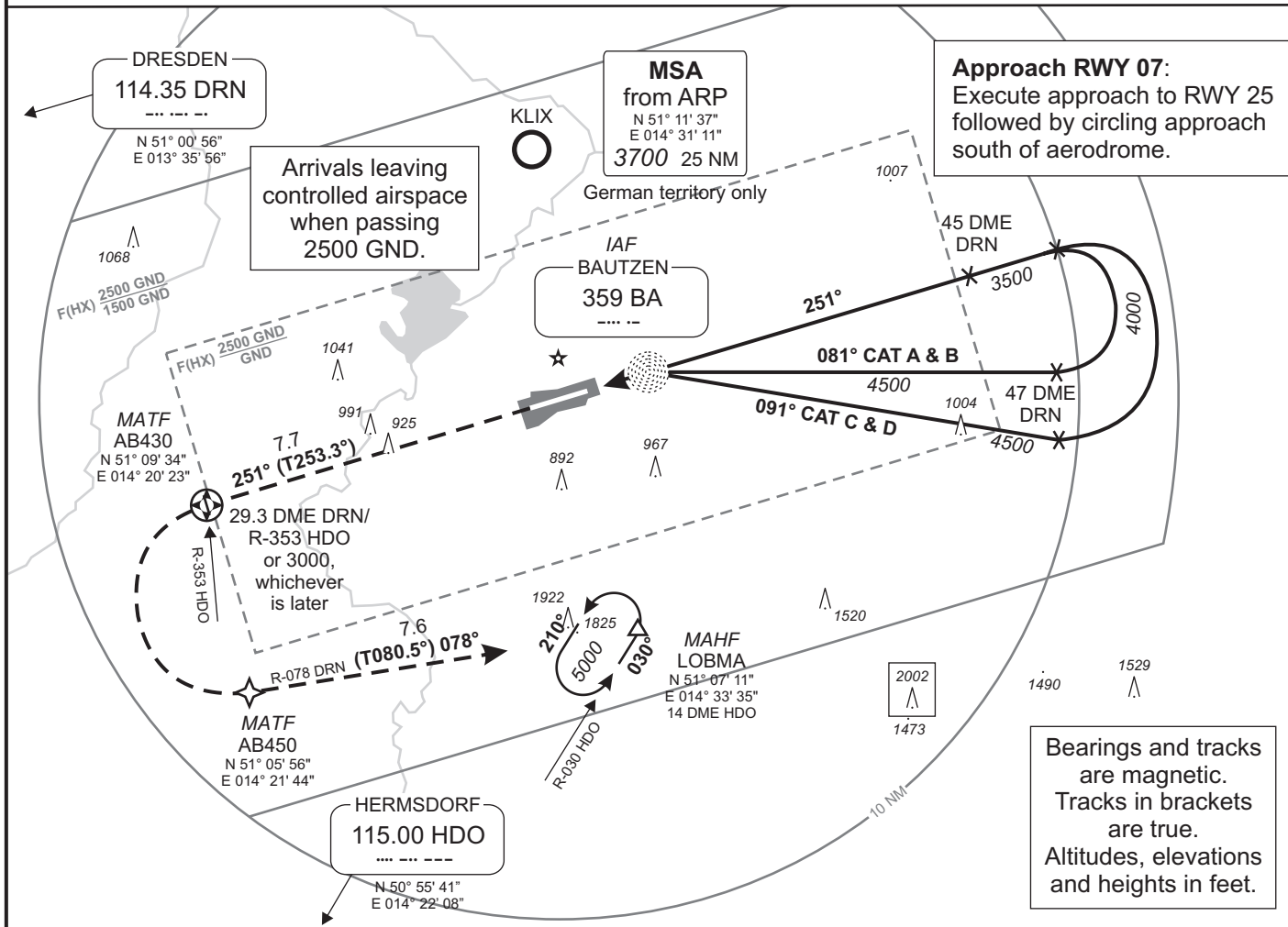
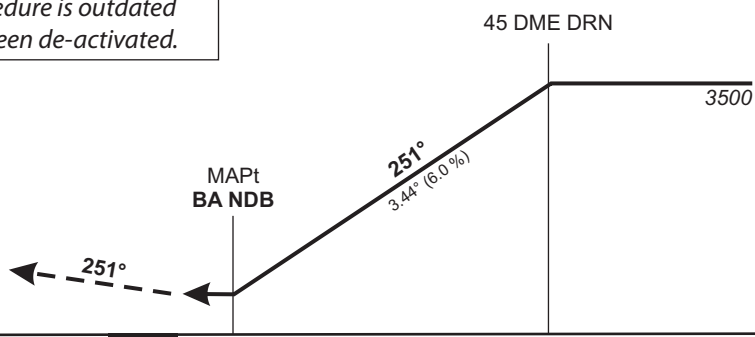


MÜNCHEN RADAR	125.620 126.170 131.020 129.100	INFO	120.600	Mag. Variation	2° E
				Elevation	568'
				Transition altitude	5000'
				Transition level	by ATC

Missed approach procedure **NON-RNAV:** Climb straight ahead to 5000'; when passing 3000' or R-353 HDO/39 DME DRN, whichever is later, LT to intercept R-078 DRN to LOBMA.
RNAV (GPS): Climb on track 251° to 5000'; when passing 3000' or AB430, whichever is later, LT, via AB450 on track 078° to LOBMA.
AB430 [A3000+; L] - AB450 - LOBMA [A5000]



Note that this procedure is outdated since BA NDB has been de-activated.



OCA (OCH)	A	B	C	D
NDB-DME	950 (420)	950 (420)	950 (420)	950 (420)
CIRCLING*	1190	1270	2320	2320

DRN DME	38	39	40	41	42	43	44	45
ALTITUDE	950	1310	1680	2040	2410	2770	3130	3500

GS	kts	80	100	120	140	160	180
Rate of descent (6.0 %)	ft / MIN	490	610	730	850	970	1090

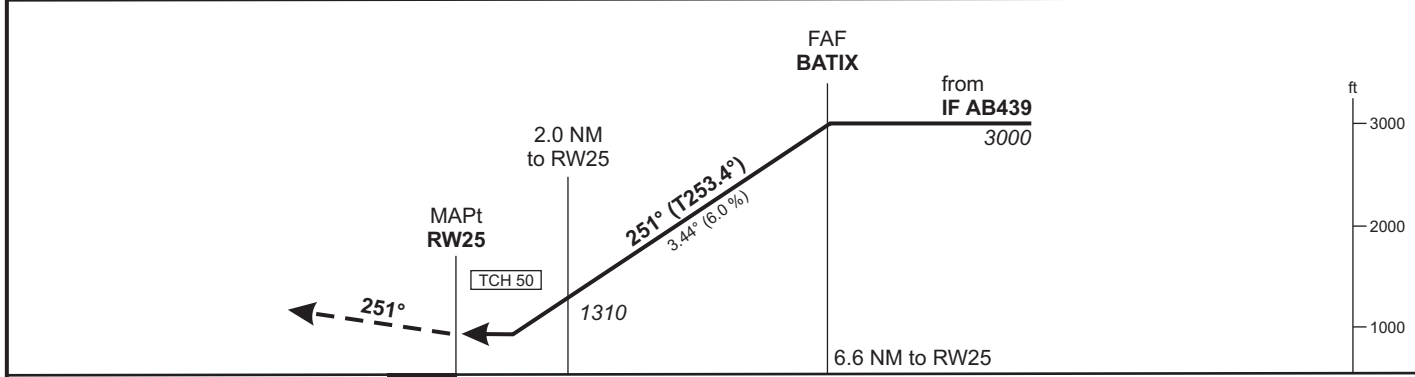
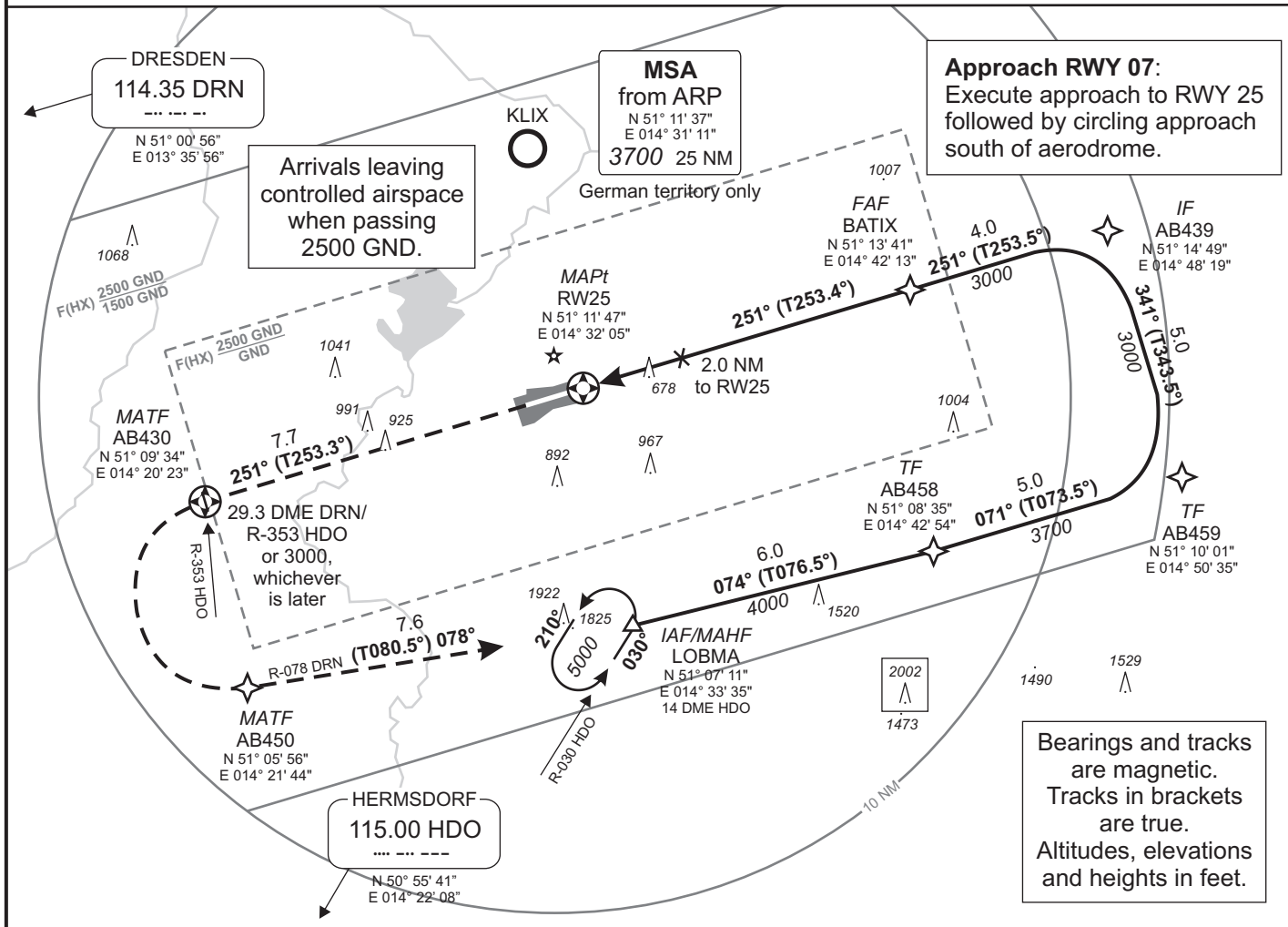
* South of aerodrome only.

Revision: 2010-05-21. Changes: initial revision.

Valid for flight simulation use only - do not use for real life navigation

MÜNCHEN RADAR	125.620 126.170 131.020 129.100	INFO	120.600	Mag. Variation	2° E
				Elevation	568'
				Transition altitude	5000'
				Transition level	by ATC

Missed approach procedure **NON-RNAV:** Climb straight ahead to 5000'; when passing 3000' or R-353 HDO/39 DME DRN, whichever is later, LT to intercept R-078 DRN to LOBMA.
RNAV (GPS): Climb on track 251° to 5000'; when passing 3000' or AB430, whichever is later, LT, via AB450 on track 078° to LOBMA.
AB430 [A3000+; L] - AB450 - LOBMA [A5000]



OCA (OCH)	A	B	C		
GPS	930 (400)	930 (400)	930 (400)		
CIRCLING*	1190	1270	2320		

DIST THR / RW25	1	2	3	4	5	6		
ALTITUDE	950	1310	1680	2040	2410	2770		

Timing not authorized for defining the MAPt.

GS	kts	80	100	120	140	160	180
BATIX-RW25 (6.6 NM)	MIN:SEC	4:59	3:59	3:19	2:51	2:29	2:13
Rate of descent (6.0 %)	ft / MIN	490	610	730	850	970	1090

* South of aerodrome only.