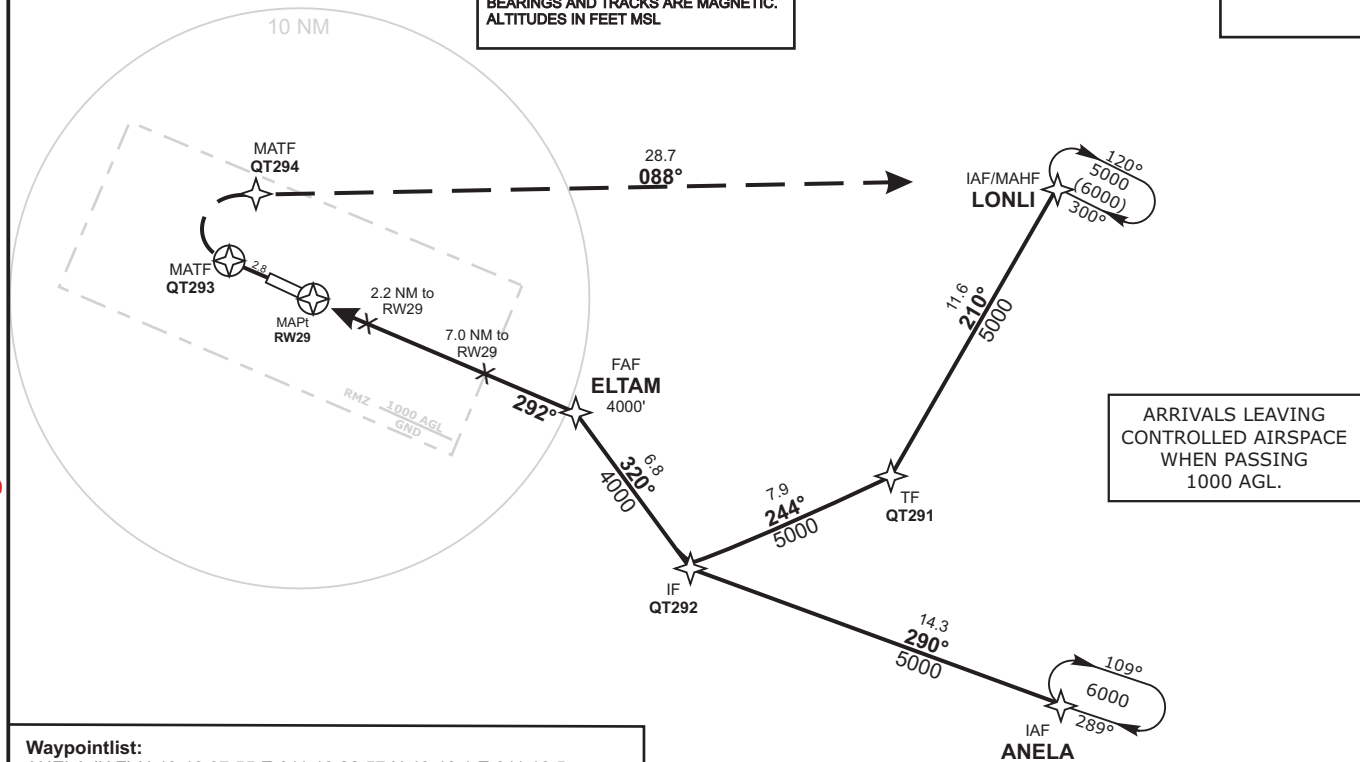


TRANS LEVEL: BY ATC TRANS ALT: 5000'	HASSFURT Info 119.80	MÜNCHEN Radar 129.52	MÜNCHEN Radar 129.10
VOR/DME BAY 110.6	Final Apch Course 292°	FAF ELTAM 4000'	OCH RELATED TO THR29 ELEV 720'
Apt.Elev. 718'			

MISSED APCH:
RNAV (GPS): Climb on track 292° to QT293, RT, via QT294 on track 088° to LONLI climbing to 5000.
 QT293[R] - QT294 -LONLI[A5000].

BEARINGS AND TRACKS ARE MAGNETIC.
 ALTITUDES IN FEET MSL

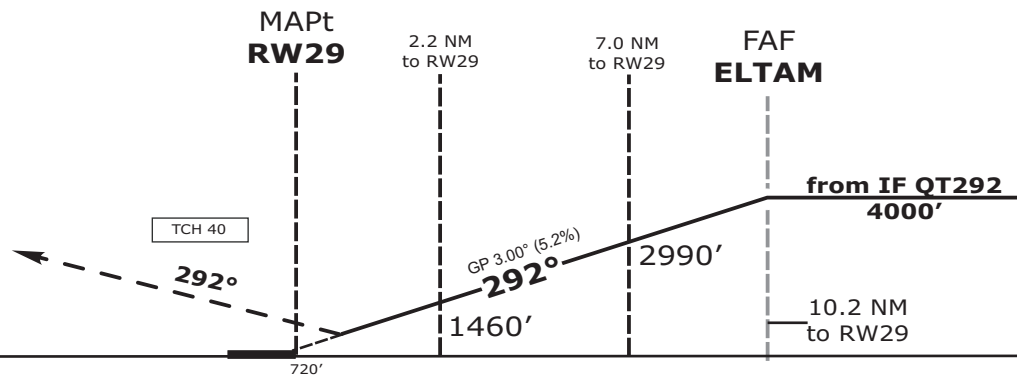


Waypointlist:

- ANELA (IAF) N 49 46 07.55 E 011 13 28.57 N 49 46.1 E 011 13.5
- QT291 (TF) N 49 54 36.88 E 011 04 09.85 N 49 54.6 E 011 04.2
- QT292 (IF) N 49 51 27.37 E 010 53 03.18 N 49 51.5 E 010 53.1
- ELTAM (FAF) N 49 56 53.60 E 010 46 37.42 N 49 56.9 E 010 46.6
- RW29 (MAPt) N 50 00 58.35 E 010 32 10.76 N 50 01.0 E 010 32.2
- QT293 (MATF) N 50 02 06.09 E 010 28 09.27 N 50 02.1 E 010 28.2
- QT294 (MATF) N 50 04 38.20 E 010 29 02.34 N 50 04.6 E 010 29.0
- LONLI (IAF/MAHF) N 50 04 29.06 E 011 13 34.99 N 50 04.5 E 011 13.6

Do not use for real life navigation!

Revision: 2014-12-11 - Change: Airspace F replaced by RMZ, note modified, note deleted



OCA (OCH)	A	B			DIST THR / RW29	2	3	4	5	6	7	8	9
LNAV	1140 (420)	1140 (420)			ALTITUDE	1400	1720	2040	2360	2680	2990	3310	3630
					GS	kts		80	100	120	140	160	
					ELTAM - RW29 (10.2 NM)	MIN:SEC	7:39	6:07	5:06	4:22	3:50		
					Timing not authorized for defining the MAPt.	Rate of descent (5.2%)	ft/MIN	420	530	640	740	840	