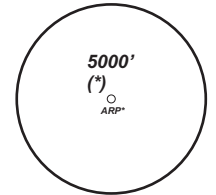


TRANS LEVEL: BY ATC TRANS ALT: 5000'	BAYREUTH Info 127.52	MÜNCHEN Radar 129.52
---	-------------------------	-------------------------

**ANELA 5Z - ANELA FIVE ZULU [ANEL5Z]**  
**KULOK 5Z - KULOK FIVE ZULU [KULO5Z]**  
**LONLI 5Z - LONLI FIVE ZULU [LONL5Z]**



MSA 25 NM from ARP  
(\*) German territory only

**LONLI**  
N50 04.5  
E011 13.6

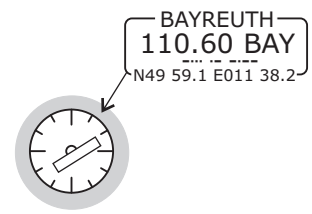
**LONLI 5Z**  
12.8  
5000  
6000\*

**KULOK**  
N50 04.4  
E011 37.8

**KULOK 5Z**  
13.6  
5000  
6000\*

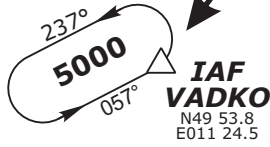
PARTS OF IFR PROFILES WITHIN  
AIRSPACE CLASS E.  
WATCH OUT FOR VFR TRAFFIC  
UNKNOWN TO ATC.

**\*OPERATIONAL ALTITUDES  
ARE DUE TO NLFS.**



Do not use for real life navigation!

HOLDING  
MAX IAS 170 KTS.



**ANELA 5Z**  
10.5  
4800  
6000\*

**ANELA**  
N49 46.1  
E011 13.5

