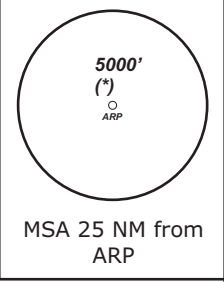


TRANS LEVEL: BY ATC TRANS ALT: 5000'	BAYREUTH Info 127.52	MÜNCHEN Radar 129.52	MÜNCHEN Radar 124.05
---	-------------------------	-------------------------	-------------------------

Apt Elev: 1601' Trans level: By ATC Trans alt: 5000'

KULOK 3R - KULOK THREE ROMEO (10.0 NM)
KULOK 2G - KULOK TWO GOLF (12.8 NM)



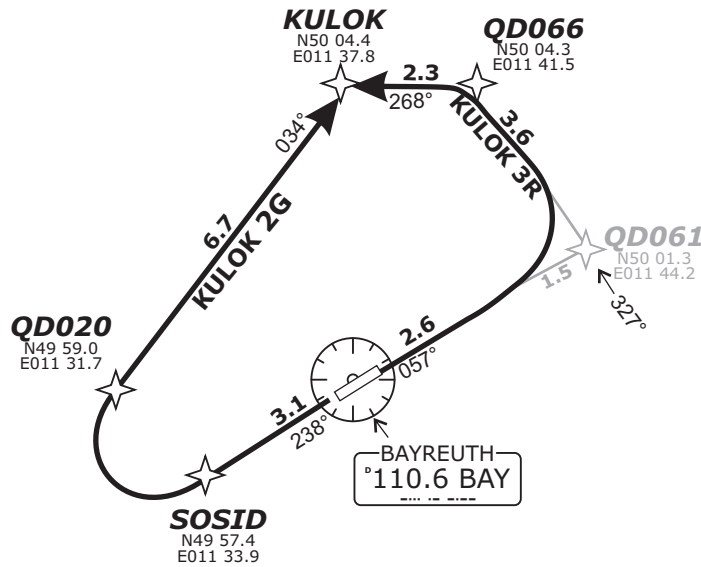
BEARINGS AND TRACKS
ARE MAGNETIC.
ALTITUDES IN FEET MSL

DEPARTURES ENTERING
CONTROLLED AIRSPACE
WHEN PASSING 1000 GND.

CAUTION!
ALL DEPARTURE ROUTES.
DUE TO MOUNTAINOUS TERRAIN
EAST OF FIELD CLIMB WITH
6.6% (400ft/NM) OR MORE
UNTIL PASSING 3000

(*) German territory only

Do not use for real life navigation!



Report passing 2600' to Bayreuth Info and Contact München Radar Initial climb 5000'

SID	RWY	ROUTING	GPS/FMS RNAV	REMARKS
KULOK 2G	24	Climb on track 238° to SOSID, RT, via QD020 on track 034° to KULOK.	[A2000+] - SOSID[R] - QD020 - KULOK.	Not to be used during activity of NLFS. ALTN Route by ATC.
KULOK 3R	06	Climb on track 057° to QD061, LT, on track 327° to QD066, LT, on track 268° to KULOK. Climb with 6.6% (400 ft/min) or more until passing 3000	[A2000+] - QD061[L] - QD066[L] - KULOK.	

Revision: 2014-12-11 - Change: Note modified, note deleted