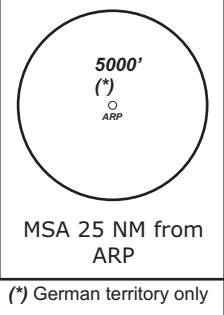


TRANS LEVEL: BY ATC TRANS ALT: 5000'	BAYREUTH Info 127.52	MÜNCHEN Radar 129.52	MÜNCHEN Radar 124.05
---	-------------------------	-------------------------	-------------------------

Apt Elev: 1601' Trans level: By ATC Trans alt: 5000'

ANELA 2G - ANELA TWO GOLF (20.5 NM)
ANELA 3R - ANELA THREE ROMEO (33.6 NM)

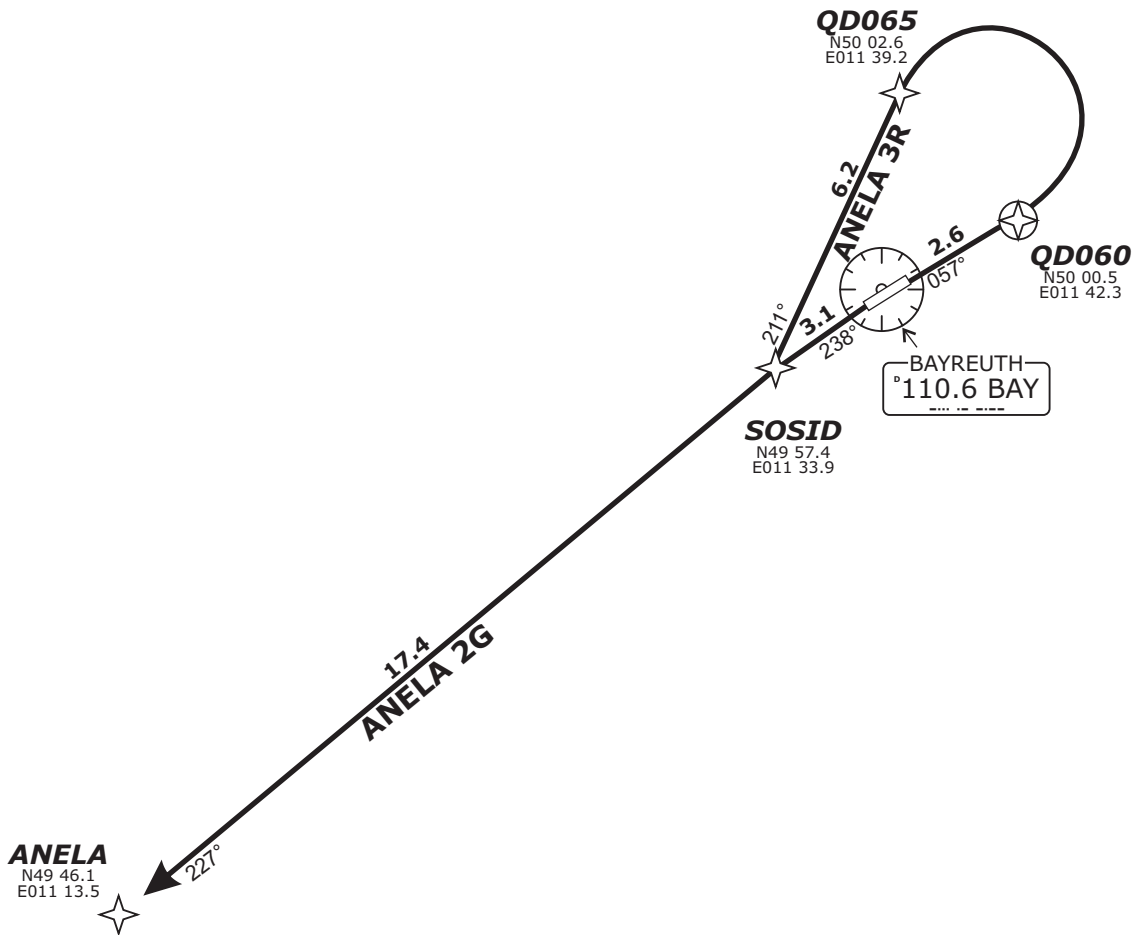


BEARINGS AND TRACKS
ARE MAGNETIC.
ALTITUDES IN FEET MSL

DEPARTURES ENTERING
CONTROLLED AIRSPACE
WHEN PASSING 1000 GND.

CAUTION!
ALL DEPARTURE ROUTES.
DUE TO MOUNTAINOUS TERRAIN
EAST OF FIELD CLIMB WITH
6.6% (400ft/NM) OR MORE
UNTIL PASSING 3000

Do not use for real life navigation!



Report passing 2600' to Bayreuth Info and Contact München Radar Initial climb 5000'

SID	RWY	ROUTING	GPS/FMS RNAV	REMARKS
ANELA 2G	24	Climb on track 238° to SOSID, LT, on track 227° to ANELA. Climb with 4.5% (273 ft/min) or more until passing 5000	[A2000+] - SOSID[L] - ANELA.	1. Not to be used during activity of NLFS. ALTN Route by ATC. 2. PDG due to airspace structure.
ANELA 3R	06	Climb on track 057° to QD060, LT, via QD065 on track 211° to SOSID, RT, on track 227 ° to ANELA Climb with 6.6% (400 ft/min) or more until passing 3000	QD060[A2000+, L] - QD065 - SOSID[R] - ANELA	

Revision: 2014-12-11 - Change: Note modified, note deleted