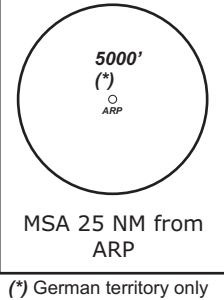


TRANS LEVEL: BY ATC TRANS ALT: 5000'	BAYREUTH Info 127.52	MÜNCHEN Radar 129.52	MÜNCHEN Radar 124.05
---	-------------------------	-------------------------	-------------------------

Apt Elev: 1601'      Trans level: By ATC      Trans alt: 5000'

**ABERU 3R - ABERU THREE ROMEO (27.7 NM)**  
**ABERU 2G - ABERU TWO GOLF (23.2 NM)**

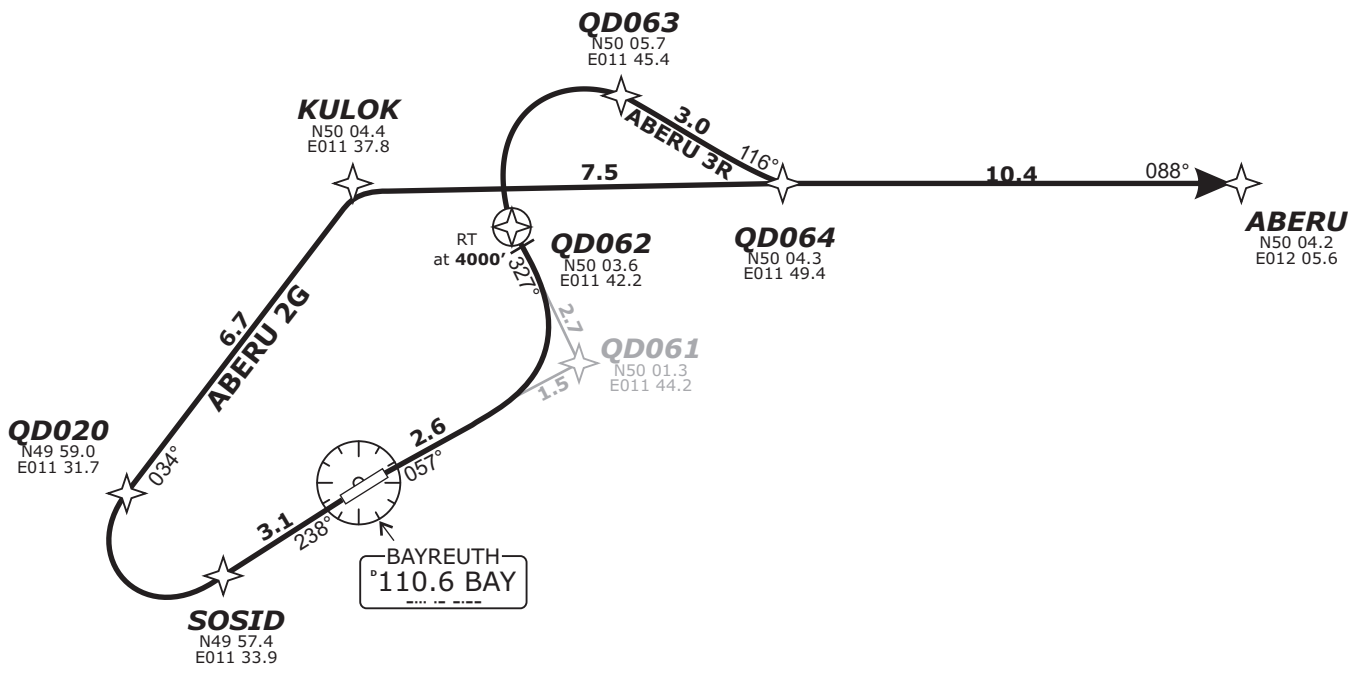


BEARINGS AND TRACKS  
ARE MAGNETIC.  
ALTITUDES IN FEET MSL

DEPARTURES ENTERING  
CONTROLLED AIRSPACE  
WHEN PASSING 1000 GND.

**CAUTION!**  
ALL DEPARTURE ROUTES.  
DUE TO MOUNTAINOUS TERRAIN  
EAST OF FIELD CLIMB WITH  
6.6% (400ft/NM) OR MORE  
UNTIL PASSING 3000

Do not use for real life navigation!



**Report passing 2600' to Bayreuth Info and Contact München Radar      Initial climb 5000'**

SID	RWY	ROUTING	GPS/FMS RNAV	REMARKS
<b>ABERU 2G</b>	<b>24</b>	Climb on track 238° to SOSID, RT, via QD020 on track 034° to KULOK, RT, on track 088° to ABERU	[A2000+] - SOSID[R] - QD020 - KULOK[R] - ABERU.	Not to be used during activity of NLFS. ALTN Route by ATC.
<b>ABERU 3R</b>	<b>06</b>	Climb on track 057° to QD061, LT, on track 327° to QD062 or 4000, whichever is later, RT, via QD063 on track 116° to QD064, LT, on track 088° to ABERU Climb with 6.6% (400 ft/min) or more until passing 3000	[A2000+] - QD061[L] - QD062 - [A4000+;R] - QD063 - QD064[L] - ABERU.	

Revision: 2014-12-11 - Change: Note modified, note deleted