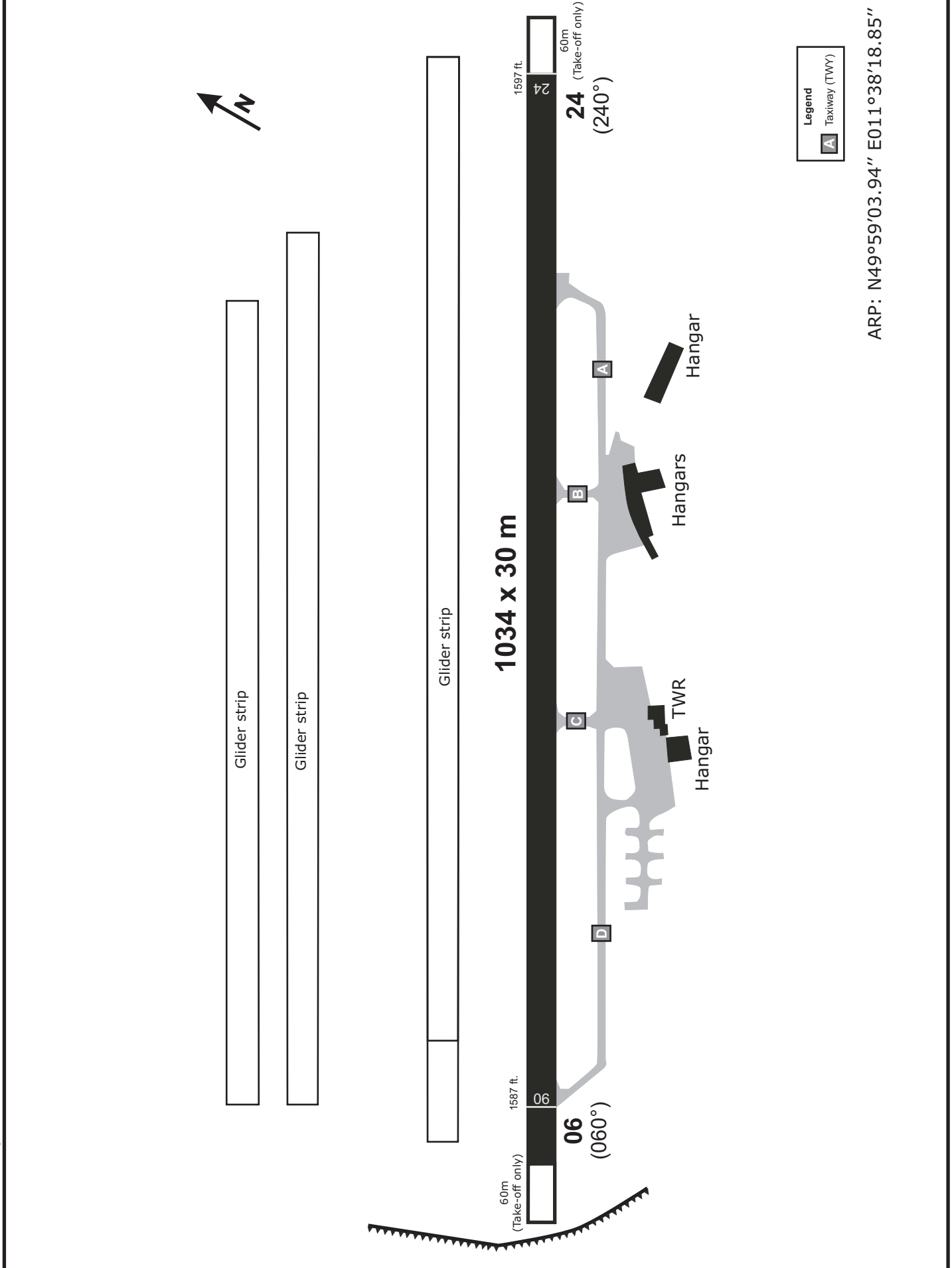


BAYREUTH Info 127.52	MÜNCHEN Radar 129.52	MÜNCHEN Radar 124.05
-------------------------	-------------------------	-------------------------

Apt Elev: 1601' Trans level: By ATC Trans alt: 5000'

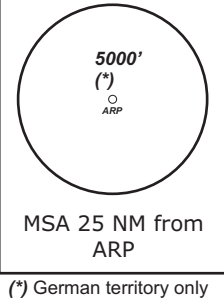
Do not use for real life navigation!



TRANS LEVEL: BY ATC TRANS ALT: 5000'	BAYREUTH Info 127.52	MÜNCHEN Radar 129.52	MÜNCHEN Radar 124.05
---	-------------------------	-------------------------	-------------------------

Apt Elev: 1601' Trans level: By ATC Trans alt: 5000'

ABERU 3R - ABERU THREE ROMEO (27.7 NM)
ABERU 2G - ABERU TWO GOLF (23.2 NM)

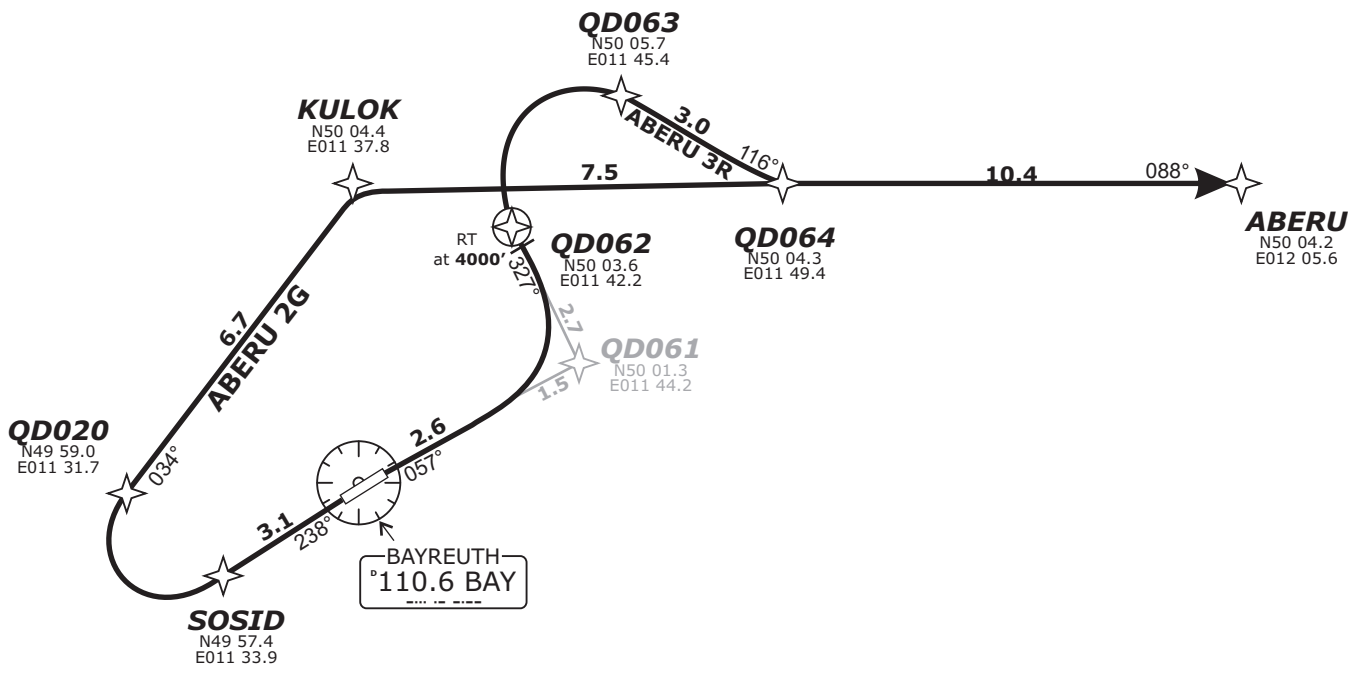


BEARINGS AND TRACKS
ARE MAGNETIC.
ALTITUDES IN FEET MSL

DEPARTURES ENTERING
CONTROLLED AIRSPACE
WHEN PASSING 1000 GND.

CAUTION!
ALL DEPARTURE ROUTES.
DUE TO MOUNTAINOUS TERRAIN
EAST OF FIELD CLIMB WITH
6.6% (400ft/NM) OR MORE
UNTIL PASSING 3000

Do not use for real life navigation!



Report passing 2600' to Bayreuth Info and Contact München Radar Initial climb 5000'

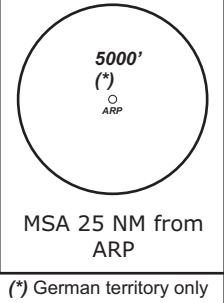
SID	RWY	ROUTING	GPS/FMS RNAV	REMARKS
ABERU 2G	24	Climb on track 238° to SOSID, RT, via QD020 on track 034° to KULOK, RT, on track 088° to ABERU	[A2000+] - SOSID[R] - QD020 - KULOK[R] - ABERU.	Not to be used during activity of NLFS. ALTN Route by ATC.
ABERU 3R	06	Climb on track 057° to QD061, LT, on track 327° to QD062 or 4000, whichever is later, RT, via QD063 on track 116° to QD064, LT, on track 088° to ABERU Climb with 6.6% (400 ft/min) or more until passing 3000	[A2000+] - QD061[L] - QD062 - [A4000+;R] - QD063 - QD064[L] - ABERU.	

Revision: 2014-12-11 - Change: Note modified, note deleted

TRANS LEVEL: BY ATC TRANS ALT: 5000'	BAYREUTH Info 127.52	MÜNCHEN Radar 129.52	MÜNCHEN Radar 124.05
---	-------------------------	-------------------------	-------------------------

Apt Elev: 1601' Trans level: By ATC Trans alt: 5000'

ANELA 2G - ANELA TWO GOLF (20.5 NM)
ANELA 3R - ANELA THREE ROMEO (33.6 NM)

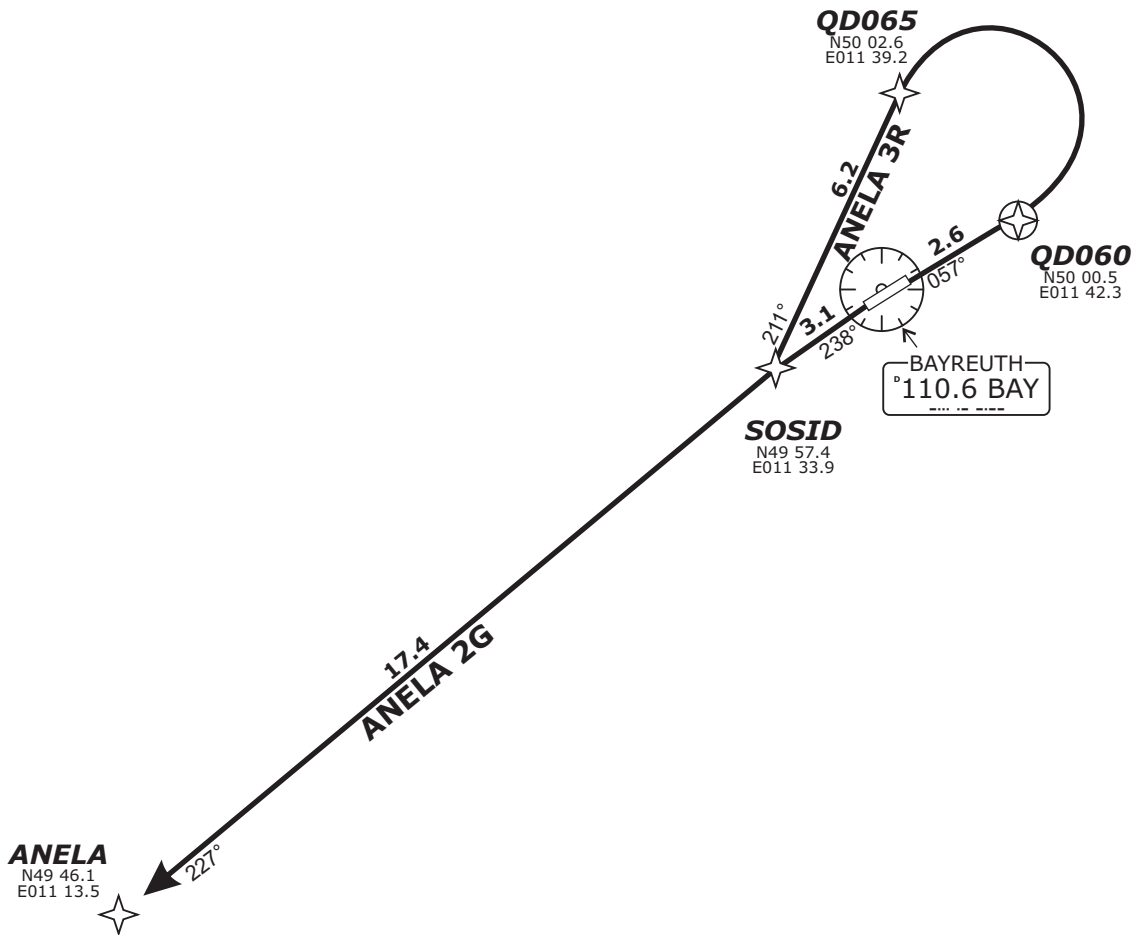


BEARINGS AND TRACKS
ARE MAGNETIC.
ALTITUDES IN FEET MSL

DEPARTURES ENTERING
CONTROLLED AIRSPACE
WHEN PASSING 1000 GND.

CAUTION!
ALL DEPARTURE ROUTES.
DUE TO MOUNTAINOUS TERRAIN
EAST OF FIELD CLIMB WITH
6.6% (400ft/NM) OR MORE
UNTIL PASSING 3000

Do not use for real life navigation!



Report passing 2600' to Bayreuth Info and Contact München Radar Initial climb 5000'

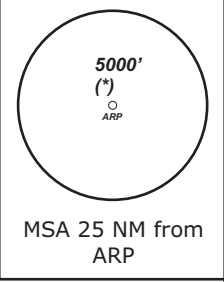
SID	RWY	ROUTING	GPS/FMS RNAV	REMARKS
ANELA 2G	24	Climb on track 238° to SOSID, LT, on track 227° to ANELA. Climb with 4.5% (273 ft/min) or more until passing 5000	[A2000+] - SOSID[L] - ANELA.	1. Not to be used during activity of NLFS. ALTN Route by ATC. 2. PDG due to airspace structure.
ANELA 3R	06	Climb on track 057° to QD060, LT, via QD065 on track 211° to SOSID, RT, on track 227° to ANELA Climb with 6.6% (400 ft/min) or more until passing 3000	QD060[A2000+, L] - QD065 - SOSID[R] - ANELA	

Revision: 2014-12-11 - Change: Note modified, note deleted

TRANS LEVEL: BY ATC TRANS ALT: 5000'	BAYREUTH Info 127.52	MÜNCHEN Radar 129.52	MÜNCHEN Radar 124.05
---	-------------------------	-------------------------	-------------------------

Apt Elev: 1601' Trans level: By ATC Trans alt: 5000'

KULOK 3R - KULOK THREE ROMEO (10.0 NM)
KULOK 2G - KULOK TWO GOLF (12.8 NM)



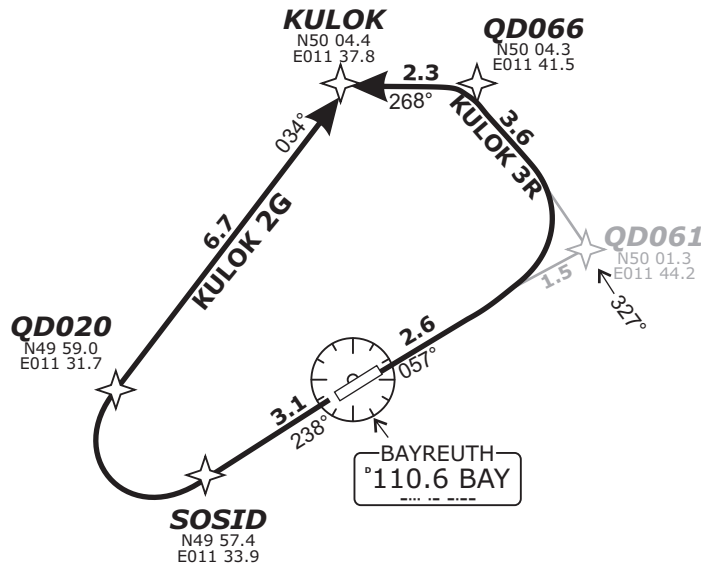
BEARINGS AND TRACKS
ARE MAGNETIC.
ALTITUDES IN FEET MSL

DEPARTURES ENTERING
CONTROLLED AIRSPACE
WHEN PASSING 1000 GND.

CAUTION!
ALL DEPARTURE ROUTES.
DUE TO MOUNTAINOUS TERRAIN
EAST OF FIELD CLIMB WITH
6.6% (400ft/NM) OR MORE
UNTIL PASSING 3000

(*) German territory only

Do not use for real life navigation!



Report passing 2600' to Bayreuth Info and Contact München Radar Initial climb 5000'

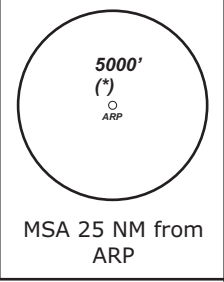
SID	RWY	ROUTING	GPS/FMS RNAV	REMARKS
KULOK 2G	24	Climb on track 238° to SOSID, RT, via QD020 on track 034° to KULOK.	[A2000+] - SOSID[R] - QD020 - KULOK.	Not to be used during activity of NLFS. ALTN Route by ATC.
KULOK 3R	06	Climb on track 057° to QD061, LT, on track 327° to QD066, LT, on track 268° to KULOK. Climb with 6.6% (400 ft/min) or more until passing 3000	[A2000+] - QD061[L] - QD066[L] - KULOK.	

Revision: 2014-12-11 - Change: Note modified, note deleted

TRANS LEVEL: BY ATC TRANS ALT: 5000'	BAYREUTH Info 127.52	MÜNCHEN Radar 129.52	MÜNCHEN Radar 124.05
---	-------------------------	-------------------------	-------------------------

Apt Elev: 1601' Trans level: By ATC Trans alt: 5000'

LONLI 3R - LONLI THREE ROMEO (20.5 NM)
LONLI 2G - LONLI TWO GOLF (25.6 NM)



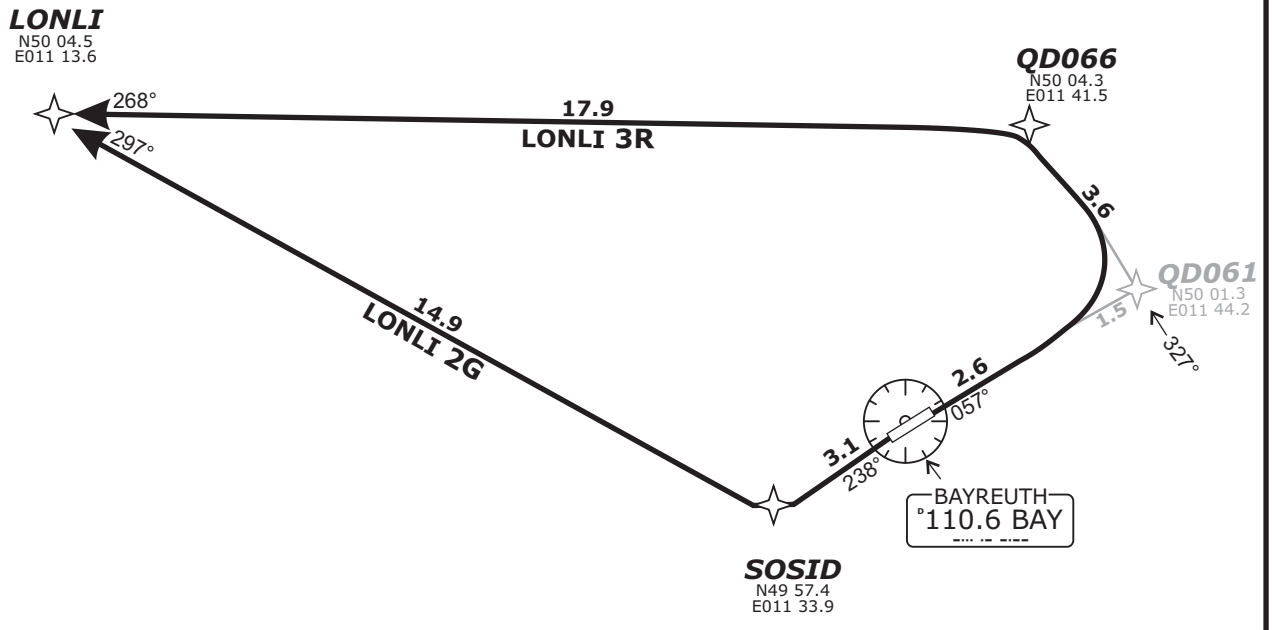
(*) German territory only

BEARINGS AND TRACKS
ARE MAGNETIC.
ALTITUDES IN FEET MSL

CAUTION!
ALL DEPARTURE ROUTES.
DUE TO MOUNTAINOUS TERRAIN
EAST OF FIELD CLIMB WITH
6.6% (400ft/NM) OR MORE
UNTIL PASSING 3000

DEPARTURES ENTERING
CONTROLLED AIRSPACE
WHEN PASSING 1000 GND.

Do not use for real life navigation!



Report passing 2600' to Bayreuth Info and Contact München Radar Initial climb 5000'

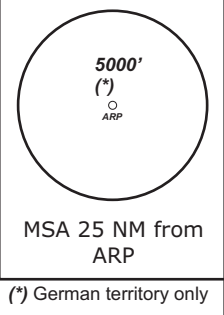
SID	RWY	ROUTING	GPS/FMS RNAV	REMARKS
LONLI 2G	24	Climb on track 238° to SOSID, RT, on track 296° to LONLI. Climb with 4.5% (273 ft/min) or more until passing 5000	[A2000+] - SOSID[R] - LONLI.	1. Not to be used during activity of NLFS. ALTN Route by ATC. 2. PDG due to airspace structure.
LONLI 3R	06	Climb on track 057° to QD061, LT, on track 327° to QD066, LT, on track 268° to LONLI. Climb with 6.6% (400 ft/min) or more until passing 3000	[A2000+] - QD061[L] - QD066[L] - LONLI	

Revision: 2014-12-11 - Change: Note modified, note deleted

TRANS LEVEL: BY ATC TRANS ALT: 5000'	BAYREUTH Info 127.52	MÜNCHEN Radar 129.52	MÜNCHEN Radar 124.05
---	-------------------------	-------------------------	-------------------------

Apt Elev: 1601' Trans level: By ATC Trans alt: 5000'

PIVIR 1G - PIVIR ONE GOLF (20.5 NM)
PIVIR 2R - PIVIR TWO ROMEO (33.6 NM)

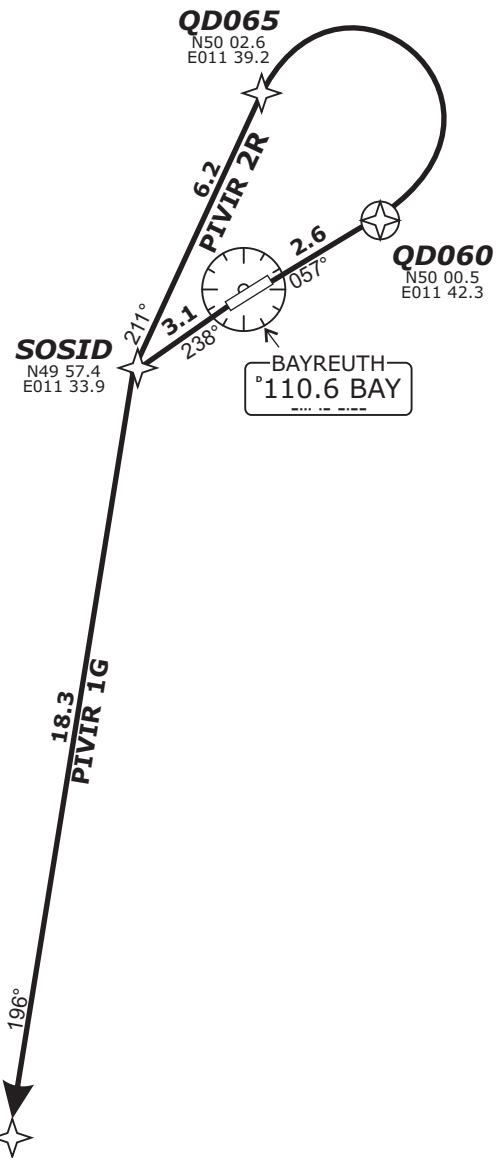


BEARINGS AND TRACKS
ARE MAGNETIC.
ALTITUDES IN FEET MSL

DEPARTURES ENTERING
CONTROLLED AIRSPACE
WHEN PASSING 1000 GND.

CAUTION!
ALL DEPARTURE ROUTES.
DUE TO MOUNTAINOUS TERRAIN
EAST OF FIELD CLIMB WITH
6.6% (400ft/NM) OR MORE
UNTIL PASSING 3000

Do not use for real life navigation!



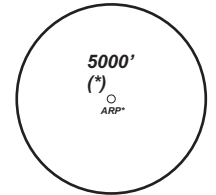
Report passing 2600' to Bayreuth Info and Contact München Radar Initial climb 5000'

SID	RWY	ROUTING	GPS/FMS RNAV	REMARKS
PIVIR 1G	24	Climb on track 238° to SOSID, LT, on track 196° to PIVIR. Climb with 4.5% (273 ft/min) or more until passing 3000	[A2000+] - SOSID[L] - PIVIR.	1. Only for flights DEST EDDN. 2. Not to be used during activity of NLFS. ALTN Route by ATC. 3. PDG due to airspace structure.
PIVIR 2R	06	Climb on track 057° to QD060, LT, via QD065 on track 211° to SOSID, LT, on track 196 ° to PIVIR. Climb with 6.6% (400 ft/min) or more until passing 3000	QD060[A2000+, L] - QD065 - SOSID[R] - PIVIR	Only for flights DEST EDDN.

Revision: 2014-12-11 - Change: Note modified, note deleted

TRANS LEVEL: BY ATC TRANS ALT: 5000'	BAYREUTH Info 127.52	MÜNCHEN Radar 129.52
---	-------------------------	-------------------------

ANELA 5Z - ANELA FIVE ZULU [ANEL5Z]
KULOK 5Z - KULOK FIVE ZULU [KULO5Z]
LONLI 5Z - LONLI FIVE ZULU [LONL5Z]



LONLI
N50 04.5
E011 13.6

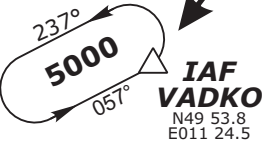
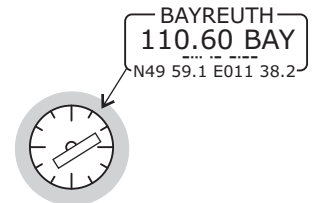
LONLI 5Z
12.8
5000
6000*

KULOK
N50 04.4
E011 37.8

KULOK 5Z
13.6
5000
6000*

PARTS OF IFR PROFILES WITHIN
AIRSPACE CLASS E.
WATCH OUT FOR VFR TRAFFIC
UNKNOWN TO ATC.

***OPERATIONAL ALTITUDES
ARE DUE TO NLFS.**



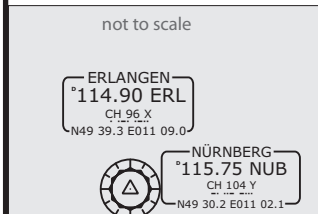
HOLDING
MAX IAS 170 KTS.

ANELA 5Z
10.5
4800
6000*

ANELA
N49 46.1
E011 13.5

Do not use for real life navigation!

Revision: 2014-10-16 - Change: New procedure

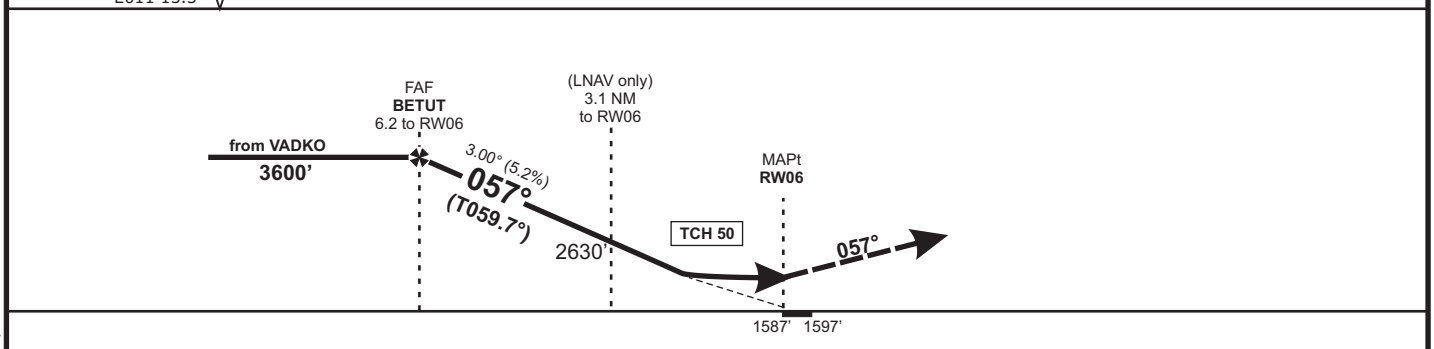
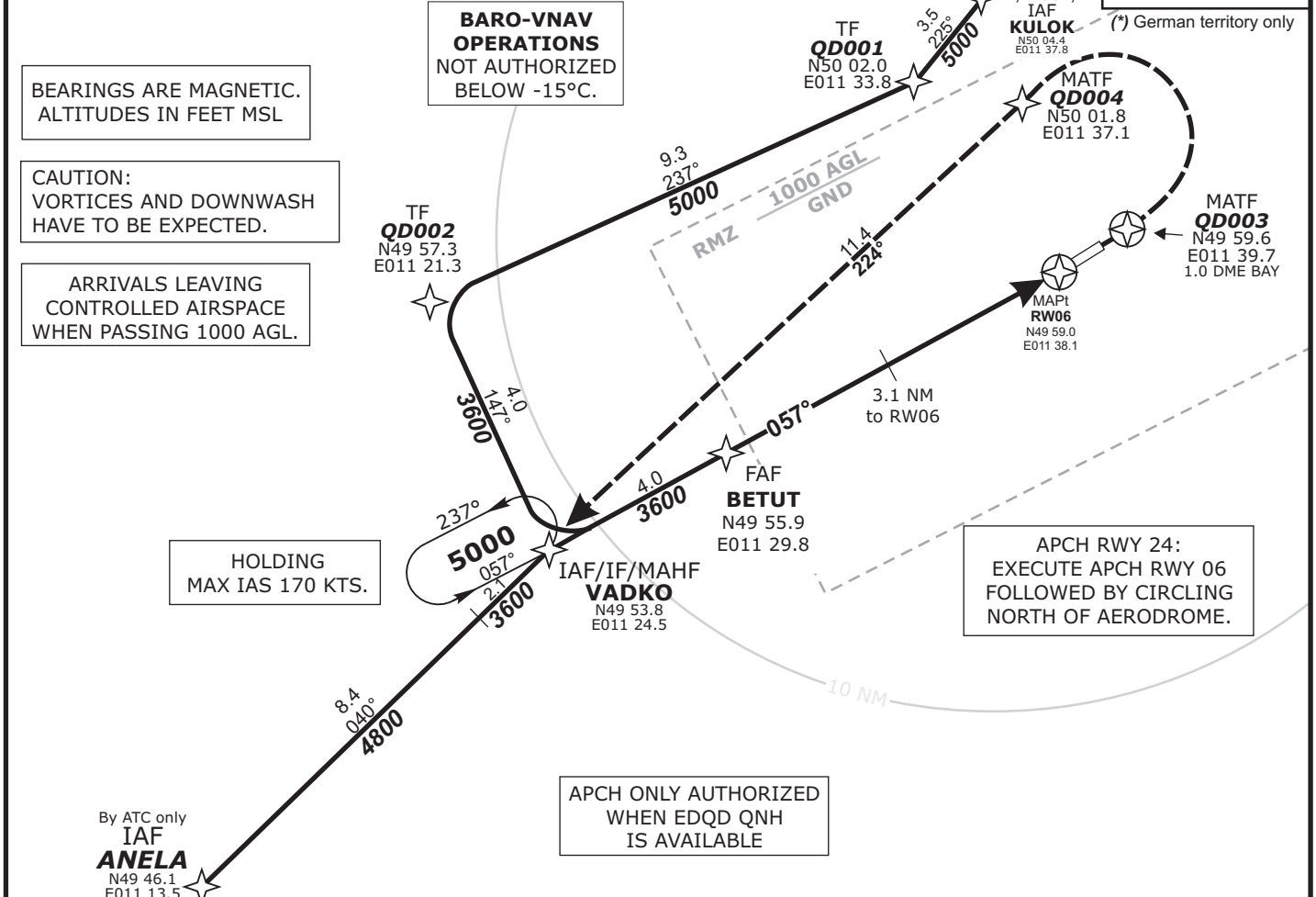


BAYREUTH Info 127.52		MÜNCHEN Radar 129.52		MÜNCHEN Radar 124.05	
-------------------------	--	-------------------------	--	-------------------------	--

BAY VOR 110.6	Final Apch Course 057°	FAF BETUT 3600'	LNAV/VNAV DA(H) 1890' (300')	Apt.Elev. 1601' Rwy06 Elev. 1587' Rwy24 Elev. 1597'	<p>5000' (*) ARP</p>
-------------------------	-------------------------------------	------------------------------	---	---	------------------------------

MISSED APCH:
RNAV (GPS): On track 057° to QD003, LT, via QD004 on tack 224° to VADKO climbing 5000.
QD003[L] - QD004 - VADKO[A5000].

Alt Set: hPa (IN on req) Rwy Elev: 57 hPa Trans level: By ATC Trans alt: 5000'



OCA (OCH)	A	B			DIST THR / RW06	6	5	4	3	2		
LNAV	2000 (420)	2000 (420)			ALTITUDE	3550	3230	2920	2600	2280		
LNAV/VNAV	1890 (300)	1890 (300)										
CIRCLING*	2150 (550)	2470 (870)			GS	kts	80	100	120	140		
					BETUT - RW06 (6.2 NM)	MIN:SEC	4:38	3:42	3:05	2:39		
*North of aerodrome only					Rate of descent (5.2%)	ft/MIN	420	530	640	740		

Do not use for real life navigation!

Revision: 2014-12-11 - Change: Airspace F replaced by RMZ, note mod., note deleted