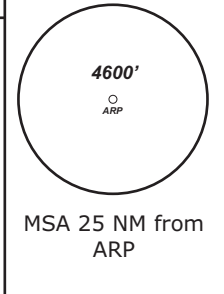


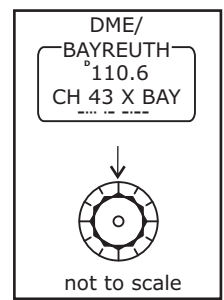
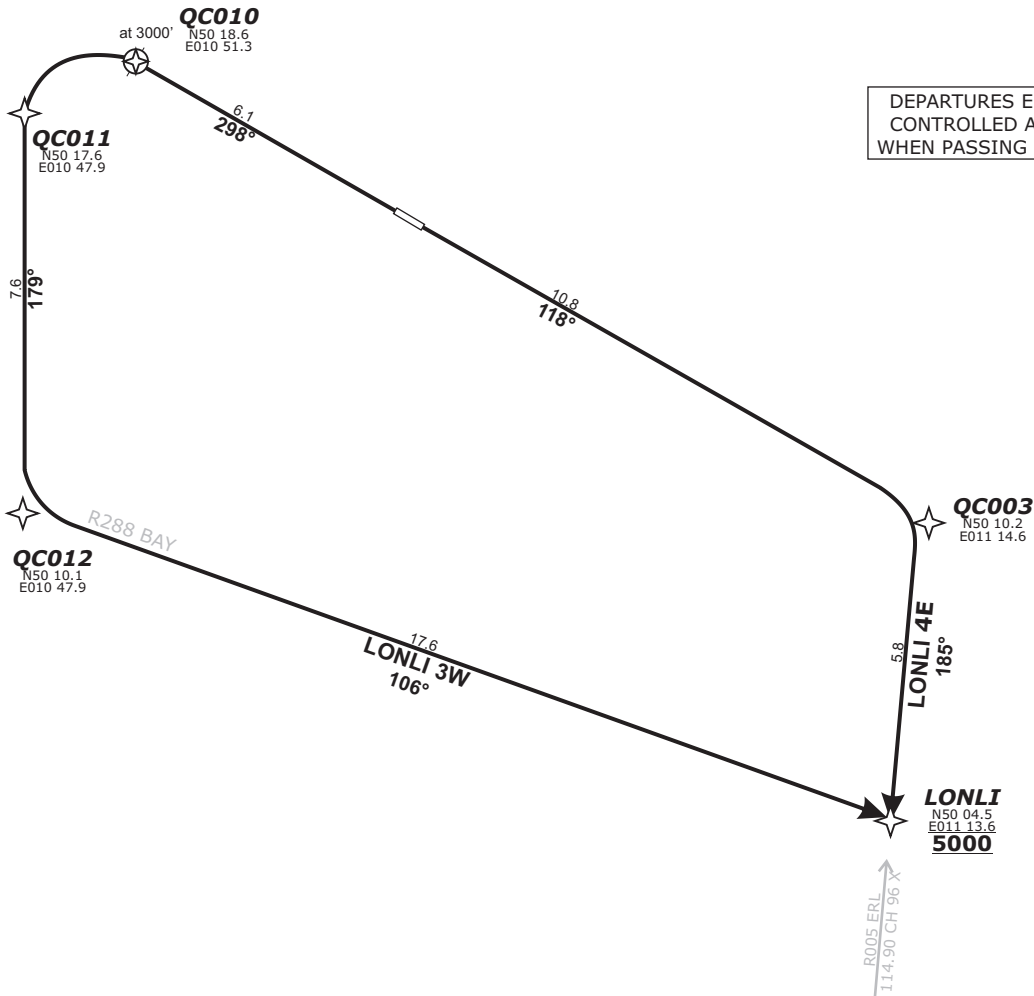
COBURG ATIS 120.10	COBURG Info 128.67	MÜNCHEN Radar 129.52	MÜNCHEN Radar 124.05
-----------------------	-----------------------	-------------------------	-------------------------

TRANS LEVEL: BY ATC      TRANS ALT: 5000'      APT Elevation: 1491'



**LONLI 4E - LONLI FOUR ECHO (16.6 NM)**  
**LONLI 3W - LONLI FOUR WHISKEY (31.3 NM)**

DEPARTURES ENTERING  
CONTROLLED AIRSPACE  
WHEN PASSING 1000 AGL.



BEARINGS AND TRACKS ARE MAGNETIC.  
ALTITUDES IN FEET MSL

Do not use for real life navigation!

**Contact München Radar immediately after take-off!**      **Initial climb 5000'**

SID	RWY	ROUTING	GPS/FMS RNAV	REMARKS
<b>LONLI 4E</b>	<b>12</b>	On track 118° to QC003, RT, on track 185° to LONLI, cross LONLI at 5000.	[A2000+] - QC003[R] - LONLI[A5000]	Procedure not to be used during activity of NLFS.
<b>LONLI 3W</b>	<b>30</b>	On track 298° to QC010 and 3000, LT, via QC011 on track 179° to QC012, LT, on track 106° to LONLI.	[A2000+] - QC010[A3000;L]- QC011 - QC012[L]-LONLI	

Revision: 2014-12-11 - Change: Note modified