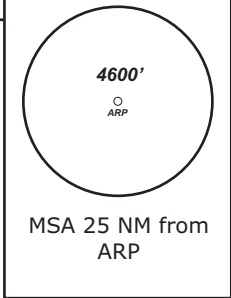


COBURG ATIS 120.10	COBURG Info 128.67	MÜNCHEN Radar 129.52	MÜNCHEN Radar 124.05
-----------------------	-----------------------	-------------------------	-------------------------

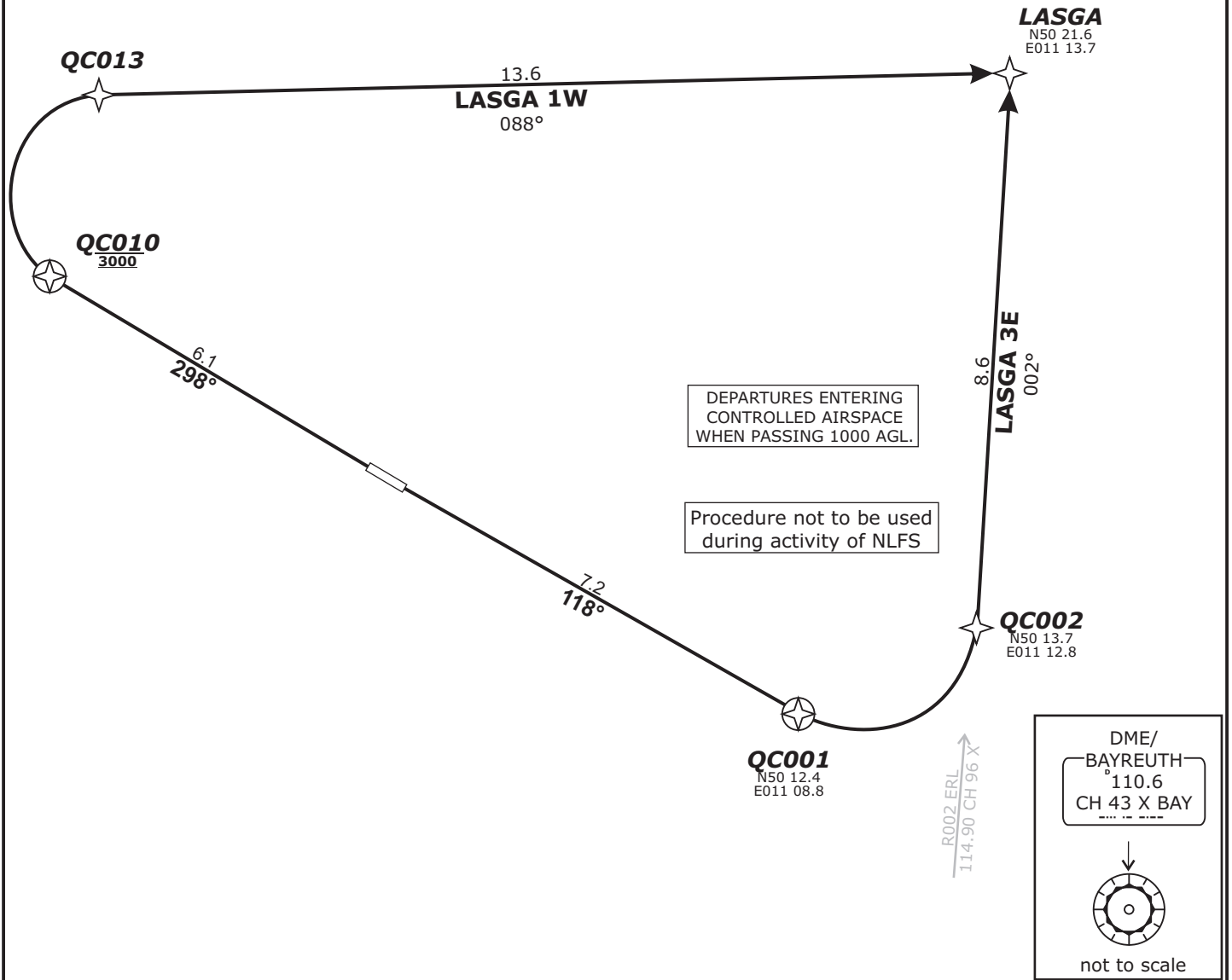
TRANS LEVEL: BY ATC      TRANS ALT: 5000'      APT Elevation: 1491'

**LASGA 1W - LASGA ONE WISKEY** (19.7 NM)  
**LASGA 3E - LASGA THREE ECHO** (15.8 NM)

BEARINGS AND TRACKS ARE MAGNETIC.  
 ALTITUDES IN FEET MSL



Do not use for real life navigation!



**Contact München Radar immediately after take-off!**

**Initial climb 5000'**

SID	RWY	ROUTING	GPS/FMS RNAV	REMARKS
<b>LASGA 3E</b>	<b>12</b>	On RWY track to 23 DME BAY; LT to intercept R002 ERL, on R002 ERL to LASGA	[A2000+] - QC001[L]- QC002 - LASGA.	Procedure not to be used during activity of NLFS
<b>LASGA 1W</b>	<b>30</b>	On track 298° to QC010 and 3000, RT, via QC013 on track 088° to LASGA	[A2000+] - QC010[A3000; R] - QC013 - LASGA	