

TRANS LEVEL: BY ATC TRANS ALT: 5000'	COBURG Info 128.67	MÜNCHEN Radar 129.52	MÜNCHEN Radar 124.05
VOR/DME BAY 110.6	Final Apch Course 298°	FAF KOPUG 4000'	MDA(H) 1890' (440')
Apt.Elev. 1491'			<p>MSA 25 NM from ARP</p>

MISSED APCH:
RNAV (GPS): Climb on track 298° to QC023 or 3000', whichever is later, LT, via QC024 on tack 178° to QC025; LT, on track 106° to LONLI climbing to 5000.
QC023[A3000+;L] - QC024 - QC025[L] - LONLI[A5000].

BEARINGS AND TRACKS ARE MAGNETIC.
ALITUDES IN FEET MSL

APCH AUTHORIZED ONLY
IF EDQC QNH IS AVAILABLE

PROCEDURE NOT TO BE USED
DURING ACTIVITY OF NLS

**BARO-VNAV
OPERATIONS
NOT AUTHORIZED
BELOW -15°C.**

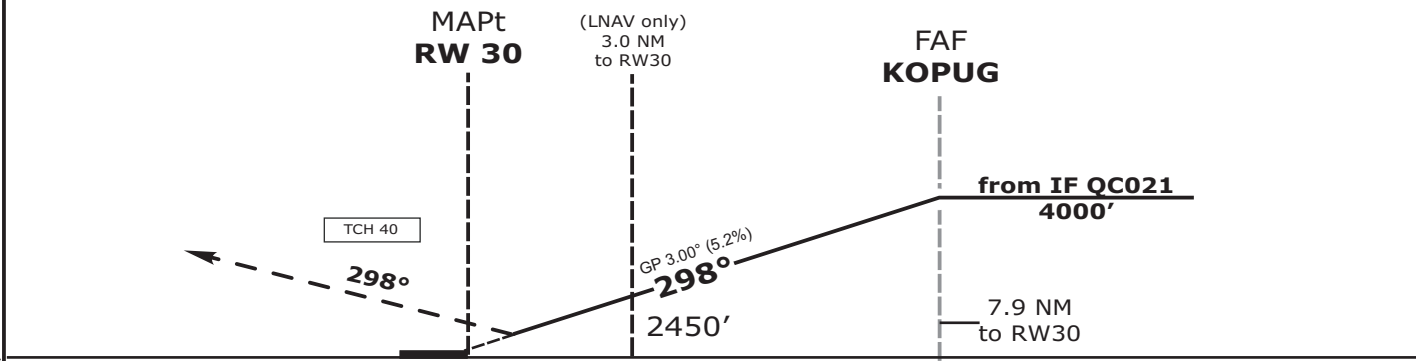
APCH RWY 12:
EXECUTE APCH RWY 30
FOLLOWED BY CIRCLING
NORTH OF AERODROME.
MNM required ceiling 1000 ft

ARRIVALS LEAVING
CONTROLLED AIRSPACE
WHEN PASSING 1000 AGL.

MDA/DA not below 200 ft.

Waypointlist:

LONLI (IAF) N 50 04 29.06 E 011 13 34.99
LASGA (IAF) N 50 21 38.11 E 011 13 41.07
QC020 (TF) N 50 13 37.44 E 011 21 52.42
QC021 (IF) N 50 09 03.32 E 011 17 43.30
KOPUG (FAF) N 50 11 43.16 E 011 10 35.48
RW30 (MAPt) N 50 15 39.65 E 010 59 58.81
QC023 (MATF) N 50 18 21.44 E 010 52 40.66
QC024 (MATF) N 50 17 08.67 E 010 49 23.22
QC025 (MATF) N 50 09 39.80 E 010 49 22.57
LONLI (MAHF) N 50 04 29.06 E 011 13 34.99



OCA (OCH)	A	B		DIST THR / RW30	2	3	4	5	6	7
LNAV	1850 (400)	1850 (400)		ALTITUDE	2130	2450	2770	3090	3410	3730
LNAV / VNAV	1760 (300)	1760 (300)								
CIRCLING*	1940 (450)	1990 (500)		GS	kts 80 100 120 140					
				KOPUG - RW30 (7.9 NM)	MIN:SEC 5:56 4:40 3:57 3:23					
*North of aerodrome only				Rate of descent (5.2%)	ft/MIN 420 530 640 740					

Do not use for real life navigation!

Revision: 2014-12-11 - Change: Airspace F replaced by RMZ, note mod., note deleted