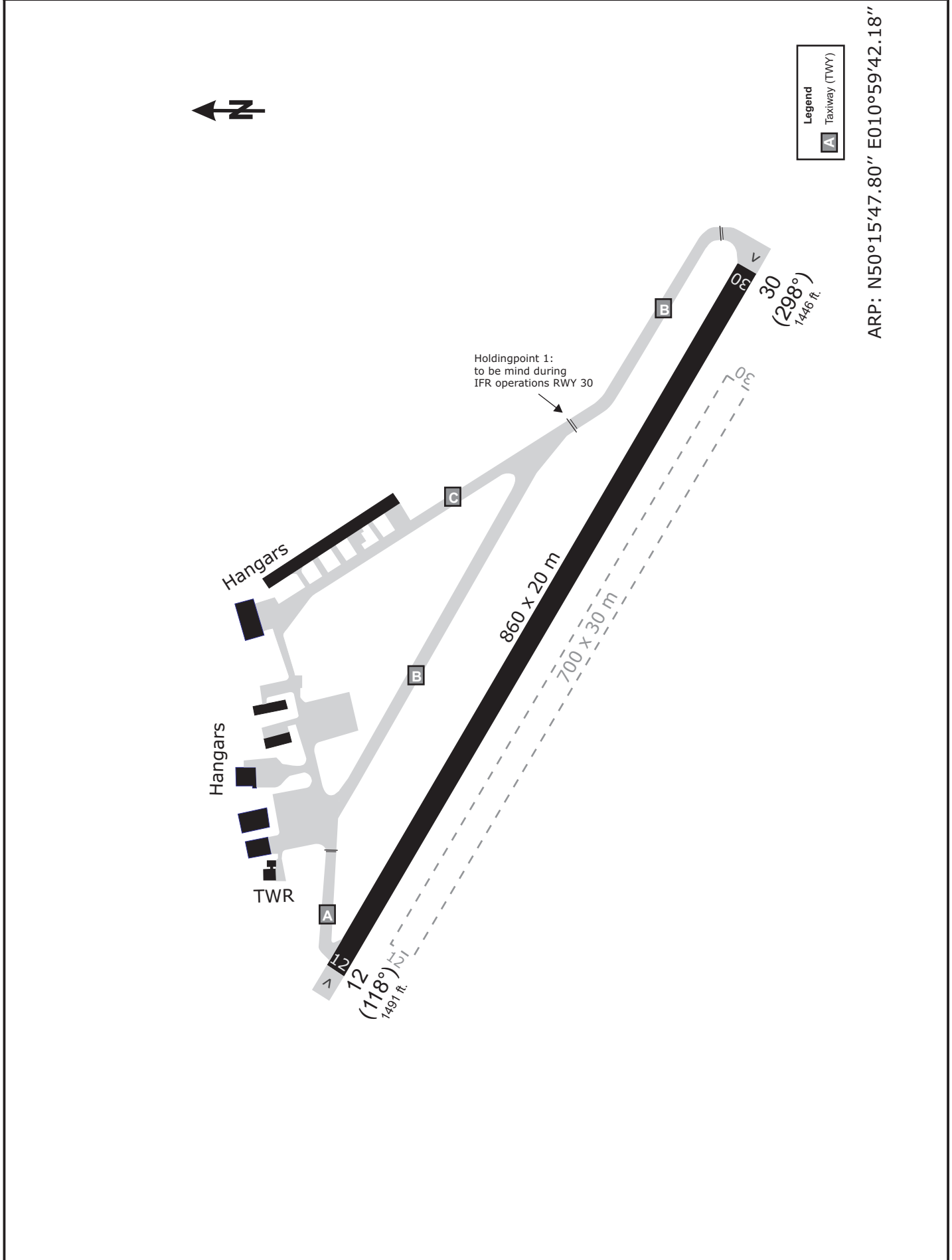


COBURG ATIS 120.10	COBURG Info 128.67	MÜNCHEN Radar 129.52	MÜNCHEN Radar 124.05
-----------------------	-----------------------	-------------------------	-------------------------

TRANS LEVEL: BY ATC TRANS ALT: 5000' APT Elevation: 1491'



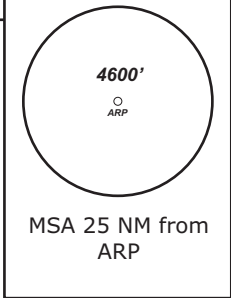
Do not use for real life navigation!

COBURG ATIS 120.10	COBURG Info 128.67	MÜNCHEN Radar 129.52	MÜNCHEN Radar 124.05
-----------------------	-----------------------	-------------------------	-------------------------

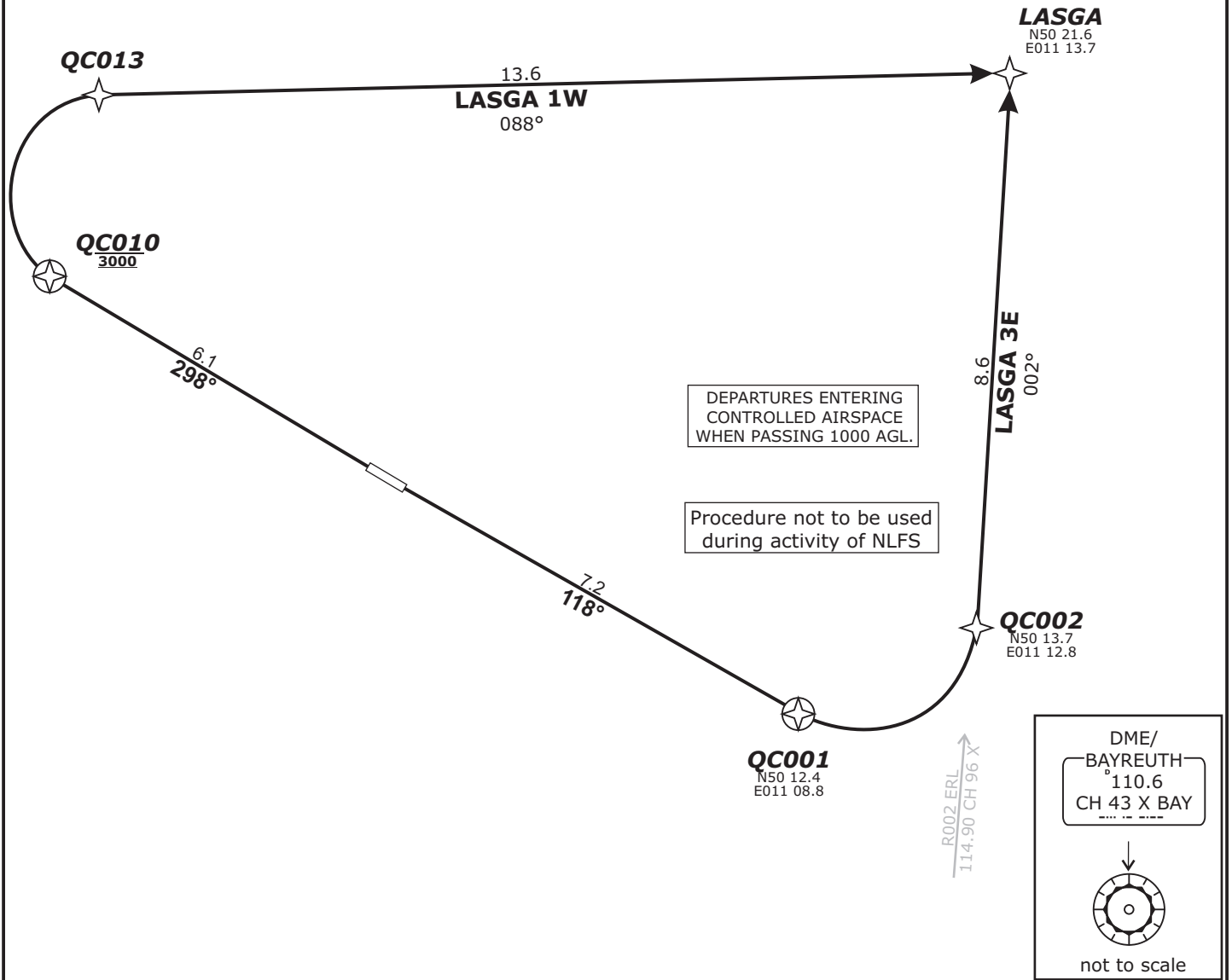
TRANS LEVEL: BY ATC TRANS ALT: 5000' APT Elevation: 1491'

LASGA 1W - LASGA ONE WISKEY (19.7 NM)
LASGA 3E - LASGA THREE ECHO (15.8 NM)

BEARINGS AND TRACKS ARE MAGNETIC.
ALTITUDES IN FEET MSL



Do not use for real life navigation!



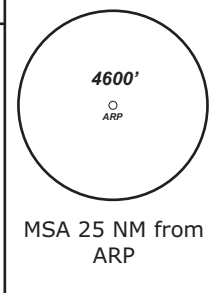
Contact München Radar immediately after take-off!

Initial climb 5000'

SID	RWY	ROUTING	GPS/FMS RNAV	REMARKS
LASGA 3E	12	On RWY track to 23 DME BAY; LT to intercept R002 ERL, on R002 ERL to LASGA	[A2000+] - QC001[L]- QC002 - LASGA.	Procedure not to be used during activity of NLFS
LASGA 1W	30	On track 298° to QC010 and 3000, RT, via QC013 on track 088° to LASGA	[A2000+] - QC010[A3000; R] - QC013 - LASGA	

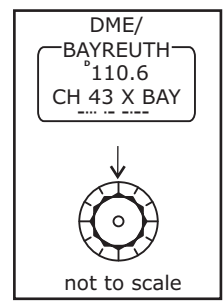
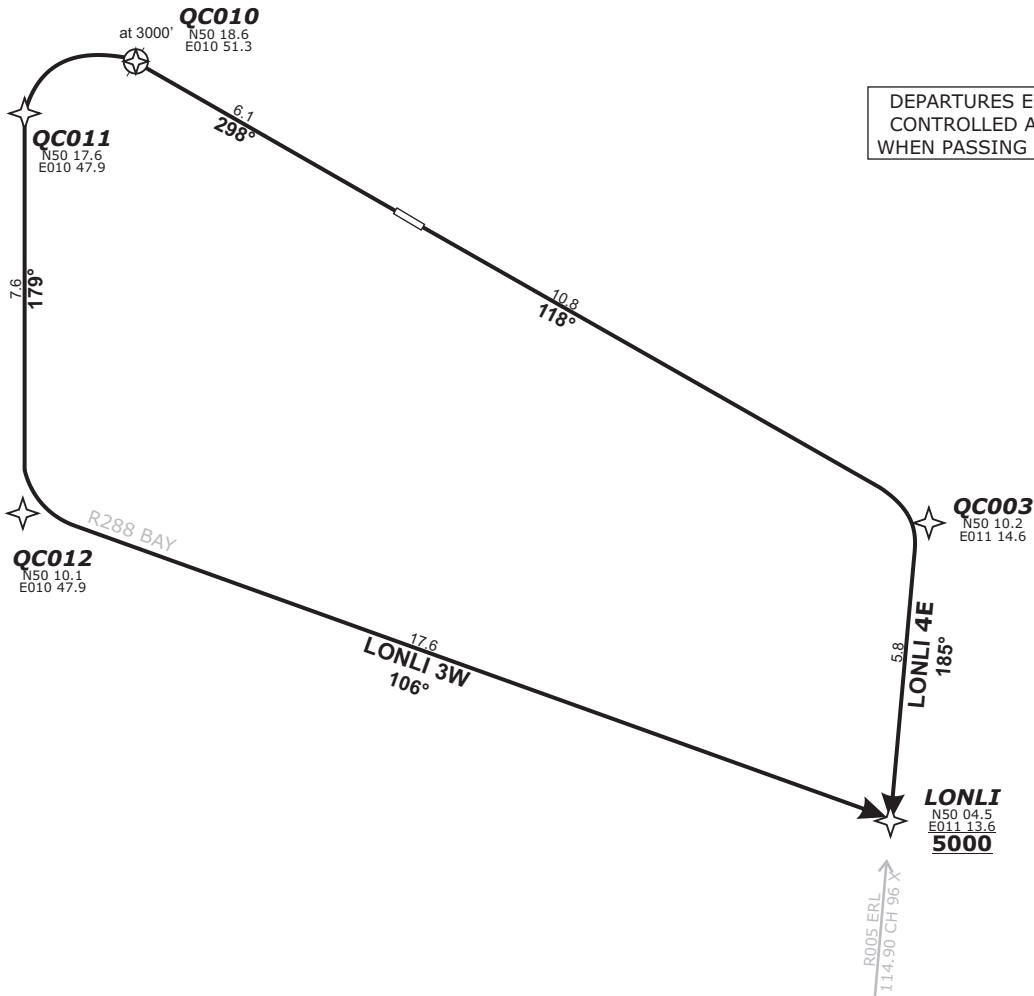
COBURG ATIS 120.10	COBURG Info 128.67	MÜNCHEN Radar 129.52	MÜNCHEN Radar 124.05
-----------------------	-----------------------	-------------------------	-------------------------

TRANS LEVEL: BY ATC TRANS ALT: 5000' APT Elevation: 1491'



LONLI 4E - LONLI FOUR ECHO (16.6 NM)
LONLI 3W - LONLI FOUR WHISKEY (31.3 NM)

DEPARTURES ENTERING
CONTROLLED AIRSPACE
WHEN PASSING 1000 AGL.



BEARINGS AND TRACKS ARE MAGNETIC.
ALTITUDES IN FEET MSL

Do not use for real life navigation!

Contact München Radar immediately after take-off! **Initial climb 5000'**

SID	RWY	ROUTING	GPS/FMS RNAV	REMARKS
LONLI 4E	12	On track 118° to QC003, RT, on track 185° to LONLI, cross LONLI at 5000.	[A2000+] - QC003[R] - LONLI[A5000]	Procedure not to be used during activity of NLFS.
LONLI 3W	30	On track 298° to QC010 and 3000, LT, via QC011 on track 179° to QC012, LT, on track 106° to LONLI.	[A2000+] - QC010[A3000;L]- QC011 - QC012[L]-LONLI	

Revision: 2014-12-11 - Change: Note modified

TRANS LEVEL: BY ATC TRANS ALT: 5000'	COBURG Info 128.67	MÜNCHEN Radar 129.52	MÜNCHEN Radar 124.05
VOR/DME BAY 110.6	Final Apch Course 298°	FAF KOPUG 4000'	MDA(H) 1890' (440')
Apt.Elev. 1491'			<p>MSA 25 NM from ARP</p>

MISSED APCH:
RNAV (GPS): Climb on track 298° to QC023 or 3000', whichever is later, LT, via QC024 on tack 178° to QC025; LT, on track 106° to LONLI climbing to 5000.
QC023[A3000+;L] - QC024 - QC025[L] - LONLI[A5000].

BEARINGS AND TRACKS ARE MAGNETIC.
ALITUDES IN FEET MSL

APCH AUTHORIZED ONLY
IF EDQC QNH IS AVAILABLE

PROCEDURE NOT TO BE USED
DURING ACTIVITY OF NLS

**BARO-VNAV
OPERATIONS
NOT AUTHORIZED
BELOW -15°C.**

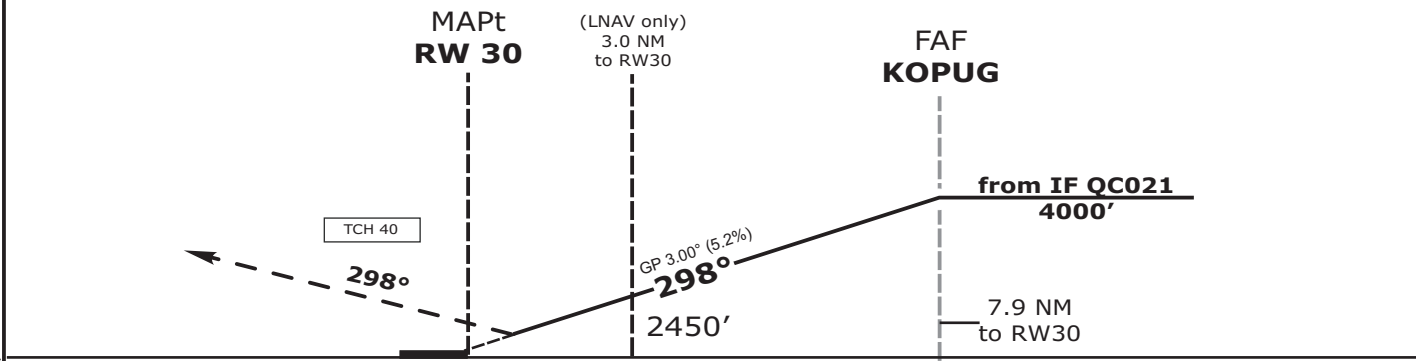
APCH RWY 12:
EXECUTE APCH RWY 30
FOLLOWED BY CIRCLING
NORTH OF AERODROME.
MNM required ceiling 1000 ft

ARRIVALS LEAVING
CONTROLLED AIRSPACE
WHEN PASSING 1000 AGL.

MDA/DA not below 200 ft.

Waypointlist:

LONLI (IAF) N 50 04 29.06 E 011 13 34.99
LASGA (IAF) N 50 21 38.11 E 011 13 41.07
QC020 (TF) N 50 13 37.44 E 011 21 52.42
QC021 (IF) N 50 09 03.32 E 011 17 43.30
KOPUG (FAF) N 50 11 43.16 E 011 10 35.48
RW30 (MAPt) N 50 15 39.65 E 010 59 58.81
QC023 (MATF) N 50 18 21.44 E 010 52 40.66
QC024 (MATF) N 50 17 08.67 E 010 49 23.22
QC025 (MATF) N 50 09 39.80 E 010 49 22.57
LONLI (MAHF) N 50 04 29.06 E 011 13 34.99



OCA (OCH)	A	B		DIST THR / RW30	2	3	4	5	6	7	
LNAV	1850 (400)	1850 (400)		ALTITUDE	2130	2450	2770	3090	3410	3730	
LNAV / VNAV	1760 (300)	1760 (300)									
CIRCLING*	1940 (450)	1990 (500)		GS	80				100	120	140
				KOPUG - RW30 (7.9 NM)	MIN:SEC	5:56	4:40	3:57	3:23		
*North of aerodrome only				Rate of descent (5.2%)	ft/MIN	420	530	640	740		

Do not use for real life navigation!

Revision: 2014-12-11 - Change: Airspace F replaced by RMZ, note mod., note deleted